



Date: 04/19/12

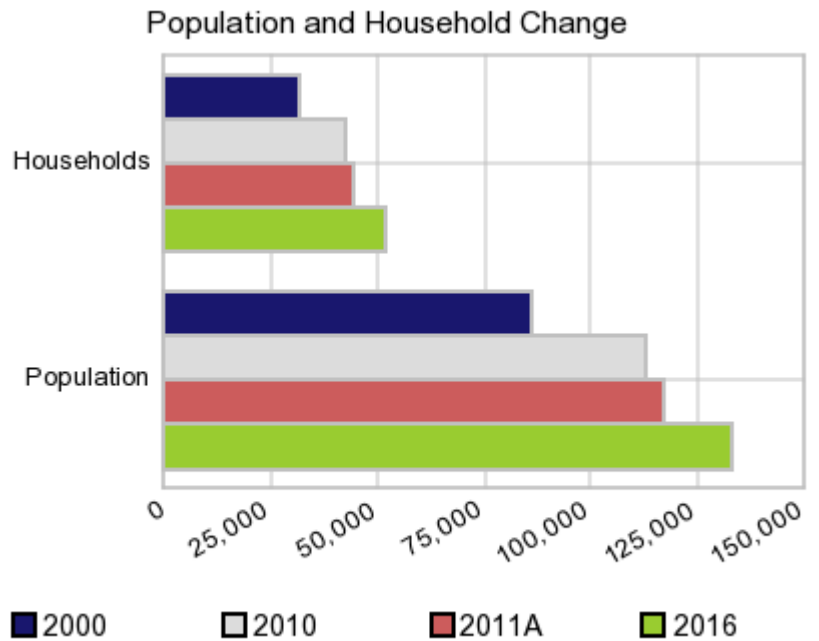
Current Geography Selection: (1 Selected) Counties: Faulkner County

Executive Summary Report with Charts

Population Demographics:

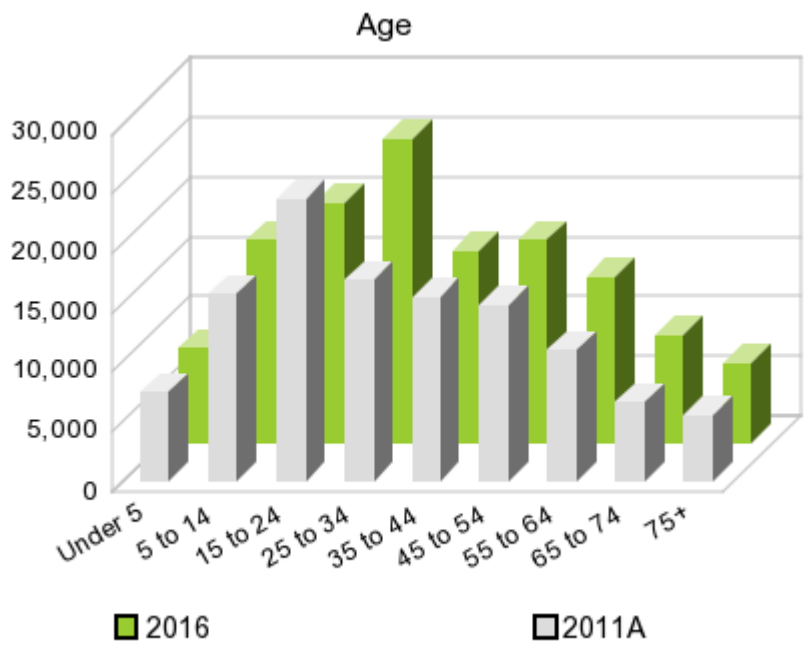
The number of households in the study area in 2000 was **31,882** and changed to **42,614** in 2010, representing a change of **33.7%**. The household count in 2011A was **44,543** and the household projection for 2016 is **52,101**, a change of **17.0%**.

The population in the study area in 2000 was **86,014** and in 2010 it was **113,237**, roughly a **31.7%** change. The population in 2011A was **117,222** and the projection for 2016 is **133,105** representing a change of **13.6%**.



	2000 Census	2010 Census	2011A Estimate	2016 Projection	Percent Change	
					2000 to 2010	2011 to 2016
Total Population	86,014	113,237	117,222	133,105	31.7%	13.6%
Total Households	31,882	42,614	44,543	52,101	99.8%	17.0%

Population by Age



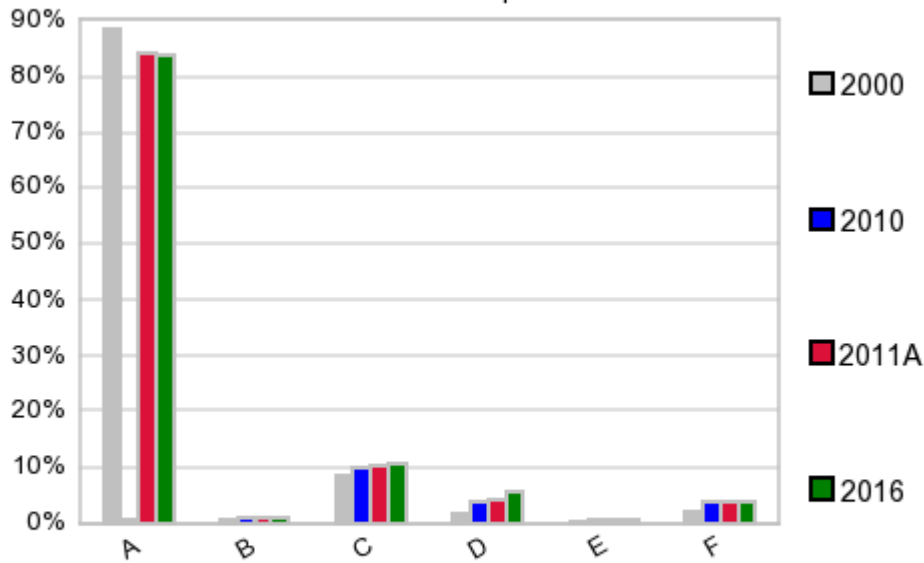
In 1990, the median age of the total population in the study area was **30**, and in 2000, it was **31**. The median age in 2011A is **31** and it is predicted to change in five years to **33** years. In 2011A, females represented **51.2%** of the population with a median age of **32** and males represented **48.8%** of the population with a median age of **31** years. In 2011A, the most prominent age group in this geography is **Age 25 to 34** years. The age group least represented in this geography is **75 +** years.

Age Groups*

	1990 Census		2000 Census		2011A Estimate		2016 Projection		Percent Change	
		%		%		%		%	1990 to 2000	2011 to 2016
0 to 4	4,196	7.0%	5,908	6.9%	7,515	6.4%	7,893	5.9%	40.8%	5.0%
5 to 14	8,598	14.3%	12,404	14.4%	15,741	13.4%	17,024	12.8%	44.3%	8.2%
15 to 19	5,931	9.9%	7,858	9.1%	10,370	8.9%	8,666	6.5%	32.5%	-16.4%
20 to 24	6,488	10.8%	9,021	10.5%	13,321	11.4%	11,391	8.6%	39.0%	-14.5%
25 to 34	9,884	16.5%	12,572	14.6%	16,924	14.4%	25,471	19.1%	27.2%	50.5%
35 to 44	8,397	14.0%	13,350	15.5%	15,425	13.2%	16,013	12.0%	59.0%	3.8%
45 to 54	5,692	9.5%	10,286	12.0%	14,738	12.6%	16,980	12.8%	80.7%	15.2%
55 to 64	4,405	7.3%	6,450	7.5%	10,981	9.4%	13,932	10.5%	46.4%	26.9%
65 to 74	3,670	6.1%	4,437	5.2%	6,642	5.7%	9,003	6.8%	20.9%	35.5%
75 +	2,739	4.6%	3,728	4.3%	5,561	4.7%	6,719	5.0%	36.1%	20.8%

Population by Race/Ethnicity

Race and Ethnicity Percent Composition



In 2011A, the predominant race/ethnicity category in this study area is **White**. The race & ethnicity category least represented in this geography is **American Indian, Alaska Native**.

A: White
 B: Asian Pac Islr
 C: Black
 D: Hispanic
 E: Amer Indian or Alaska Native
 F: Other or Multi Race

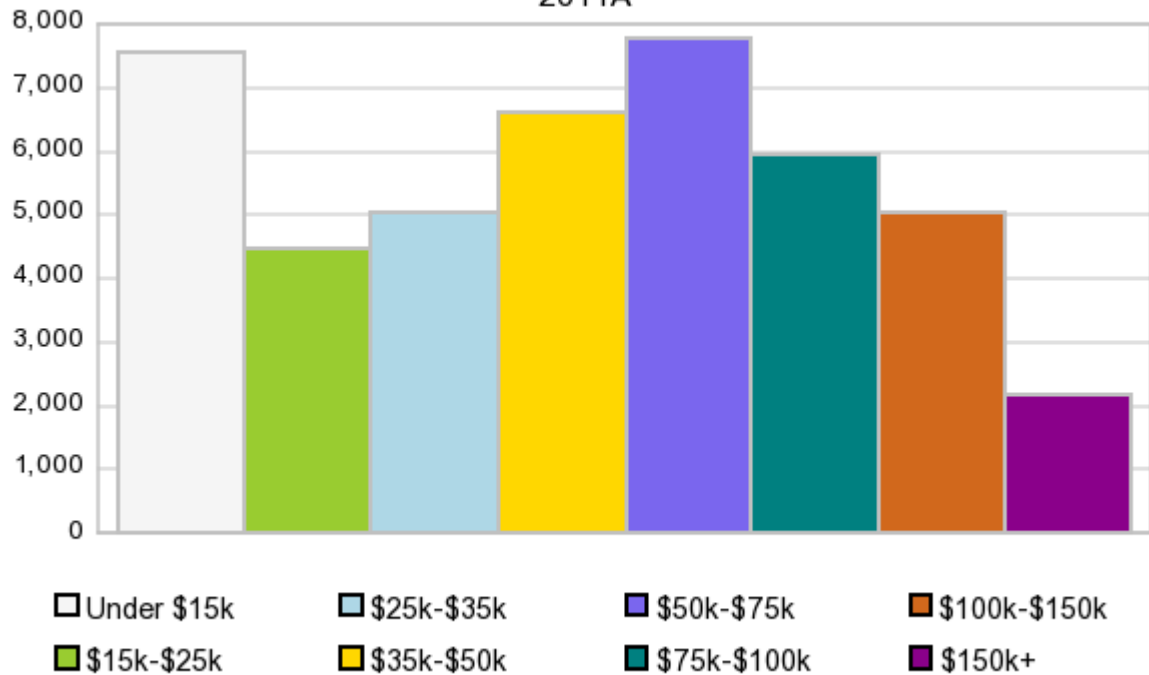
Race & Ethnicity

	2000		2010		2011A		2016		Percent Change	
	Census	%	Census	%	Estimate	%	Projection	%	2000 to 2010	2011 to 2016
White	75,973	88.3%	95,420	84.3%	98,646	84.2%	111,447	83.7%	25.6%	13.0%
Black	7,298	8.5%	11,568	10.2%	12,113	10.3%	14,357	10.8%	58.5%	18.5%
American Indian or Alaska Native	449	0.5%	658	0.6%	680	0.6%	768	0.6%	46.5%	12.9%
Asian/Hawaiian/PI	647	0.8%	1,325	1.2%	1,369	1.2%	1,538	1.2%	104.8%	12.3%
Some Other Race	589	0.7%	1,997	1.8%	1,427	1.2%	1,634	1.2%	239.1%	14.5%
Two or More Races	1,058	1.2%	2,269	2.0%	2,984	2.6%	3,362	2.5%	114.5%	12.7%
Hispanic Ethnicity	1,509	1.8%	4,435	3.9%	5,070	4.3%	7,584	5.7%	193.9%	49.6%
Not Hispanic or Latino	84,505	98.3%	108,802	96.1%	112,150	95.7%	125,520	94.3%	28.8%	11.9%

Households by Income

Households by Income Group 2011A

In 2011A the predominant household income category in this study area is **\$50K - \$75K**, and the income group that is least represented in this geography is **\$150K +**.



HH Income Categories*

	1990 Census		2000 Census		2011A Estimate		2016 Projection		Percent Change	
		%		%		%		%	1990 to 2000	2011 to 2016
\$0 - \$15,000	6,302	29.6%	5,643	17.7%	7,550	17.0%	8,672	16.6%	-10.5%	14.9%
\$15,000 - \$24,999	4,861	22.8%	4,608	14.5%	4,452	10.0%	4,457	8.6%	-5.2%	0.1%
\$25,000 - \$34,999	3,783	17.7%	4,385	13.8%	5,027	11.3%	5,366	10.3%	15.9%	6.7%
\$35,000 - \$49,999	3,657	17.1%	5,684	17.8%	6,598	14.8%	7,101	13.6%	55.4%	7.6%
\$50,000 - \$74,999	2,016	9.5%	6,302	19.8%	7,756	17.4%	8,525	16.4%	212.6%	9.9%
\$75,000 - \$99,999	409	1.9%	2,817	8.8%	5,946	13.4%	7,852	15.1%	588.8%	32.1%
\$100,000 - \$149,999	205	1.0%	1,645	5.2%	5,053	11.3%	7,171	13.8%	702.4%	41.9%
\$150,000 +	62	0.3%	798	2.5%	2,166	4.9%	2,954	5.7%	1,187.1%	36.4%
Average Hhld Income	\$28,163		\$47,770		\$60,128		\$66,715		69.6%	11.0%
Median Hhld Income	\$23,687		\$38,270		\$46,353		\$51,176		61.6%	10.4%
Per Capita Income	\$10,197		\$17,706		\$23,701		\$26,983		73.6%	13.8%

*This Census 2010 data has not yet been released

Current year data is for the year **2011**, 5 year projected data is for the year **2016**. More About Our Data.
Demographic data © 2011 by Experian/Applied Geographic Solutions.

Business List data © 2011 by D&B®. All rights reserved. All D&B information is powered by DUNSRight™, D&B's Quality Process.

Alteryx, DemographicsNow.com and the Alteryx and DemographicsNow.com logos are trademarks of Alteryx, Inc.
All rights reserved.

Privacy Statement | License Agreement