



Date: 04/19/12

Current Geography Selection: (1 Selected) Counties: Pulaski County

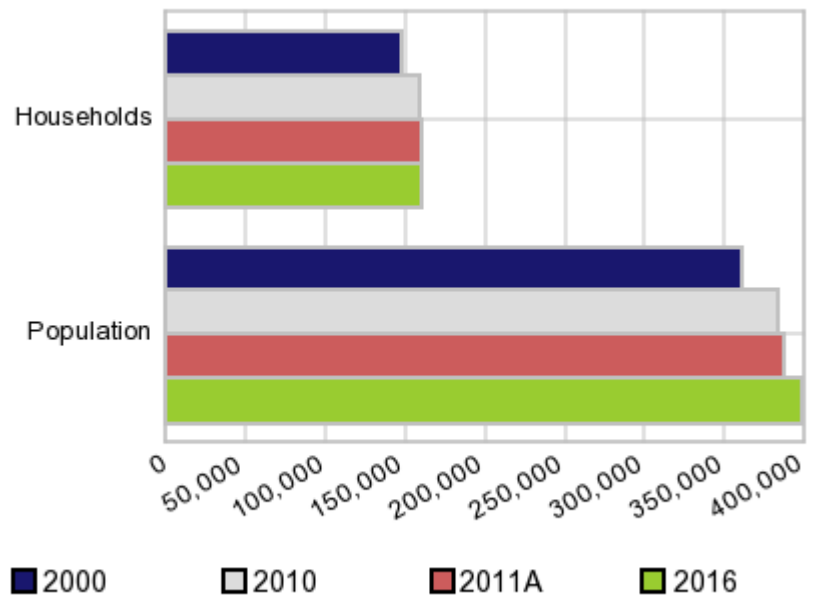
Executive Summary Report with Charts

Population Demographics:

The number of households in the study area in 2000 was **147,942** and changed to **158,772** in 2010, representing a change of **7.3%**. The household count in 2011A was **159,237** and the household projection for 2016 is **160,535**, a change of **0.8%**.

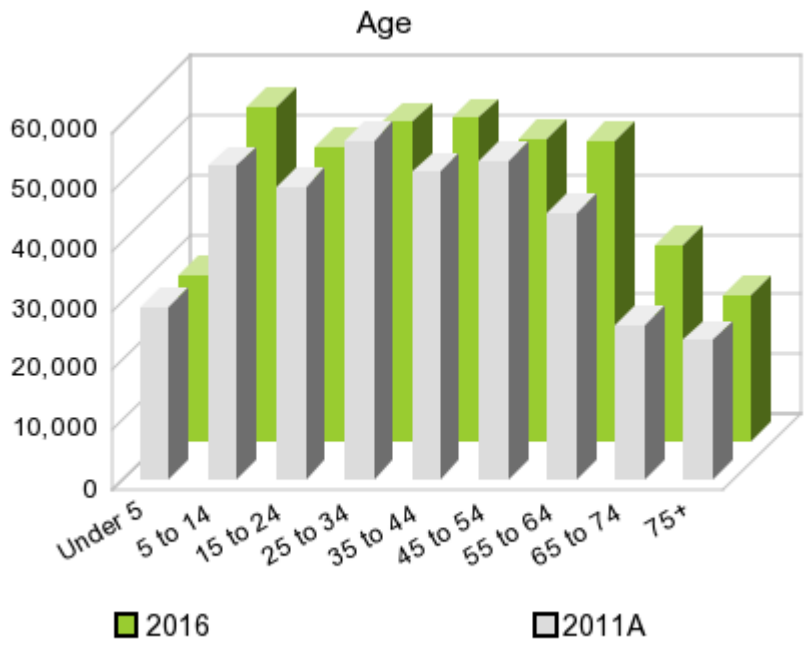
The population in the study area in 2000 was **361,474** and in 2010 it was **382,748**, roughly a **5.9%** change. The population in 2011A was **386,163** and the projection for 2016 is **399,295** representing a change of **3.4%**.

Population and Household Change



	2000 Census	2010 Census	2011A Estimate	2016 Projection	Percent Change	
					2000 to 2010	2011 to 2016
Total Population	361,474	382,748	386,163	399,295	5.9%	3.4%
Total Households	147,942	158,772	159,237	160,535	15.7%	0.8%

Population by Age



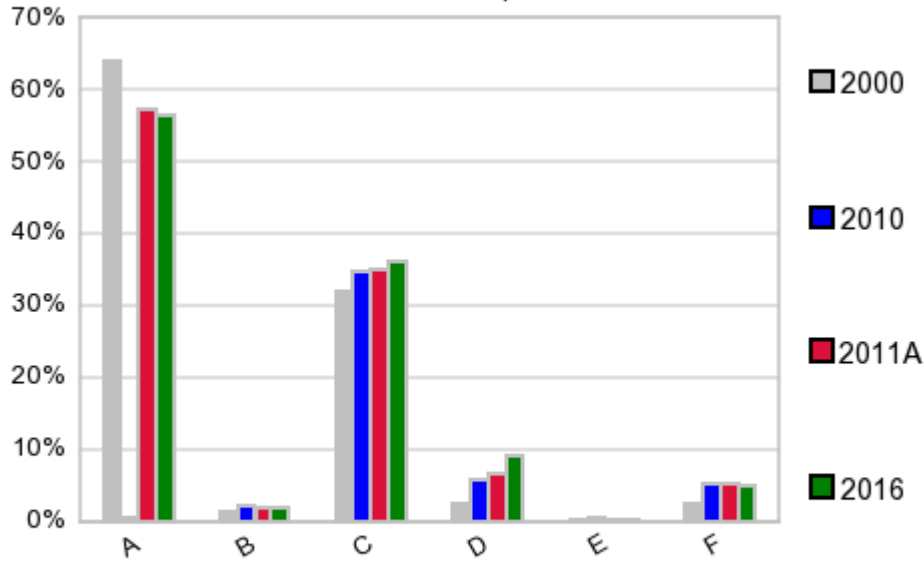
In 1990, the median age of the total population in the study area was **32**, and in 2000, it was **35**. The median age in 2011A is **36** and it is predicted to change in five years to **37** years. In 2011A, females represented **52.2%** of the population with a median age of **37** and males represented **47.8%** of the population with a median age of **35** years. In 2011A, the most prominent age group in this geography is **Age 25 to 34** years. The age group least represented in this geography is **75 +** years.

Age Groups*

	1990		2000		2011A		2016		Percent Change	
	Census	%	Census	%	Estimate	%	Projection	%	1990 to 2000	2011 to 2016
0 to 4	26,387	7.6%	25,905	7.2%	28,769	7.5%	27,998	7.0%	-1.8%	-2.7%
5 to 14	50,570	14.5%	50,133	13.9%	52,671	13.6%	56,225	14.1%	-0.9%	6.7%
15 to 19	24,478	7.0%	24,512	6.8%	24,010	6.2%	25,184	6.3%	0.1%	4.9%
20 to 24	25,764	7.4%	25,228	7.0%	25,032	6.5%	24,005	6.0%	-2.1%	-4.1%
25 to 34	64,488	18.4%	55,036	15.2%	56,753	14.7%	53,412	13.4%	-14.7%	-5.9%
35 to 44	55,053	15.7%	57,376	15.9%	51,441	13.3%	54,225	13.6%	4.2%	5.4%
45 to 54	35,147	10.1%	51,158	14.2%	53,635	13.9%	50,751	12.7%	45.6%	-5.4%
55 to 64	27,541	7.9%	30,701	8.5%	44,706	11.6%	50,401	12.6%	11.5%	12.7%
65 to 74	23,240	6.6%	21,574	6.0%	25,971	6.7%	32,915	8.2%	-7.2%	26.7%
75 +	16,985	4.9%	19,851	5.5%	23,193	6.0%	24,189	6.1%	16.9%	4.3%

Population by Race/Ethnicity

Race and Ethnicity Percent Composition



In 2011A, the predominant race/ethnicity category in this study area is **White**. The race & ethnicity category least represented in this geography is **American Indian, Alaska Native**.

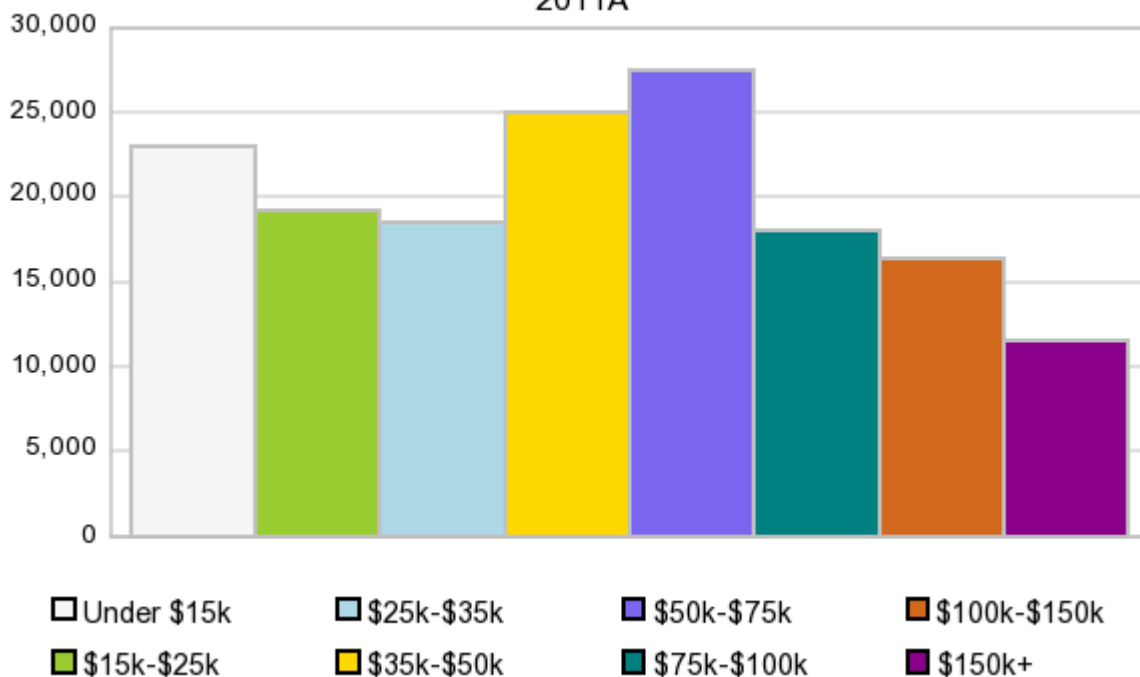
A: White
 B: Asian Pac Islr
 C: Black
 D: Hispanic
 E: Amer Indian or Alaska Native
 F: Other or Multi Race

Race & Ethnicity	2000		2010		2011A		2016		Percent Change	
	Census	%	Census	%	Estimate	%	Projection	%	2000 to 2010	2011 to 2016
White	231,211	64.0%	220,051	57.5%	221,289	57.3%	225,795	56.6%	-4.8%	2.0%
Black	115,197	31.9%	133,858	35.0%	135,936	35.2%	144,170	36.1%	16.2%	6.1%
American Indian or Alaska Native	1,409	0.4%	1,555	0.4%	1,562	0.4%	1,583	0.4%	10.4%	1.3%
Asian/Hawaiian/PI	4,659	1.3%	7,777	2.0%	7,797	2.0%	7,876	2.0%	66.9%	1.0%
Some Other Race	3,935	1.1%	11,646	3.0%	8,850	2.3%	8,874	2.2%	196.0%	0.3%
Two or More Races	5,063	1.4%	7,861	2.1%	10,737	2.8%	10,995	2.8%	55.3%	2.4%
Hispanic Ethnicity	8,816	2.4%	22,168	5.8%	25,120	6.5%	36,800	9.2%	151.5%	46.5%
Not Hispanic or Latino	352,658	97.6%	360,580	94.2%	361,040	93.5%	362,497	90.8%	2.2%	0.4%

Households by Income

Households by Income Group 2011A

In 2011A the predominant household income category in this study area is **\$50K - \$75K**, and the income group that is least represented in this geography is **\$150K +**.



HH Income Categories*

HH Income Categories*	1990 Census		2000 Census		2011A Estimate		2016 Projection		Percent Change	
	Count	%	Count	%	Count	%	Count	%	1990 to 2000	2011 to 2016
\$0 - \$15,000	36,083	26.3%	25,389	17.2%	23,062	14.5%	22,313	13.9%	-29.6%	-3.2%
\$15,000 - \$24,999	27,051	19.7%	21,546	14.6%	19,242	12.1%	18,334	11.4%	-20.4%	-4.7%
\$25,000 - \$34,999	22,554	16.4%	20,784	14.0%	18,536	11.6%	17,440	10.9%	-7.8%	-5.9%
\$35,000 - \$49,999	23,321	17.0%	25,919	17.5%	24,918	15.6%	23,869	14.9%	11.1%	-4.2%
\$50,000 - \$74,999	18,560	13.5%	26,844	18.1%	27,522	17.3%	27,131	16.9%	44.6%	-1.4%
\$75,000 - \$99,999	5,020	3.7%	12,729	8.6%	17,976	11.3%	19,550	12.2%	153.6%	8.8%
\$100,000 - \$149,999	2,894	2.1%	8,850	6.0%	16,397	10.3%	18,906	11.8%	205.8%	15.3%
\$150,000 +	1,727	1.3%	5,881	4.0%	11,575	7.3%	12,984	8.1%	240.5%	12.2%
Average Hhld Income	\$34,825		\$51,671		\$65,038		\$70,494		48.4%	8.4%
Median Hhld Income	\$26,978		\$38,300		\$46,001		\$48,846		42.0%	6.2%
Per Capita Income	\$13,784		\$21,148		\$27,438		\$29,035		53.4%	5.8%

*This Census 2010 data has not yet been released

Current year data is for the year **2011**, 5 year projected data is for the year **2016**. More About Our Data.
Demographic data ' 2011 by Experian/Applied Geographic Solutions.

Business List data ' 2011 by D&B^{fi}. All rights reserved. All D&B information is powered by DUNSRight™, D&B's Quality Process.

' 2011. DDR is brought to you by Alteryx, Inc.

Alteryx, DemographicsNow.com and the Alteryx and DemographicsNow.com logos are trademarks of Alteryx, Inc. All rights reserved.

Privacy Statement | License Agreement