



Date: 04/20/12

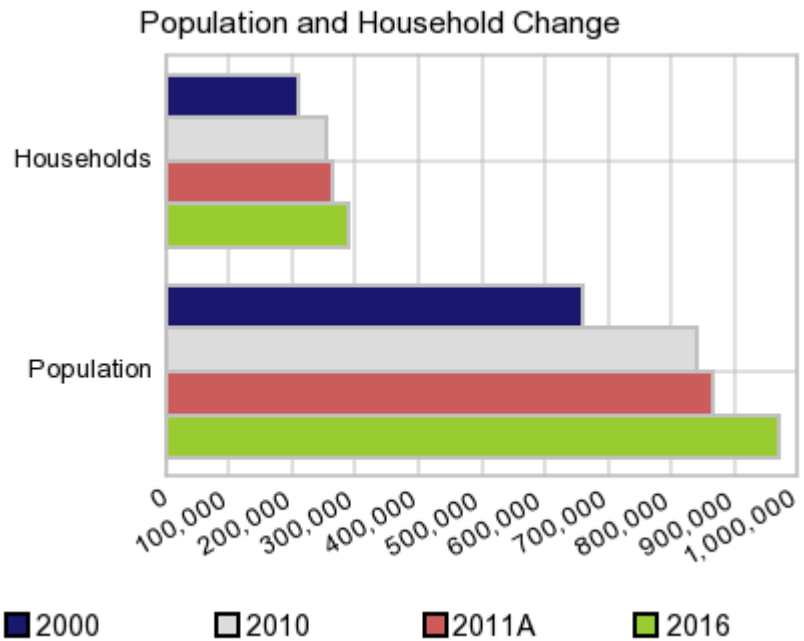
Current Geography Selection: (1 Selected) Counties: Kern County

Executive Summary Report with Charts

Population Demographics:

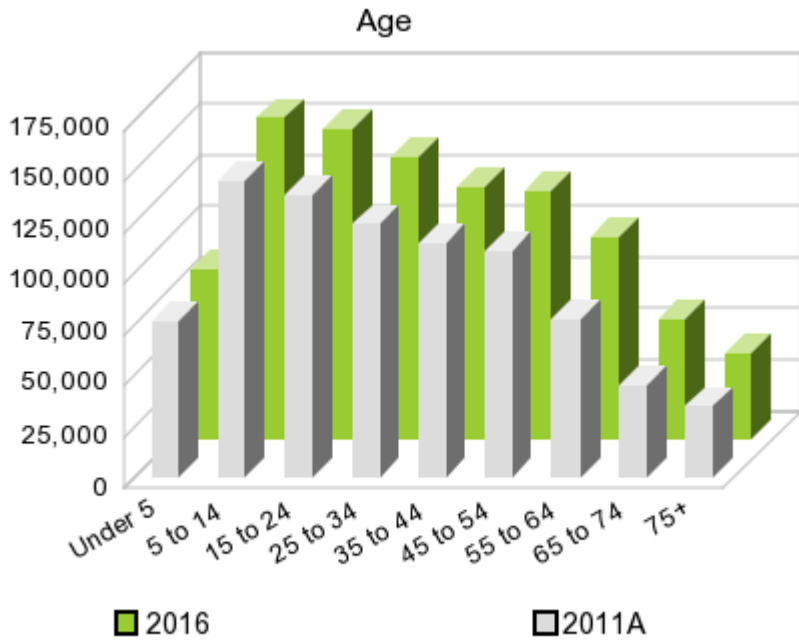
The number of households in the study area in 2000 was **208,655** and changed to **254,610** in 2010, representing a change of **22.0%**. The household count in 2011A was **261,750** and the household projection for 2016 is **290,349**, a change of **10.9%**.

The population in the study area in 2000 was **661,653** and in 2010 it was **839,631**, roughly a **26.9%** change. The population in 2011A was **865,775** and the projection for 2016 is **972,430** representing a change of **12.3%**.



	2000 Census	2010 Census	2011A Estimate	2016 Projection	Percent Change	
					2000 to 2010	2011 to 2016
Total Population	661,653	839,631	865,775	972,430	26.9%	12.3%
Total Households	208,655	254,610	261,750	290,349	40.3%	10.9%

Population by Age



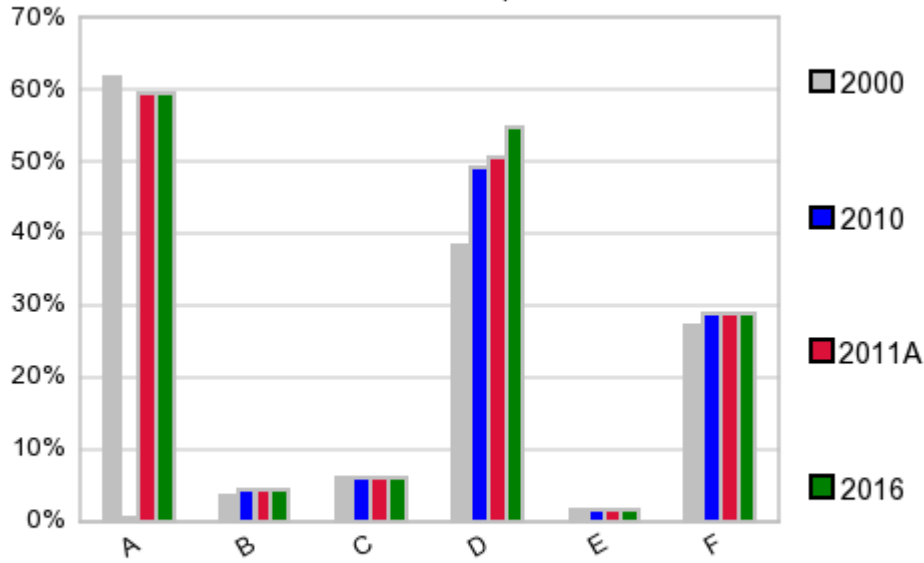
In 1990, the median age of the total population in the study area was **30**, and in 2000, it was **31**. The median age in 2011A is **31** and it is predicted to change in five years to **32** years. In 2011A, females represented **48.3%** of the population with a median age of **31** and males represented **51.7%** of the population with a median age of **30** years. In 2011A, the most prominent age group in this geography is **Age 5 to 14** years. The age group least represented in this geography is **75 +** years.

Age Groups*

	1990		2000		2011A		2016		Percent Change	
	Census	%	Census	%	Estimate	%	Projection	%	1990 to 2000	2011 to 2016
0 to 4	52,410	9.6%	55,707	8.4%	76,220	8.8%	83,482	8.6%	6.3%	9.5%
5 to 14	95,090	17.5%	121,203	18.3%	144,432	16.7%	156,580	16.1%	27.5%	8.4%
15 to 19	38,844	7.2%	55,224	8.4%	71,051	8.2%	75,984	7.8%	42.2%	6.9%
20 to 24	39,235	7.2%	46,811	7.1%	66,901	7.7%	75,224	7.7%	19.3%	12.4%
25 to 34	99,098	18.2%	93,251	14.1%	123,998	14.3%	138,337	14.2%	-5.9%	11.6%
35 to 44	77,943	14.3%	103,676	15.7%	114,455	13.2%	122,558	12.6%	33.0%	7.1%
45 to 54	48,891	9.0%	76,557	11.6%	110,732	12.8%	120,939	12.4%	56.6%	9.2%
55 to 64	39,258	7.2%	47,162	7.1%	77,313	8.9%	98,567	10.1%	20.1%	27.5%
65 to 74	32,133	5.9%	34,287	5.2%	45,586	5.3%	58,871	6.1%	6.7%	29.1%
75 +	20,579	3.8%	27,767	4.2%	35,090	4.1%	41,889	4.3%	34.9%	19.4%

Population by Race/Ethnicity

Race and Ethnicity Percent Composition



In 2011A, the predominant race/ethnicity category in this study area is **White**. The race & ethnicity category least represented in this geography is **American Indian, Alaska Native**.

A: White
 B: Asian Pac Islr
 C: Black
 D: Hispanic
 E: Amer Indian or Alaska Native
 F: Other or Multi Race

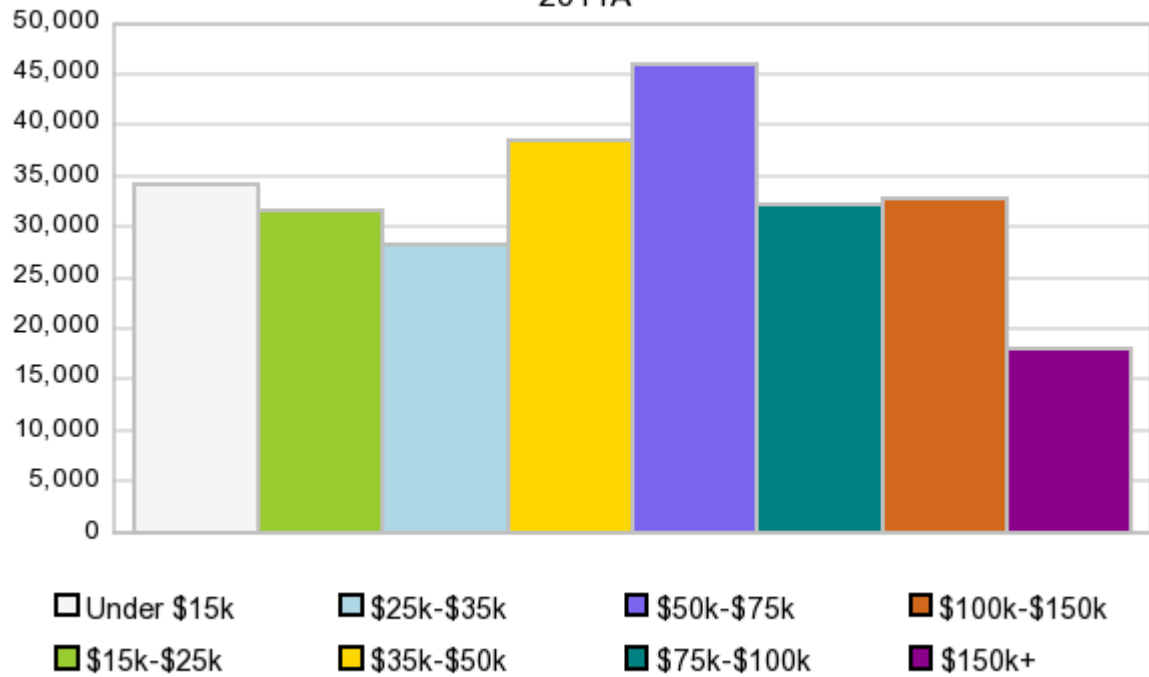
Race & Ethnicity

Race & Ethnicity	2000		2010		2011A		2016		Percent Change	
	Census	%	Census	%	Estimate	%	Projection	%	2000 to 2010	2011 to 2016
White	407,588	61.6%	499,766	59.5%	514,852	59.5%	577,747	59.4%	22.6%	12.2%
Black	39,798	6.0%	48,921	5.8%	50,494	5.8%	56,966	5.9%	22.9%	12.8%
American Indian or Alaska Native	9,999	1.5%	12,676	1.5%	13,064	1.5%	14,596	1.5%	26.8%	11.7%
Asian/Hawaiian/PI	23,240	3.5%	36,098	4.3%	37,351	4.3%	42,300	4.4%	55.3%	13.3%
Some Other Race	153,611	23.2%	204,314	24.3%	206,587	23.9%	231,999	23.9%	33.0%	12.3%
Two or More Races	27,417	4.1%	37,856	4.5%	43,408	5.0%	48,810	5.0%	38.1%	12.4%
Hispanic Ethnicity	254,037	38.4%	413,033	49.2%	436,456	50.4%	532,393	54.8%	62.6%	22.0%
Not Hispanic or Latino	407,616	61.6%	426,598	50.8%	429,320	49.6%	440,036	45.3%	4.7%	2.5%

Households by Income

Households by Income Group 2011A

In 2011A the predominant household income category in this study area is **\$50K - \$75K**, and the income group that is least represented in this geography is **\$150K +**.



HH Income Categories*

	1990 Census		2000 Census		2011A Estimate		2016 Projection		Percent Change	
	Count	%	Count	%	Count	%	Count	%	1990 to 2000	2000 to 2011
\$0 - \$15,000	46,136	25.4%	41,979	20.1%	34,089	13.0%	32,801	11.3%	-9.0%	-3.8%
\$15,000 - \$24,999	33,778	18.6%	32,578	15.6%	31,661	12.1%	32,291	11.1%	-3.6%	2.0%
\$25,000 - \$34,999	28,611	15.8%	28,506	13.7%	28,222	10.8%	28,835	9.9%	-0.4%	2.2%
\$35,000 - \$49,999	32,841	18.1%	33,362	16.0%	38,617	14.8%	41,769	14.4%	1.6%	8.2%
\$50,000 - \$74,999	26,312	14.5%	36,421	17.5%	46,023	17.6%	50,243	17.3%	38.4%	9.2%
\$75,000 - \$99,999	7,991	4.4%	18,449	8.8%	32,242	12.3%	38,622	13.3%	130.9%	19.8%
\$100,000 - \$149,999	3,851	2.1%	12,182	5.8%	32,867	12.6%	42,388	14.6%	216.3%	29.0%
\$150,000 +	1,924	1.1%	5,175	2.5%	18,014	6.9%	23,378	8.1%	169.0%	29.8%
Average Hhld Income	\$35,649		\$47,108		\$65,122		\$74,782		32.1%	14.8%
Median Hhld Income	\$28,661		\$35,486		\$49,227		\$54,114		23.8%	9.9%
Per Capita Income	\$12,077		\$14,856		\$21,398		\$24,154		23.0%	12.9%

*This Census 2010 data has not yet been released

Current year data is for the year **2011**, 5 year projected data is for the year **2016**. More About Our Data.
Demographic data © 2011 by Experian/Applied Geographic Solutions.

Business List data © 2011 by D&B®. All rights reserved. All D&B information is powered by DUNSRight™, D&B's Quality Process.

Alteryx, DemographicsNow.com and the Alteryx and DemographicsNow.com logos are trademarks of Alteryx, Inc.
All rights reserved.

Privacy Statement | License Agreement