



Date: 04/20/12

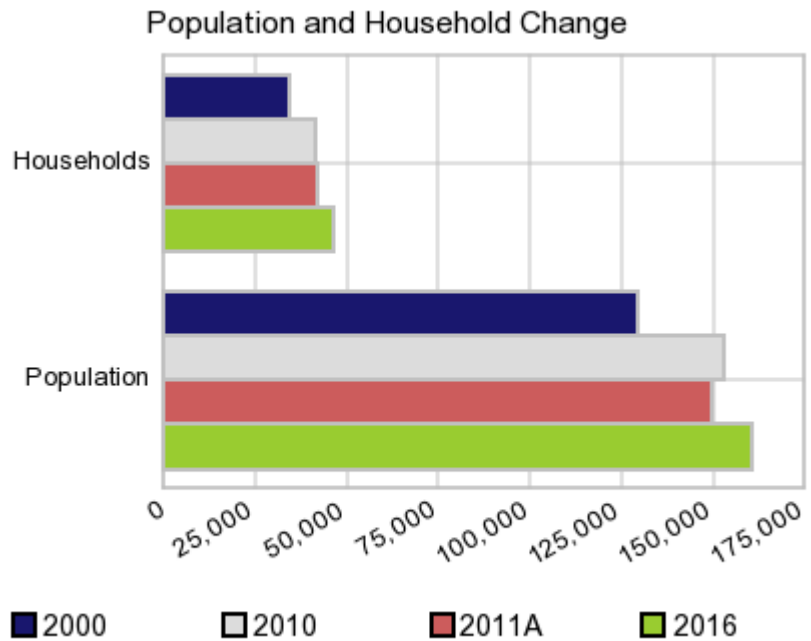
Current Geography Selection: (1 Selected) Counties: Kings County

Executive Summary Report with Charts

Population Demographics:

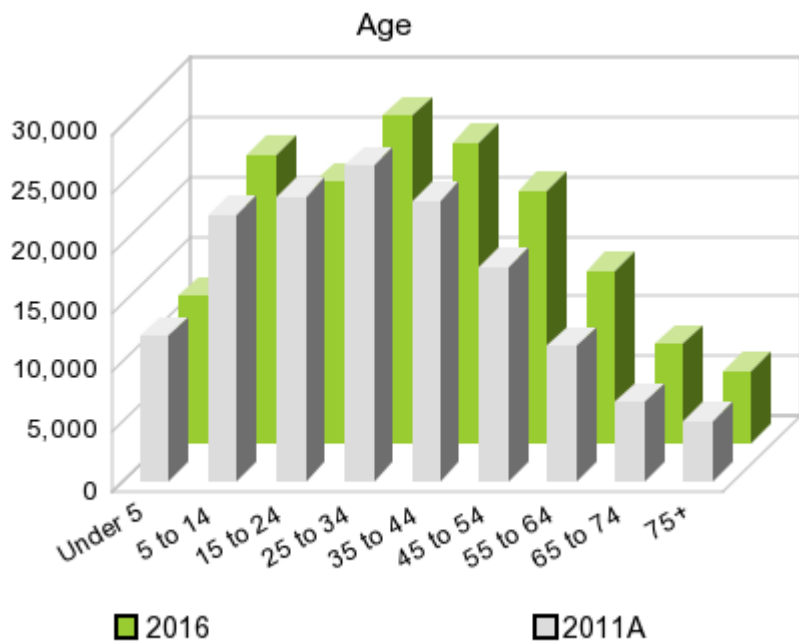
The number of households in the study area in 2000 was **34,418** and changed to **41,233** in 2010, representing a change of **19.8%**. The household count in 2011A was **42,231** and the household projection for 2016 is **46,217**, a change of **9.4%**.

The population in the study area in 2000 was **129,461** and in 2010 it was **152,982**, roughly a **18.2%** change. The population in 2011A was **149,414** and the projection for 2016 is **160,839** representing a change of **7.6%**.



	2000 Census	2010 Census	2011A Estimate	2016 Projection	Percent Change	
					2000 to 2010	2011 to 2016
Total Population	129,461	152,982	149,414	160,839	18.2%	7.6%
Total Households	34,418	41,233	42,231	46,217	41.8%	9.4%

Population by Age



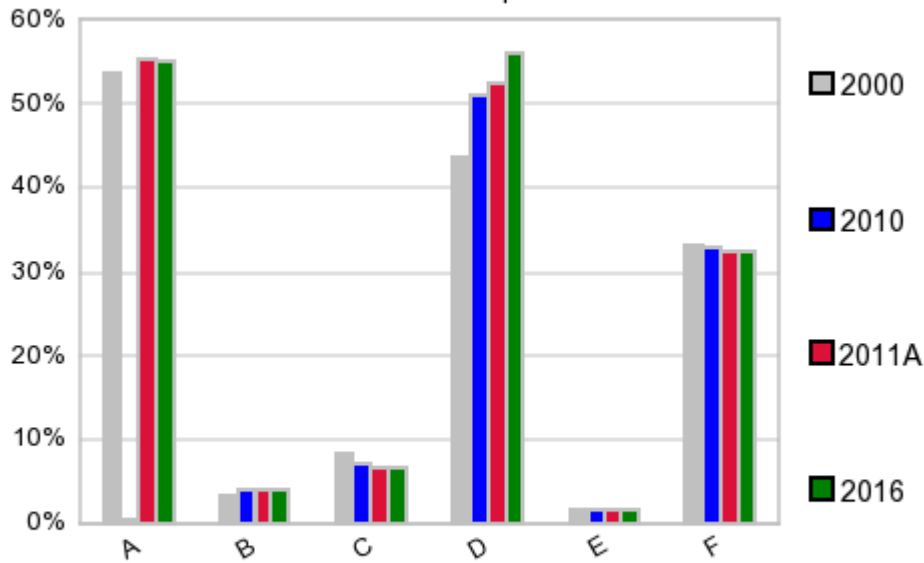
In 1990, the median age of the total population in the study area was **28**, and in 2000, it was **30**. The median age in 2011A is **31** and it is predicted to change in five years to **33** years. In 2011A, females represented **42.3%** of the population with a median age of **30** and males represented **57.7%** of the population with a median age of **32** years. In 2011A, the most prominent age group in this geography is **Age 25 to 34** years. The age group least represented in this geography is **75 +** years.

Age Groups*

	1990		2000		2011A		2016		Percent Change	
	Census	%	Census	%	Estimate	%	Projection	%	1990 to 2000	2011 to 2016
0 to 4	9,417	9.3%	10,437	8.1%	12,112	8.1%	12,322	7.7%	10.8%	1.7%
5 to 14	17,079	16.8%	21,137	16.3%	22,316	14.9%	24,170	15.0%	23.8%	8.3%
15 to 19	7,159	7.1%	10,014	7.7%	10,828	7.3%	10,914	6.8%	39.9%	0.8%
20 to 24	9,984	9.8%	11,228	8.7%	13,050	8.7%	10,929	6.8%	12.5%	-16.3%
25 to 34	21,379	21.1%	23,131	17.9%	26,427	17.7%	27,440	17.1%	8.2%	3.8%
35 to 44	14,319	14.1%	22,169	17.1%	23,505	15.7%	25,206	15.7%	54.8%	7.2%
45 to 54	8,201	8.1%	13,926	10.8%	17,974	12.0%	21,151	13.2%	69.8%	17.7%
55 to 64	6,106	6.0%	7,862	6.1%	11,396	7.6%	14,425	9.0%	28.8%	26.6%
65 to 74	4,648	4.6%	5,269	4.1%	6,721	4.5%	8,323	5.2%	13.4%	23.8%
75 +	3,177	3.1%	4,288	3.3%	5,096	3.4%	5,969	3.7%	35.0%	17.1%

Population by Race/Ethnicity

Race and Ethnicity Percent Composition



In 2011A, the predominant race/ethnicity category in this study area is **White**. The race & ethnicity category least represented in this geography is **American Indian, Alaska Native**.

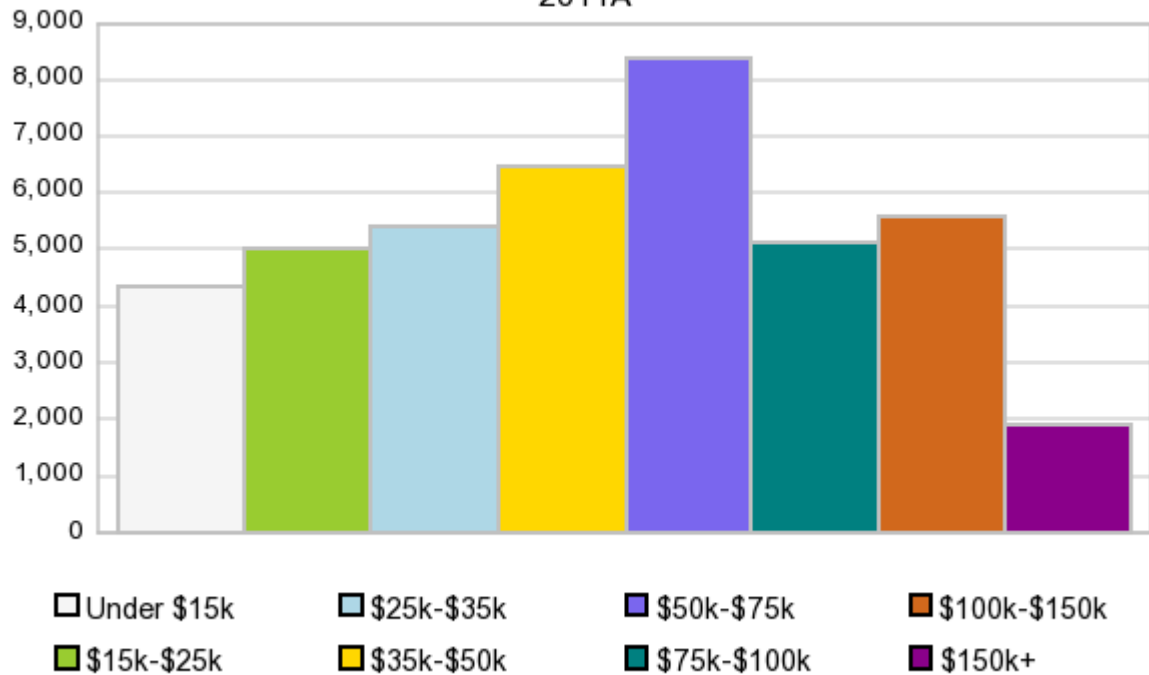
A: White
 B: Asian Pac Islr
 C: Black
 D: Hispanic
 E: Amer Indian or Alaska Native
 F: Other or Multi Race

Race & Ethnicity	2000		2010		2011A		2016		Percent Change	
	Census	%	Census	%	Estimate	%	Projection	%	2000 to 2010	2011 to 2016
White	69,492	53.7%	83,027	54.3%	82,725	55.4%	88,851	55.2%	19.5%	7.4%
Black	10,747	8.3%	11,014	7.2%	9,717	6.5%	10,554	6.6%	2.5%	8.6%
American Indian or Alaska Native	2,178	1.7%	2,562	1.7%	2,533	1.7%	2,710	1.7%	17.6%	7.0%
Asian/Hawaiian/PI	4,230	3.3%	5,891	3.9%	5,957	4.0%	6,452	4.0%	39.3%	8.3%
Some Other Race	36,611	28.3%	42,996	28.1%	40,479	27.1%	43,619	27.1%	17.4%	7.8%
Two or More Races	6,203	4.8%	7,492	4.9%	7,999	5.4%	8,651	5.4%	20.8%	8.2%
Hispanic Ethnicity	56,461	43.6%	77,866	50.9%	78,072	52.3%	90,301	56.1%	37.9%	15.7%
Not Hispanic or Latino	73,000	56.4%	75,116	49.1%	71,339	47.8%	70,537	43.9%	2.9%	-1.1%

Households by Income

Households by Income Group 2011A

In 2011A the predominant household income category in this study area is **\$50K - \$75K**, and the income group that is least represented in this geography is **\$150K +**.



HH Income Categories*

	1990 Census		2000 Census		2011A Estimate		2016 Projection		Percent Change	
		%		%		%		%	1990 to 2000	2011 to 2016
\$0 - \$15,000	7,914	27.2%	5,920	17.2%	4,334	10.3%	3,892	8.4%	-25.2%	-10.2%
\$15,000 - \$24,999	6,298	21.7%	5,752	16.7%	5,020	11.9%	4,843	10.5%	-8.7%	-3.5%
\$25,000 - \$34,999	5,198	17.9%	5,132	14.9%	5,405	12.8%	5,534	12.0%	-1.3%	2.4%
\$35,000 - \$49,999	4,958	17.0%	6,018	17.5%	6,471	15.3%	6,789	14.7%	21.4%	4.9%
\$50,000 - \$74,999	3,191	11.0%	6,170	17.9%	8,376	19.8%	9,477	20.5%	93.4%	13.1%
\$75,000 - \$99,999	826	2.8%	2,846	8.3%	5,119	12.1%	6,130	13.3%	244.6%	19.8%
\$100,000 - \$149,999	447	1.5%	1,678	4.9%	5,610	13.3%	7,362	15.9%	275.4%	31.2%
\$150,000 +	241	0.8%	902	2.6%	1,894	4.5%	2,194	4.7%	274.3%	15.8%
Average Hhld Income	\$32,093		\$48,710		\$66,256		\$73,890		51.8%	11.5%
Median Hhld Income	\$25,553		\$35,797		\$49,728		\$53,879		40.1%	8.3%
Per Capita Income	\$10,002		\$12,950		\$23,807		\$26,892		29.5%	13.0%

*This Census 2010 data has not yet been released

Current year data is for the year **2011**, 5 year projected data is for the year **2016**. More About Our Data.
Demographic data © 2011 by Experian/Applied Geographic Solutions.

Business List data © 2011 by D&B®. All rights reserved. All D&B information is powered by DUNSRight™, D&B's Quality Process.

Alteryx, DemographicsNow.com and the Alteryx and DemographicsNow.com logos are trademarks of Alteryx, Inc.
All rights reserved.

Privacy Statement | License Agreement