



Date: 04/20/12

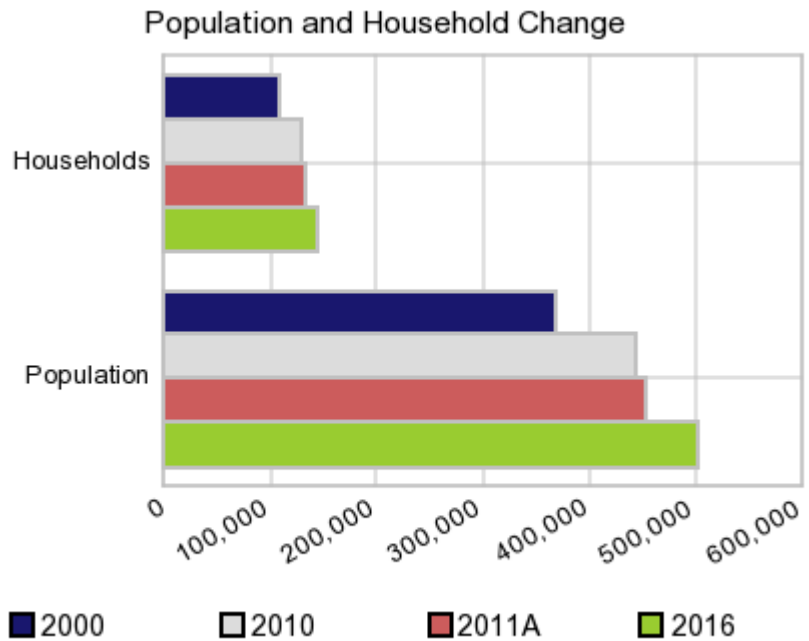
Current Geography Selection: (1 Selected) Counties: Tulare County

## Executive Summary Report with Charts

### Population Demographics:

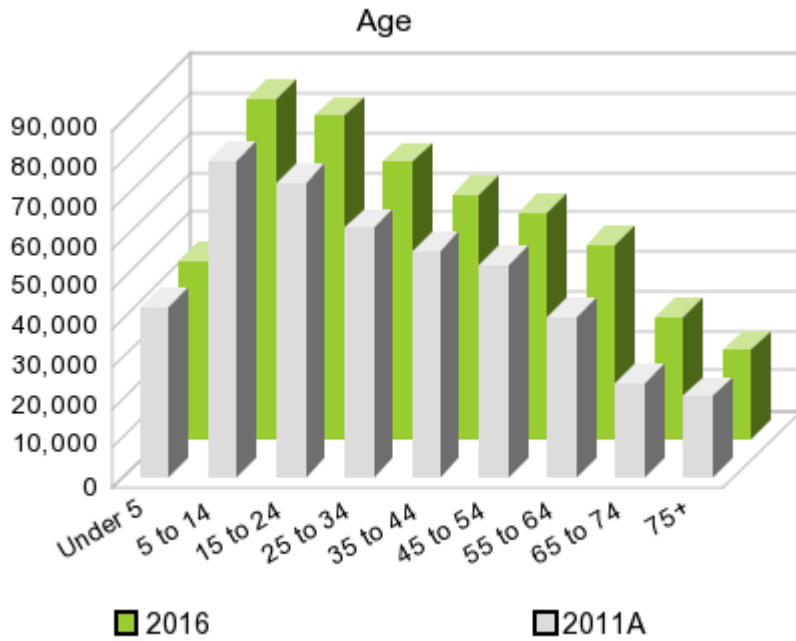
The number of households in the study area in 2000 was **110,385** and changed to **130,352** in 2010, representing a change of **18.1%**. The household count in 2011A was **133,241** and the household projection for 2016 is **144,798**, a change of **8.7%**.

The population in the study area in 2000 was **368,021** and in 2010 it was **442,179**, roughly a **20.2%** change. The population in 2011A was **453,947** and the projection for 2016 is **501,000** representing a change of **10.4%**.



	2000 Census	2010 Census	2011A Estimate	2016 Projection	Percent Change	
					2000 to 2010	2011 to 2016
Total Population	368,021	442,179	453,947	501,000	20.2%	10.4%
Total Households	110,385	130,352	133,241	144,798	33.2%	8.7%

### Population by Age



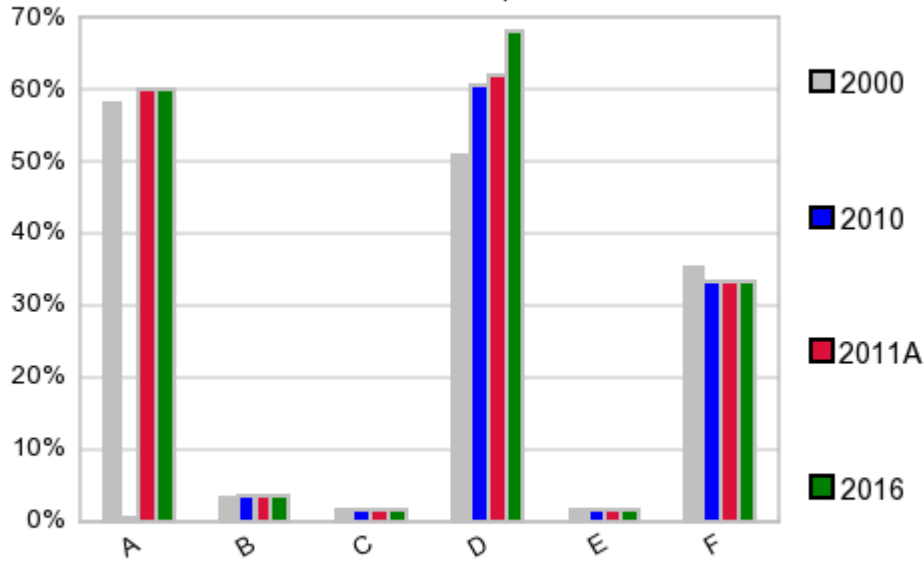
In 1990, the median age of the total population in the study area was **29**, and in 2000, it was **29**. The median age in 2011A is **30** and it is predicted to change in five years to **30** years. In 2011A, females represented **49.7%** of the population with a median age of **31** and males represented **50.3%** of the population with a median age of **29** years. In 2011A, the most prominent age group in this geography is **Age 5 to 14** years. The age group least represented in this geography is **75 +** years.

**Age Groups\***

	1990		2000		2011A		2016		Percent Change	
	Census	%	Census	%	Estimate	%	Projection	%	1990 to 2000	2011 to 2016
0 to 4	29,124	9.3%	32,826	8.9%	42,630	9.4%	44,730	8.9%	12.7%	4.9%
5 to 14	58,798	18.9%	70,599	19.2%	79,781	17.6%	85,514	17.1%	20.1%	7.2%
15 to 19	24,909	8.0%	33,521	9.1%	38,914	8.6%	41,073	8.2%	34.6%	5.5%
20 to 24	22,172	7.1%	26,498	7.2%	34,832	7.7%	40,314	8.0%	19.5%	15.7%
25 to 34	50,122	16.1%	49,905	13.6%	62,876	13.9%	69,761	13.9%	-0.4%	11.0%
35 to 44	42,372	13.6%	51,603	14.0%	57,024	12.6%	61,169	12.2%	21.8%	7.3%
45 to 54	28,192	9.0%	41,246	11.2%	53,518	11.8%	56,958	11.4%	46.3%	6.4%
55 to 64	22,448	7.2%	25,906	7.0%	40,367	8.9%	48,514	9.7%	15.4%	20.2%
65 to 74	19,356	6.2%	18,996	5.2%	23,794	5.2%	30,497	6.1%	-1.9%	28.2%
75 +	14,434	4.6%	16,921	4.6%	20,253	4.5%	22,463	4.5%	17.2%	10.9%

**Population by Race/Ethnicity**

### Race and Ethnicity Percent Composition



In 2011A, the predominant race/ethnicity category in this study area is **Hispanic**. The race & ethnicity category least represented in this geography is **American Indian, Alaska Native**.

A: White  
 B: Asian Pac Islldr  
 C: Black  
 D: Hispanic  
 E: Amer Indian or Alaska Native  
 F: Other or Multi Race

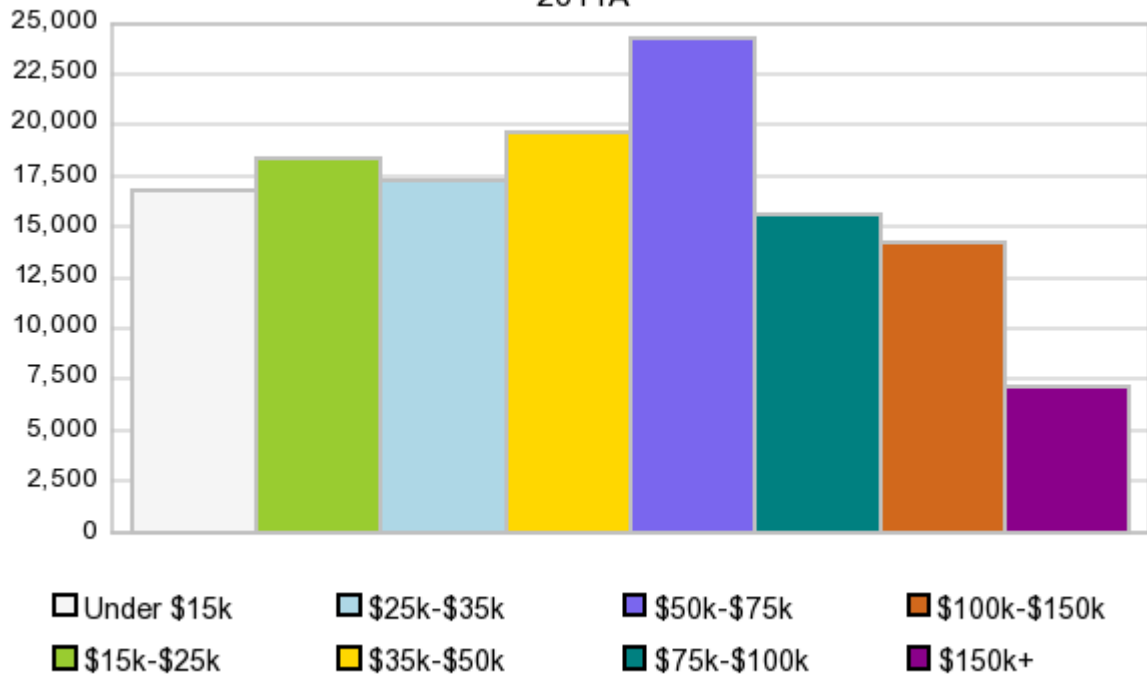
### Race & Ethnicity

Race & Ethnicity	2000		2010		2011A		2016		Percent Change	
	Census	%	Census	%	Estimate	%	Projection	%	2000 to 2010	2011 to 2016
White	213,751	58.1%	265,618	60.1%	272,630	60.1%	300,661	60.0%	24.3%	10.3%
Black	5,852	1.6%	7,196	1.6%	7,400	1.6%	8,225	1.6%	23.0%	11.1%
American Indian or Alaska Native	5,737	1.6%	6,993	1.6%	7,172	1.6%	7,876	1.6%	21.9%	9.8%
Asian/Hawaiian/PI	12,426	3.4%	15,685	3.5%	16,143	3.6%	17,990	3.6%	26.2%	11.4%
Some Other Race	113,317	30.8%	128,263	29.0%	128,320	28.3%	141,546	28.3%	13.2%	10.3%
Two or More Races	16,938	4.6%	18,424	4.2%	22,283	4.9%	24,705	4.9%	8.8%	10.9%
Hispanic Ethnicity	186,846	50.8%	268,065	60.6%	282,705	62.3%	341,267	68.1%	43.5%	20.7%
Not Hispanic or Latino	181,175	49.2%	174,114	39.4%	171,237	37.7%	159,732	31.9%	-3.9%	-6.7%

### Households by Income

### Households by Income Group 2011A

In 2011A the predominant household income category in this study area is **\$50K - \$75K**, and the income group that is least represented in this geography is **\$150K +**.



#### HH Income Categories\*

	1990 Census		2000 Census		2011A Estimate		2016 Projection		Percent Change	
		%		%		%		%	1990 to 2000	2011 to 2016
\$0 - \$15,000	29,603	30.2%	22,155	20.1%	16,786	12.6%	15,134	10.5%	-25.2%	-9.8%
\$15,000 - \$24,999	20,238	20.7%	18,238	16.5%	18,301	13.7%	18,643	12.9%	-9.9%	1.9%
\$25,000 - \$34,999	15,946	16.3%	16,184	14.7%	17,317	13.0%	17,965	12.4%	1.5%	3.7%
\$35,000 - \$49,999	15,063	15.4%	18,805	17.0%	19,637	14.7%	19,979	13.8%	24.8%	1.7%
\$50,000 - \$74,999	11,128	11.4%	18,520	16.8%	24,227	18.2%	26,495	18.3%	66.4%	9.4%
\$75,000 - \$99,999	3,316	3.4%	8,049	7.3%	15,618	11.7%	19,197	13.3%	142.7%	22.9%
\$100,000 - \$149,999	1,512	1.5%	5,579	5.1%	14,211	10.7%	18,323	12.7%	269.0%	28.9%
\$150,000 +	1,042	1.1%	2,855	2.6%	7,140	5.4%	9,057	6.3%	174.0%	26.8%
Average Hhld Income	\$32,116		\$45,975		\$60,667		\$69,156		43.2%	14.0%
Median Hhld Income	\$24,459		\$34,100		\$45,655		\$50,512		39.4%	10.6%
Per Capita Income	\$10,251		\$13,790		\$18,186		\$20,399		34.5%	12.2%

\*This Census 2010 data has not yet been released

Current year data is for the year **2011**, 5 year projected data is for the year **2016**. More About Our Data.  
Demographic data © 2011 by Experian/Applied Geographic Solutions.

Business List data © 2011 by D&B®. All rights reserved. All D&B information is powered by DUNSRight™, D&B's Quality Process.

Alteryx, DemographicsNow.com and the Alteryx and DemographicsNow.com logos are trademarks of Alteryx, Inc.  
All rights reserved.

Privacy Statement | License Agreement