



Date: 04/23/12

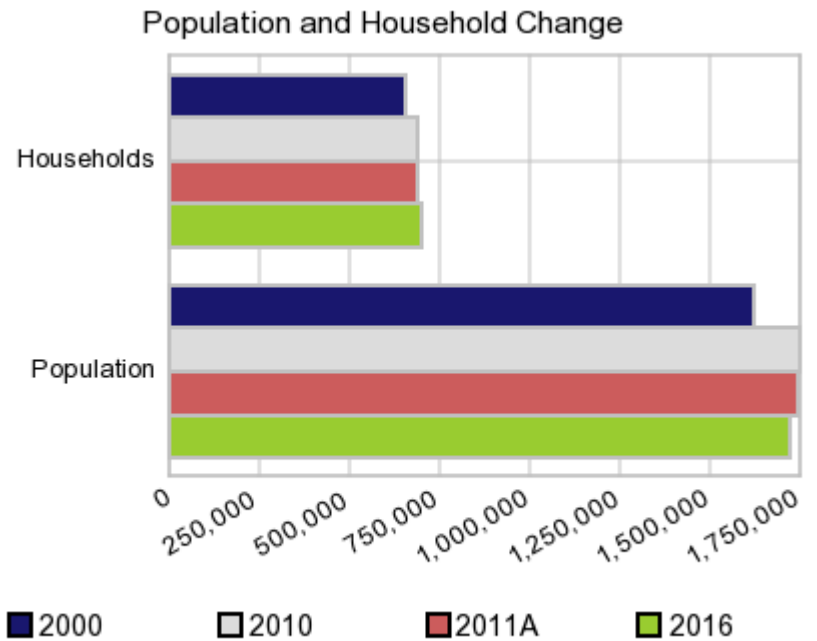
Current Geography Selection: (1 Selected) Counties: Broward County

Executive Summary Report with Charts

Population Demographics:

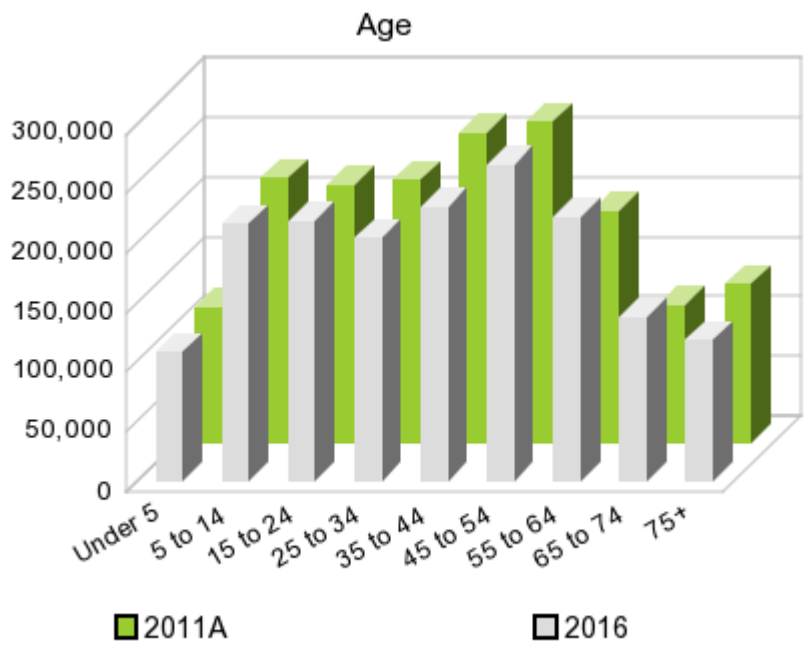
The number of households in the study area in 2000 was **654,445** and changed to **686,047** in 2010, representing a change of **4.8%**. The household count in 2011A was **689,669** and the household projection for 2016 is **704,252**, a change of **2.1%**.

The population in the study area in 2000 was **1,623,018** and in 2010 it was **1,748,066**, roughly a **7.7%** change. The population in 2011A was **1,743,000** and the projection for 2016 is **1,723,036** representing a change of **-1.1%**.



	2000 Census	2010 Census	2011A Estimate	2016 Projection	Percent Change	
					2000 to 2010	2010 to 2016
Total Population	1,623,018	1,748,066	1,743,000	1,723,036	7.7%	-1.1%
Total Households	654,445	686,047	689,669	704,252	29.8%	2.1%

Population by Age



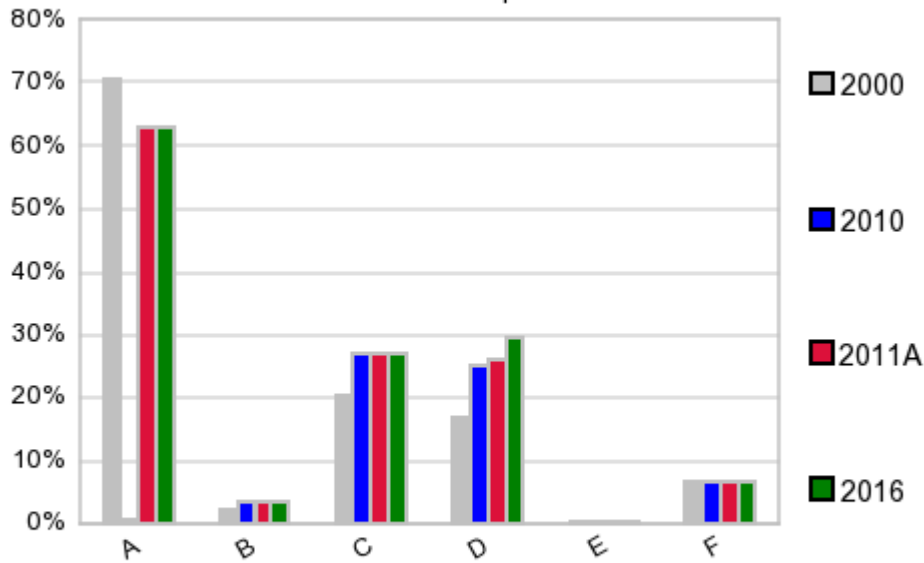
In 1990, the median age of the total population in the study area was **38**, and in 2000, it was **38**. The median age in 2011A is **39** and it is predicted to change in five years to **40** years. In 2011A, females represented **51.4%** of the population with a median age of **40** and males represented **48.6%** of the population with a median age of **38** years. In 2011A, the most prominent age group in this geography is **Age 45 to 54** years. The age group least represented in this geography is **18 to 24** years.

Age Groups*

	1990		2000		2011A		2016		Percent Change	
	Census	%	Census	%	Estimate	%	Projection	%	1990 to 2000	2011 to 2016
0 to 4	78,987	6.3%	103,041	6.4%	113,195	6.5%	107,845	6.3%	30.5%	-4.7%
5 to 14	137,962	11.0%	219,274	13.5%	222,227	12.8%	216,314	12.6%	58.9%	-2.7%
15 to 19	66,482	5.3%	95,161	5.9%	112,237	6.4%	109,547	6.4%	43.1%	-2.4%
20 to 24	75,661	6.0%	82,834	5.1%	103,068	5.9%	109,330	6.3%	9.5%	6.1%
25 to 34	214,801	17.1%	230,864	14.2%	220,783	12.7%	203,768	11.8%	7.5%	-7.7%
35 to 44	186,331	14.8%	278,547	17.2%	259,977	14.9%	230,592	13.4%	49.5%	-11.3%
45 to 54	124,087	9.9%	215,086	13.3%	268,892	15.4%	265,850	15.4%	73.3%	-1.1%
55 to 64	110,435	8.8%	137,102	8.4%	195,181	11.2%	222,629	12.9%	24.1%	14.1%
65 to 74	133,444	10.6%	116,641	7.2%	115,013	6.6%	138,329	8.0%	-12.6%	20.3%
75 +	127,308	10.1%	144,468	8.9%	132,383	7.6%	118,810	6.9%	13.5%	-10.3%

Population by Race/Ethnicity

Race and Ethnicity Percent Composition



In 2011A, the predominant race/ethnicity category in this study area is **White**. The race & ethnicity category least represented in this geography is **American Indian, Alaska Native**.

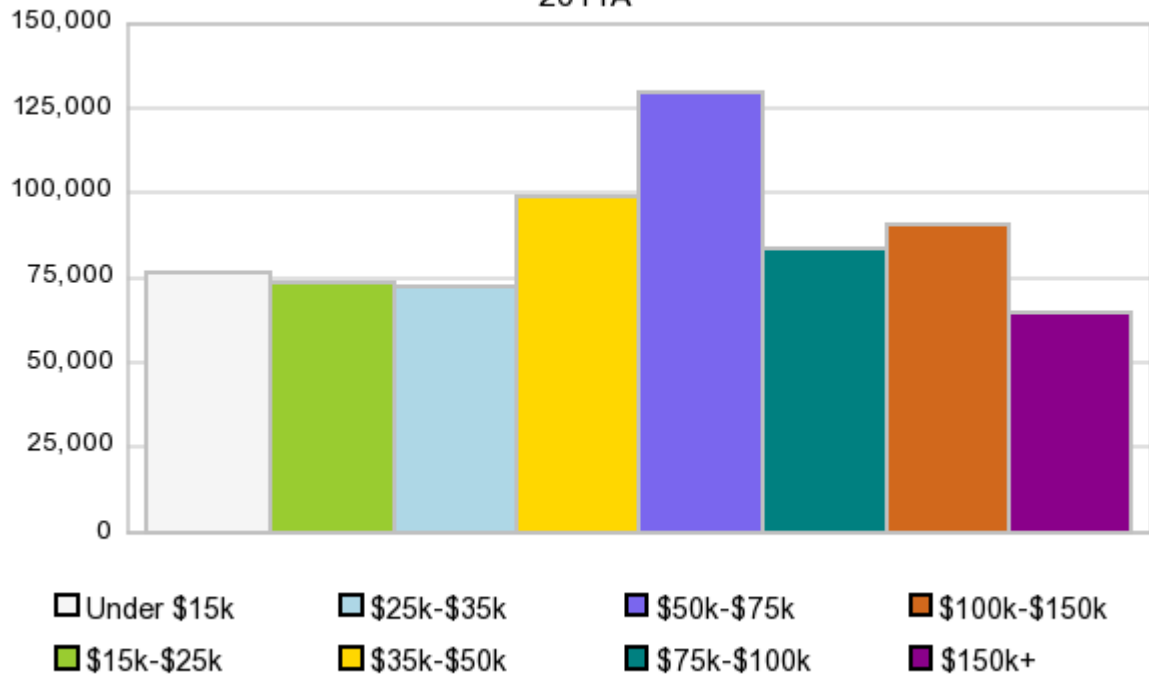
A: White
 B: Asian Pac Islldr
 C: Black
 D: Hispanic
 E: Amer Indian or Alaska Native
 F: Other or Multi Race

Race & Ethnicity	2000		2010		2011A		2016		Percent Change	
	Census	%	Census	%	Estimate	%	Projection	%	2000 to 2010	2011 to 2016
White	1,145,287	70.6%	1,102,231	63.1%	1,098,730	63.0%	1,084,965	63.0%	-3.8%	-1.3%
Black	333,304	20.5%	467,519	26.7%	466,650	26.8%	463,099	26.9%	40.3%	-0.8%
American Indian or Alaska Native	3,867	0.2%	5,065	0.3%	5,050	0.3%	4,972	0.3%	31.0%	-1.5%
Asian/Hawaiian/PI	37,497	2.3%	57,706	3.3%	57,495	3.3%	56,722	3.3%	53.9%	-1.3%
Some Other Race	48,642	3.0%	64,694	3.7%	56,410	3.2%	55,477	3.2%	33.0%	-1.7%
Two or More Races	54,421	3.4%	50,851	2.9%	58,661	3.4%	57,798	3.4%	-6.6%	-1.5%
Hispanic Ethnicity	271,652	16.7%	438,247	25.1%	452,341	26.0%	508,695	29.5%	61.3%	12.5%
Not Hispanic or Latino	1,351,366	83.3%	1,309,819	74.9%	1,290,661	74.1%	1,214,320	70.5%	-3.1%	-5.9%

Households by Income

Households by Income Group 2011A

In 2011A the predominant household income category in this study area is **\$50K - \$75K**, and the income group that is least represented in this geography is **\$150K +**.



HH Income Categories*

	1990 Census		2000 Census		2011A Estimate		2016 Projection		Percent Change	
		%		%		%		%	1990 to 2000	2011 to 2016
\$0 - \$15,000	117,125	22.2%	102,005	15.6%	76,542	11.1%	68,850	9.8%	-12.9%	-10.1%
\$15,000 - \$24,999	98,234	18.6%	86,022	13.1%	73,860	10.7%	70,329	10.0%	-12.4%	-4.8%
\$25,000 - \$34,999	84,624	16.0%	85,534	13.1%	71,964	10.4%	67,641	9.6%	1.1%	-6.0%
\$35,000 - \$49,999	93,840	17.8%	107,030	16.4%	98,986	14.4%	96,065	13.6%	14.1%	-3.0%
\$50,000 - \$74,999	81,547	15.4%	123,927	18.9%	129,168	18.7%	130,764	18.6%	52.0%	1.2%
\$75,000 - \$99,999	28,183	5.3%	66,169	10.1%	83,731	12.1%	89,955	12.8%	134.8%	7.4%
\$100,000 - \$149,999	15,482	2.9%	52,068	8.0%	90,584	13.1%	104,616	14.9%	236.3%	15.5%
\$150,000 +	9,277	1.8%	31,690	4.8%	64,844	9.4%	76,036	10.8%	241.6%	17.3%
Average Hhld Income	\$39,813		\$56,806		\$75,034		\$84,276		42.7%	12.3%
Median Hhld Income	\$30,590		\$41,984		\$53,770		\$58,782		37.2%	9.3%
Per Capita Income	\$16,848		\$22,906		\$30,167		\$34,936		36.0%	15.8%

*This Census 2010 data has not yet been released

Current year data is for the year **2011**, 5 year projected data is for the year **2016**. More About Our Data.
Demographic data © 2011 by Experian/Applied Geographic Solutions.

Business List data © 2011 by D&B®. All rights reserved. All D&B information is powered by DUNSRight™, D&B's Quality Process.

Alteryx, DemographicsNow.com and the Alteryx and DemographicsNow.com logos are trademarks of Alteryx, Inc.
All rights reserved.

Privacy Statement | License Agreement