



Date: 04/23/12

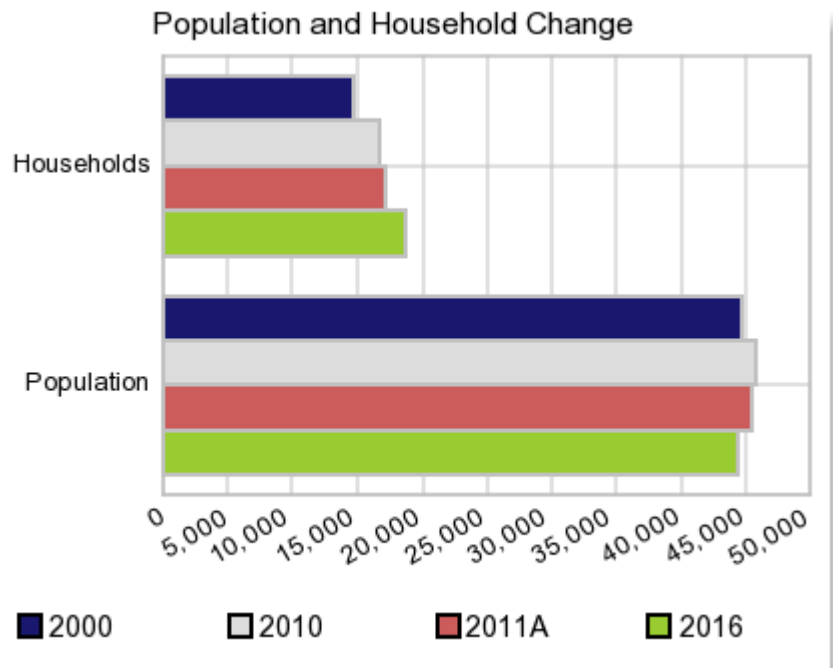
Current Geography Selection: (1 Selected) Counties: Baldwin County

Executive Summary Report with Charts

Population Demographics:

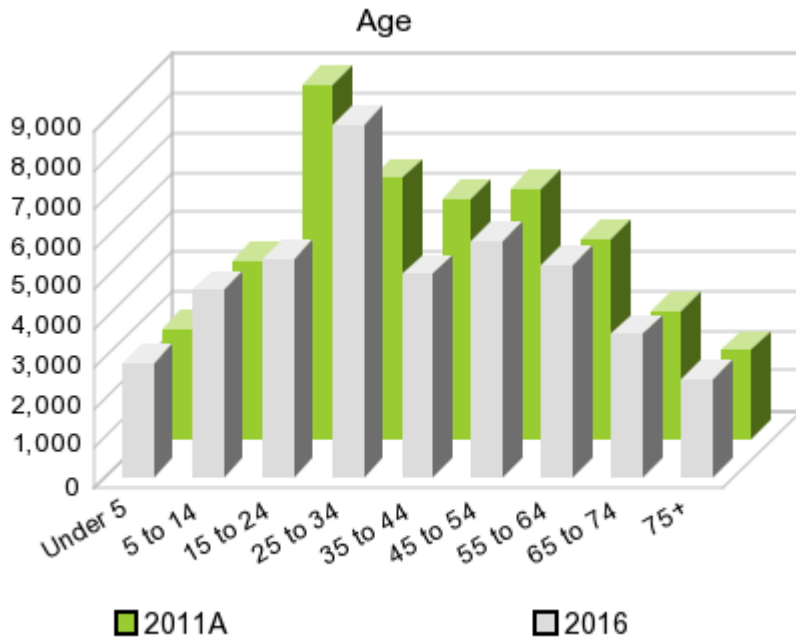
The number of households in the study area in 2000 was **14,758** and changed to **16,788** in 2010, representing a change of **13.8%**. The household count in 2011A was **17,159** and the household projection for 2016 is **18,636**, a change of **8.6%**.

The population in the study area in 2000 was **44,700** and in 2010 it was **45,720**, roughly a **2.3%** change. The population in 2011A was **45,466** and the projection for 2016 is **44,394** representing a change of **-2.4%**.



	2000 Census	2010 Census	2011A Estimate	2016 Projection	Percent Change	
					2000 to 2010	2011 to 2016
Total Population	44,700	45,720	45,466	44,394	2.3%	-2.4%
Total Households	14,758	16,788	17,159	18,636	38.0%	8.6%

Population by Age



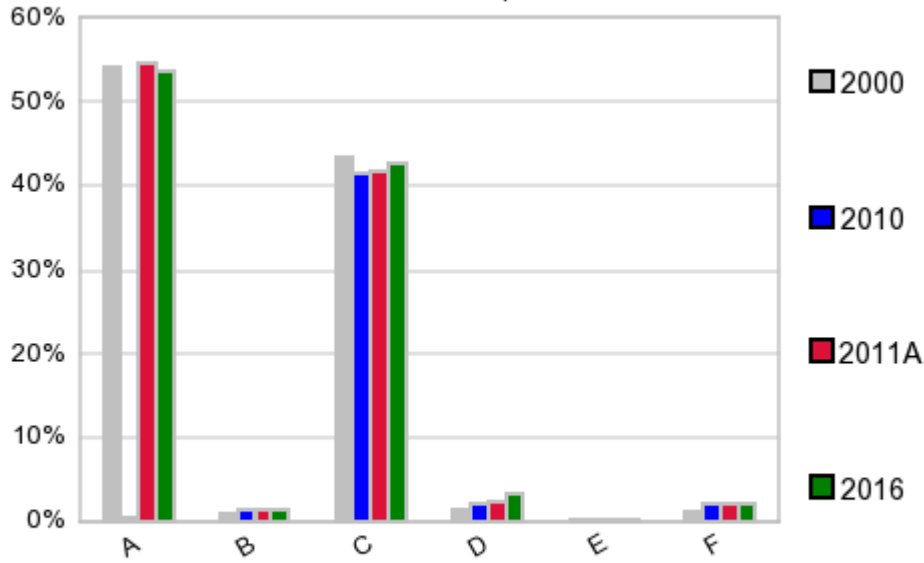
In 1990, the median age of the total population in the study area was **32**, and in 2000, it was **34**. The median age in 2011A is **35** and it is predicted to change in five years to **35** years. In 2011A, females represented **45.9%** of the population with a median age of **35** and males represented **54.1%** of the population with a median age of **35** years. In 2011A, the most prominent age group in this geography is **Age 25 to 34** years. The age group least represented in this geography is **75 +** years.

Age Groups*

	1990 Census		2000 Census		2011A Estimate		2016 Projection		Percent Change	
		%		%		%		%	1990 to 2000	2011 to 2016
0 to 4	2,387	6.0%	2,288	5.1%	2,751	6.1%	2,847	6.4%	-4.1%	3.5%
5 to 14	5,042	12.8%	5,428	12.1%	4,494	9.9%	4,714	10.6%	7.7%	4.9%
15 to 19	3,205	8.1%	4,081	9.1%	3,570	7.9%	2,154	4.9%	27.3%	-39.7%
20 to 24	3,800	9.6%	4,423	9.9%	5,315	11.7%	3,341	7.5%	16.4%	-37.1%
25 to 34	7,682	19.4%	6,669	14.9%	6,578	14.5%	8,868	20.0%	-13.2%	34.8%
35 to 44	5,984	15.1%	7,288	16.3%	6,041	13.3%	5,090	11.5%	21.8%	-15.7%
45 to 54	4,033	10.2%	5,911	13.2%	6,258	13.8%	5,947	13.4%	46.6%	-5.0%
55 to 64	3,166	8.0%	3,896	8.7%	5,010	11.0%	5,336	12.0%	23.1%	6.5%
65 to 74	2,504	6.3%	2,676	6.0%	3,187	7.0%	3,603	8.1%	6.9%	13.1%
75 +	1,727	4.4%	2,040	4.6%	2,244	4.9%	2,483	5.6%	18.1%	10.7%

Population by Race/Ethnicity

Race and Ethnicity Percent Composition



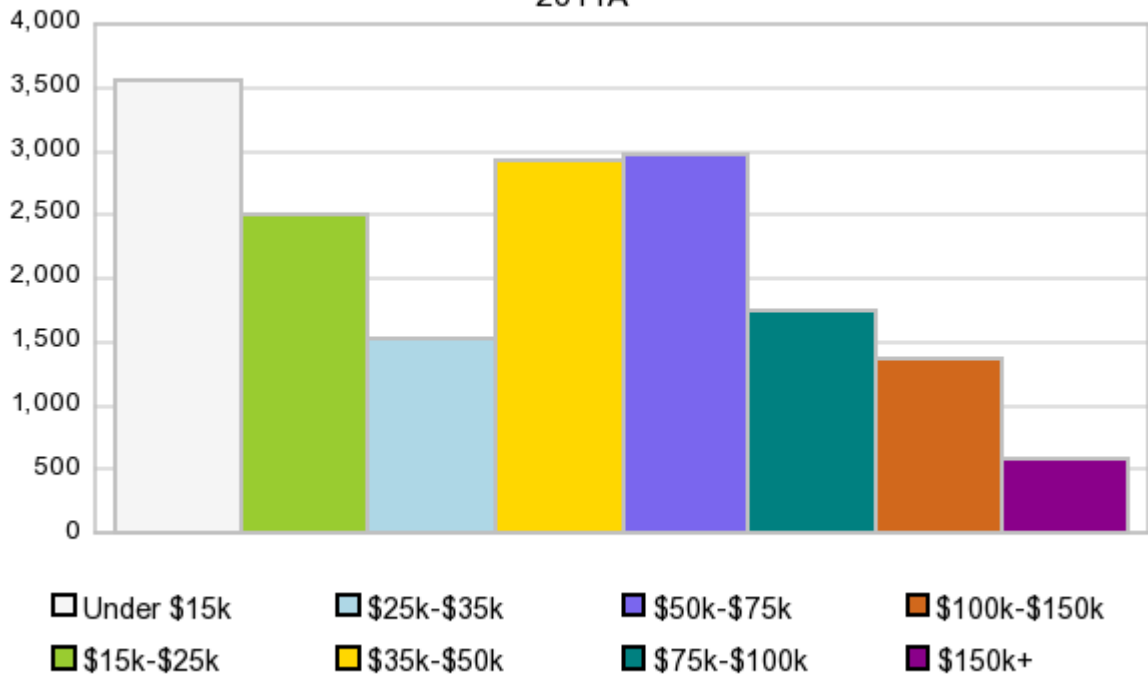
In 2011A, the predominant race/ethnicity category in this study area is **White**. The race & ethnicity category least represented in this geography is **American Indian, Alaska Native**.

A: White
 B: Asian Pac Islr
 C: Black
 D: Hispanic
 E: Amer Indian or Alaska Native
 F: Other or Multi Race

Race & Ethnicity	2000		2010		2011A		2016		Percent Change	
	Census	%	Census	%	Estimate	%	Projection	%	2000 to 2010	2011 to 2016
White	24,215	54.2%	25,121	54.9%	24,865	54.7%	23,861	53.8%	3.7%	-4.0%
Black	19,392	43.4%	18,965	41.5%	18,968	41.7%	18,913	42.6%	-2.2%	-0.3%
American Indian or Alaska Native	96	0.2%	98	0.2%	98	0.2%	95	0.2%	2.1%	-3.1%
Asian/Hawaiian/PI	453	1.0%	601	1.3%	602	1.3%	602	1.4%	32.7%	0.0%
Some Other Race	213	0.5%	379	0.8%	330	0.7%	327	0.7%	77.9%	-0.9%
Two or More Races	331	0.7%	556	1.2%	603	1.3%	597	1.3%	68.0%	-1.0%
Hispanic Ethnicity	607	1.4%	919	2.0%	1,026	2.3%	1,448	3.3%	51.4%	41.1%
Not Hispanic or Latino	44,093	98.6%	44,801	98.0%	44,440	97.7%	42,947	96.7%	1.6%	-3.4%

Households by Income

Households by Income Group 2011A



In 2011A the predominant household income category in this study area is **\$0 - \$15K**, and the income group that is least represented in this geography is **\$150K +**.

HH Income Categories*

HH Income Categories*	1990 Census		2000 Census		2011A Estimate		2016 Projection		Percent Change	
	Count	%	Count	%	Count	%	Count	%	1990 to 2000	2011 to 2016
\$0 - \$15,000	3,574	29.4%	3,052	20.7%	3,555	20.7%	3,745	20.1%	-14.6%	5.3%
\$15,000 - \$24,999	2,345	19.3%	2,144	14.5%	2,509	14.6%	2,808	15.1%	-8.6%	11.9%
\$25,000 - \$34,999	1,959	16.1%	2,150	14.6%	1,524	8.9%	1,369	7.3%	9.8%	-10.2%
\$35,000 - \$49,999	2,109	17.3%	2,551	17.3%	2,915	17.0%	3,167	17.0%	21.0%	8.6%
\$50,000 - \$74,999	1,459	12.0%	2,493	16.9%	2,983	17.4%	3,235	17.4%	70.9%	8.4%
\$75,000 - \$99,999	404	3.3%	1,267	8.6%	1,733	10.1%	1,939	10.4%	213.6%	11.9%
\$100,000 - \$149,999	202	1.7%	681	4.6%	1,356	7.9%	1,691	9.1%	237.1%	24.7%
\$150,000 +	109	0.9%	420	2.8%	584	3.4%	682	3.7%	285.3%	16.8%
Average Hhld Income	\$32,132		\$47,028		\$50,932		\$52,373		46.4%	2.8%
Median Hhld Income	\$25,733		\$35,172		\$38,589		\$39,366		36.7%	2.0%
Per Capita Income	\$10,448		\$15,527		\$22,502		\$25,886		48.6%	15.0%

*This Census 2010 data has not yet been released

Current year data is for the year **2011**, 5 year projected data is for the year **2016**. More About Our Data.
Demographic data ' 2011 by Experian/Applied Geographic Solutions.

Business List data ' 2011 by D&B^{fi}. All rights reserved. All D&B information is powered by DUNSRight™, D&B's Quality Process.

' 2011. DDR is brought to you by Alteryx, Inc.

Alteryx, DemographicsNow.com and the Alteryx and DemographicsNow.com logos are trademarks of Alteryx, Inc. All rights reserved.

Privacy Statement | License Agreement