



Date: 04/23/12

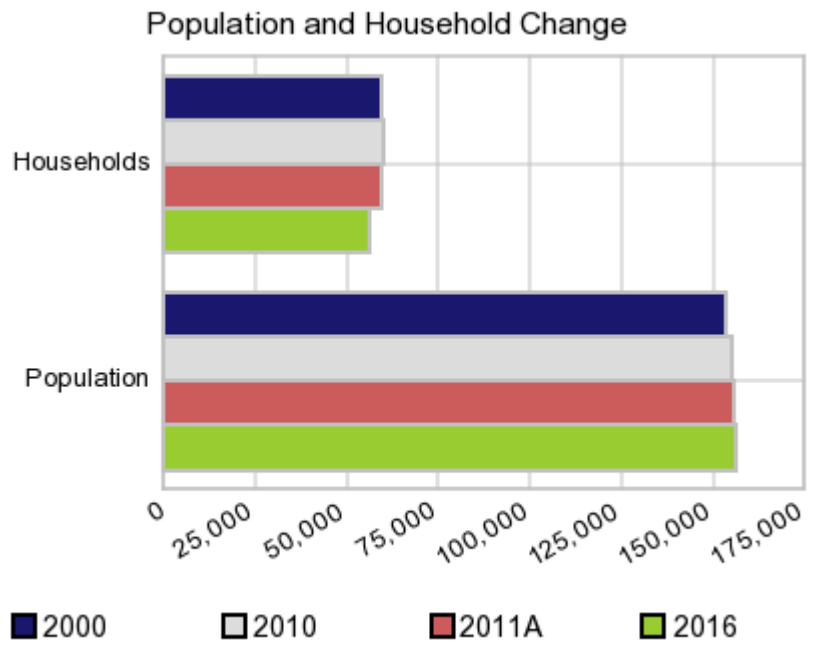
Current Geography Selection: (1 Selected) Counties: Bibb County

Executive Summary Report with Charts

Population Demographics:

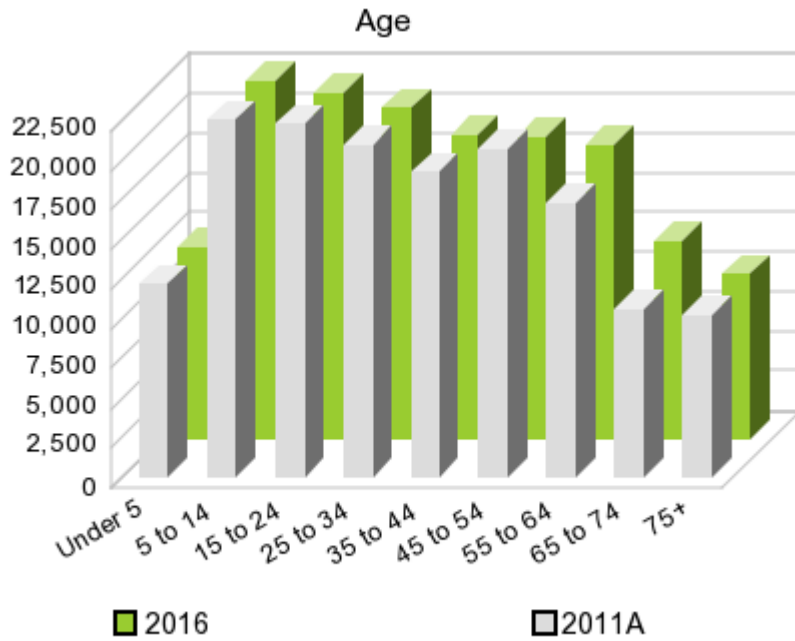
The number of households in the study area in 2000 was **59,667** and changed to **60,295** in 2010, representing a change of **1.1%**. The household count in 2011A was **59,554** and the household projection for 2016 is **56,640**, a change of **-4.9%**.

The population in the study area in 2000 was **153,887** and in 2010 it was **155,547**, roughly a **1.1%** change. The population in 2011A was **155,744** and the projection for 2016 is **156,214** representing a change of **0.3%**.



	2000 Census	2010 Census	2011A Estimate	2016 Projection	Percent Change	
					2000 to 2010	2011 to 2016
Total Population	153,887	155,547	155,744	156,214	1.1%	0.3%
Total Households	59,667	60,295	59,554	56,640	7.1%	-4.9%

Population by Age



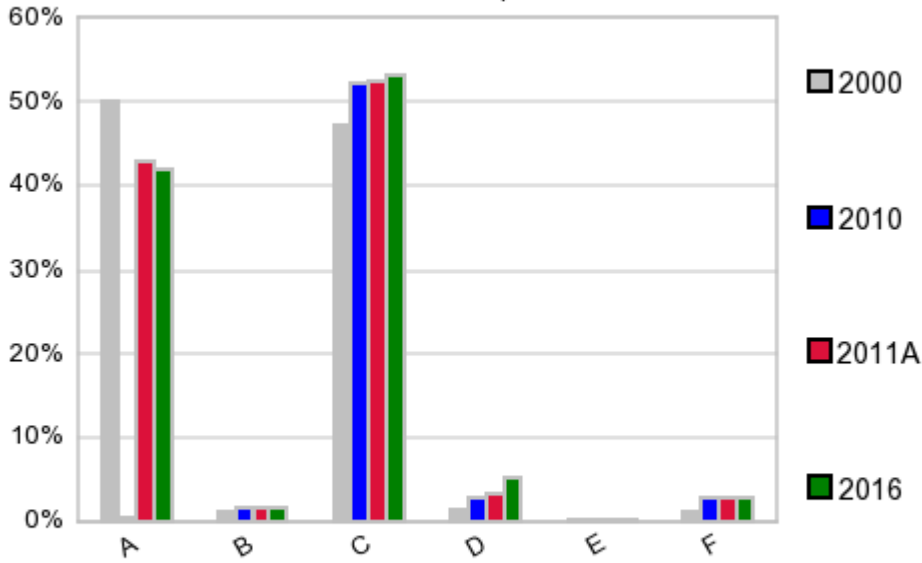
In 1990, the median age of the total population in the study area was **33**, and in 2000, it was **35**. The median age in 2011A is **35** and it is predicted to change in five years to **36** years. In 2011A, females represented **54.2%** of the population with a median age of **36** and males represented **45.8%** of the population with a median age of **33** years. In 2011A, the most prominent age group in this geography is **Age 5 to 14** years. The age group least represented in this geography is **75 +** years.

Age Groups*

	1990 Census		2000 Census		2011A Estimate		2016 Projection		Percent Change	
		%		%		%		%	1990 to 2000	2011 to 2016
0 to 4	11,341	7.6%	11,434	7.4%	12,114	7.8%	12,042	7.7%	0.8%	-0.6%
5 to 14	21,844	14.6%	23,060	15.0%	22,482	14.4%	22,458	14.4%	5.6%	-0.1%
15 to 19	11,708	7.8%	11,258	7.3%	11,415	7.3%	10,754	6.9%	-3.8%	-5.8%
20 to 24	11,226	7.5%	10,626	6.9%	10,817	6.9%	10,962	7.0%	-5.3%	1.3%
25 to 34	25,044	16.7%	21,301	13.8%	20,959	13.5%	20,834	13.3%	-14.9%	-0.6%
35 to 44	21,950	14.6%	23,257	15.1%	19,226	12.3%	19,114	12.2%	6.0%	-0.6%
45 to 54	14,542	9.7%	20,419	13.3%	20,632	13.2%	18,915	12.1%	40.4%	-8.3%
55 to 64	12,996	8.7%	12,912	8.4%	17,234	11.1%	18,430	11.8%	-0.6%	6.9%
65 to 74	11,406	7.6%	10,224	6.6%	10,563	6.8%	12,368	7.9%	-10.4%	17.1%
75 +	7,918	5.3%	9,396	6.1%	10,276	6.6%	10,291	6.6%	18.7%	0.1%

Population by Race/Ethnicity

Race and Ethnicity Percent Composition



In 2011A, the predominant race/ethnicity category in this study area is **Black**. The race & ethnicity category least represented in this geography is **American Indian, Alaska Native**.

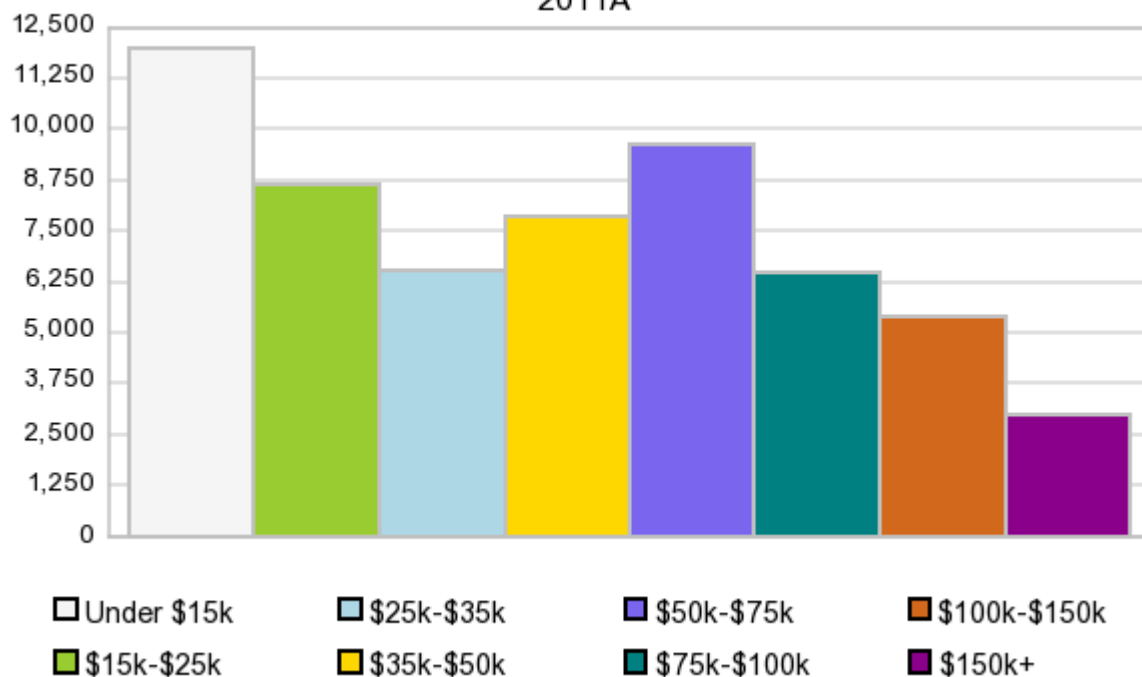
A: White
 B: Asian Pac Islr
 C: Black
 D: Hispanic
 E: Amer Indian or Alaska Native
 F: Other or Multi Race

Race & Ethnicity	2000 Census		2010 Census		2011A Estimate		2016 Projection		Percent Change	
	Count	%	Count	%	Count	%	Count	%	2000 to 2010	2011 to 2016
White	77,147	50.1%	67,199	43.2%	66,902	43.0%	65,672	42.0%	-12.9%	-1.8%
Black	72,818	47.3%	81,116	52.1%	81,595	52.4%	83,267	53.3%	11.4%	2.1%
American Indian or Alaska Native	272	0.2%	332	0.2%	331	0.2%	330	0.2%	22.1%	-0.3%
Asian/Hawaiian/PI	1,694	1.1%	2,651	1.7%	2,664	1.7%	2,700	1.7%	56.5%	1.4%
Some Other Race	714	0.5%	2,014	1.3%	1,410	0.9%	1,403	0.9%	182.1%	-0.5%
Two or More Races	1,242	0.8%	2,235	1.4%	2,840	1.8%	2,847	1.8%	80.0%	0.2%
Hispanic Ethnicity	2,023	1.3%	4,389	2.8%	5,118	3.3%	8,002	5.1%	117.0%	56.4%
Not Hispanic or Latino	151,864	98.7%	151,158	97.2%	150,626	96.7%	148,215	94.9%	-0.5%	-1.6%

Households by Income

Households by Income Group 2011A

In 2011A the predominant household income category in this study area is \$0 - \$15K, and the income group that is least represented in this geography is \$150K +.



HH Income Categories*

HH Income Categories*	1990 Census		2000 Census		2011A Estimate		2016 Projection		Percent Change	
	Count	%	Count	%	Count	%	Count	%	1990 to 2000	2011 to 2016
\$0 - \$15,000	17,837	31.7%	14,062	23.6%	11,993	20.1%	10,762	19.0%	-21.2%	-10.3%
\$15,000 - \$24,999	9,473	16.8%	8,366	14.0%	8,613	14.5%	8,399	14.8%	-11.7%	-2.5%
\$25,000 - \$34,999	8,317	14.8%	7,700	12.9%	6,537	11.0%	5,785	10.2%	-7.4%	-11.5%
\$35,000 - \$49,999	8,847	15.7%	9,126	15.3%	7,875	13.2%	7,060	12.5%	3.2%	-10.4%
\$50,000 - \$74,999	7,645	13.6%	10,100	16.9%	9,622	16.2%	8,883	15.7%	32.1%	-7.7%
\$75,000 - \$99,999	2,203	3.9%	5,042	8.5%	6,477	10.9%	6,677	11.8%	128.9%	3.1%
\$100,000 - \$149,999	1,178	2.1%	3,387	5.7%	5,411	9.1%	5,855	10.3%	187.5%	8.2%
\$150,000 +	748	1.3%	1,884	3.2%	3,021	5.1%	3,204	5.7%	151.9%	6.1%
Average Hhld Income	\$34,346		\$48,483		\$55,406		\$59,139		41.2%	6.7%
Median Hhld Income	\$25,872		\$34,585		\$39,773		\$41,726		33.7%	4.9%
Per Capita Income	\$13,011		\$18,798		\$22,730		\$23,229		44.5%	2.2%

*This Census 2010 data has not yet been released

Current year data is for the year 2011, 5 year projected data is for the year 2016. More About Our Data.
Demographic data ' 2011 by Experian/Applied Geographic Solutions.

Business List data ' 2011 by D&B^{fi}. All rights reserved. All D&B information is powered by DUNSRight™, D&B's Quality Process.

' 2011. DDR is brought to you by Alteryx, Inc.

Alteryx, DemographicsNow.com and the Alteryx and DemographicsNow.com logos are trademarks of Alteryx, Inc. All rights reserved.

Privacy Statement | License Agreement