



Date: 04/23/12

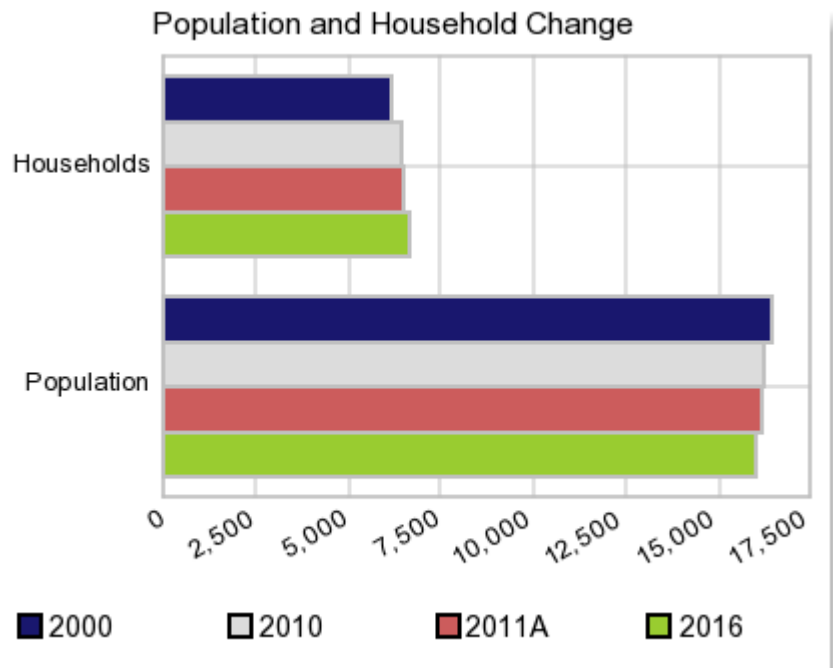
Current Geography Selection: (1 Selected) Counties: Brooks County

Executive Summary Report with Charts

Population Demographics:

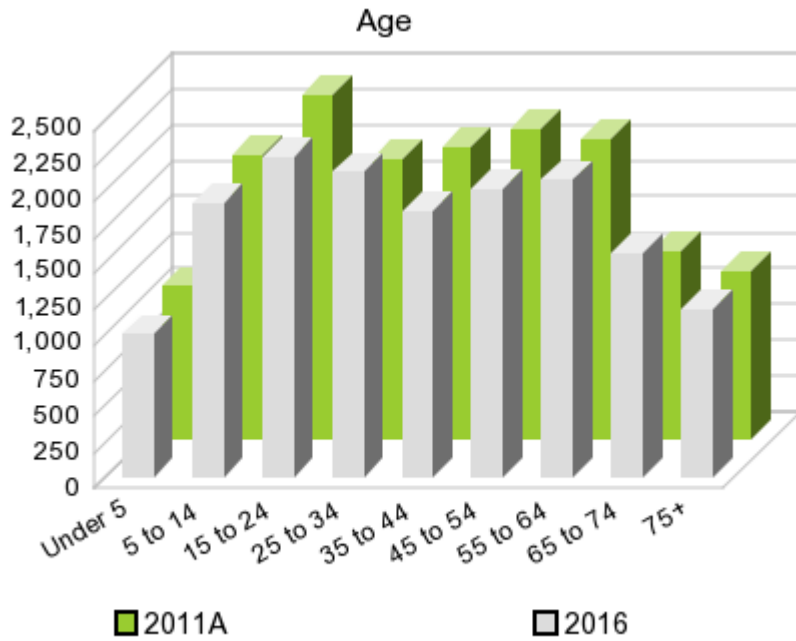
The number of households in the study area in 2000 was **6,155** and changed to **6,457** in 2010, representing a change of **4.9%**. The household count in 2011A was **6,491** and the household projection for 2016 is **6,629**, a change of **2.1%**.

The population in the study area in 2000 was **16,450** and in 2010 it was **16,243**, roughly a **-1.3%** change. The population in 2011A was **16,201** and the projection for 2016 is **16,003** representing a change of **-1.2%**.



	2000 Census	2010 Census	2011A Estimate	2016 Projection	Percent Change	
					2000 to 2010	2011 to 2016
Total Population	16,450	16,243	16,201	16,003	-1.3%	-1.2%
Total Households	6,155	6,457	6,491	6,629	19.8%	2.1%

Population by Age



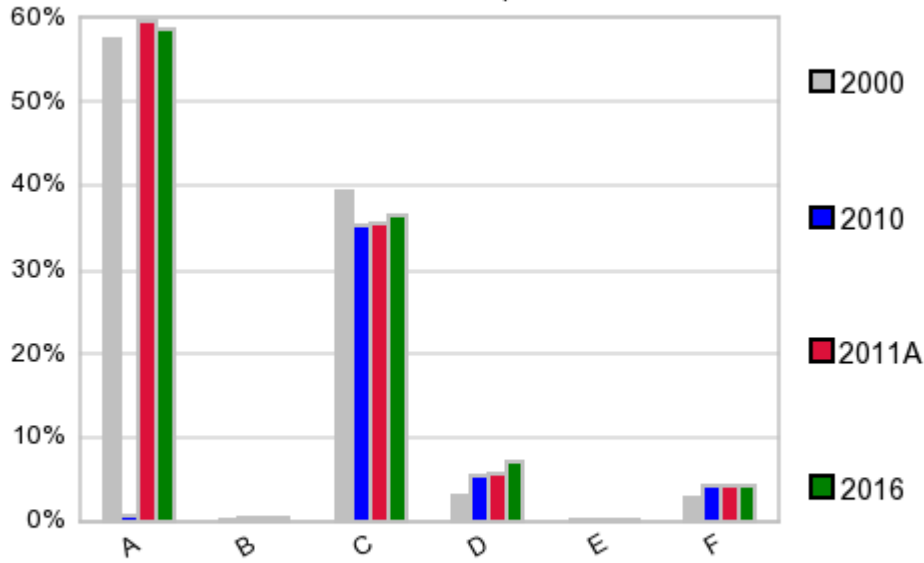
In 1990, the median age of the total population in the study area was **32**, and in 2000, it was **36**. The median age in 2011A is **38** and it is predicted to change in five years to **39** years. In 2011A, females represented **52.4%** of the population with a median age of **41** and males represented **47.6%** of the population with a median age of **37** years. In 2011A, the most prominent age group in this geography is **Age 45 to 54** years. The age group least represented in this geography is **0 to 4** years.

Age Groups*

	1990 Census		2000 Census		2011A Estimate		2016 Projection		Percent Change	
		%		%		%		%	1990 to 2000	2011 to 2016
0 to 4	1,286	8.4%	1,076	6.5%	1,072	6.6%	1,002	6.3%	-16.3%	-6.5%
5 to 14	2,545	16.5%	2,537	15.4%	1,984	12.2%	1,922	12.0%	-0.3%	-3.1%
15 to 19	1,256	8.2%	1,296	7.9%	1,246	7.7%	1,038	6.5%	3.2%	-16.7%
20 to 24	1,039	6.7%	973	5.9%	1,154	7.1%	1,206	7.5%	-6.4%	4.5%
25 to 34	2,218	14.4%	2,075	12.6%	1,954	12.1%	2,136	13.3%	-6.4%	9.3%
35 to 44	1,937	12.6%	2,353	14.3%	2,046	12.6%	1,864	11.6%	21.5%	-8.9%
45 to 54	1,430	9.3%	2,093	12.7%	2,158	13.3%	2,017	12.6%	46.4%	-6.5%
55 to 64	1,355	8.8%	1,582	9.6%	2,091	12.9%	2,076	13.0%	16.8%	-0.7%
65 to 74	1,246	8.1%	1,222	7.4%	1,312	8.1%	1,565	9.8%	-1.9%	19.3%
75 +	1,086	7.1%	1,243	7.6%	1,180	7.3%	1,173	7.3%	14.5%	-0.6%

Population by Race/Ethnicity

Race and Ethnicity Percent Composition



In 2011A, the predominant race/ethnicity category in this study area is **White**. The race & ethnicity category least represented in this geography is **American Indian, Alaska Native**.

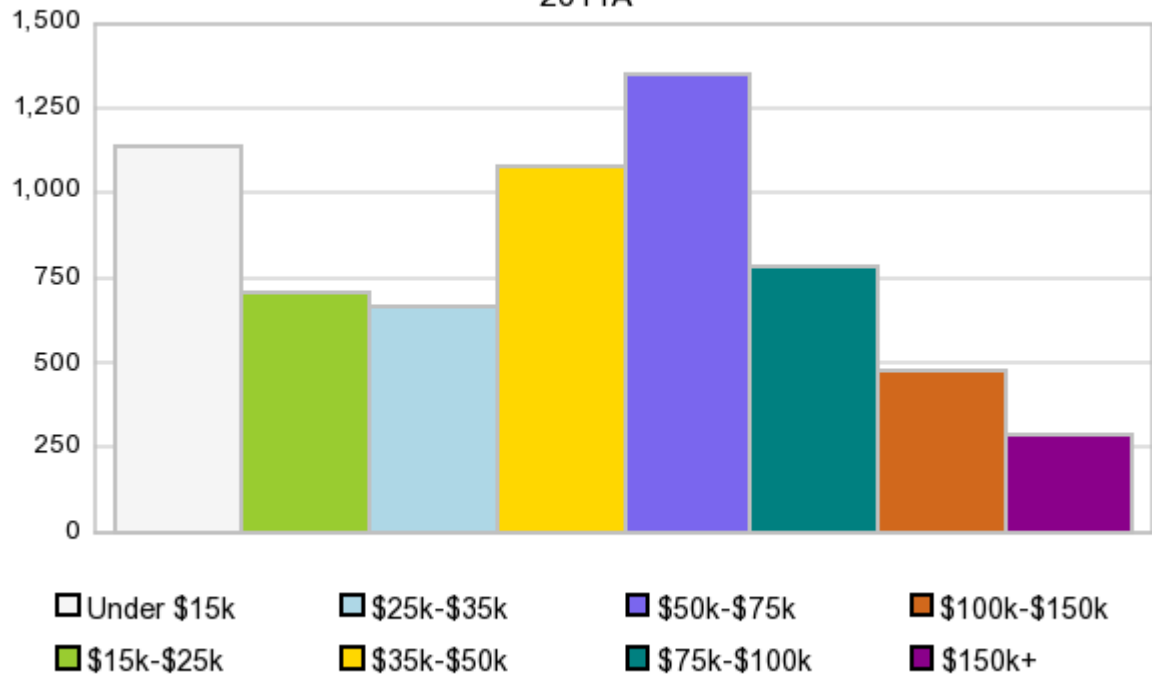
A: White
 B: Asian Pac Islr
 C: Black
 D: Hispanic
 E: Amer Indian or Alaska Native
 F: Other or Multi Race

Race & Ethnicity	2000		2010		2011A		2016		Percent Change	
	Census	%	Census	%	Estimate	%	Projection	%	2000 to 2010	2011 to 2016
White	9,436	57.4%	9,722	59.9%	9,655	59.6%	9,390	58.7%	3.0%	-2.7%
Black	6,472	39.3%	5,729	35.3%	5,752	35.5%	5,820	36.4%	-11.5%	1.2%
American Indian or Alaska Native	50	0.3%	49	0.3%	49	0.3%	49	0.3%	-2.0%	0.0%
Asian/Hawaiian/PI	47	0.3%	65	0.4%	66	0.4%	72	0.5%	38.3%	9.1%
Some Other Race	290	1.8%	477	2.9%	421	2.6%	417	2.6%	64.5%	-1.0%
Two or More Races	155	0.9%	201	1.2%	257	1.6%	255	1.6%	29.7%	-0.8%
Hispanic Ethnicity	505	3.1%	853	5.3%	910	5.6%	1,136	7.1%	68.9%	24.8%
Not Hispanic or Latino	15,945	96.9%	15,390	94.7%	15,291	94.4%	14,868	92.9%	-3.5%	-2.8%

Households by Income

Households by Income Group 2011A

In 2011A the predominant household income category in this study area is **\$50K - \$75K**, and the income group that is least represented in this geography is **\$150K +**.



HH Income Categories*

	1990 Census		2000 Census		2011A Estimate		2016 Projection		Percent Change	
		%		%		%		%	1990 to 2000	2011 to 2016
\$0 - \$15,000	2,102	39.0%	1,739	28.3%	1,141	17.6%	915	13.8%	-17.3%	-19.8%
\$15,000 - \$24,999	1,137	21.1%	1,138	18.5%	707	10.9%	571	8.6%	0.1%	-19.2%
\$25,000 - \$34,999	952	17.7%	920	14.9%	665	10.2%	558	8.4%	-3.4%	-16.1%
\$35,000 - \$49,999	774	14.4%	1,002	16.3%	1,075	16.6%	1,087	16.4%	29.5%	1.1%
\$50,000 - \$74,999	333	6.2%	849	13.8%	1,350	20.8%	1,576	23.8%	155.0%	16.7%
\$75,000 - \$99,999	39	0.7%	279	4.5%	786	12.1%	1,004	15.2%	615.4%	27.7%
\$100,000 - \$149,999	27	0.5%	144	2.3%	478	7.4%	572	8.6%	433.3%	19.7%
\$150,000 +	22	0.4%	84	1.4%	289	4.5%	347	5.2%	281.8%	20.1%
Average Hhld Income	\$24,135		\$36,875		\$59,739		\$70,628		52.8%	18.2%
Median Hhld Income	\$19,550		\$26,988		\$44,464		\$52,238		38.0%	17.5%
Per Capita Income	\$8,534		\$13,797		\$23,935		\$29,257		61.7%	22.2%

*This Census 2010 data has not yet been released

Current year data is for the year **2011**, 5 year projected data is for the year **2016**. More About Our Data.
Demographic data ' 2011 by Experian/Applied Geographic Solutions.

Business List data ' 2011 by D&B^{fi}. All rights reserved. All D&B information is powered by DUNSRight™, D&B's Quality Process.

' 2011. DDR is brought to you by Alteryx, Inc.

Alteryx, DemographicsNow.com and the Alteryx and DemographicsNow.com logos are trademarks of Alteryx, Inc. All rights reserved.

Privacy Statement | License Agreement