



Date: 04/23/12

Current Geography Selection: (1 Selected) Counties: Clarke County

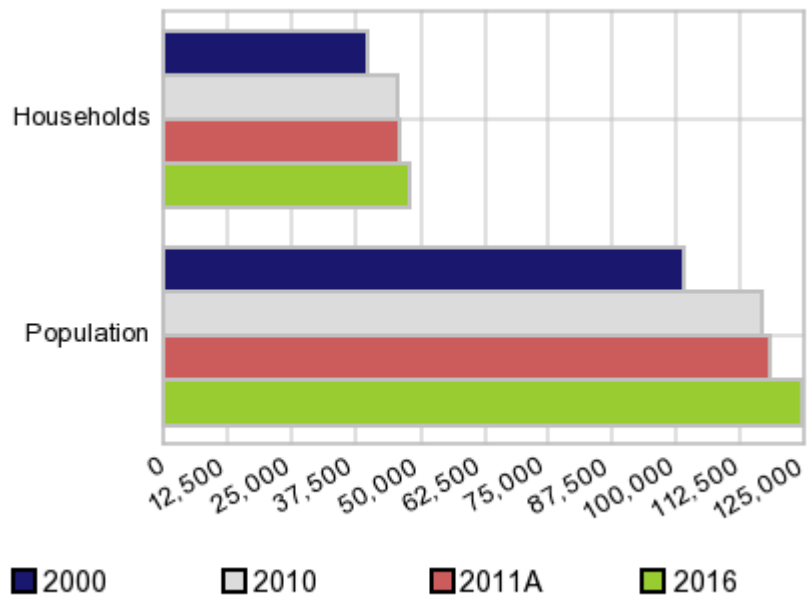
Executive Summary Report with Charts

Population Demographics:

The number of households in the study area in 2000 was **39,706** and changed to **45,414** in 2010, representing a change of **14.4%**. The household count in 2011A was **45,894** and the household projection for 2016 is **47,801**, a change of **4.2%**.

The population in the study area in 2000 was **101,489** and in 2010 it was **116,714**, roughly a **15.0%** change. The population in 2011A was **118,306** and the projection for 2016 is **124,475** representing a change of **5.2%**.

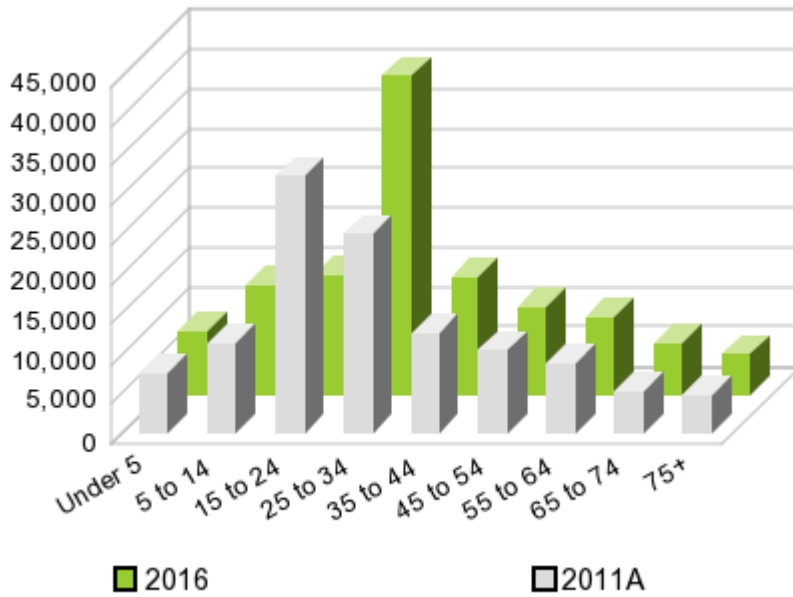
Population and Household Change



	2000 Census	2010 Census	2011A Estimate	2016 Projection	Percent Change	
					2000 to 2010	2011 to 2016
Total Population	101,489	116,714	118,306	124,475	15.0%	5.2%
Total Households	39,706	45,414	45,894	47,801	36.9%	4.2%

Population by Age

Age



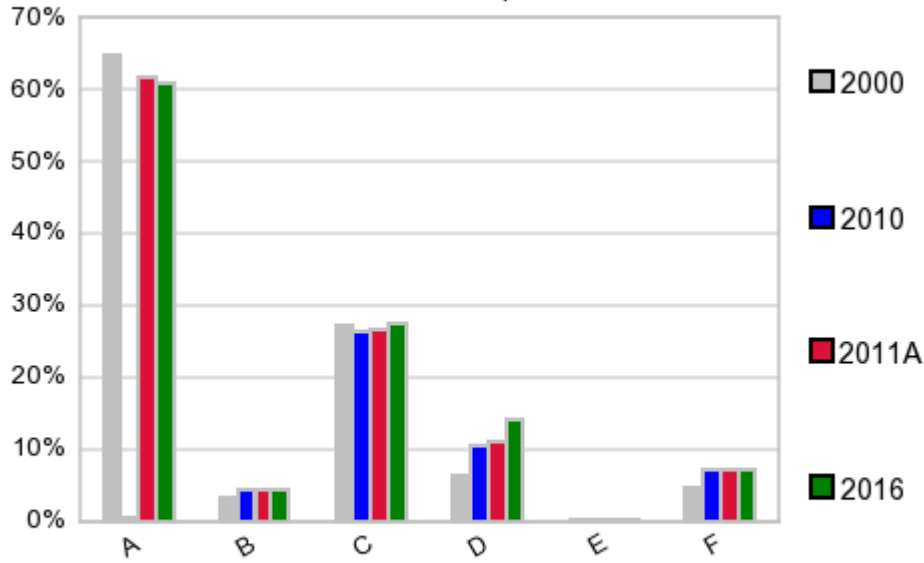
In 1990, the median age of the total population in the study area was **25**, and in 2000, it was **25**. The median age in 2011A is **27** and it is predicted to change in five years to **31** years. In 2011A, females represented **51.7%** of the population with a median age of **27** and males represented **48.3%** of the population with a median age of **27** years. In 2011A, the most prominent age group in this geography is **Age 25 to 34** years. The age group least represented in this geography is **75 +** years.

Age Groups*

	1990		2000		2011A		2016		Percent Change	
	Census	%	Census	%	Estimate	%	Projection	%	1990 to 2000	2011 to 2016
0 to 4	5,283	6.0%	5,287	5.2%	7,559	6.4%	8,079	6.5%	0.1%	6.9%
5 to 14	9,574	10.9%	9,874	9.7%	11,422	9.7%	13,925	11.2%	3.1%	21.9%
15 to 19	9,708	11.1%	11,298	11.1%	9,749	8.2%	5,279	4.2%	16.4%	-45.9%
20 to 24	18,318	20.9%	23,389	23.0%	22,485	19.0%	9,725	7.8%	27.7%	-56.7%
25 to 34	14,877	17.0%	16,626	16.4%	25,024	21.2%	40,062	32.2%	11.8%	60.1%
35 to 44	10,769	12.3%	11,182	11.0%	12,571	10.6%	14,865	11.9%	3.8%	18.2%
45 to 54	6,526	7.5%	9,683	9.5%	10,369	8.8%	10,968	8.8%	48.4%	5.8%
55 to 64	4,995	5.7%	5,942	5.9%	8,833	7.5%	9,778	7.9%	19.0%	10.7%
65 to 74	4,283	4.9%	4,210	4.1%	5,370	4.5%	6,648	5.3%	-1.7%	23.8%
75 +	3,268	3.7%	3,998	3.9%	4,906	4.1%	5,080	4.1%	22.3%	3.5%

Population by Race/Ethnicity

Race and Ethnicity Percent Composition



In 2011A, the predominant race/ethnicity category in this study area is **White**. The race & ethnicity category least represented in this geography is **American Indian, Alaska Native**.

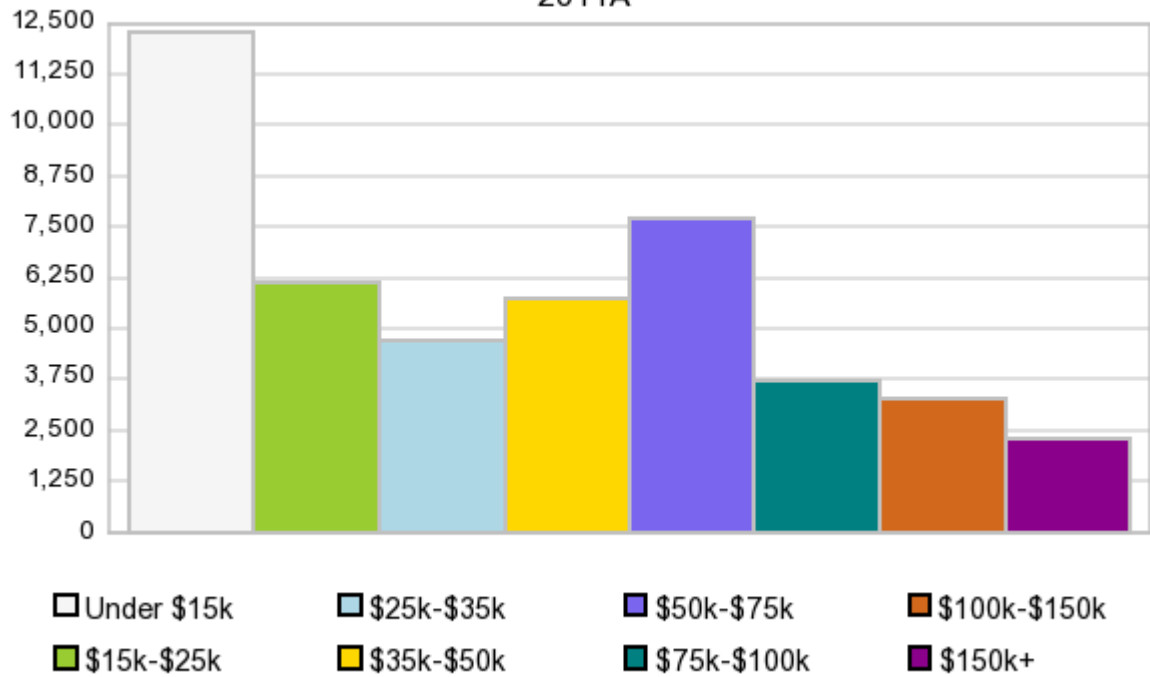
A: White
 B: Asian Pac Islr
 C: Black
 D: Hispanic
 E: Amer Indian or Alaska Native
 F: Other or Multi Race

Race & Ethnicity	2000		2010		2011A		2016		Percent Change	
	Census	%	Census	%	Estimate	%	Projection	%	2000 to 2010	2011 to 2016
White	65,852	64.9%	72,238	61.9%	72,946	61.7%	75,679	60.8%	9.7%	3.7%
Black	27,656	27.3%	30,988	26.6%	31,663	26.8%	34,299	27.6%	12.0%	8.3%
American Indian or Alaska Native	214	0.2%	247	0.2%	251	0.2%	266	0.2%	15.4%	6.0%
Asian/Hawaiian/PI	3,218	3.2%	4,953	4.2%	5,042	4.3%	5,389	4.3%	53.9%	6.9%
Some Other Race	3,123	3.1%	5,763	4.9%	5,501	4.7%	5,741	4.6%	84.5%	4.4%
Two or More Races	1,426	1.4%	2,525	2.2%	2,900	2.5%	3,102	2.5%	77.1%	7.0%
Hispanic Ethnicity	6,436	6.3%	12,192	10.4%	13,250	11.2%	17,426	14.0%	89.4%	31.5%
Not Hispanic or Latino	95,053	93.7%	104,522	89.6%	105,056	88.8%	107,047	86.0%	10.0%	1.9%

Households by Income

Households by Income Group 2011A

In 2011A the predominant household income category in this study area is \$0 - \$15K, and the income group that is least represented in this geography is \$150K +.



HH Income Categories*

HH Income Categories*	1990 Census		2000 Census		2011A Estimate		2016 Projection		Percent Change	
	Count	%	Count	%	Count	%	Count	%	1990 to 2000	2011 to 2016
\$0 - \$15,000	12,925	39.0%	11,868	29.9%	12,256	26.7%	12,273	25.7%	-8.2%	0.1%
\$15,000 - \$24,999	6,152	18.5%	6,119	15.4%	6,176	13.5%	6,062	12.7%	-0.5%	-1.8%
\$25,000 - \$34,999	4,366	13.2%	4,947	12.5%	4,735	10.3%	4,514	9.4%	13.3%	-4.7%
\$35,000 - \$49,999	4,131	12.5%	5,775	14.5%	5,711	12.4%	5,531	11.6%	39.8%	-3.2%
\$50,000 - \$74,999	3,239	9.8%	5,470	13.8%	7,684	16.7%	8,528	17.8%	68.9%	11.0%
\$75,000 - \$99,999	1,220	3.7%	2,251	5.7%	3,736	8.1%	4,379	9.2%	84.5%	17.2%
\$100,000 - \$149,999	794	2.4%	2,127	5.4%	3,291	7.2%	3,744	7.8%	167.9%	13.8%
\$150,000 +	326	1.0%	1,149	2.9%	2,310	5.0%	2,766	5.8%	252.5%	19.7%
Average Hhld Income	\$29,799		\$42,325		\$52,415		\$58,722		42.0%	12.0%
Median Hhld Income	\$20,804		\$28,585		\$34,518		\$37,828		37.4%	9.6%
Per Capita Income	\$11,575		\$16,559		\$23,202		\$25,717		43.1%	10.8%

*This Census 2010 data has not yet been released

Current year data is for the year **2011**, 5 year projected data is for the year **2016**. More About Our Data.
Demographic data ' 2011 by Experian/Applied Geographic Solutions.

Business List data ' 2011 by D&B^{fi}. All rights reserved. All D&B information is powered by DUNSRight™, D&B's Quality Process.

' 2011. DDR is brought to you by Alteryx, Inc.

Alteryx, DemographicsNow.com and the Alteryx and DemographicsNow.com logos are trademarks of Alteryx, Inc. All rights reserved.

Privacy Statement | License Agreement