



Date: 04/23/12

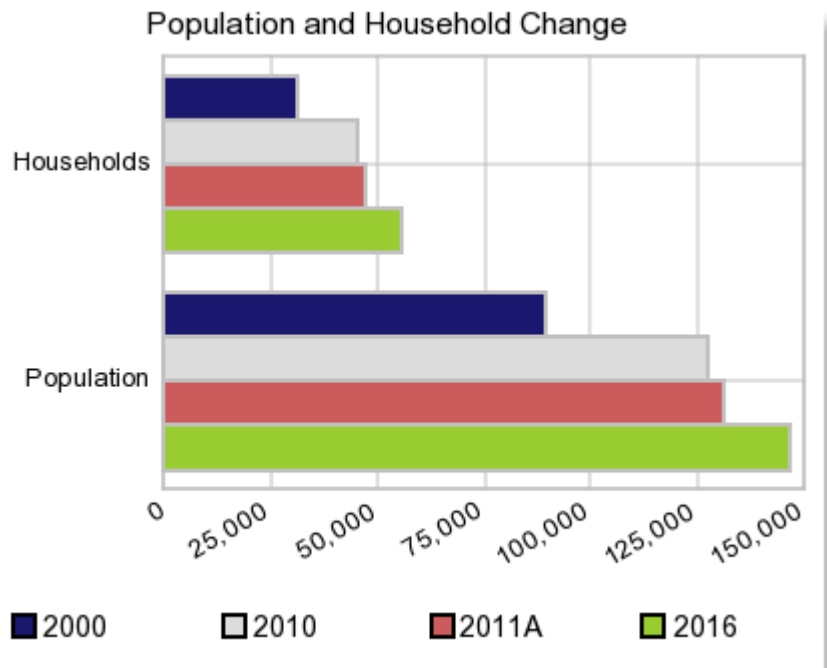
Current Geography Selection: (1 Selected) Counties: Coweta County

Executive Summary Report with Charts

Population Demographics:

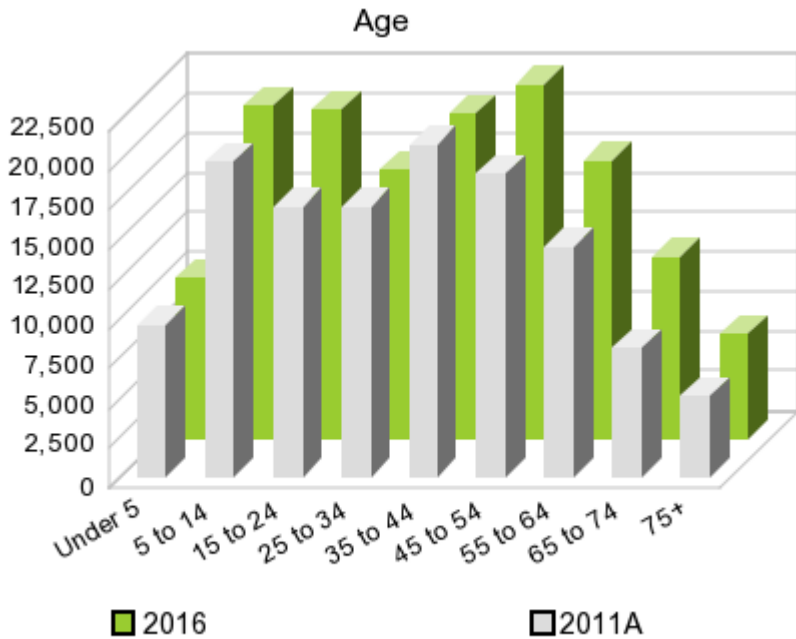
The number of households in the study area in 2000 was **31,442** and changed to **45,673** in 2010, representing a change of **45.3%**. The household count in 2011A was **47,630** and the household projection for 2016 is **55,467**, a change of **16.5%**.

The population in the study area in 2000 was **89,215** and in 2010 it was **127,317**, roughly a **42.7%** change. The population in 2011A was **131,264** and the projection for 2016 is **146,764** representing a change of **11.8%**.



	2000 Census	2010 Census	2011A Estimate	2016 Projection	Percent Change	
					2000 to 2010	2011 to 2016
Total Population	89,215	127,317	131,264	146,764	42.7%	11.8%
Total Households	31,442	45,673	47,630	55,467	141.3%	16.5%

Population by Age



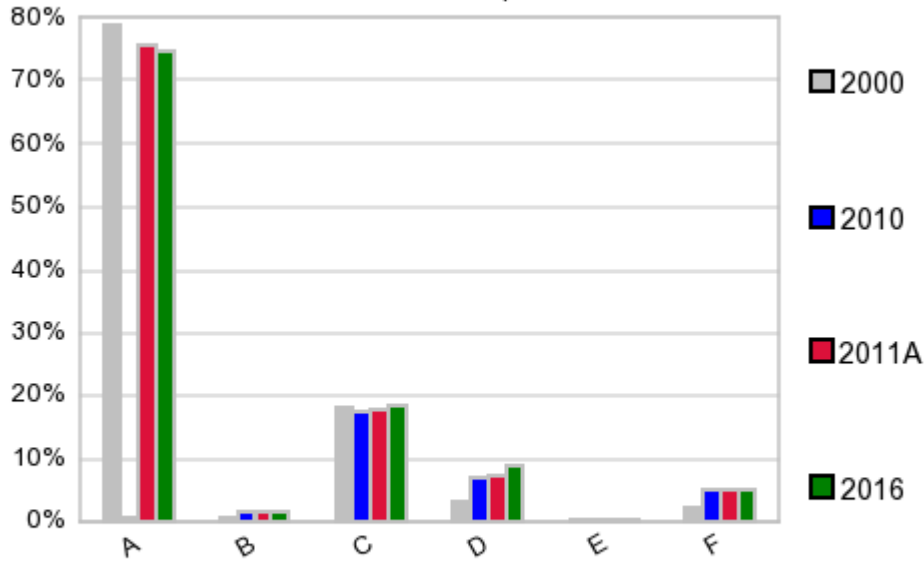
In 1990, the median age of the total population in the study area was **32**, and in 2000, it was **34**. The median age in 2011A is **36** and it is predicted to change in five years to **38** years. In 2011A, females represented **50.4%** of the population with a median age of **37** and males represented **49.6%** of the population with a median age of **35** years. In 2011A, the most prominent age group in this geography is **Age 35 to 44** years. The age group least represented in this geography is **75 +** years.

Age Groups*

	1990 Census		2000 Census		2011A Estimate		2016 Projection		Percent Change	
		%		%		%		%	1990 to 2000	2011 to 2016
0 to 4	4,519	8.4%	7,288	8.2%	9,644	7.4%	10,064	6.9%	61.3%	4.4%
5 to 14	8,371	15.5%	14,565	16.3%	19,855	15.1%	20,860	14.2%	74.0%	5.1%
15 to 19	3,997	7.4%	5,833	6.5%	9,265	7.1%	10,745	7.3%	45.9%	16.0%
20 to 24	3,699	6.9%	4,737	5.3%	7,716	5.9%	9,883	6.7%	28.1%	28.1%
25 to 34	9,123	16.9%	14,474	16.2%	16,983	12.9%	16,914	11.5%	58.7%	-0.4%
35 to 44	8,370	15.5%	15,309	17.2%	20,930	15.9%	20,459	13.9%	82.9%	-2.3%
45 to 54	6,004	11.1%	11,958	13.4%	19,128	14.6%	22,305	15.2%	99.2%	16.6%
55 to 64	4,326	8.0%	7,480	8.4%	14,426	11.0%	17,518	11.9%	72.9%	21.4%
65 to 74	3,186	5.9%	4,356	4.9%	8,201	6.2%	11,383	7.8%	36.7%	38.8%
75 +	2,258	4.2%	3,215	3.6%	5,117	3.9%	6,623	4.5%	42.4%	29.4%

Population by Race/Ethnicity

Race and Ethnicity Percent Composition



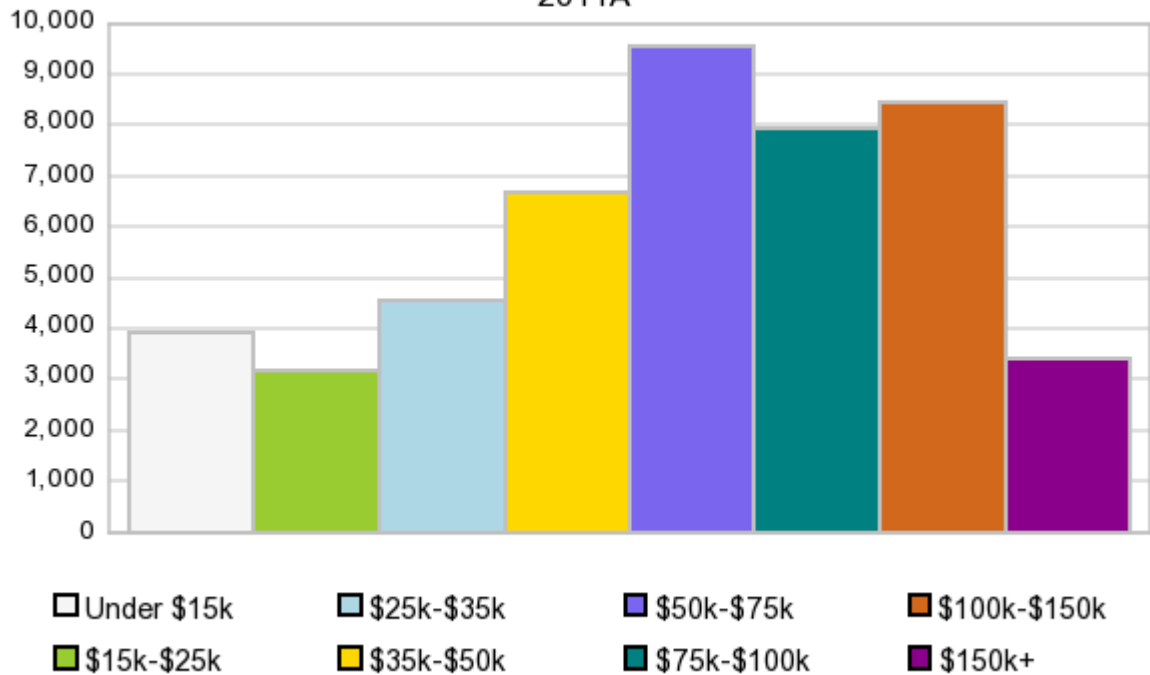
In 2011A, the predominant race/ethnicity category in this study area is **White**. The race & ethnicity category least represented in this geography is **American Indian, Alaska Native**.

A: White
 B: Asian Pac Islr
 C: Black
 D: Hispanic
 E: Amer Indian or Alaska Native
 F: Other or Multi Race

Race & Ethnicity	2000		2010		2011A		2016		Percent Change	
	Census	%	Census	%	Estimate	%	Projection	%	2000 to 2010	2011 to 2016
White	70,353	78.9%	96,594	75.9%	99,258	75.6%	109,629	74.7%	37.3%	10.4%
Black	16,032	18.0%	22,029	17.3%	22,993	17.5%	26,883	18.3%	37.4%	16.9%
American Indian or Alaska Native	208	0.2%	376	0.3%	389	0.3%	433	0.3%	80.8%	11.3%
Asian/Hawaiian/PI	623	0.7%	2,002	1.6%	2,084	1.6%	2,424	1.7%	221.3%	16.3%
Some Other Race	1,089	1.2%	3,676	2.9%	3,230	2.5%	3,619	2.5%	237.6%	12.0%
Two or More Races	910	1.0%	2,640	2.1%	3,305	2.5%	3,766	2.6%	190.1%	13.9%
Hispanic Ethnicity	2,797	3.1%	8,493	6.7%	9,339	7.1%	12,684	8.6%	203.6%	35.8%
Not Hispanic or Latino	86,418	96.9%	118,824	93.3%	121,919	92.9%	134,078	91.4%	37.5%	10.0%

Households by Income

Households by Income Group 2011A



In 2011A the predominant household income category in this study area is **\$50K - \$75K**, and the income group that is least represented in this geography is **\$15K - \$25K**.

HH Income Categories*

HH Income Categories*	1990 Census		2000 Census		2011A Estimate		2016 Projection		Percent Change	
	Count	%	Count	%	Count	%	Count	%	1990 to 2000	2011 to 2016
\$0 - \$15,000	4,278	22.6%	3,335	10.6%	3,933	8.3%	4,104	7.4%	-22.0%	4.3%
\$15,000 - \$24,999	3,068	16.2%	2,917	9.3%	3,171	6.7%	3,191	5.8%	-4.9%	0.6%
\$25,000 - \$34,999	3,101	16.4%	3,234	10.3%	4,538	9.5%	5,104	9.2%	4.3%	12.5%
\$35,000 - \$49,999	3,556	18.8%	5,074	16.1%	6,669	14.0%	7,233	13.0%	42.7%	8.5%
\$50,000 - \$74,999	3,192	16.9%	7,855	25.0%	9,536	20.0%	10,019	18.1%	146.1%	5.1%
\$75,000 - \$99,999	1,084	5.7%	4,592	14.6%	7,939	16.7%	9,713	17.5%	323.6%	22.3%
\$100,000 - \$149,999	439	2.3%	3,054	9.7%	8,440	17.7%	11,592	20.9%	595.7%	37.3%
\$150,000 +	229	1.2%	1,381	4.4%	3,410	7.2%	4,512	8.1%	503.1%	32.3%
Average Hhld Income	\$38,555		\$61,953		\$73,771		\$82,501		60.7%	11.8%
Median Hhld Income	\$31,840		\$53,219		\$63,658		\$70,250		67.1%	10.4%
Per Capita Income	\$13,587		\$21,834		\$26,984		\$31,380		60.7%	16.3%

*This Census 2010 data has not yet been released

Current year data is for the year **2011**, 5 year projected data is for the year **2016**. More About Our Data.
Demographic data ' 2011 by Experian/Applied Geographic Solutions.

Business List data ' 2011 by D&B^{fi}. All rights reserved. All D&B information is powered by DUNSRight™, D&B's Quality Process.

' 2011. DDR is brought to you by Alteryx, Inc.

Alteryx, DemographicsNow.com and the Alteryx and DemographicsNow.com logos are trademarks of Alteryx, Inc. All rights reserved.

Privacy Statement | License Agreement