



Date: 04/23/12

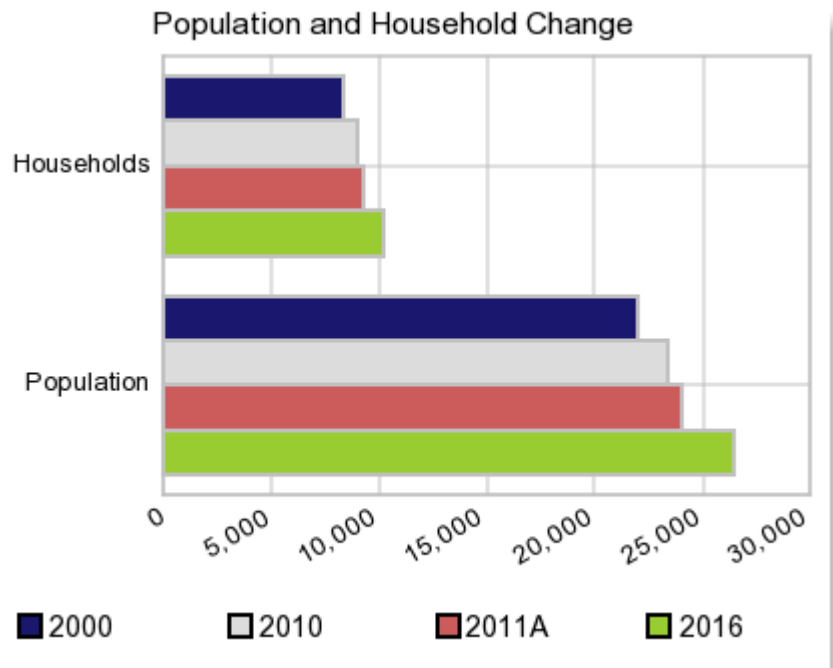
Current Geography Selection: (1 Selected) Counties: Crisp County

## Executive Summary Report with Charts

### Population Demographics:

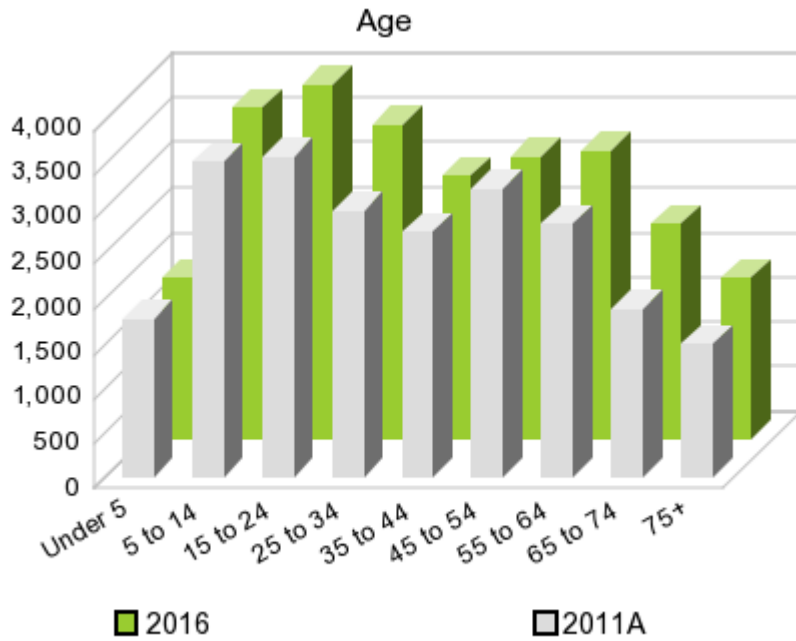
The number of households in the study area in 2000 was **8,337** and changed to **9,079** in 2010, representing a change of **8.9%**. The household count in 2011A was **9,300** and the household projection for 2016 is **10,176**, a change of **9.4%**.

The population in the study area in 2000 was **21,996** and in 2010 it was **23,439**, roughly a **6.6%** change. The population in 2011A was **24,056** and the projection for 2016 is **26,477** representing a change of **10.1%**.



	2000 Census	2010 Census	2011A Estimate	2016 Projection	Percent Change	
					2000 to 2010	2011 to 2016
Total Population	21,996	23,439	24,056	26,477	6.6%	10.1%
Total Households	8,337	9,079	9,300	10,176	24.6%	9.4%

### Population by Age



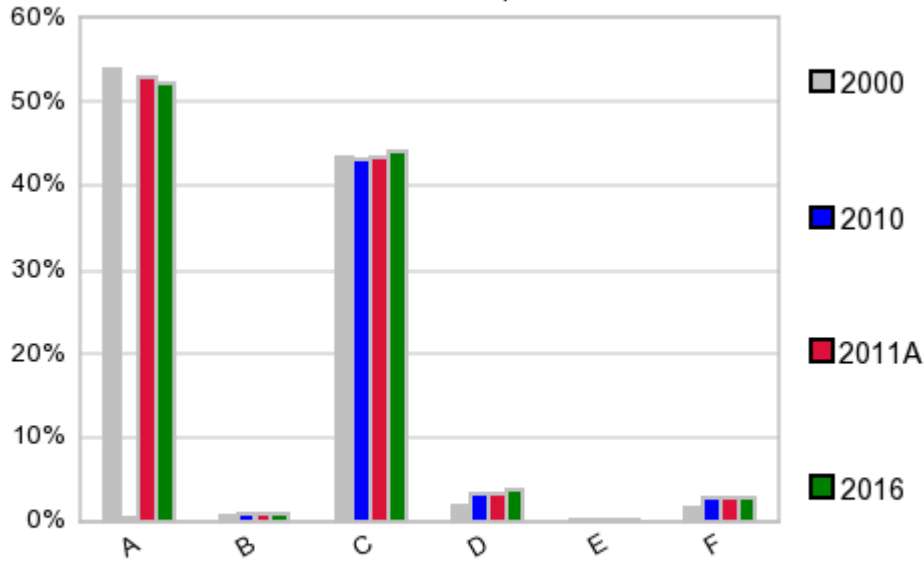
In 1990, the median age of the total population in the study area was **33**, and in 2000, it was **34**. The median age in 2011A is **36** and it is predicted to change in five years to **36** years. In 2011A, females represented **52.9%** of the population with a median age of **38** and males represented **47.1%** of the population with a median age of **33** years. In 2011A, the most prominent age group in this geography is **Age 5 to 14** years. The age group least represented in this geography is **75 +** years.

**Age Groups\***

	1990 Census		2000 Census		2011A Estimate		2016 Projection		Percent Change	
		%		%		%		%	1990 to 2000	2011 to 2016
0 to 4	1,533	7.7%	1,717	7.8%	1,770	7.4%	1,788	6.8%	12.0%	1.0%
5 to 14	3,405	17.0%	3,589	16.3%	3,528	14.7%	3,700	14.0%	5.4%	4.9%
15 to 19	1,651	8.3%	1,712	7.8%	1,890	7.9%	1,949	7.4%	3.7%	3.1%
20 to 24	1,212	6.1%	1,389	6.3%	1,690	7.0%	2,008	7.6%	14.6%	18.8%
25 to 34	2,855	14.3%	2,786	12.7%	2,992	12.4%	3,504	13.2%	-2.4%	17.1%
35 to 44	2,822	14.1%	3,145	14.3%	2,749	11.4%	2,945	11.1%	11.4%	7.1%
45 to 54	1,938	9.7%	2,882	13.1%	3,232	13.4%	3,157	11.9%	48.7%	-2.3%
55 to 64	1,802	9.0%	1,923	8.7%	2,836	11.8%	3,227	12.2%	6.7%	13.8%
65 to 74	1,562	7.8%	1,522	6.9%	1,879	7.8%	2,408	9.1%	-2.6%	28.2%
75 +	1,231	6.2%	1,331	6.1%	1,502	6.2%	1,803	6.8%	8.1%	20.0%

**Population by Race/Ethnicity**

### Race and Ethnicity Percent Composition



In 2011A, the predominant race/ethnicity category in this study area is **White**. The race & ethnicity category least represented in this geography is **American Indian, Alaska Native**.

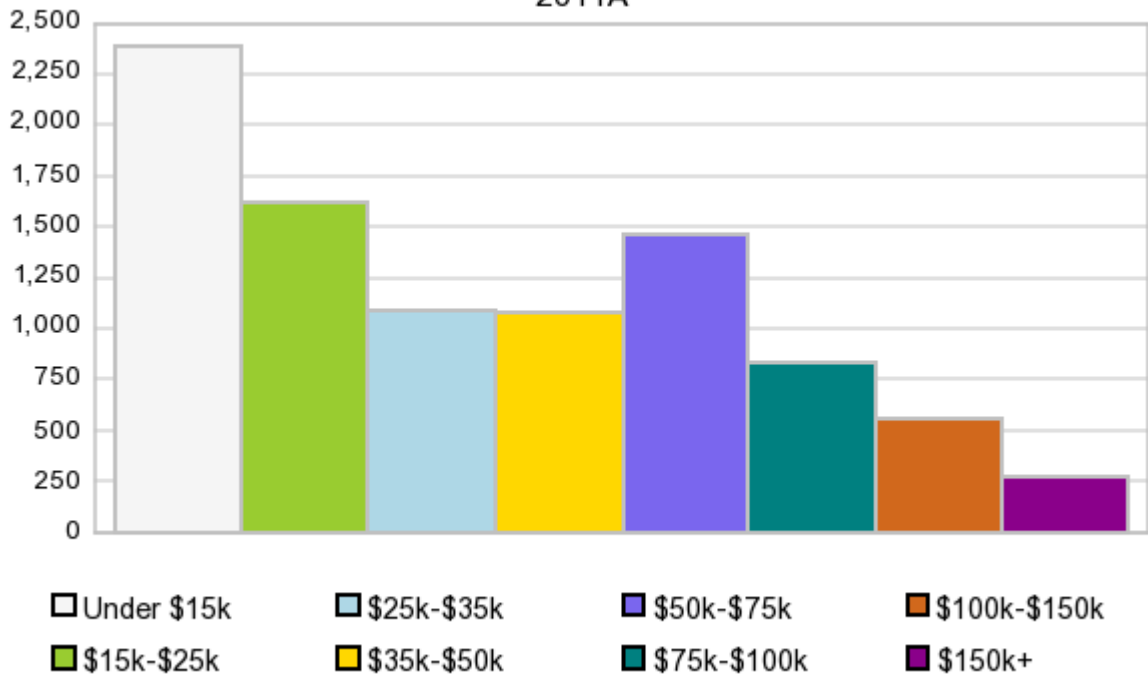
A: White  
 B: Asian Pac Islr  
 C: Black  
 D: Hispanic  
 E: Amer Indian or Alaska Native  
 F: Other or Multi Race

Race & Ethnicity	2000		2010		2011A		2016		Percent Change	
	Census	%	Census	%	Estimate	%	Projection	%	2000 to 2010	2011 to 2016
White	11,894	54.1%	12,487	53.3%	12,755	53.0%	13,789	52.1%	5.0%	8.1%
Black	9,547	43.4%	10,079	43.0%	10,401	43.2%	11,684	44.1%	5.6%	12.3%
American Indian or Alaska Native	33	0.2%	32	0.1%	33	0.1%	37	0.1%	-3.0%	12.1%
Asian/Hawaiian/PI	156	0.7%	194	0.8%	203	0.8%	231	0.9%	24.4%	13.8%
Some Other Race	216	1.0%	420	1.8%	323	1.3%	356	1.3%	94.4%	10.2%
Two or More Races	150	0.7%	227	1.0%	342	1.4%	380	1.4%	51.3%	11.1%
Hispanic Ethnicity	382	1.7%	748	3.2%	791	3.3%	956	3.6%	95.8%	20.9%
Not Hispanic or Latino	21,614	98.3%	22,691	96.8%	23,267	96.7%	25,519	96.4%	5.0%	9.7%

### Households by Income

## Households by Income Group 2011A

In 2011A the predominant household income category in this study area is \$0 - \$15K, and the income group that is least represented in this geography is \$150K +.



### HH Income Categories\*

HH Income Categories*	1990 Census		2000 Census		2011A Estimate		2016 Projection		Percent Change	
	Count	%	Count	%	Count	%	Count	%	1990 to 2000	2011 to 2016
\$0 - \$15,000	3,153	43.3%	2,734	32.8%	2,385	25.6%	2,390	23.5%	-13.3%	0.2%
\$15,000 - \$24,999	1,371	18.8%	1,283	15.4%	1,620	17.4%	1,885	18.5%	-6.4%	16.4%
\$25,000 - \$34,999	1,052	14.4%	1,019	12.2%	1,084	11.7%	1,163	11.4%	-3.1%	7.3%
\$35,000 - \$49,999	947	13.0%	1,187	14.2%	1,083	11.6%	1,058	10.4%	25.3%	-2.3%
\$50,000 - \$74,999	493	6.8%	1,119	13.4%	1,462	15.7%	1,665	16.4%	127.0%	13.9%
\$75,000 - \$99,999	181	2.5%	535	6.4%	831	8.9%	990	9.7%	195.6%	19.1%
\$100,000 - \$149,999	42	0.6%	330	4.0%	558	6.0%	675	6.6%	685.7%	21.0%
\$150,000 +	53	0.7%	130	1.6%	277	3.0%	350	3.4%	145.3%	26.4%
Average Hhld Income	\$25,143		\$38,057		\$43,300		\$44,619		51.4%	3.0%
Median Hhld Income	\$17,810		\$26,450		\$29,536		\$29,985		48.5%	1.5%
Per Capita Income	\$9,288		\$14,424		\$17,402		\$17,847		55.3%	2.6%

\*This Census 2010 data has not yet been released

Current year data is for the year 2011, 5 year projected data is for the year 2016. More About Our Data.  
Demographic data ' 2011 by Experian/Applied Geographic Solutions.

Business List data ' 2011 by D&B<sup>fi</sup>. All rights reserved. All D&B information is powered by DUNSRight™, D&B's Quality Process.

' 2011. DDR is brought to you by Alteryx, Inc.

Alteryx, DemographicsNow.com and the Alteryx and DemographicsNow.com logos are trademarks of Alteryx, Inc. All rights reserved.

Privacy Statement | License Agreement