



Date: 04/23/12

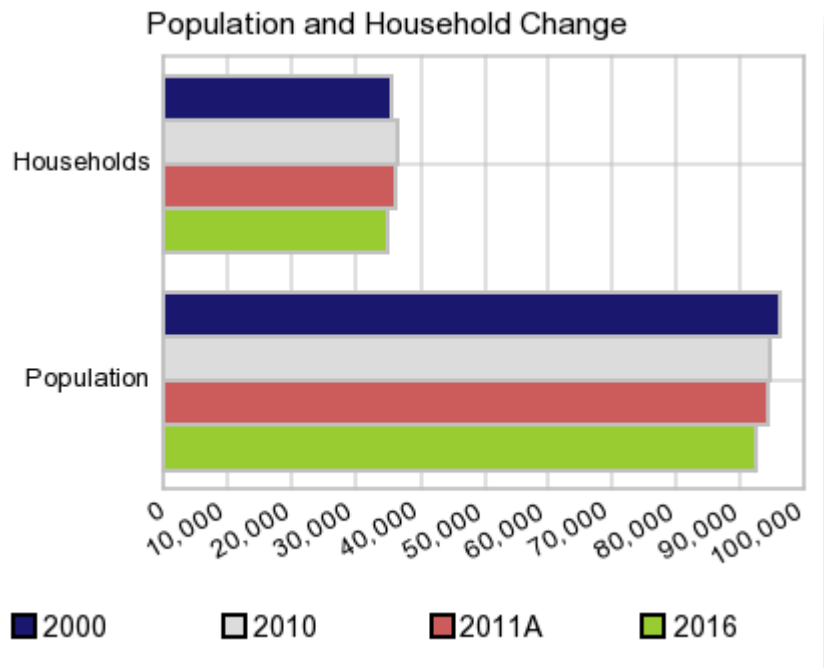
Current Geography Selection: (1 Selected) Counties: Dougherty County

Executive Summary Report with Charts

Population Demographics:

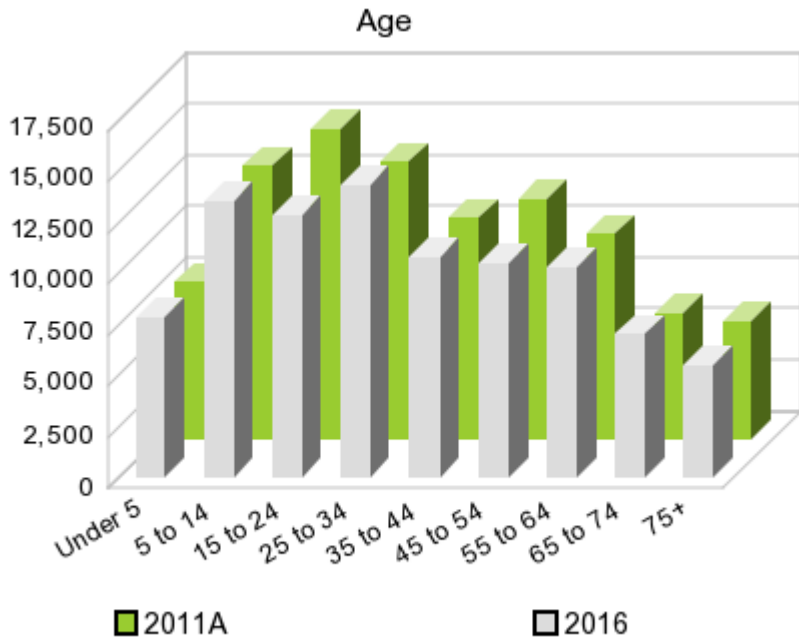
The number of households in the study area in 2000 was **35,552** and changed to **36,508** in 2010, representing a change of **2.7%**. The household count in 2011A was **36,180** and the household projection for 2016 is **34,885**, a change of **-3.6%**.

The population in the study area in 2000 was **96,065** and in 2010 it was **94,565**, roughly a **-1.6%** change. The population in 2011A was **94,189** and the projection for 2016 is **92,541** representing a change of **-1.8%**.



	2000 Census	2010 Census	2011A Estimate	2016 Projection	Percent Change	
					2000 to 2010	2011 to 2016
Total Population	96,065	94,565	94,189	92,541	-1.6%	-1.8%
Total Households	35,552	36,508	36,180	34,885	6.9%	-3.6%

Population by Age



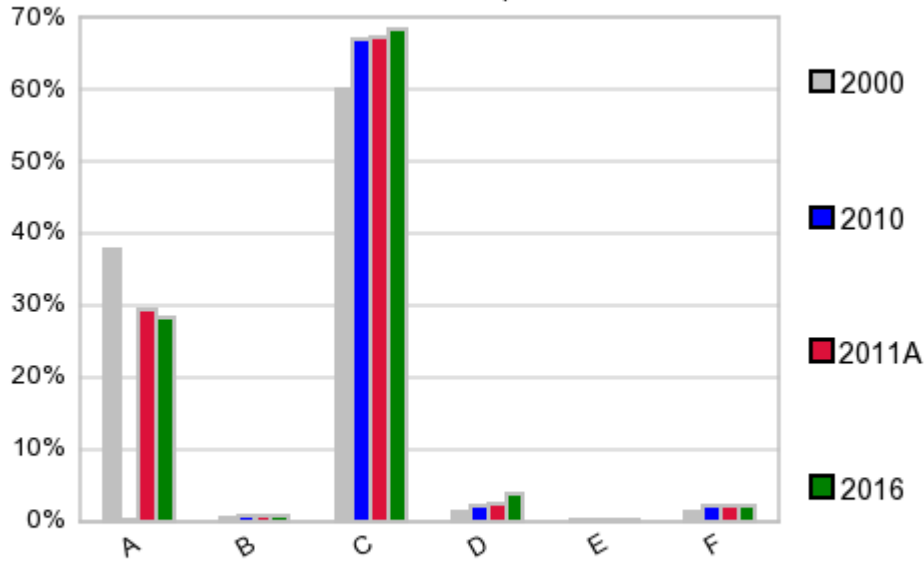
In 1990, the median age of the total population in the study area was **30**, and in 2000, it was **32**. The median age in 2011A is **33** and it is predicted to change in five years to **33** years. In 2011A, females represented **53.7%** of the population with a median age of **35** and males represented **46.3%** of the population with a median age of **31** years. In 2011A, the most prominent age group in this geography is **Age 25 to 34** years. The age group least represented in this geography is **75 +** years.

Age Groups*

	1990		2000		2011A		2016		Percent Change	
	Census	%	Census	%	Estimate	%	Projection	%	1990 to 2000	2011 to 2016
0 to 4	8,134	8.5%	7,336	7.6%	7,668	8.1%	7,817	8.5%	-9.8%	1.9%
5 to 14	16,099	16.7%	14,694	15.3%	13,352	14.2%	13,528	14.6%	-8.7%	1.3%
15 to 19	8,995	9.3%	8,297	8.6%	7,264	7.7%	6,078	6.6%	-7.8%	-16.3%
20 to 24	7,543	7.8%	7,922	8.2%	7,900	8.4%	6,751	7.3%	5.0%	-14.5%
25 to 34	14,889	15.5%	13,244	13.8%	13,549	14.4%	14,327	15.5%	-11.0%	5.7%
35 to 44	13,874	14.4%	13,298	13.8%	10,831	11.5%	10,749	11.6%	-4.2%	-0.8%
45 to 54	9,155	9.5%	12,175	12.7%	11,737	12.5%	10,478	11.3%	33.0%	-10.7%
55 to 64	7,800	8.1%	7,891	8.2%	10,015	10.6%	10,309	11.1%	1.2%	2.9%
65 to 74	6,014	6.2%	6,169	6.4%	6,126	6.5%	6,977	7.5%	2.6%	13.9%
75 +	3,819	4.0%	5,039	5.2%	5,729	6.1%	5,507	6.0%	31.9%	-3.9%

Population by Race/Ethnicity

Race and Ethnicity Percent Composition



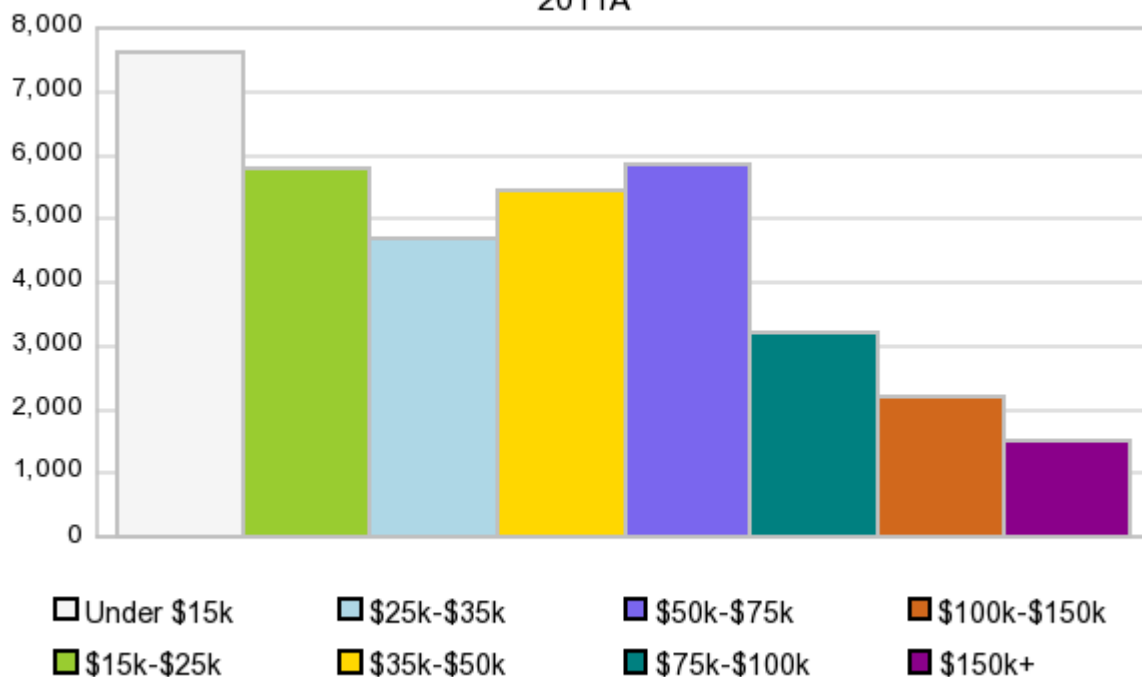
In 2011A, the predominant race/ethnicity category in this study area is **Black**. The race & ethnicity category least represented in this geography is **American Indian, Alaska Native**.

A: White
 B: Asian Pac Islr
 C: Black
 D: Hispanic
 E: Amer Indian or Alaska Native
 F: Other or Multi Race

Race & Ethnicity	2000		2010		2011A		2016		Percent Change	
	Census	%	Census	%	Estimate	%	Projection	%	2000 to 2010	2011 to 2016
White	36,315	37.8%	27,986	29.6%	27,642	29.4%	26,310	28.4%	-22.9%	-4.8%
Black	57,762	60.1%	63,470	67.1%	63,463	67.4%	63,244	68.3%	9.9%	-0.3%
American Indian or Alaska Native	225	0.2%	209	0.2%	207	0.2%	198	0.2%	-7.1%	-4.3%
Asian/Hawaiian/PI	582	0.6%	856	0.9%	851	0.9%	831	0.9%	47.1%	-2.4%
Some Other Race	470	0.5%	921	1.0%	876	0.9%	853	0.9%	96.0%	-2.6%
Two or More Races	711	0.7%	1,123	1.2%	1,150	1.2%	1,101	1.2%	57.9%	-4.3%
Hispanic Ethnicity	1,292	1.3%	2,073	2.2%	2,356	2.5%	3,477	3.8%	60.4%	47.6%
Not Hispanic or Latino	94,773	98.7%	92,492	97.8%	91,834	97.5%	89,061	96.2%	-2.4%	-3.0%

Households by Income

Households by Income Group 2011A



In 2011A the predominant household income category in this study area is **\$0 - \$15K**, and the income group that is least represented in this geography is **\$150K +**.

HH Income Categories*

HH Income Categories*	1990 Census		2000 Census		2011A Estimate		2016 Projection		Percent Change	
		%		%		%		%	1990 to 2000	2011 to 2016
\$0 - \$15,000	11,292	33.1%	9,162	25.8%	7,588	21.0%	6,768	19.4%	-18.9%	-10.8%
\$15,000 - \$24,999	6,524	19.1%	5,658	15.9%	5,759	15.9%	5,608	16.1%	-13.3%	-2.6%
\$25,000 - \$34,999	5,028	14.7%	4,499	12.7%	4,675	12.9%	4,619	13.2%	-10.5%	-1.2%
\$35,000 - \$49,999	5,441	15.9%	5,778	16.3%	5,447	15.1%	5,015	14.4%	6.2%	-7.9%
\$50,000 - \$74,999	3,957	11.6%	5,388	15.2%	5,843	16.2%	5,758	16.5%	36.2%	-1.5%
\$75,000 - \$99,999	1,065	3.1%	2,437	6.9%	3,195	8.8%	3,370	9.7%	128.8%	5.5%
\$100,000 - \$149,999	555	1.6%	1,613	4.5%	2,191	6.1%	2,208	6.3%	190.6%	0.8%
\$150,000 +	288	0.8%	1,017	2.9%	1,484	4.1%	1,539	4.4%	253.1%	3.7%
Average Hhld Income	\$30,384		\$43,747		\$51,408		\$54,264		44.0%	5.6%
Median Hhld Income	\$23,555		\$31,147		\$35,149		\$36,029		32.2%	2.5%
Per Capita Income	\$10,891		\$16,190		\$21,484		\$22,508		48.7%	4.8%

*This Census 2010 data has not yet been released

Current year data is for the year **2011**, 5 year projected data is for the year **2016**. More About Our Data.
Demographic data ' 2011 by Experian/Applied Geographic Solutions.

Business List data ' 2011 by D&B^{fi}. All rights reserved. All D&B information is powered by DUNSRight™, D&B's Quality Process.

' 2011. DDR is brought to you by Alteryx, Inc.

Alteryx, DemographicsNow.com and the Alteryx and DemographicsNow.com logos are trademarks of Alteryx, Inc. All rights reserved.

Privacy Statement | License Agreement