



Date: 04/23/12

Current Geography Selection: (1 Selected) Counties: Floyd County

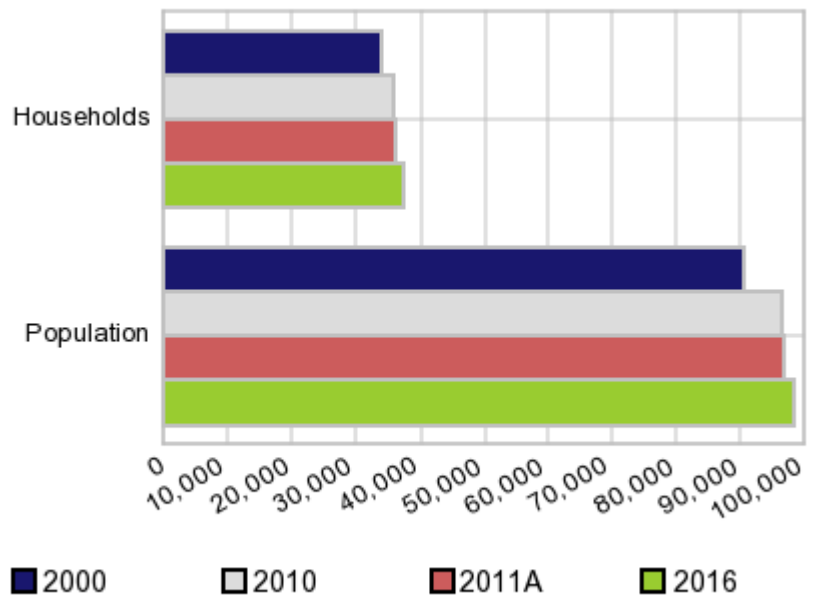
## Executive Summary Report with Charts

### Population Demographics:

The number of households in the study area in 2000 was **34,028** and changed to **35,930** in 2010, representing a change of **5.6%**. The household count in 2011A was **36,195** and the household projection for 2016 is **37,244**, a change of **2.9%**.

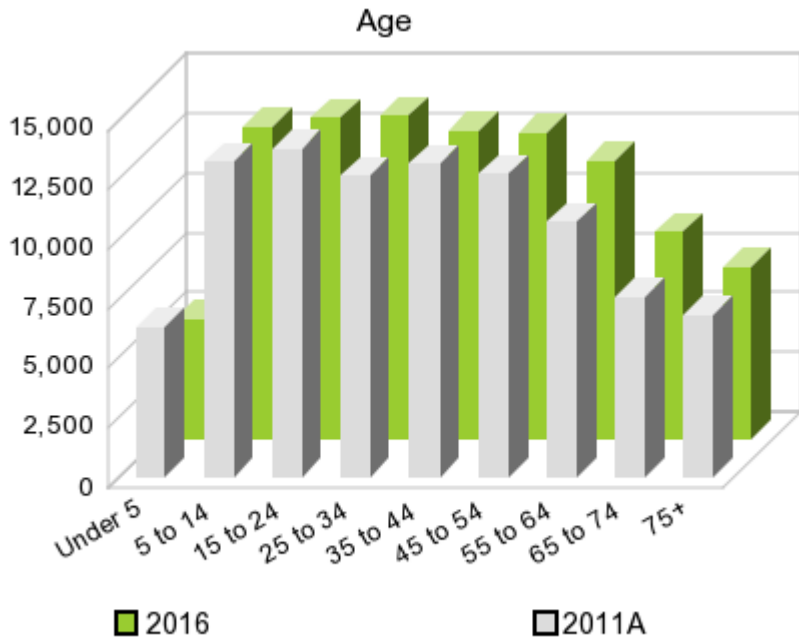
The population in the study area in 2000 was **90,565** and in 2010 it was **96,317**, roughly a **6.4%** change. The population in 2011A was **96,768** and the projection for 2016 is **98,423** representing a change of **1.7%**.

Population and Household Change



	2000 Census	2010 Census	2011A Estimate	2016 Projection	Percent Change	
					2000 to 2010	2011 to 2016
Total Population	90,565	96,317	96,768	98,423	6.4%	1.7%
Total Households	34,028	35,930	36,195	37,244	17.7%	2.9%

### Population by Age



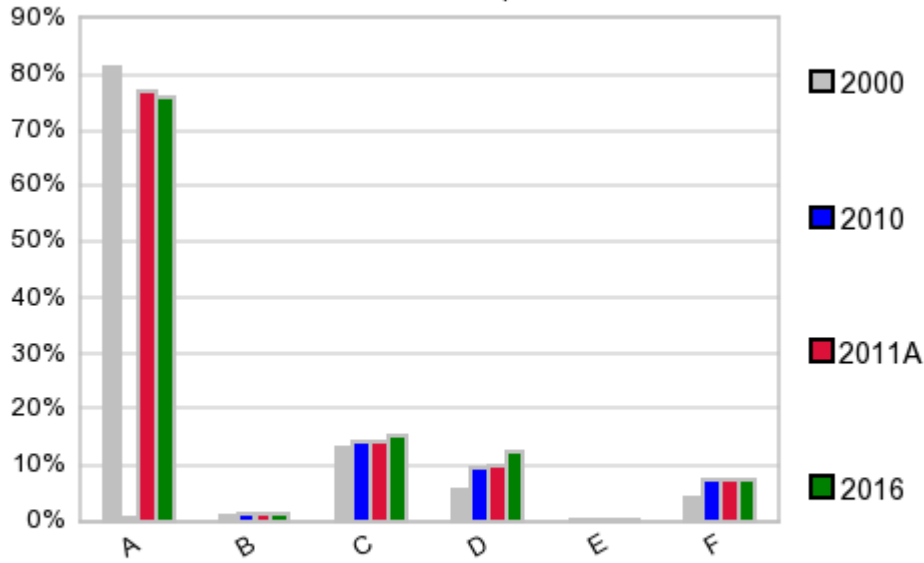
In 1990, the median age of the total population in the study area was **35**, and in 2000, it was **36**. The median age in 2011A is **37** and it is predicted to change in five years to **38** years. In 2011A, females represented **51.4%** of the population with a median age of **39** and males represented **48.7%** of the population with a median age of **35** years. In 2011A, the most prominent age group in this geography is **Age 5 to 14** years. The age group least represented in this geography is **0 to 4** years.

**Age Groups\***

	1990 Census		2000 Census		2011A Estimate		2016 Projection		Percent Change	
		%		%		%		%	1990 to 2000	2011 to 2016
0 to 4	5,427	6.7%	5,970	6.6%	6,307	6.5%	4,999	5.1%	10.0%	-20.7%
5 to 14	10,611	13.1%	12,688	14.0%	13,212	13.7%	13,085	13.3%	19.6%	-1.0%
15 to 19	6,397	7.9%	6,592	7.3%	6,908	7.1%	6,563	6.7%	3.0%	-5.0%
20 to 24	6,292	7.7%	6,797	7.5%	6,871	7.1%	6,920	7.0%	8.0%	0.7%
25 to 34	12,503	15.4%	12,307	13.6%	12,627	13.0%	13,540	13.8%	-1.6%	7.2%
35 to 44	11,494	14.1%	13,504	14.9%	13,104	13.5%	12,869	13.1%	17.5%	-1.8%
45 to 54	8,711	10.7%	11,625	12.8%	12,702	13.1%	12,795	13.0%	33.5%	0.7%
55 to 64	7,966	9.8%	8,467	9.4%	10,712	11.1%	11,694	11.9%	6.3%	9.2%
65 to 74	6,806	8.4%	6,728	7.4%	7,509	7.8%	8,704	8.8%	-1.1%	15.9%
75 +	5,040	6.2%	5,887	6.5%	6,824	7.1%	7,255	7.4%	16.8%	6.3%

**Population by Race/Ethnicity**

### Race and Ethnicity Percent Composition



In 2011A, the predominant race/ethnicity category in this study area is **White**. The race & ethnicity category least represented in this geography is **American Indian, Alaska Native**.

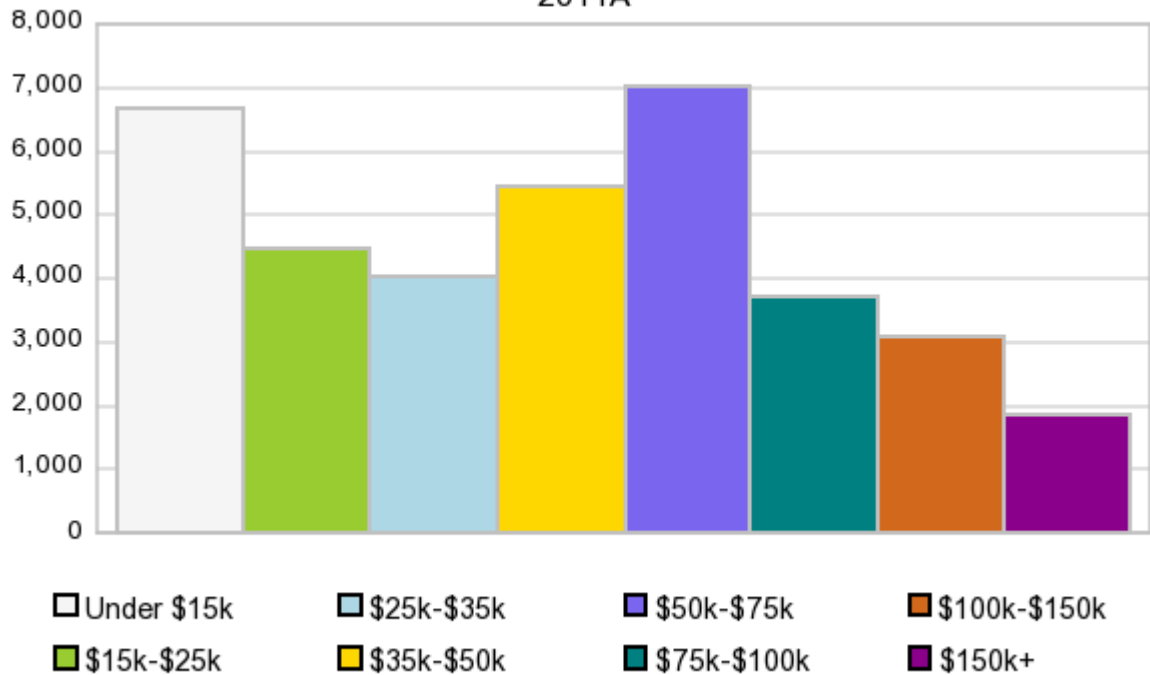
A: White  
 B: Asian Pac Islr  
 C: Black  
 D: Hispanic  
 E: Amer Indian or Alaska Native  
 F: Other or Multi Race

Race & Ethnicity	2000		2010		2011A		2016		Percent Change	
	Census	%	Census	%	Estimate	%	Projection	%	2000 to 2010	2011 to 2016
White	73,668	81.3%	74,055	76.9%	74,171	76.7%	74,568	75.8%	0.5%	0.5%
Black	12,050	13.3%	13,640	14.2%	13,905	14.4%	14,914	15.2%	13.2%	7.3%
American Indian or Alaska Native	283	0.3%	344	0.4%	346	0.4%	354	0.4%	21.6%	2.3%
Asian/Hawaiian/PI	928	1.0%	1,369	1.4%	1,390	1.4%	1,481	1.5%	47.5%	6.5%
Some Other Race	2,604	2.9%	5,110	5.3%	4,962	5.1%	5,040	5.1%	96.2%	1.6%
Two or More Races	1,032	1.1%	1,799	1.9%	1,990	2.1%	2,071	2.1%	74.3%	4.1%
Hispanic Ethnicity	4,983	5.5%	8,987	9.3%	9,692	10.0%	12,470	12.7%	80.4%	28.7%
Not Hispanic or Latino	85,582	94.5%	87,330	90.7%	87,075	90.0%	85,957	87.3%	2.0%	-1.3%

### Households by Income

## Households by Income Group 2011A

In 2011A the predominant household income category in this study area is **\$50K - \$75K**, and the income group that is least represented in this geography is **\$150K +**.



### HH Income Categories\*

	1990		2000		2011A		2016		Percent Change	
	Census	%	Census	%	Estimate	%	Projection	%	1990 to 2000	2011 to 2016
\$0 - \$15,000	9,126	29.9%	6,503	19.1%	6,644	18.4%	6,685	18.0%	-28.7%	0.6%
\$15,000 - \$24,999	5,764	18.9%	5,045	14.8%	4,458	12.3%	4,189	11.2%	-12.5%	-6.0%
\$25,000 - \$34,999	4,950	16.2%	5,189	15.3%	4,031	11.1%	3,602	9.7%	4.8%	-10.6%
\$35,000 - \$49,999	5,203	17.0%	6,126	18.0%	5,430	15.0%	5,130	13.8%	17.7%	-5.5%
\$50,000 - \$74,999	3,990	13.1%	6,108	18.0%	7,029	19.4%	7,463	20.0%	53.1%	6.2%
\$75,000 - \$99,999	784	2.6%	2,582	7.6%	3,689	10.2%	4,221	11.3%	229.3%	14.4%
\$100,000 - \$149,999	463	1.5%	1,660	4.9%	3,088	8.5%	3,709	10.0%	258.5%	20.1%
\$150,000 +	230	0.8%	815	2.4%	1,824	5.0%	2,241	6.0%	254.3%	22.9%
Average Hhld Income	\$31,630		\$46,494		\$56,367		\$61,917		47.0%	9.8%
Median Hhld Income	\$25,647		\$35,638		\$43,208		\$47,203		39.0%	9.2%
Per Capita Income	\$12,125		\$17,469		\$22,575		\$25,132		44.1%	11.3%

\*This Census 2010 data has not yet been released

Current year data is for the year **2011**, 5 year projected data is for the year **2016**. More About Our Data.  
Demographic data ' 2011 by Experian/Applied Geographic Solutions.

Business List data ' 2011 by D&B<sup>fi</sup>. All rights reserved. All D&B information is powered by DUNSRight™, D&B's Quality Process.

**' 2011. DDR is brought to you by Alteryx, Inc.**

Alteryx, DemographicsNow.com and the Alteryx and DemographicsNow.com logos are trademarks of Alteryx, Inc. All rights reserved.

Privacy Statement | License Agreement