



Date: 04/23/12

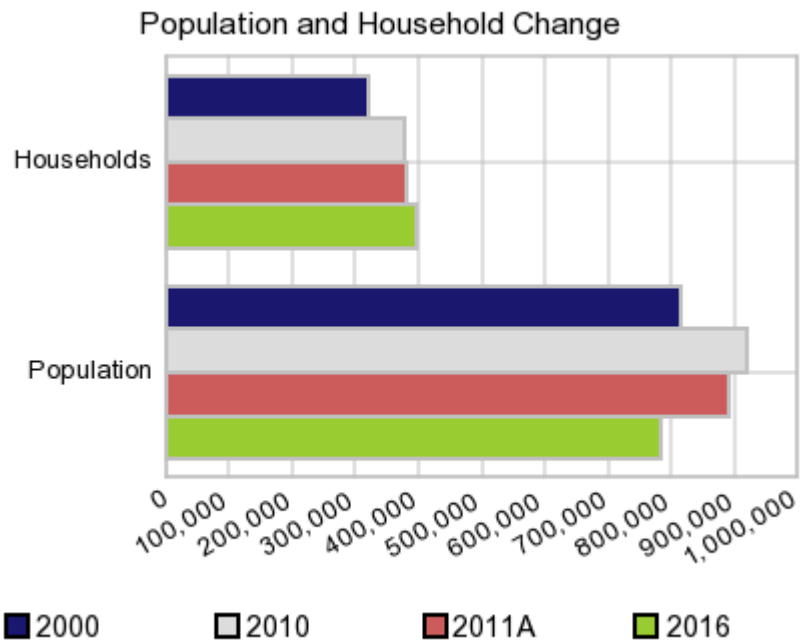
Current Geography Selection: (1 Selected) Counties: Fulton County

## Executive Summary Report with Charts

### Population Demographics:

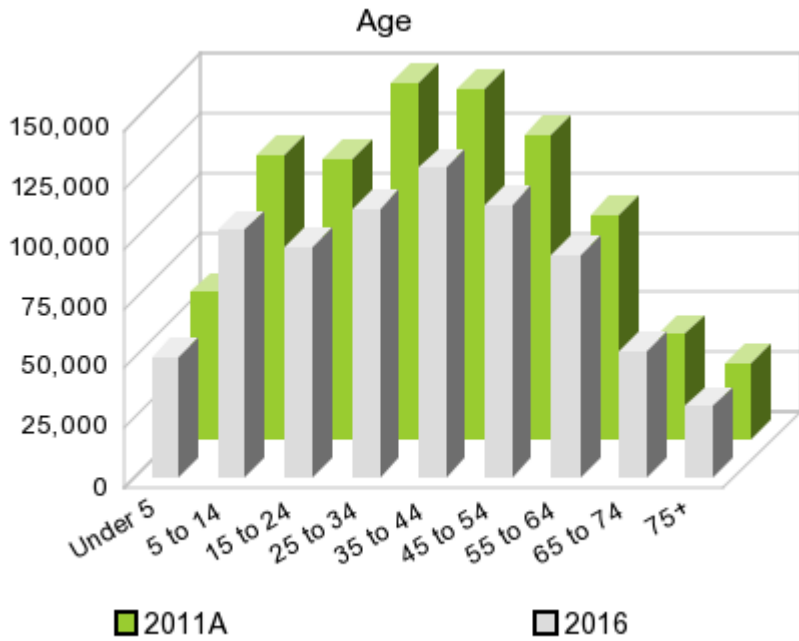
The number of households in the study area in 2000 was **321,242** and changed to **376,377** in 2010, representing a change of **17.2%**. The household count in 2011A was **380,693** and the household projection for 2016 is **398,124**, a change of **4.6%**.

The population in the study area in 2000 was **816,006** and in 2010 it was **920,581**, roughly a **12.8%** change. The population in 2011A was **891,570** and the projection for 2016 is **783,349** representing a change of **-12.1%**.



	2000 Census	2010 Census	2011A Estimate	2016 Projection	Percent Change	
					2000 to 2010	2011 to 2016
Total Population	816,006	920,581	891,570	783,349	12.8%	-12.1%
Total Households	321,242	376,377	380,693	398,124	46.4%	4.6%

### Population by Age



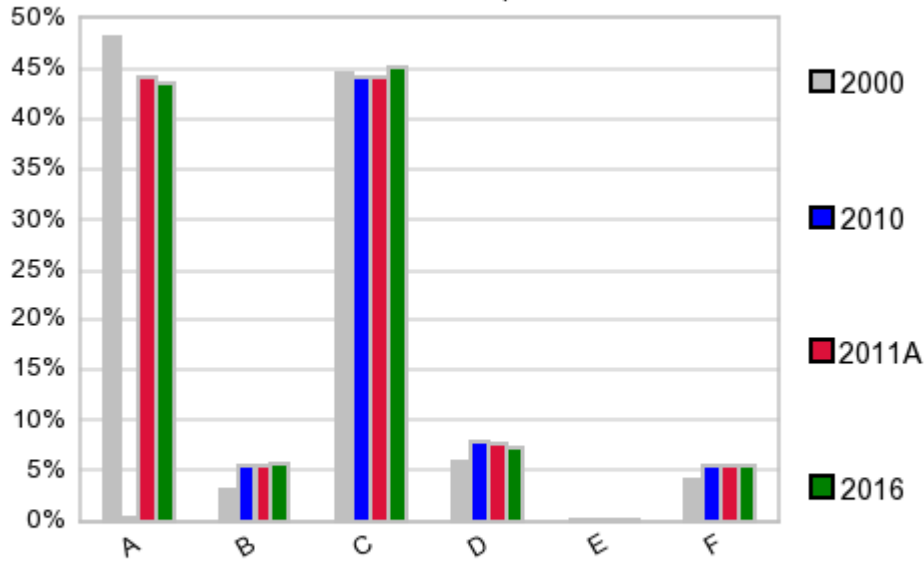
In 1990, the median age of the total population in the study area was **32**, and in 2000, it was **33**. The median age in 2011A is **35** and it is predicted to change in five years to **37** years. In 2011A, females represented **50.8%** of the population with a median age of **36** and males represented **49.2%** of the population with a median age of **34** years. In 2011A, the most prominent age group in this geography is **Age 25 to 34** years. The age group least represented in this geography is **75 +** years.

**Age Groups\***

	1990 Census		2000 Census		2011A Estimate		2016 Projection		Percent Change	
		%		%		%		%	1990 to 2000	2011 to 2016
0 to 4	48,217	7.4%	56,819	7.0%	61,717	6.9%	50,536	6.5%	17.8%	-18.1%
5 to 14	84,344	13.0%	112,247	13.8%	118,815	13.3%	103,603	13.2%	33.1%	-12.8%
15 to 19	46,406	7.2%	55,166	6.8%	57,323	6.4%	48,505	6.2%	18.9%	-15.4%
20 to 24	56,320	8.7%	64,660	7.9%	60,583	6.8%	48,286	6.2%	14.8%	-20.3%
25 to 34	127,221	19.6%	151,534	18.6%	149,457	16.8%	112,517	14.4%	19.1%	-24.7%
35 to 44	108,955	16.8%	137,850	16.9%	146,706	16.5%	129,825	16.6%	26.5%	-11.5%
45 to 54	67,092	10.3%	109,132	13.4%	126,948	14.2%	114,045	14.6%	62.7%	-10.2%
55 to 64	45,604	7.0%	59,608	7.3%	93,889	10.5%	93,192	11.9%	30.7%	-0.7%
65 to 74	36,165	5.6%	35,759	4.4%	44,116	4.9%	53,069	6.8%	-1.1%	20.3%
75 +	28,626	4.4%	33,231	4.1%	32,003	3.6%	29,728	3.8%	16.1%	-7.1%

**Population by Race/Ethnicity**

### Race and Ethnicity Percent Composition



In 2011A, the predominant race/ethnicity category in this study area is **Black**. The race & ethnicity category least represented in this geography is **American Indian, Alaska Native**.

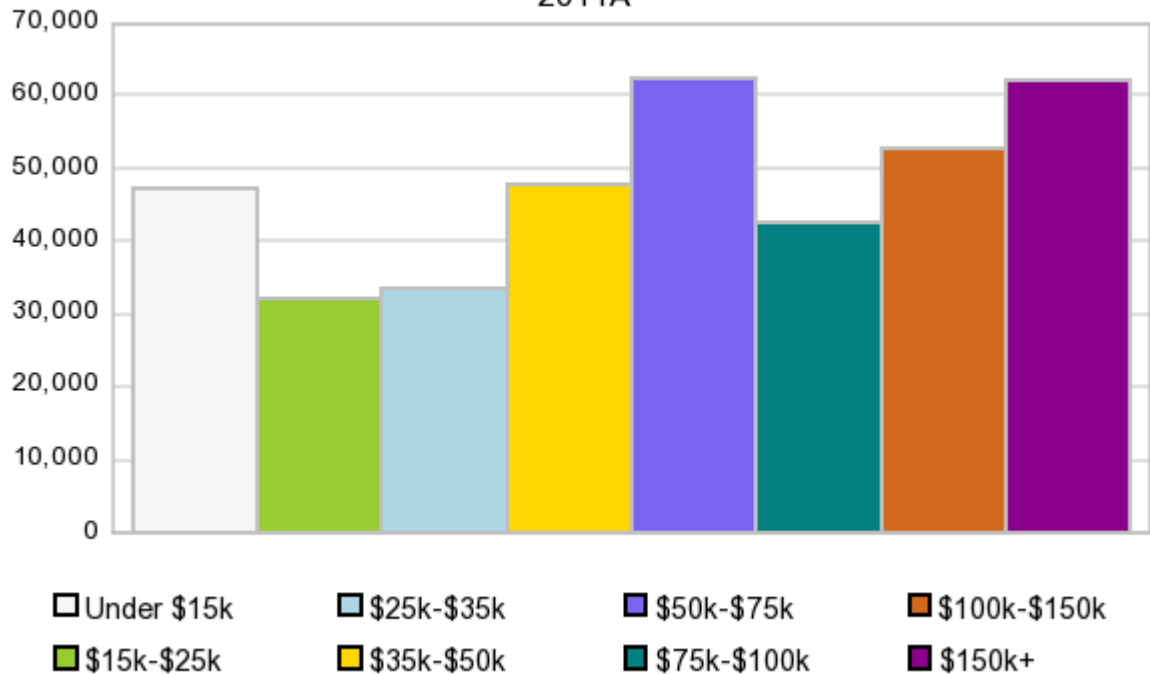
A: White  
 B: Asian Pac Islr  
 C: Black  
 D: Hispanic  
 E: Amer Indian or Alaska Native  
 F: Other or Multi Race

Race & Ethnicity	2000		2010		2011A		2016		Percent Change	
	Census	%	Census	%	Estimate	%	Projection	%	2000 to 2010	2011 to 2016
White	392,598	48.1%	409,697	44.5%	394,714	44.3%	340,099	43.4%	4.4%	-13.8%
Black	363,656	44.6%	405,575	44.1%	394,799	44.3%	353,400	45.1%	11.5%	-10.5%
American Indian or Alaska Native	1,514	0.2%	2,259	0.2%	2,184	0.2%	1,904	0.2%	49.2%	-12.8%
Asian/Hawaiian/PI	25,169	3.1%	51,904	5.6%	50,400	5.7%	44,685	5.7%	106.2%	-11.3%
Some Other Race	21,216	2.6%	30,867	3.4%	28,557	3.2%	24,894	3.2%	45.5%	-12.8%
Two or More Races	11,853	1.5%	20,279	2.2%	20,910	2.4%	18,359	2.3%	71.1%	-12.2%
Hispanic Ethnicity	48,056	5.9%	72,566	7.9%	69,326	7.8%	57,584	7.4%	51.0%	-16.9%
Not Hispanic or Latino	767,950	94.1%	848,015	92.1%	822,248	92.2%	725,755	92.7%	10.4%	-11.7%

### Households by Income

## Households by Income Group 2011A

In 2011A the predominant household income category in this study area is **\$50K - \$75K**, and the income group that is least represented in this geography is **\$15K - \$25K**.



### HH Income Categories\*

HH Income Categories*	1990 Census		2000 Census		2011A Estimate		2016 Projection		Percent Change	
	Count	%	Count	%	Count	%	Count	%	1990 to 2000	2011 to 2016
\$0 - \$15,000	67,988	26.4%	53,023	16.5%	47,358	12.4%	45,933	11.5%	-22.0%	-3.0%
\$15,000 - \$24,999	41,312	16.1%	35,159	10.9%	31,990	8.4%	30,503	7.7%	-14.9%	-4.6%
\$25,000 - \$34,999	36,157	14.1%	35,209	11.0%	33,510	8.8%	32,487	8.2%	-2.6%	-3.1%
\$35,000 - \$49,999	37,830	14.7%	43,700	13.6%	47,856	12.6%	48,737	12.2%	15.5%	1.8%
\$50,000 - \$74,999	35,850	13.9%	52,972	16.5%	62,517	16.4%	65,366	16.4%	47.8%	4.6%
\$75,000 - \$99,999	15,642	6.1%	32,027	10.0%	42,451	11.2%	46,168	11.6%	104.8%	8.8%
\$100,000 - \$149,999	11,681	4.5%	34,445	10.7%	52,795	13.9%	58,600	14.7%	194.9%	11.0%
\$150,000 +	10,712	4.2%	34,707	10.8%	62,199	16.3%	70,311	17.7%	224.0%	13.0%
Average Hhld Income	\$46,058		\$74,926		\$97,046		\$108,900		62.7%	12.2%
Median Hhld Income	\$30,018		\$47,452		\$60,865		\$65,122		58.1%	7.0%
Per Capita Income	\$18,413		\$29,497		\$43,198		\$57,350		60.2%	32.8%

\*This Census 2010 data has not yet been released

Current year data is for the year **2011**, 5 year projected data is for the year **2016**. More About Our Data.  
Demographic data ' 2011 by Experian/Applied Geographic Solutions.

Business List data ' 2011 by D&B<sup>fi</sup>. All rights reserved. All D&B information is powered by DUNSRight™, D&B's Quality Process.

**' 2011. DDR is brought to you by Alteryx, Inc.**

Alteryx, DemographicsNow.com and the Alteryx and DemographicsNow.com logos are trademarks of Alteryx, Inc. All rights reserved.

Privacy Statement | License Agreement