



Date: 04/23/12

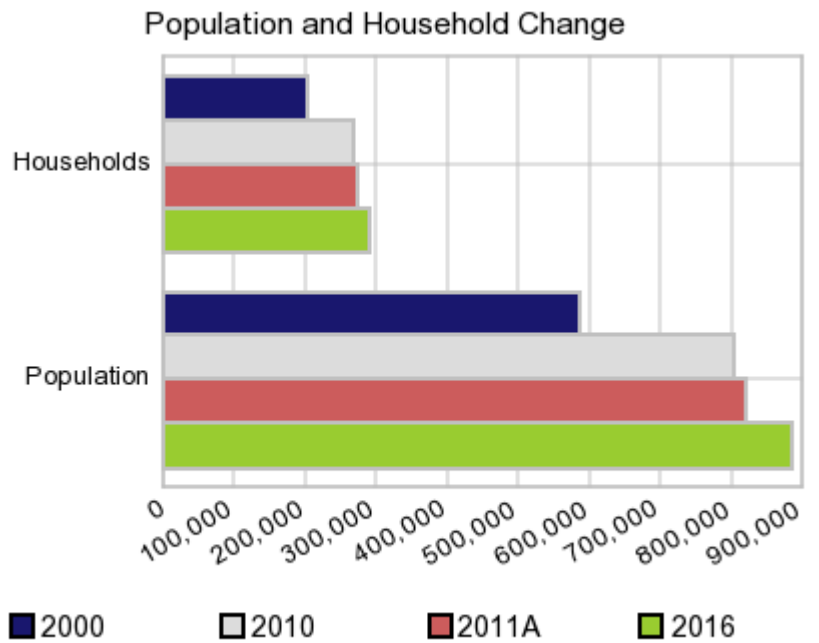
Current Geography Selection: (1 Selected) Counties: Gwinnett County

Executive Summary Report with Charts

Population Demographics:

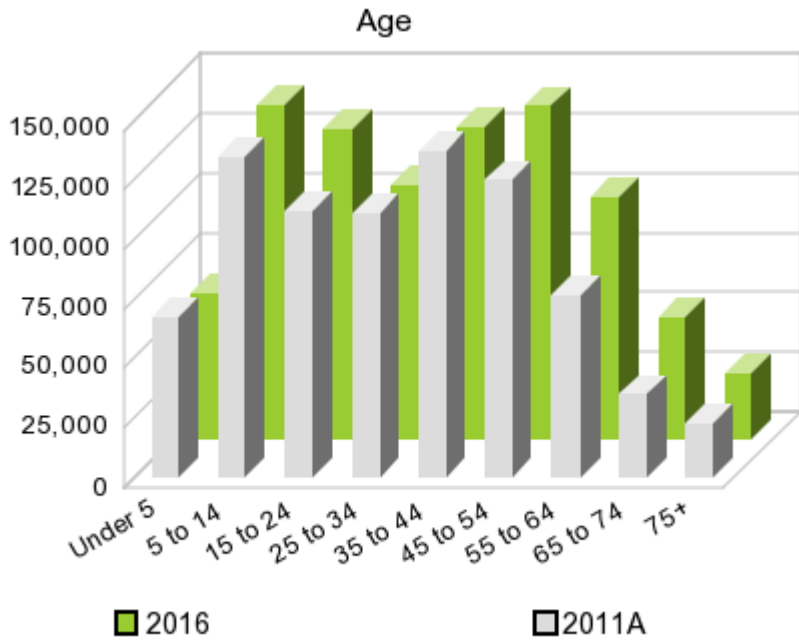
The number of households in the study area in 2000 was **202,317** and changed to **268,519** in 2010, representing a change of **32.7%**. The household count in 2011A was **273,069** and the household projection for 2016 is **292,156**, a change of **7.0%**.

The population in the study area in 2000 was **588,448** and in 2010 it was **805,321**, roughly a **36.9%** change. The population in 2011A was **821,495** and the projection for 2016 is **887,252** representing a change of **8.0%**.



	2000 Census	2010 Census	2011A Estimate	2016 Projection	Percent Change	
					2000 to 2010	2011 to 2016
Total Population	588,448	805,321	821,495	887,252	36.9%	8.0%
Total Households	202,317	268,519	273,069	292,156	111.5%	7.0%

Population by Age



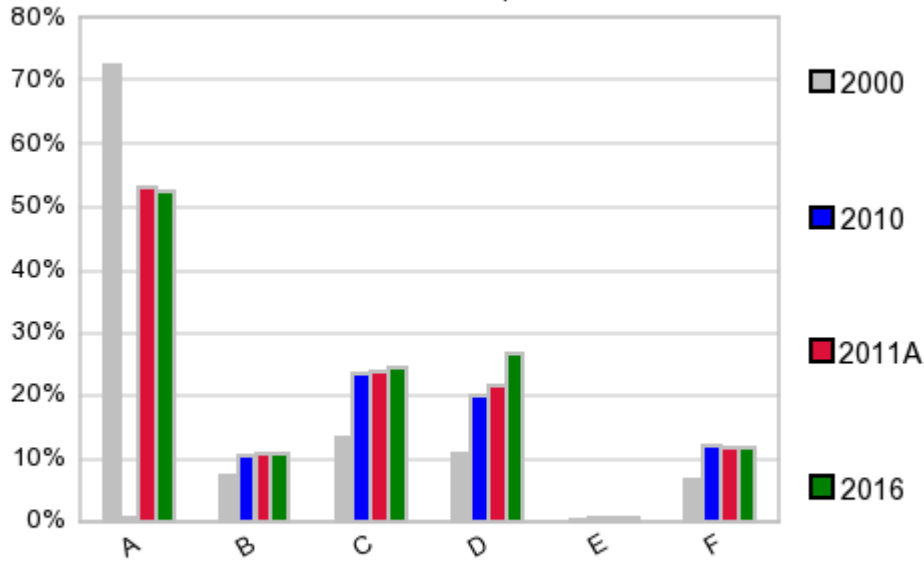
In 1990, the median age of the total population in the study area was **31**, and in 2000, it was **33**. The median age in 2011A is **34** and it is predicted to change in five years to **36** years. In 2011A, females represented **49.7%** of the population with a median age of **35** and males represented **50.3%** of the population with a median age of **33** years. In 2011A, the most prominent age group in this geography is **Age 35 to 44** years. The age group least represented in this geography is **75 +** years.

Age Groups*

	1990 Census		2000 Census		2011A Estimate		2016 Projection		Percent Change	
		%		%		%		%	1990 to 2000	2011 to 2016
0 to 4	30,489	8.6%	47,075	8.0%	67,453	8.2%	60,721	6.8%	54.4%	-10.0%
5 to 14	53,752	15.2%	92,877	15.8%	134,620	16.4%	139,885	15.8%	72.8%	3.9%
15 to 19	23,238	6.6%	40,435	6.9%	60,726	7.4%	67,812	7.6%	74.0%	11.7%
20 to 24	25,267	7.2%	36,610	6.2%	51,083	6.2%	62,207	7.0%	44.9%	21.8%
25 to 34	80,697	22.9%	104,688	17.8%	111,292	13.5%	106,044	12.0%	29.7%	-4.7%
35 to 44	68,375	19.4%	115,719	19.7%	136,940	16.7%	130,362	14.7%	69.2%	-4.8%
45 to 54	35,916	10.2%	81,237	13.8%	124,800	15.2%	139,671	15.7%	126.2%	11.9%
55 to 64	18,380	5.2%	38,208	6.5%	76,523	9.3%	101,496	11.4%	107.9%	32.6%
65 to 74	10,638	3.0%	18,947	3.2%	35,036	4.3%	51,114	5.8%	78.1%	45.9%
75 +	6,141	1.7%	12,652	2.2%	22,985	2.8%	27,887	3.1%	106.0%	21.3%

Population by Race/Ethnicity

Race and Ethnicity Percent Composition



In 2011A, the predominant race/ethnicity category in this study area is **White**. The race & ethnicity category least represented in this geography is **American Indian, Alaska Native**.

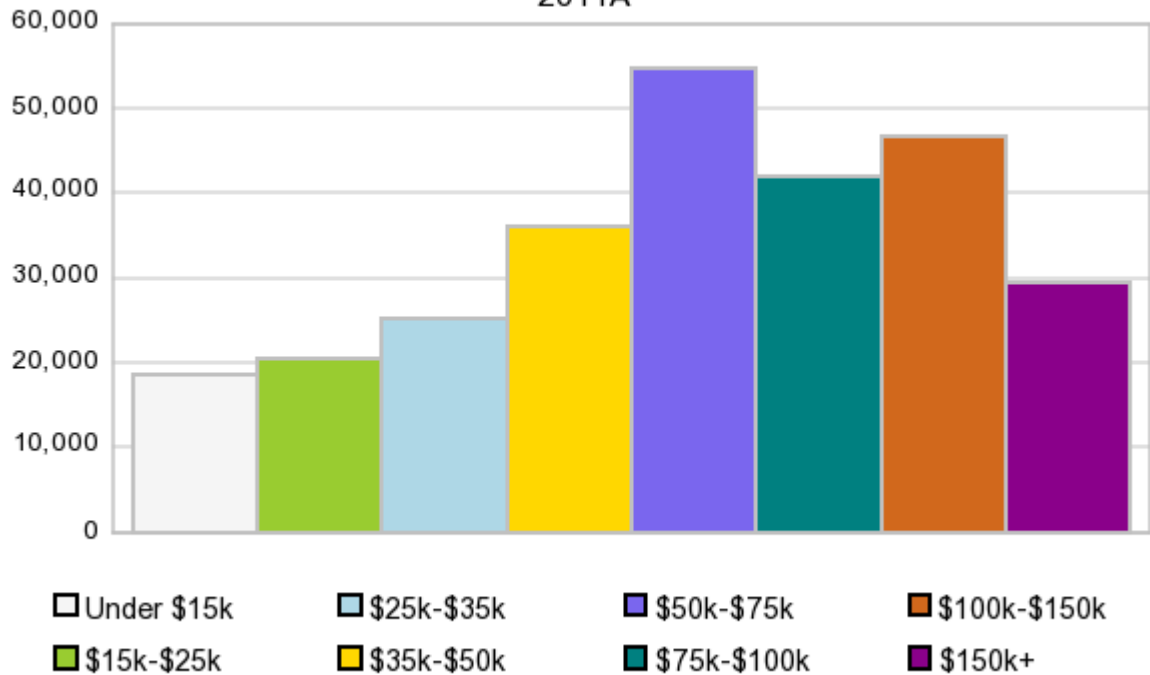
A: White
 B: Asian Pac Islr
 C: Black
 D: Hispanic
 E: Amer Indian or Alaska Native
 F: Other or Multi Race

Race & Ethnicity	2000		2010		2011A		2016		Percent Change	
	Census	%	Census	%	Estimate	%	Projection	%	2000 to 2010	2011 to 2016
White	427,883	72.7%	429,563	53.3%	436,669	53.2%	465,098	52.4%	0.4%	6.5%
Black	78,224	13.3%	190,167	23.6%	195,505	23.8%	217,316	24.5%	143.1%	11.2%
American Indian or Alaska Native	1,638	0.3%	4,038	0.5%	4,082	0.5%	4,376	0.5%	146.5%	7.2%
Asian/Hawaiian/PI	42,623	7.2%	85,769	10.7%	87,772	10.7%	95,707	10.8%	101.2%	9.0%
Some Other Race	25,407	4.3%	70,492	8.8%	62,537	7.6%	67,074	7.6%	177.5%	7.3%
Two or More Races	12,673	2.2%	25,292	3.1%	34,926	4.3%	37,687	4.3%	99.6%	7.9%
Hispanic Ethnicity	64,137	10.9%	162,035	20.1%	176,462	21.5%	234,607	26.4%	152.6%	33.0%
Not Hispanic or Latino	524,311	89.1%	643,286	79.9%	645,046	78.5%	652,639	73.6%	22.7%	1.2%

Households by Income

Households by Income Group 2011A

In 2011A the predominant household income category in this study area is **\$50K - \$75K**, and the income group that is least represented in this geography is **\$0 - \$15K**.



HH Income Categories*

HH Income Categories*	1990 Census		2000 Census		2011A Estimate		2016 Projection		Percent Change	
	Count	%	Count	%	Count	%	Count	%	1990 to 2000	2011 to 2016
\$0 - \$15,000	10,693	8.4%	11,473	5.7%	18,527	6.8%	20,817	7.1%	7.3%	12.4%
\$15,000 - \$24,999	15,363	12.1%	14,210	7.0%	20,330	7.4%	22,100	7.6%	-7.5%	8.7%
\$25,000 - \$34,999	19,478	15.3%	19,357	9.6%	25,109	9.2%	26,275	9.0%	-0.6%	4.6%
\$35,000 - \$49,999	30,579	24.1%	33,528	16.6%	36,037	13.2%	34,753	11.9%	9.6%	-3.6%
\$50,000 - \$74,999	31,995	25.2%	49,652	24.5%	54,841	20.1%	53,896	18.4%	55.2%	-1.7%
\$75,000 - \$99,999	11,810	9.3%	34,085	16.9%	42,009	15.4%	43,441	14.9%	188.6%	3.4%
\$100,000 - \$149,999	5,073	4.0%	27,701	13.7%	46,628	17.1%	53,976	18.5%	446.0%	15.8%
\$150,000 +	1,974	1.6%	12,311	6.1%	29,595	10.8%	36,882	12.6%	523.7%	24.6%
Average Hhld Income	\$49,522		\$71,798		\$80,685		\$86,260		45.0%	6.9%
Median Hhld Income	\$43,546		\$60,625		\$65,726		\$69,445		39.2%	5.7%
Per Capita Income	\$17,836		\$24,685		\$27,166		\$28,724		38.4%	5.7%

*This Census 2010 data has not yet been released

Current year data is for the year **2011**, 5 year projected data is for the year **2016**. More About Our Data.
Demographic data ' 2011 by Experian/Applied Geographic Solutions.

Business List data ' 2011 by D&B^{fi}. All rights reserved. All D&B information is powered by DUNSRightTM, D&B's Quality Process.

' 2011. DDR is brought to you by Alteryx, Inc.

Alteryx, DemographicsNow.com and the Alteryx and DemographicsNow.com logos are trademarks of Alteryx, Inc. All rights reserved.

Privacy Statement | License Agreement