



Date: 04/23/12

Current Geography Selection: (1 Selected) Counties: Hall County

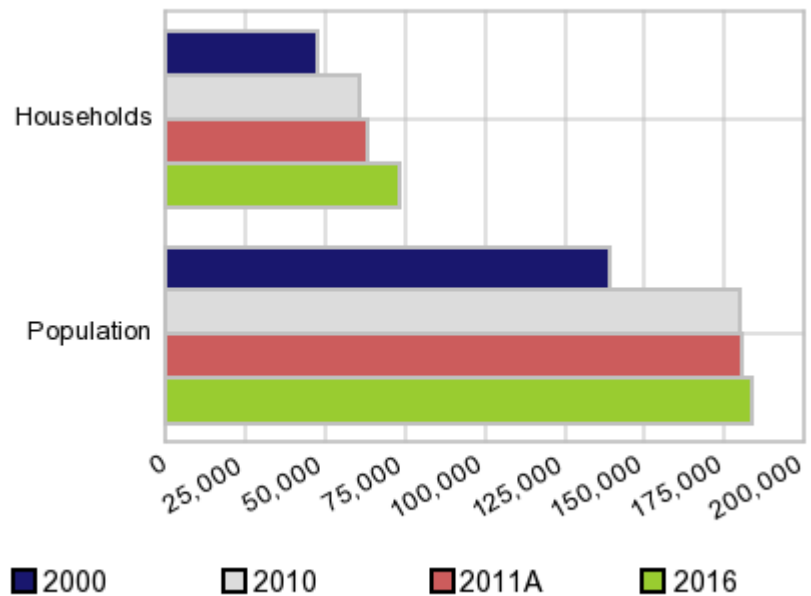
Executive Summary Report with Charts

Population Demographics:

The number of households in the study area in 2000 was **47,392** and changed to **60,691** in 2010, representing a change of **28.1%**. The household count in 2011A was **63,163** and the household projection for 2016 is **73,039**, a change of **15.6%**.

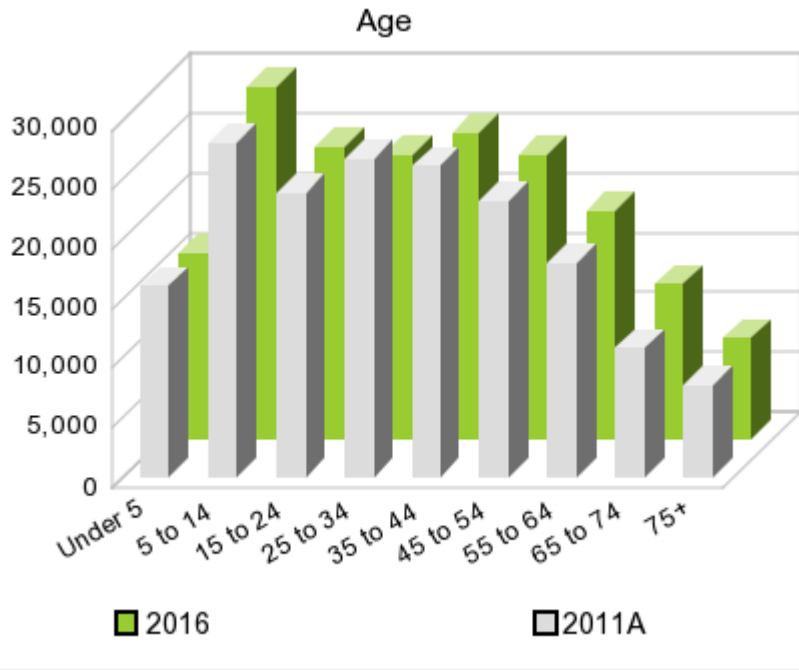
The population in the study area in 2000 was **139,307** and in 2010 it was **179,684**, roughly a **29.0%** change. The population in 2011A was **180,525** and the projection for 2016 is **183,589** representing a change of **1.7%**.

Population and Household Change



	2000 Census	2010 Census	2011A Estimate	2016 Projection	Percent Change	
					2000 to 2010	2011 to 2016
Total Population	139,307	179,684	180,525	183,589	29.0%	1.7%
Total Households	47,392	60,691	63,163	73,039	74.8%	15.6%

Population by Age



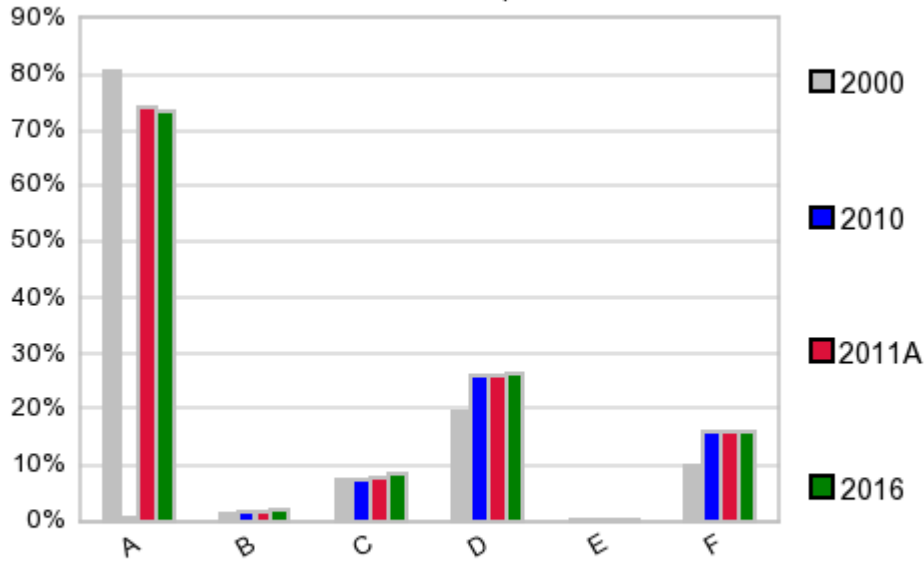
In 1990, the median age of the total population in the study area was **32**, and in 2000, it was **32**. The median age in 2011A is **33** and it is predicted to change in five years to **34** years. In 2011A, females represented **49.5%** of the population with a median age of **34** and males represented **50.5%** of the population with a median age of **33** years. In 2011A, the most prominent age group in this geography is **Age 5 to 14** years. The age group least represented in this geography is **75 +** years.

Age Groups*

	1990		2000		2011A		2016		Percent Change	
	Census	%	Census	%	Estimate	%	Projection	%	1990 to 2000	2011 to 2016
0 to 4	7,163	7.5%	11,417	8.2%	16,013	8.9%	15,513	8.5%	59.4%	-3.1%
5 to 14	13,284	13.9%	20,253	14.5%	28,003	15.5%	29,451	16.0%	52.5%	5.2%
15 to 19	7,168	7.5%	10,140	7.3%	12,294	6.8%	12,746	6.9%	41.5%	3.7%
20 to 24	7,583	7.9%	10,800	7.8%	11,621	6.4%	11,753	6.4%	42.4%	1.1%
25 to 34	17,068	17.9%	23,309	16.7%	26,703	14.8%	23,894	13.0%	36.6%	-10.5%
35 to 44	14,434	15.1%	21,634	15.5%	26,081	14.4%	25,633	14.0%	49.9%	-1.7%
45 to 54	10,505	11.0%	17,331	12.4%	23,214	12.9%	23,896	13.0%	65.0%	2.9%
55 to 64	7,962	8.3%	11,342	8.1%	17,947	9.9%	19,204	10.5%	42.5%	7.0%
65 to 74	6,180	6.5%	7,488	5.4%	10,821	6.0%	12,975	7.1%	21.2%	19.9%
75 +	4,101	4.3%	5,579	4.0%	7,793	4.3%	8,490	4.6%	36.0%	8.9%

Population by Race/Ethnicity

Race and Ethnicity Percent Composition



In 2011A, the predominant race/ethnicity category in this study area is **White**. The race & ethnicity category least represented in this geography is **American Indian, Alaska Native**.

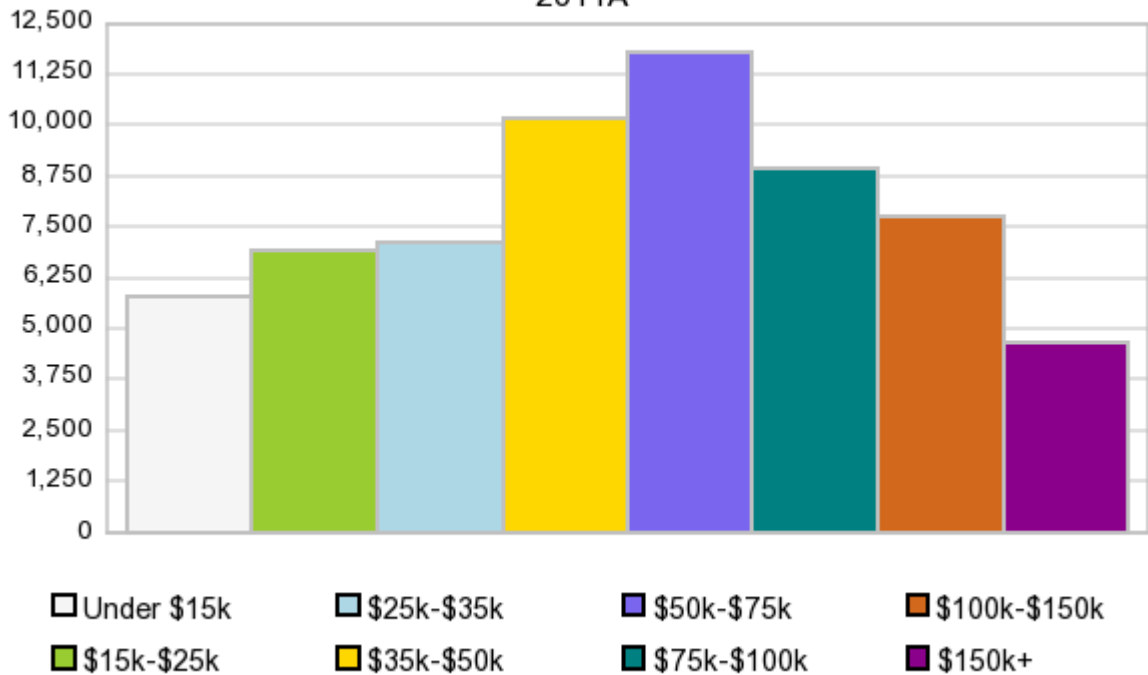
A: White
 B: Asian Pac Islr
 C: Black
 D: Hispanic
 E: Amer Indian or Alaska Native
 F: Other or Multi Race

Race & Ethnicity	2000		2010		2011A		2016		Percent Change	
	Census	%	Census	%	Estimate	%	Projection	%	2000 to 2010	2011 to 2016
White	112,498	80.8%	133,197	74.1%	133,460	73.9%	134,356	73.2%	18.4%	0.7%
Black	10,127	7.3%	13,279	7.4%	13,688	7.6%	15,232	8.3%	31.1%	11.3%
American Indian or Alaska Native	479	0.3%	811	0.5%	813	0.5%	825	0.5%	69.3%	1.5%
Asian/Hawaiian/PI	2,115	1.5%	3,393	1.9%	3,447	1.9%	3,640	2.0%	60.4%	5.6%
Some Other Race	12,193	8.8%	25,042	13.9%	24,613	13.6%	24,844	13.5%	105.4%	0.9%
Two or More Races	1,896	1.4%	3,962	2.2%	4,510	2.5%	4,683	2.6%	109.0%	3.8%
Hispanic Ethnicity	27,244	19.6%	46,906	26.1%	47,298	26.2%	48,757	26.6%	72.2%	3.1%
Not Hispanic or Latino	112,063	80.4%	132,778	73.9%	133,228	73.8%	134,831	73.4%	18.5%	1.2%

Households by Income

Households by Income Group 2011A

In 2011A the predominant household income category in this study area is **\$50K - \$75K**, and the income group that is least represented in this geography is **\$150K +**.



HH Income Categories*

HH Income Categories*	1990 Census		2000 Census		2011A Estimate		2016 Projection		Percent Change	
		%		%		%		%	1990 to 2000	2011 to 2016
\$0 - \$15,000	7,671	22.1%	6,204	13.1%	5,788	9.2%	5,771	7.9%	-19.1%	-0.3%
\$15,000 - \$24,999	6,428	18.5%	5,381	11.4%	6,913	10.9%	7,851	10.8%	-16.3%	13.6%
\$25,000 - \$34,999	6,178	17.8%	6,261	13.2%	7,107	11.3%	7,627	10.4%	1.3%	7.3%
\$35,000 - \$49,999	7,059	20.3%	8,630	18.2%	10,169	16.1%	11,107	15.2%	22.3%	9.2%
\$50,000 - \$74,999	4,754	13.7%	10,334	21.8%	11,791	18.7%	12,812	17.5%	117.4%	8.7%
\$75,000 - \$99,999	1,404	4.0%	5,384	11.4%	8,924	14.1%	11,122	15.2%	283.5%	24.6%
\$100,000 - \$149,999	696	2.0%	3,346	7.1%	7,793	12.3%	10,466	14.3%	380.7%	34.3%
\$150,000 +	518	1.5%	1,854	3.9%	4,666	7.4%	6,270	8.6%	257.9%	34.4%
Average Hhld Income	\$36,451		\$56,985		\$69,892		\$78,253		56.3%	12.0%
Median Hhld Income	\$29,885		\$44,919		\$52,881		\$58,768		50.3%	11.1%
Per Capita Income	\$13,331		\$19,386		\$25,201		\$31,985		45.4%	26.9%

*This Census 2010 data has not yet been released

Current year data is for the year **2011**, 5 year projected data is for the year **2016**. More About Our Data.
Demographic data ' 2011 by Experian/Applied Geographic Solutions.

Business List data ' 2011 by D&B^{fi}. All rights reserved. All D&B information is powered by DUNSRight™, D&B's Quality Process.

' 2011. DDR is brought to you by Alteryx, Inc.

Alteryx, DemographicsNow.com and the Alteryx and DemographicsNow.com logos are trademarks of Alteryx, Inc. All rights reserved.

Privacy Statement | License Agreement