



Date: 04/23/12

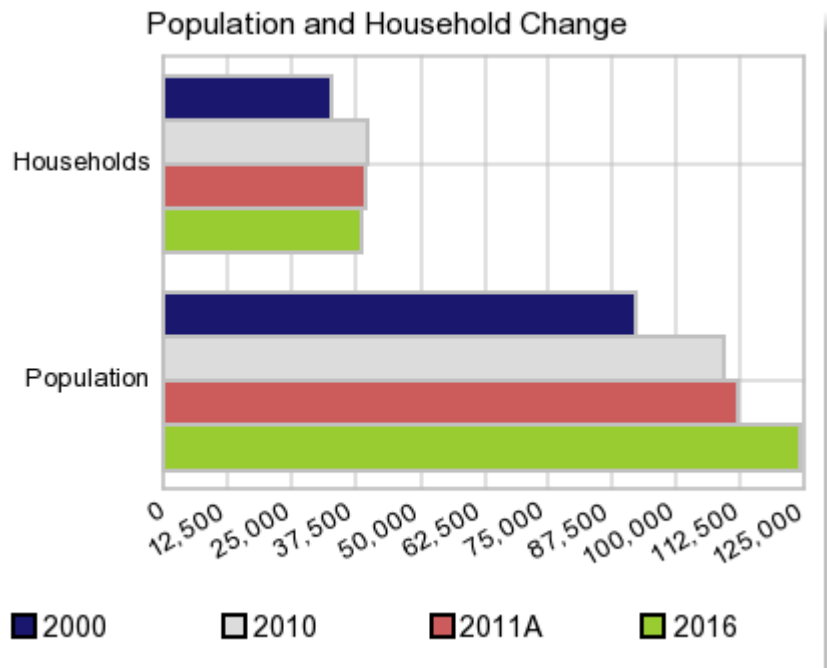
Current Geography Selection: (1 Selected) Counties: Lowndes County

Executive Summary Report with Charts

Population Demographics:

The number of households in the study area in 2000 was **32,654** and changed to **39,747** in 2010, representing a change of **21.7%**. The household count in 2011A was **39,554** and the household projection for 2016 is **38,798**, a change of **-1.9%**.

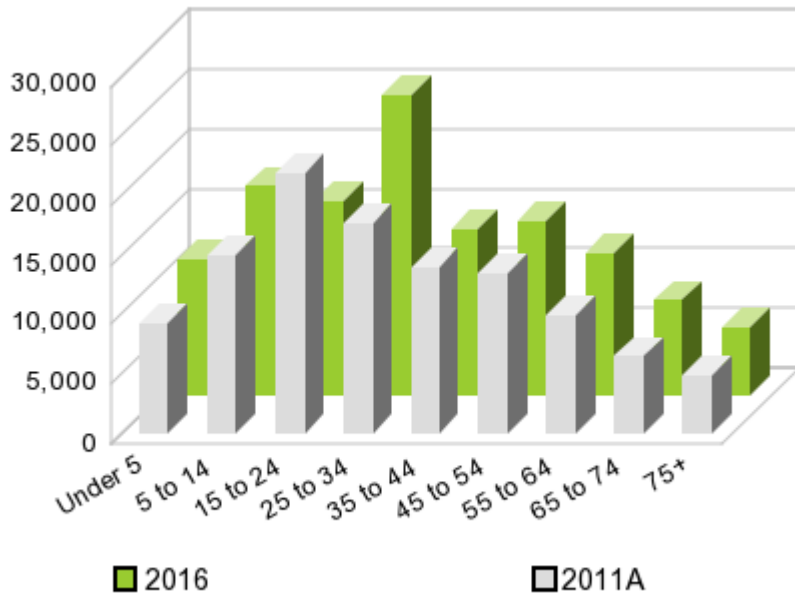
The population in the study area in 2000 was **92,115** and in 2010 it was **109,233**, roughly a **18.6%** change. The population in 2011A was **112,269** and the projection for 2016 is **124,221** representing a change of **10.6%**.



	2000 Census	2010 Census	2011A Estimate	2016 Projection	Percent Change	
					2000 to 2010	2011 to 2016
Total Population	92,115	109,233	112,269	124,221	18.6%	10.6%
Total Households	32,654	39,747	39,554	38,798	51.1%	-1.9%

Population by Age

Age



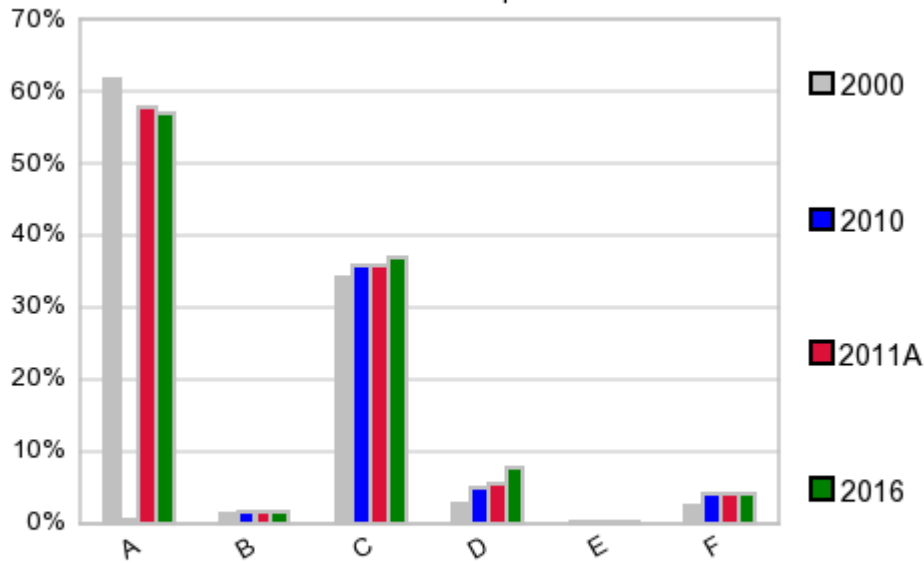
In 1990, the median age of the total population in the study area was **29**, and in 2000, it was **30**. The median age in 2011A is **30** and it is predicted to change in five years to **31** years. In 2011A, females represented **50.8%** of the population with a median age of **30** and males represented **49.2%** of the population with a median age of **29** years. In 2011A, the most prominent age group in this geography is **Age 25 to 34** years. The age group least represented in this geography is **75 +** years.

Age Groups*

Age Groups*	1990 Census		2000 Census		2011A Estimate		2016 Projection		Percent Change	
	Count	%	Count	%	Count	%	Count	%	1990 to 2000	2011 to 2016
0 to 4	6,196	8.2%	6,593	7.2%	9,255	8.2%	11,336	9.1%	6.4%	22.5%
5 to 14	11,694	15.4%	13,711	14.9%	14,863	13.2%	17,556	14.1%	17.2%	18.1%
15 to 19	6,695	8.8%	7,440	8.1%	8,487	7.6%	7,434	6.0%	11.1%	-12.4%
20 to 24	7,906	10.4%	10,290	11.2%	13,368	11.9%	8,703	7.0%	30.2%	-34.9%
25 to 34	13,441	17.7%	14,642	15.9%	17,695	15.8%	25,195	20.3%	8.9%	42.4%
35 to 44	10,674	14.0%	14,168	15.4%	13,907	12.4%	13,943	11.2%	32.7%	0.3%
45 to 54	6,858	9.0%	10,466	11.4%	13,531	12.1%	14,623	11.8%	52.6%	8.1%
55 to 64	5,277	6.9%	6,534	7.1%	9,871	8.8%	11,831	9.5%	23.8%	19.9%
65 to 74	4,261	5.6%	4,613	5.0%	6,406	5.7%	7,884	6.3%	8.3%	23.1%
75 +	2,994	3.9%	3,658	4.0%	4,850	4.3%	5,704	4.6%	22.2%	17.6%

Population by Race/Ethnicity

Race and Ethnicity Percent Composition



In 2011A, the predominant race/ethnicity category in this study area is **White**. The race & ethnicity category least represented in this geography is **American Indian, Alaska Native**.

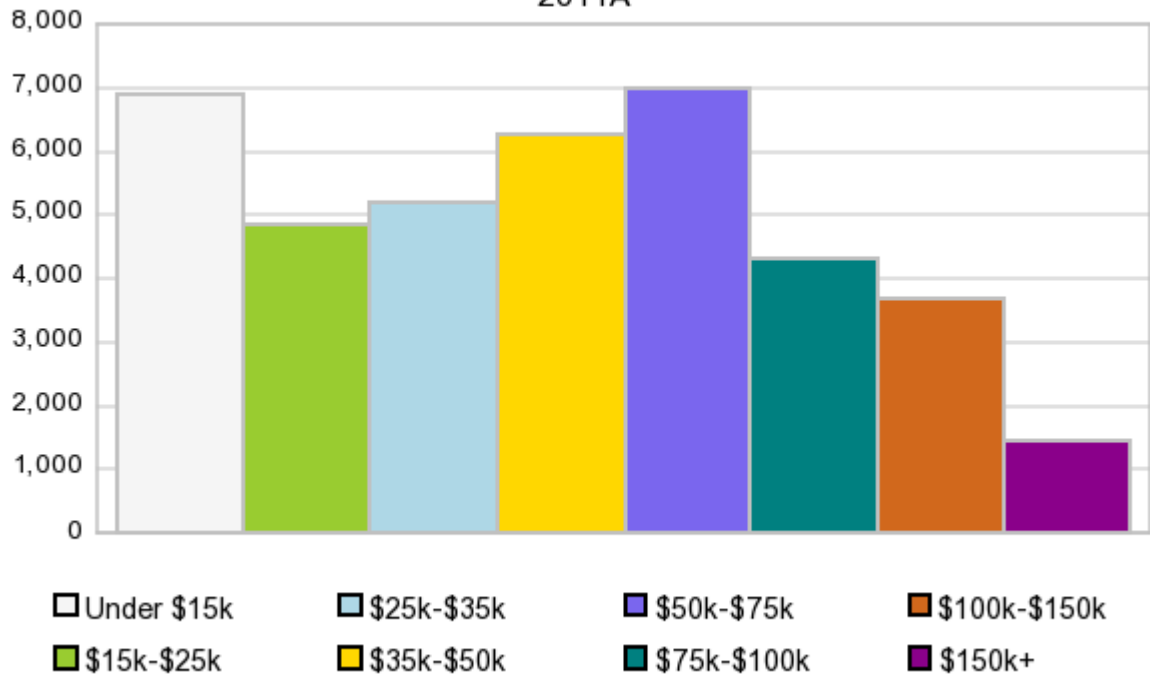
A: White
 B: Asian Pac Islr
 C: Black
 D: Hispanic
 E: Amer Indian or Alaska Native
 F: Other or Multi Race

Race & Ethnicity	2000		2010		2011A		2016		Percent Change	
	Census	%	Census	%	Estimate	%	Projection	%	2000 to 2010	2011 to 2016
White	57,112	62.0%	63,485	58.1%	64,971	57.9%	70,754	57.0%	11.2%	8.9%
Black	31,309	34.0%	39,142	35.8%	40,494	36.1%	45,871	36.9%	25.0%	13.3%
American Indian or Alaska Native	343	0.4%	416	0.4%	427	0.4%	468	0.4%	21.3%	9.6%
Asian/Hawaiian/PI	1,143	1.2%	1,713	1.6%	1,772	1.6%	2,010	1.6%	49.9%	13.4%
Some Other Race	991	1.1%	2,165	2.0%	1,917	1.7%	2,133	1.7%	118.5%	11.3%
Two or More Races	1,217	1.3%	2,312	2.1%	2,691	2.4%	2,988	2.4%	90.0%	11.0%
Hispanic Ethnicity	2,447	2.7%	5,238	4.8%	6,147	5.5%	9,748	7.9%	114.1%	58.6%
Not Hispanic or Latino	89,668	97.3%	103,995	95.2%	106,122	94.5%	114,476	92.2%	16.0%	7.9%

Households by Income

Households by Income Group 2011A

In 2011A the predominant household income category in this study area is **\$50K - \$75K**, and the income group that is least represented in this geography is **\$150K +**.



HH Income Categories*

	1990		2000		2011A		2016		Percent Change	
	Census	%	Census	%	Estimate	%	Projection	%	1990 to 2000	2011 to 2016
\$0 - \$15,000	8,561	32.5%	7,355	22.5%	6,867	17.4%	6,072	15.7%	-14.1%	-11.6%
\$15,000 - \$24,999	5,289	20.1%	5,204	15.9%	4,832	12.2%	4,247	10.9%	-1.6%	-12.1%
\$25,000 - \$34,999	4,427	16.8%	4,778	14.6%	5,190	13.1%	4,868	12.5%	7.9%	-6.2%
\$35,000 - \$49,999	3,918	14.9%	5,430	16.6%	6,267	15.8%	5,999	15.5%	38.6%	-4.3%
\$50,000 - \$74,999	2,823	10.7%	5,371	16.4%	7,003	17.7%	7,016	18.1%	90.3%	0.2%
\$75,000 - \$99,999	661	2.5%	2,369	7.3%	4,299	10.9%	4,771	12.3%	258.4%	11.0%
\$100,000 - \$149,999	338	1.3%	1,363	4.2%	3,662	9.3%	4,255	11.0%	303.3%	16.2%
\$150,000 +	269	1.0%	784	2.4%	1,437	3.6%	1,573	4.1%	191.5%	9.5%
Average Hhld Income	\$30,569		\$43,343		\$54,471		\$60,814		41.8%	11.6%
Median Hhld Income	\$23,314		\$32,682		\$40,895		\$44,846		40.2%	9.7%
Per Capita Income	\$10,903		\$15,365		\$21,400		\$21,312		40.9%	-0.4%

*This Census 2010 data has not yet been released

Current year data is for the year **2011**, 5 year projected data is for the year **2016**. More About Our Data.
Demographic data ' 2011 by Experian/Applied Geographic Solutions.

Business List data ' 2011 by D&B^{fi}. All rights reserved. All D&B information is powered by DUNSRight™, D&B's Quality Process.

' 2011. DDR is brought to you by Alteryx, Inc.

Alteryx, DemographicsNow.com and the Alteryx and DemographicsNow.com logos are trademarks of Alteryx, Inc. All rights reserved.

Privacy Statement | License Agreement