



Date: 04/23/12

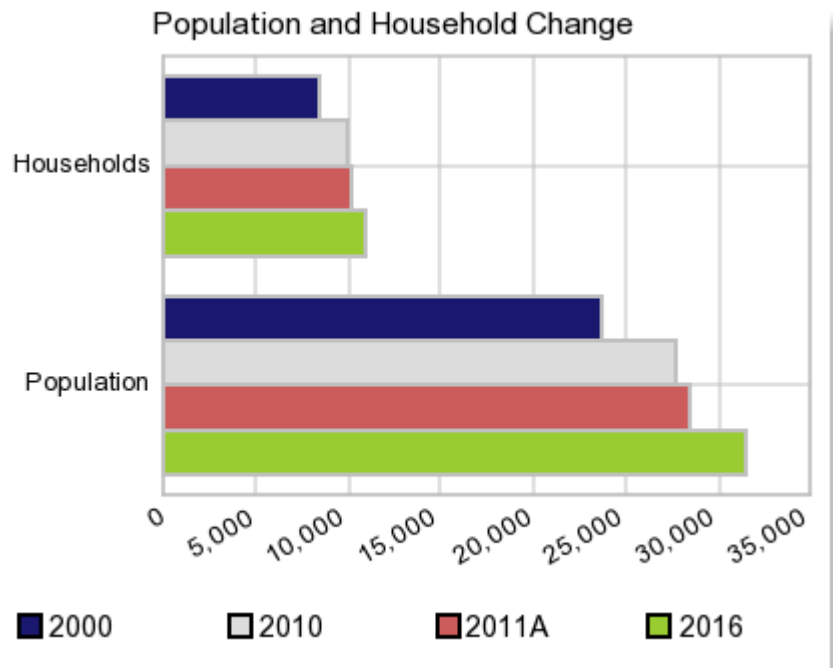
Current Geography Selection: (1 Selected) Counties: Peach County

## Executive Summary Report with Charts

### Population Demographics:

The number of households in the study area in 2000 was **8,436** and changed to **9,958** in 2010, representing a change of **18.0%**. The household count in 2011A was **10,171** and the household projection for 2016 is **10,964**, a change of **7.8%**.

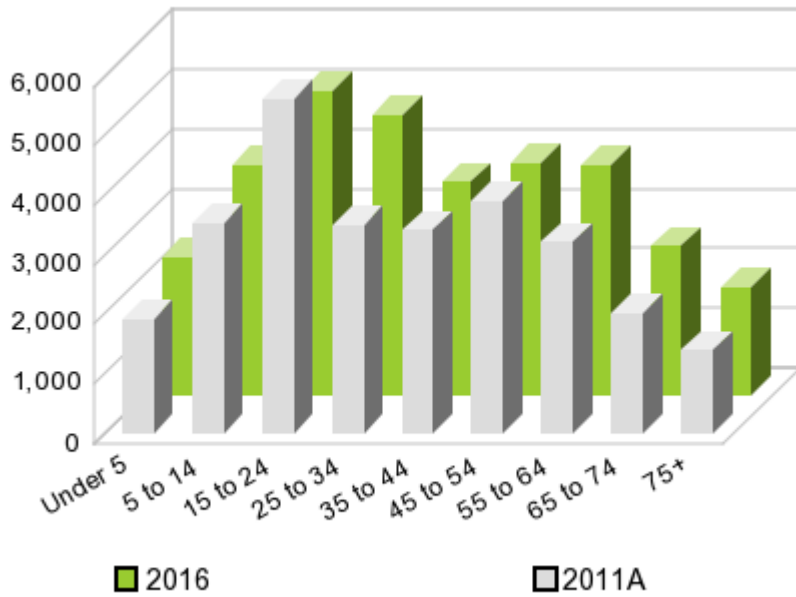
The population in the study area in 2000 was **23,668** and in 2010 it was **27,695**, roughly a **17.0%** change. The population in 2011A was **28,514** and the projection for 2016 is **31,552** representing a change of **10.7%**.



	2000 Census	2010 Census	2011A Estimate	2016 Projection	Percent Change	
					2000 to 2010	2011 to 2016
Total Population	23,668	27,695	28,514	31,552	17.0%	10.7%
Total Households	8,436	9,958	10,171	10,964	39.4%	7.8%

### Population by Age

### Age



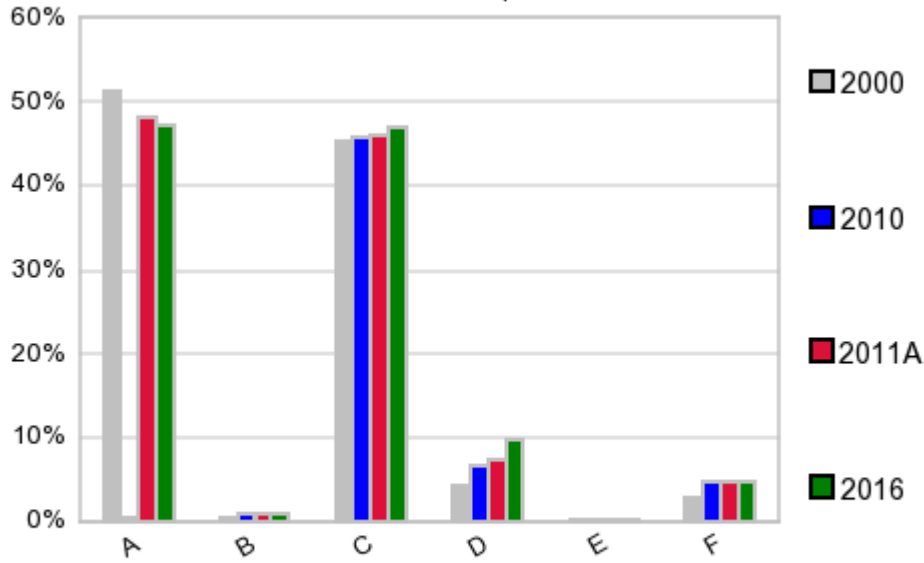
In 1990, the median age of the total population in the study area was **30**, and in 2000, it was **32**. The median age in 2011A is **34** and it is predicted to change in five years to **35** years. In 2011A, females represented **51.7%** of the population with a median age of **36** and males represented **48.3%** of the population with a median age of **32** years. In 2011A, the most prominent age group in this geography is **Age 45 to 54** years. The age group least represented in this geography is **75 +** years.

### Age Groups\*

Age Groups*	1990 Census		2000 Census		2011A Estimate		2016 Projection		Percent Change	
	Census	%	Census	%	Estimate	%	Projection	%	1990 to 2000	2011 to 2016
0 to 4	1,504	7.1%	1,531	6.5%	1,928	6.8%	2,305	7.3%	1.8%	19.6%
5 to 14	3,282	15.5%	3,543	15.0%	3,540	12.4%	3,862	12.2%	8.0%	9.1%
15 to 19	2,097	9.9%	2,109	8.9%	2,990	10.5%	1,934	6.1%	0.6%	-35.3%
20 to 24	2,090	9.9%	2,508	10.6%	2,627	9.2%	3,158	10.0%	20.0%	20.2%
25 to 34	3,264	15.4%	3,120	13.2%	3,500	12.3%	4,689	14.9%	-4.4%	34.0%
35 to 44	2,889	13.6%	3,379	14.3%	3,396	11.9%	3,572	11.3%	17.0%	5.2%
45 to 54	2,189	10.3%	3,016	12.7%	3,886	13.6%	3,881	12.3%	37.8%	-0.1%
55 to 64	1,760	8.3%	2,131	9.0%	3,226	11.3%	3,856	12.2%	21.1%	19.5%
65 to 74	1,268	6.0%	1,381	5.8%	2,019	7.1%	2,492	7.9%	8.9%	23.4%
75 +	846	4.0%	950	4.0%	1,392	4.9%	1,801	5.7%	12.3%	29.4%

### Population by Race/Ethnicity

### Race and Ethnicity Percent Composition



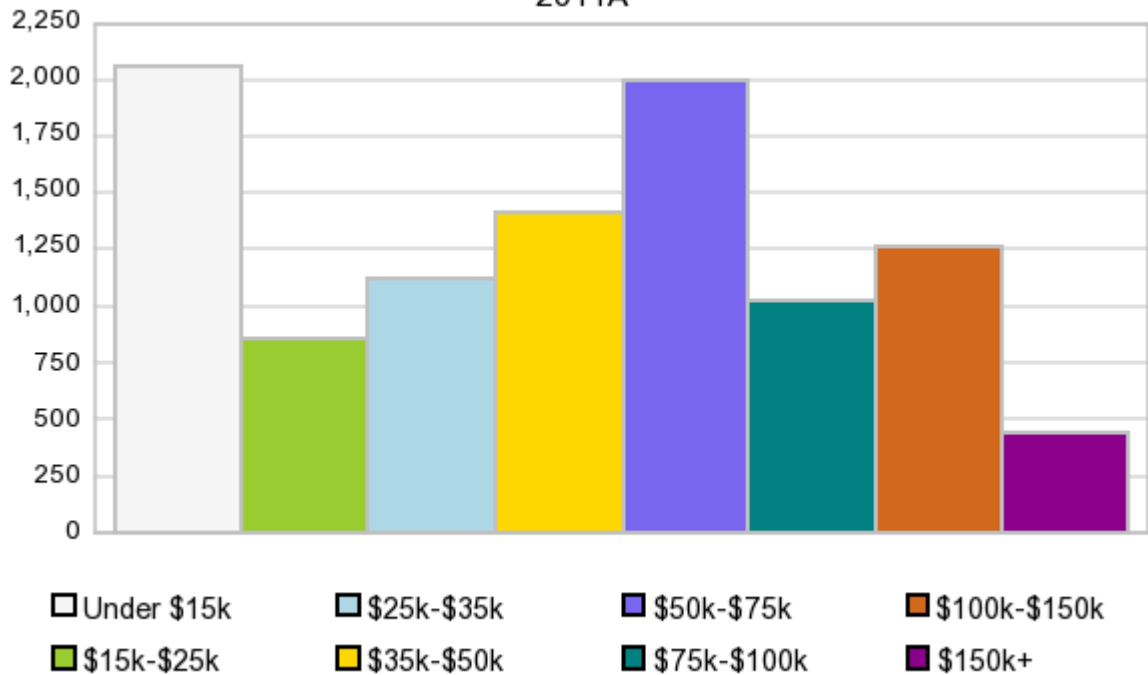
In 2011A, the predominant race/ethnicity category in this study area is **White**. The race & ethnicity category least represented in this geography is **American Indian, Alaska Native**.

A: White  
 B: Asian Pac Islr  
 C: Black  
 D: Hispanic  
 E: Amer Indian or Alaska Native  
 F: Other or Multi Race

Race & Ethnicity	2000		2010		2011A		2016		Percent Change	
	Census	%	Census	%	Estimate	%	Projection	%	2000 to 2010	2011 to 2016
White	12,135	51.3%	13,383	48.3%	13,726	48.1%	14,901	47.2%	10.3%	8.6%
Black	10,738	45.4%	12,715	45.9%	13,148	46.1%	14,829	47.0%	18.4%	12.8%
American Indian or Alaska Native	77	0.3%	67	0.2%	70	0.3%	75	0.2%	-13.0%	7.1%
Asian/Hawaiian/PI	86	0.4%	231	0.8%	239	0.8%	274	0.9%	168.6%	14.6%
Some Other Race	433	1.8%	874	3.2%	864	3.0%	944	3.0%	101.8%	9.3%
Two or More Races	199	0.8%	425	1.5%	470	1.7%	529	1.7%	113.6%	12.6%
Hispanic Ethnicity	998	4.2%	1,890	6.8%	2,126	7.5%	3,059	9.7%	89.4%	43.9%
Not Hispanic or Latino	22,670	95.8%	25,805	93.2%	26,389	92.6%	28,491	90.3%	13.8%	8.0%

### Households by Income

## Households by Income Group 2011A



In 2011A the predominant household income category in this study area is **\$0 - \$15K**, and the income group that is least represented in this geography is **\$150K +**.

### HH Income Categories\*

HH Income Categories*	1990 Census		2000 Census		2011A Estimate		2016 Projection		Percent Change	
		%		%		%		%	1990 to 2000	2011 to 2016
\$0 - \$15,000	2,327	32.6%	2,017	23.9%	2,060	20.3%	2,035	18.6%	-13.3%	-1.2%
\$15,000 - \$24,999	1,137	15.9%	1,178	14.0%	855	8.4%	767	7.0%	3.6%	-10.3%
\$25,000 - \$34,999	1,134	15.9%	1,069	12.7%	1,123	11.0%	1,128	10.3%	-5.7%	0.4%
\$35,000 - \$49,999	1,167	16.3%	1,297	15.4%	1,414	13.9%	1,442	13.2%	11.1%	2.0%
\$50,000 - \$74,999	983	13.8%	1,487	17.6%	2,001	19.7%	2,241	20.4%	51.3%	12.0%
\$75,000 - \$99,999	237	3.3%	817	9.7%	1,022	10.1%	1,059	9.7%	244.7%	3.6%
\$100,000 - \$149,999	93	1.3%	434	5.1%	1,262	12.4%	1,706	15.6%	366.7%	35.2%
\$150,000 +	76	1.1%	137	1.6%	434	4.3%	585	5.3%	80.3%	34.8%
Average Hhld Income	\$32,561		\$44,279		\$58,264		\$63,934		36.0%	9.7%
Median Hhld Income	\$25,855		\$34,491		\$46,832		\$51,140		33.4%	9.2%
Per Capita Income	\$11,120		\$15,782		\$23,293		\$24,850		41.9%	6.7%

\*This Census 2010 data has not yet been released

Current year data is for the year **2011**, 5 year projected data is for the year **2016**. More About Our Data.  
Demographic data ' 2011 by Experian/Applied Geographic Solutions.

Business List data ' 2011 by D&B<sup>fi</sup>. All rights reserved. All D&B information is powered by DUNSRight™, D&B's Quality Process.

**' 2011. DDR is brought to you by Alteryx, Inc.**

Alteryx, DemographicsNow.com and the Alteryx and DemographicsNow.com logos are trademarks of Alteryx, Inc. All rights reserved.

Privacy Statement | License Agreement