



Date: 04/23/12

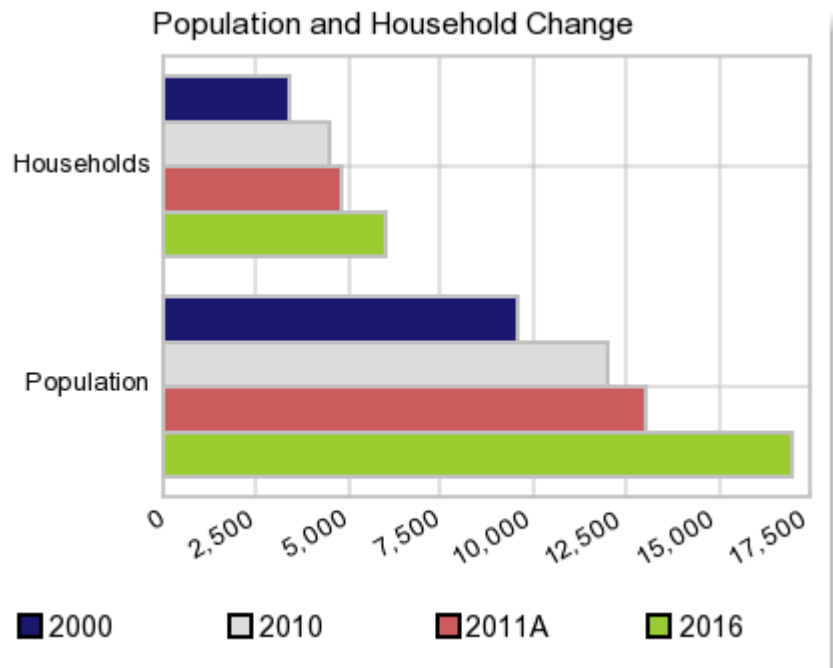
Current Geography Selection: (1 Selected) Counties: Pulaski County

Executive Summary Report with Charts

Population Demographics:

The number of households in the study area in 2000 was **3,407** and changed to **4,475** in 2010, representing a change of **31.3%**. The household count in 2011A was **4,780** and the household projection for 2016 is **5,993**, a change of **25.4%**.

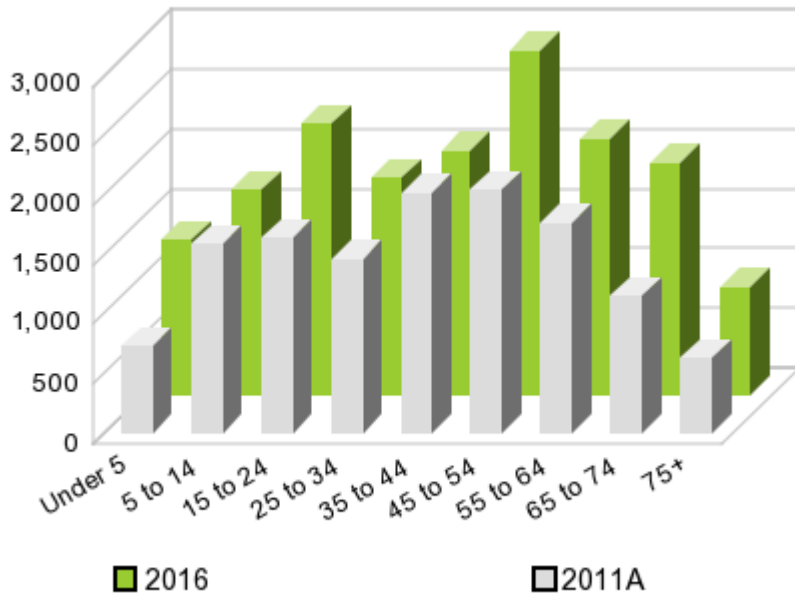
The population in the study area in 2000 was **9,588** and in 2010 it was **12,010**, roughly a **25.3%** change. The population in 2011A was **13,023** and the projection for 2016 is **17,029** representing a change of **30.8%**.



	2000 Census	2010 Census	2011A Estimate	2016 Projection	Percent Change	
					2000 to 2010	2011 to 2016
Total Population	9,588	12,010	13,023	17,029	25.3%	30.8%
Total Households	3,407	4,475	4,780	5,993	44.4%	25.4%

Population by Age

Age



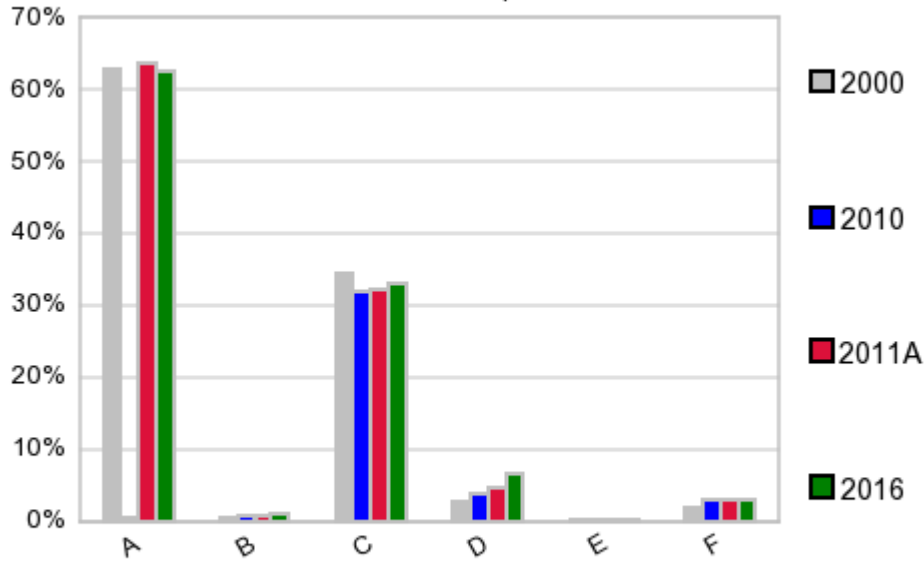
In 1990, the median age of the total population in the study area was **35**, and in 2000, it was **37**. The median age in 2011A is **41** and it is predicted to change in five years to **42** years. In 2011A, females represented **57.3%** of the population with a median age of **42** and males represented **42.7%** of the population with a median age of **40** years. In 2011A, the most prominent age group in this geography is **Age 45 to 54** years. The age group least represented in this geography is **75 +** years.

Age Groups*

	1990		2000		2011A		2016		Percent Change	
	Census	%	Census	%	Estimate	%	Projection	%	1990 to 2000	2011 to 2016
0 to 4	541	6.7%	613	6.4%	729	5.6%	1,294	7.6%	13.3%	77.5%
5 to 14	1,261	15.6%	1,215	12.7%	1,589	12.2%	1,720	10.1%	-3.6%	8.2%
15 to 19	625	7.7%	667	7.0%	865	6.6%	1,200	7.1%	6.7%	38.7%
20 to 24	472	5.8%	613	6.4%	765	5.9%	1,075	6.3%	29.9%	40.5%
25 to 34	1,127	13.9%	1,425	14.9%	1,452	11.2%	1,811	10.6%	26.4%	24.7%
35 to 44	1,096	13.5%	1,550	16.2%	2,013	15.5%	2,037	12.0%	41.4%	1.2%
45 to 54	914	11.3%	1,288	13.4%	2,042	15.7%	2,887	17.0%	40.9%	41.4%
55 to 64	814	10.0%	945	9.9%	1,775	13.6%	2,134	12.5%	16.1%	20.2%
65 to 74	702	8.7%	673	7.0%	1,156	8.9%	1,951	11.5%	-4.1%	68.8%
75 +	556	6.9%	599	6.2%	631	4.8%	914	5.4%	7.7%	44.9%

Population by Race/Ethnicity

Race and Ethnicity Percent Composition



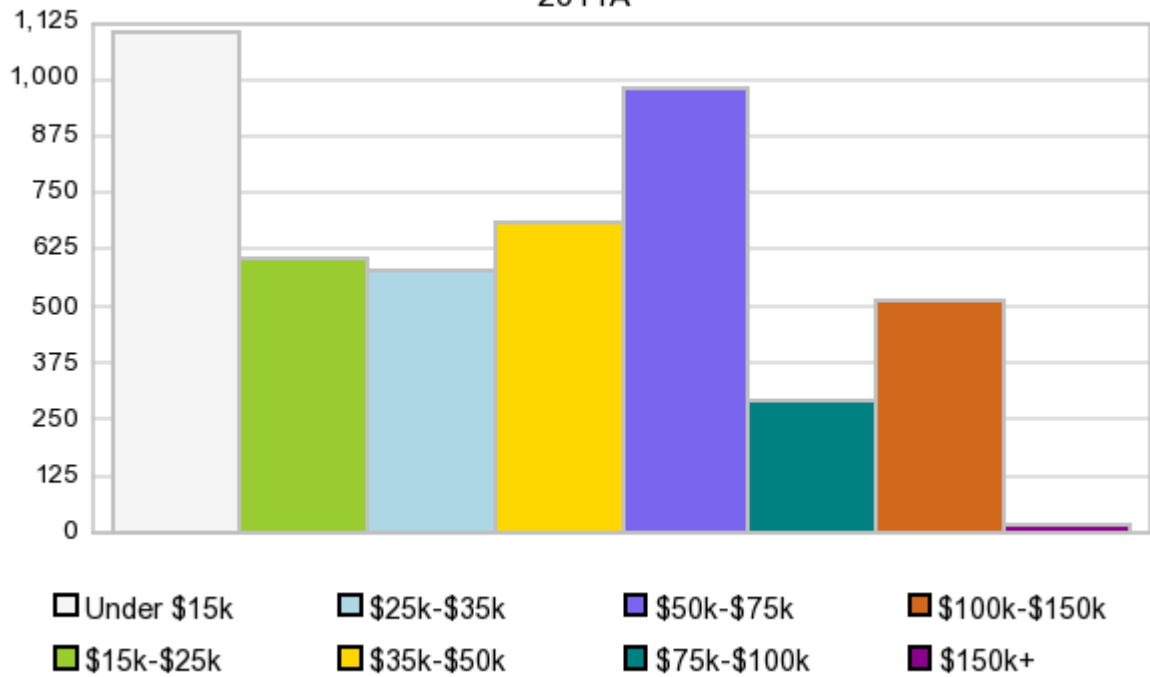
In 2011A, the predominant race/ethnicity category in this study area is **White**. The race & ethnicity category least represented in this geography is **American Indian, Alaska Native**.

A: White
 B: Asian Pac Islr
 C: Black
 D: Hispanic
 E: Amer Indian or Alaska Native
 F: Other or Multi Race

Race & Ethnicity	2000 Census		2010 Census		2011A Estimate		2016 Projection		Percent Change	
	Count	%	Count	%	Count	%	Count	%	2000 to 2010	2011 to 2016
White	6,041	63.0%	7,679	63.9%	8,293	63.7%	10,683	62.7%	27.1%	28.8%
Black	3,287	34.3%	3,824	31.8%	4,177	32.1%	5,608	32.9%	16.3%	34.3%
American Indian or Alaska Native	25	0.3%	40	0.3%	43	0.3%	56	0.3%	60.0%	30.2%
Asian/Hawaiian/PI	45	0.5%	110	0.9%	122	0.9%	168	1.0%	144.4%	37.7%
Some Other Race	111	1.2%	234	1.9%	221	1.7%	293	1.7%	110.8%	32.6%
Two or More Races	79	0.8%	123	1.0%	167	1.3%	221	1.3%	55.7%	32.3%
Hispanic Ethnicity	270	2.8%	465	3.9%	590	4.5%	1,089	6.4%	72.2%	84.6%
Not Hispanic or Latino	9,318	97.2%	11,545	96.1%	12,433	95.5%	15,940	93.6%	23.9%	28.2%

Households by Income

Households by Income Group 2011A



In 2011A the predominant household income category in this study area is **\$0 - \$15K**, and the income group that is least represented in this geography is **\$150K +**.

HH Income Categories*

HH Income Categories*	1990 Census		2000 Census		2011A Estimate		2016 Projection		Percent Change	
		%		%		%		%	1990 to 2000	2011 to 2016
\$0 - \$15,000	1,289	41.6%	779	22.9%	1,105	23.1%	1,353	22.6%	-39.6%	22.4%
\$15,000 - \$24,999	434	14.0%	548	16.1%	605	12.7%	708	11.8%	26.3%	17.0%
\$25,000 - \$34,999	349	11.3%	552	16.2%	580	12.1%	620	10.3%	58.2%	6.9%
\$35,000 - \$49,999	437	14.1%	479	14.1%	681	14.2%	904	15.1%	9.6%	32.7%
\$50,000 - \$74,999	389	12.6%	613	18.0%	985	20.6%	1,219	20.3%	57.6%	23.8%
\$75,000 - \$99,999	138	4.5%	228	6.7%	293	6.1%	341	5.7%	65.2%	16.4%
\$100,000 - \$149,999	17	0.5%	98	2.9%	511	10.7%	831	13.9%	476.5%	62.6%
\$150,000 +	44	1.4%	110	3.2%	19	0.4%	16	0.3%	150.0%	-15.8%
Average Hhld Income	\$29,326		\$44,119		\$45,311		\$48,463		50.4%	7.0%
Median Hhld Income	\$21,329		\$31,962		\$37,020		\$40,710		49.9%	10.0%
Per Capita Income	\$11,205		\$15,677		\$19,446		\$19,555		39.9%	0.6%

*This Census 2010 data has not yet been released

Current year data is for the year **2011**, 5 year projected data is for the year **2016**. More About Our Data.
Demographic data ' 2011 by Experian/Applied Geographic Solutions.

Business List data ' 2011 by D&B^{fi}. All rights reserved. All D&B information is powered by DUNSRightTM, D&B's Quality Process.

' 2011. DDR is brought to you by Alteryx, Inc.

Alteryx, DemographicsNow.com and the Alteryx and DemographicsNow.com logos are trademarks of Alteryx, Inc. All rights reserved.

Privacy Statement | License Agreement