



Date: 04/23/12

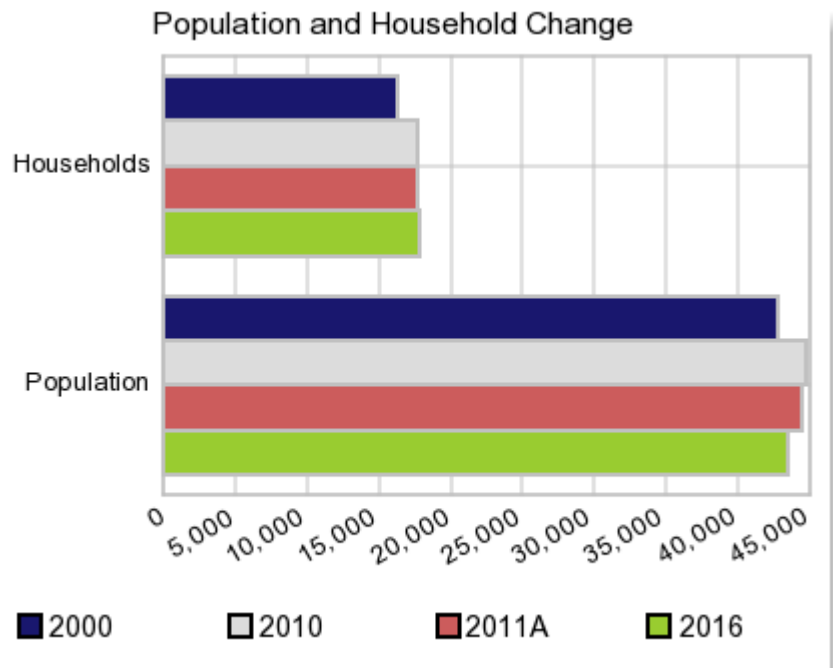
Current Geography Selection: (1 Selected) Counties: Thomas County

Executive Summary Report with Charts

Population Demographics:

The number of households in the study area in 2000 was **16,309** and changed to **17,573** in 2010, representing a change of **7.8%**. The household count in 2011A was **17,615** and the household projection for 2016 is **17,778**, a change of **0.9%**.

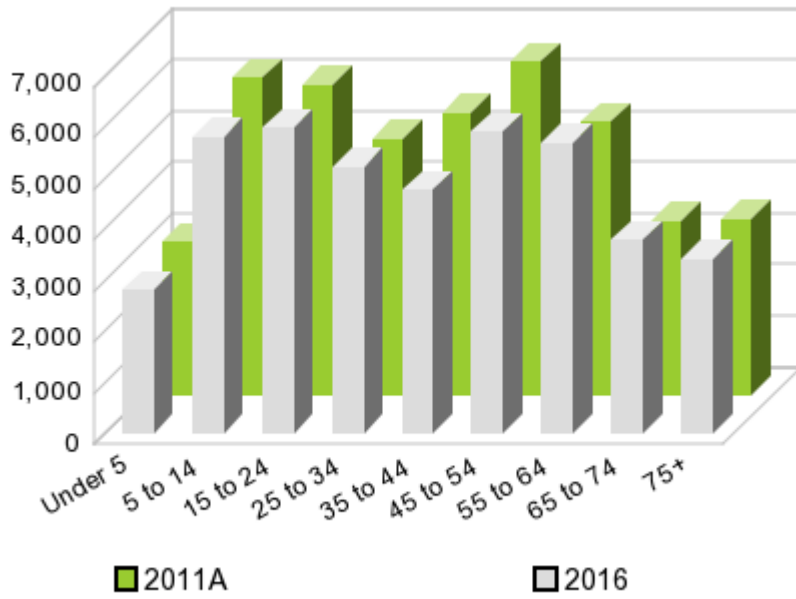
The population in the study area in 2000 was **42,737** and in 2010 it was **44,720**, roughly a **4.6%** change. The population in 2011A was **44,455** and the projection for 2016 is **43,334** representing a change of **-2.5%**.



	2000 Census	2010 Census	2011A Estimate	2016 Projection	Percent Change	
					2000 to 2010	2011 to 2016
Total Population	42,737	44,720	44,455	43,334	4.6%	-2.5%
Total Households	16,309	17,573	17,615	17,778	22.7%	0.9%

Population by Age

Age



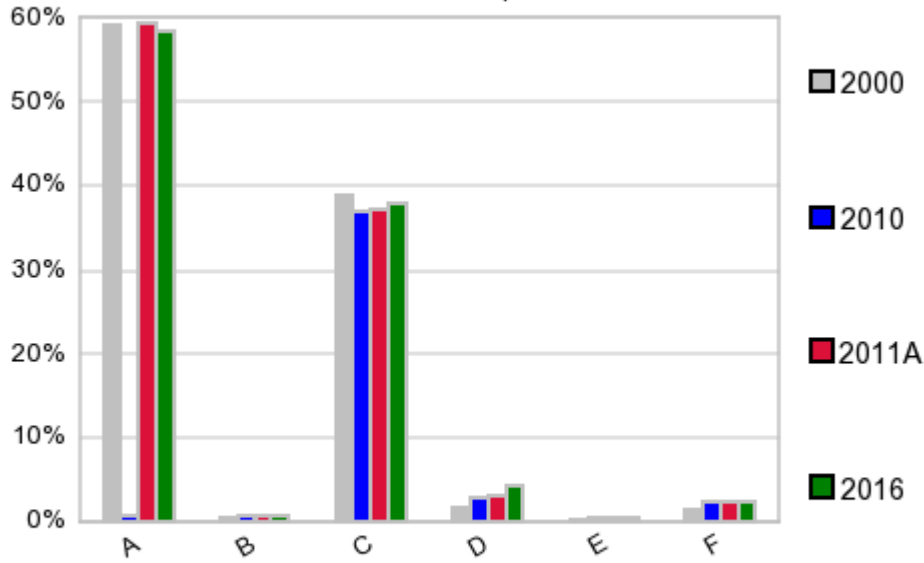
In 1990, the median age of the total population in the study area was **33**, and in 2000, it was **36**. The median age in 2011A is **39** and it is predicted to change in five years to **39** years. In 2011A, females represented **53.1%** of the population with a median age of **41** and males represented **46.9%** of the population with a median age of **36** years. In 2011A, the most prominent age group in this geography is **Age 45 to 54** years. The age group least represented in this geography is **18 to 24** years.

Age Groups*

	1990 Census		2000 Census		2011A Estimate		2016 Projection		Percent Change	
		%		%		%		%	1990 to 2000	2011 to 2016
0 to 4	2,971	7.6%	2,880	6.7%	2,981	6.7%	2,785	6.4%	-3.1%	-6.6%
5 to 14	6,303	16.2%	6,603	15.5%	6,222	14.0%	5,782	13.3%	4.8%	-7.1%
15 to 19	3,031	7.8%	3,246	7.6%	3,161	7.1%	2,981	6.9%	7.1%	-5.7%
20 to 24	2,405	6.2%	2,327	5.4%	2,899	6.5%	3,001	6.9%	-3.2%	3.5%
25 to 34	5,919	15.2%	5,428	12.7%	4,981	11.2%	5,219	12.0%	-8.3%	4.8%
35 to 44	5,406	13.9%	6,604	15.5%	5,531	12.4%	4,760	11.0%	22.2%	-13.9%
45 to 54	4,046	10.4%	5,777	13.5%	6,508	14.6%	5,917	13.7%	42.8%	-9.1%
55 to 64	3,468	8.9%	4,002	9.4%	5,332	12.0%	5,669	13.1%	15.4%	6.3%
65 to 74	3,136	8.0%	3,050	7.1%	3,393	7.6%	3,794	8.8%	-2.7%	11.8%
75 +	2,301	5.9%	2,820	6.6%	3,442	7.7%	3,420	7.9%	22.6%	-0.6%

Population by Race/Ethnicity

Race and Ethnicity Percent Composition



In 2011A, the predominant race/ethnicity category in this study area is **White**. The race & ethnicity category least represented in this geography is **American Indian, Alaska Native**.

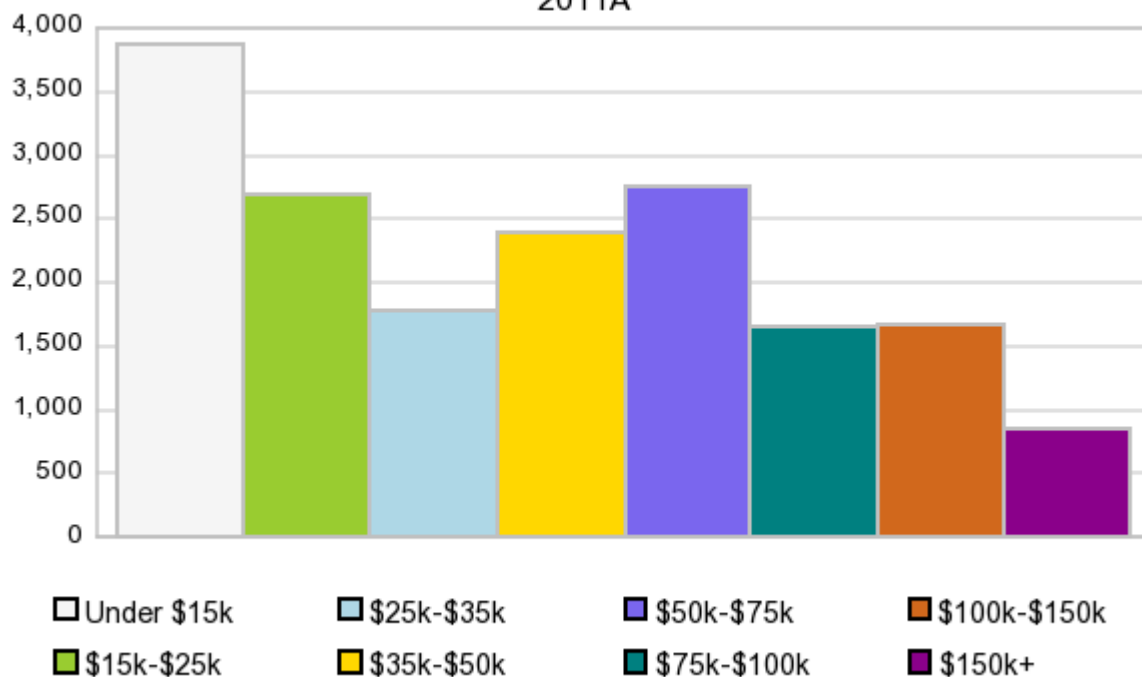
A: White
 B: Asian Pac Islr
 C: Black
 D: Hispanic
 E: Amer Indian or Alaska Native
 F: Other or Multi Race

Race & Ethnicity	2000		2010		2011A		2016		Percent Change	
	Census	%	Census	%	Estimate	%	Projection	%	2000 to 2010	2011 to 2016
White	25,207	59.0%	26,645	59.6%	26,373	59.3%	25,299	58.4%	5.7%	-4.1%
Black	16,607	38.9%	16,497	36.9%	16,504	37.1%	16,467	38.0%	-0.7%	-0.2%
American Indian or Alaska Native	126	0.3%	196	0.4%	195	0.4%	189	0.4%	55.6%	-3.1%
Asian/Hawaiian/PI	200	0.5%	318	0.7%	320	0.7%	328	0.8%	59.0%	2.5%
Some Other Race	232	0.5%	519	1.2%	388	0.9%	387	0.9%	123.7%	-0.3%
Two or More Races	365	0.9%	545	1.2%	675	1.5%	664	1.5%	49.3%	-1.6%
Hispanic Ethnicity	734	1.7%	1,275	2.9%	1,388	3.1%	1,829	4.2%	73.7%	31.8%
Not Hispanic or Latino	42,003	98.3%	43,445	97.1%	43,067	96.9%	41,505	95.8%	3.4%	-3.6%

Households by Income

Households by Income Group 2011A

In 2011A the predominant household income category in this study area is \$0 - \$15K, and the income group that is least represented in this geography is \$150K +.



HH Income Categories*

	1990 Census		2000 Census		2011A Estimate		2016 Projection		Percent Change	
		%		%		%		%	1990 to 2000	2011 to 2016
\$0 - \$15,000	5,267	36.8%	3,989	24.5%	3,863	21.9%	3,703	20.8%	-24.3%	-4.1%
\$15,000 - \$24,999	2,870	20.0%	2,580	15.8%	2,686	15.2%	2,652	14.9%	-10.1%	-1.3%
\$25,000 - \$34,999	2,345	16.4%	2,340	14.3%	1,770	10.0%	1,507	8.5%	-0.2%	-14.9%
\$35,000 - \$49,999	1,824	12.7%	2,756	16.9%	2,379	13.5%	2,159	12.1%	51.1%	-9.2%
\$50,000 - \$74,999	1,383	9.7%	2,694	16.5%	2,754	15.6%	2,687	15.1%	94.8%	-2.4%
\$75,000 - \$99,999	294	2.1%	971	6.0%	1,652	9.4%	1,936	10.9%	230.3%	17.2%
\$100,000 - \$149,999	222	1.6%	676	4.1%	1,665	9.5%	2,072	11.7%	204.5%	24.4%
\$150,000 +	102	0.7%	303	1.9%	846	4.8%	1,062	6.0%	197.1%	25.5%
Average Hhld Income	\$27,784		\$41,838		\$56,753		\$63,248		50.6%	11.4%
Median Hhld Income	\$20,997		\$31,380		\$38,097		\$42,129		49.5%	10.6%
Per Capita Income	\$10,273		\$15,966		\$23,254		\$26,860		55.4%	15.5%

*This Census 2010 data has not yet been released

Current year data is for the year 2011, 5 year projected data is for the year 2016. More About Our Data.
Demographic data ' 2011 by Experian/Applied Geographic Solutions.

Business List data ' 2011 by D&B^{fi}. All rights reserved. All D&B information is powered by DUNSRight™, D&B's Quality Process.

' 2011. DDR is brought to you by Alteryx, Inc.

Alteryx, DemographicsNow.com and the Alteryx and DemographicsNow.com logos are trademarks of Alteryx, Inc. All rights reserved.

Privacy Statement | License Agreement