



Date: 04/23/12

Current Geography Selection: (1 Selected) Counties: Wilkes County

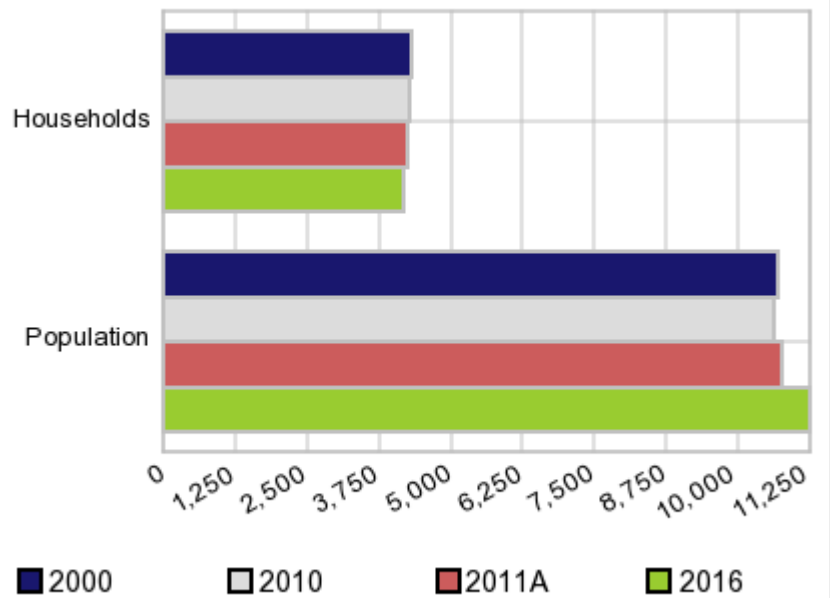
Executive Summary Report with Charts

Population Demographics:

The number of households in the study area in 2000 was **4,314** and changed to **4,263** in 2010, representing a change of **-1.2%**. The household count in 2011A was **4,241** and the household projection for 2016 is **4,151**, a change of **-2.1%**.

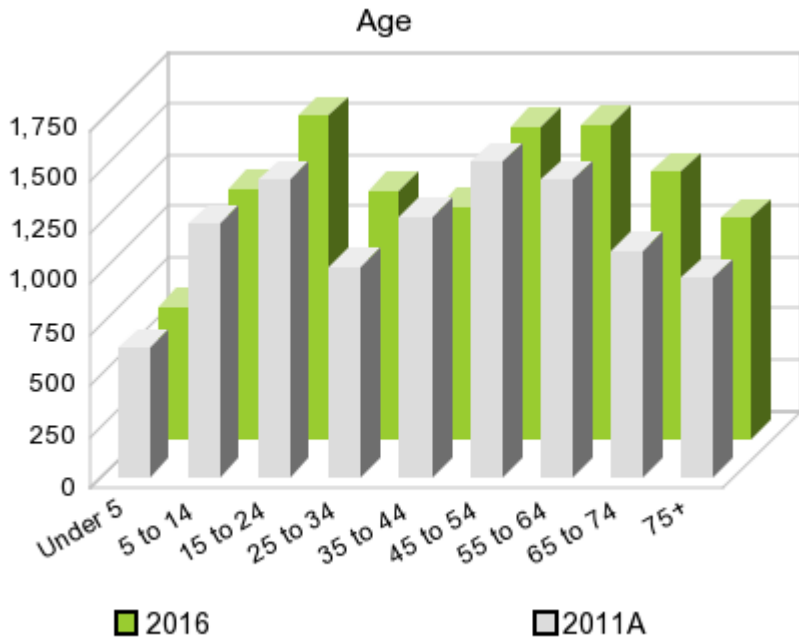
The population in the study area in 2000 was **10,687** and in 2010 it was **10,593**, roughly a **-0.9%** change. The population in 2011A was **10,726** and the projection for 2016 is **11,238** representing a change of **4.8%**.

Population and Household Change



	2000 Census	2010 Census	2011A Estimate	2016 Projection	Percent Change	
					2000 to 2010	2011 to 2016
Total Population	10,687	10,593	10,726	11,238	-0.9%	4.8%
Total Households	4,314	4,263	4,241	4,151	6.0%	-2.1%

Population by Age



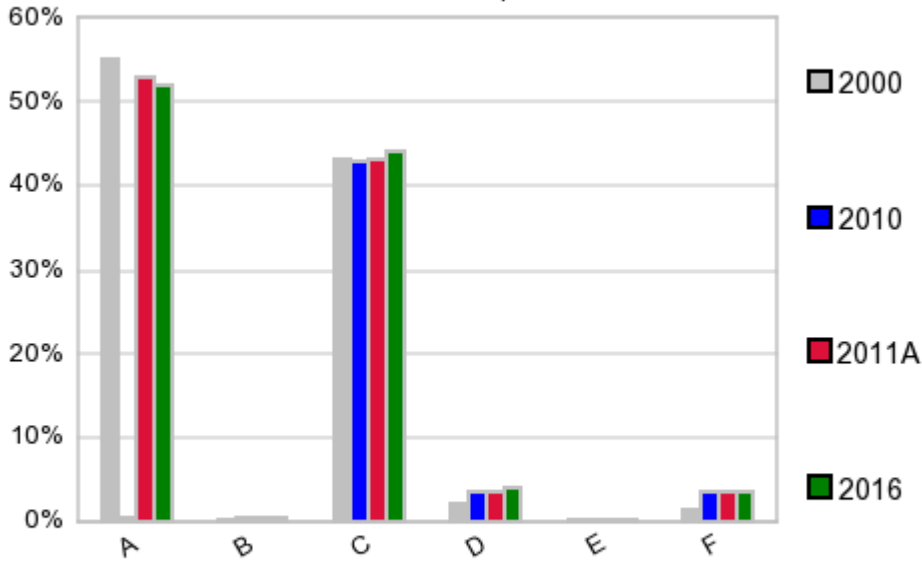
In 1990, the median age of the total population in the study area was **35**, and in 2000, it was **39**. The median age in 2011A is **43** and it is predicted to change in five years to **44** years. In 2011A, females represented **52.8%** of the population with a median age of **45** and males represented **47.2%** of the population with a median age of **41** years. In 2011A, the most prominent age group in this geography is **Age 45 to 54** years. The age group least represented in this geography is **0 to 4** years.

Age Groups*

	1990 Census		2000 Census		2011A Estimate		2016 Projection		Percent Change	
		%		%		%		%	1990 to 2000	2011 to 2016
0 to 4	691	6.5%	623	5.8%	634	5.9%	639	5.7%	-9.8%	0.8%
5 to 14	1,656	15.6%	1,436	13.4%	1,236	11.5%	1,218	10.8%	-13.3%	-1.5%
15 to 19	727	6.9%	814	7.6%	819	7.6%	733	6.5%	12.0%	-10.5%
20 to 24	623	5.9%	548	5.1%	637	5.9%	851	7.6%	-12.0%	33.6%
25 to 34	1,547	14.6%	1,271	11.9%	1,030	9.6%	1,214	10.8%	-17.8%	17.9%
35 to 44	1,424	13.4%	1,586	14.8%	1,273	11.9%	1,133	10.1%	11.4%	-11.0%
45 to 54	1,111	10.5%	1,396	13.1%	1,545	14.4%	1,526	13.6%	25.7%	-1.2%
55 to 64	1,012	9.6%	1,181	11.1%	1,460	13.6%	1,531	13.6%	16.7%	4.9%
65 to 74	1,029	9.7%	921	8.6%	1,110	10.3%	1,310	11.7%	-10.5%	18.0%
75 +	777	7.3%	911	8.5%	976	9.1%	1,078	9.6%	17.2%	10.5%

Population by Race/Ethnicity

Race and Ethnicity Percent Composition



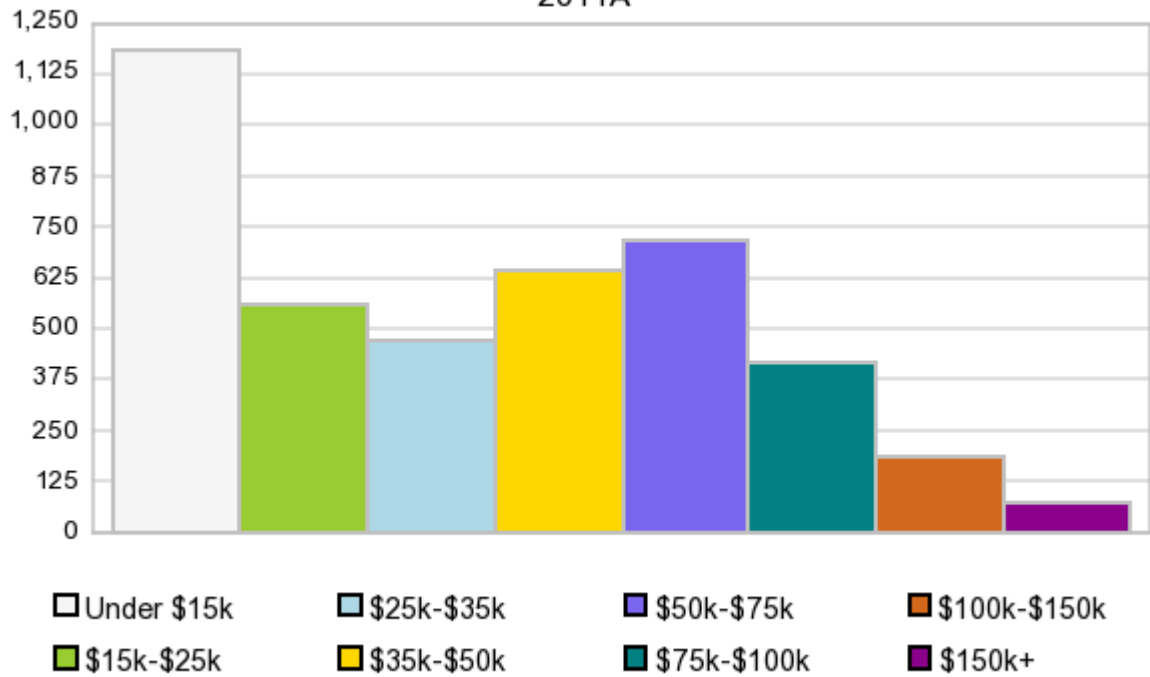
In 2011A, the predominant race/ethnicity category in this study area is **White**. The race & ethnicity category least represented in this geography is **American Indian, Alaska Native**.

A: White
 B: Asian Pac Islr
 C: Black
 D: Hispanic
 E: Amer Indian or Alaska Native
 F: Other or Multi Race

Race & Ethnicity	2000		2010		2011A		2016		Percent Change	
	Census	%	Census	%	Estimate	%	Projection	%	2000 to 2010	2011 to 2016
White	5,891	55.1%	5,616	53.0%	5,660	52.8%	5,826	51.8%	-4.7%	2.9%
Black	4,601	43.1%	4,535	42.8%	4,618	43.1%	4,938	43.9%	-1.4%	6.9%
American Indian or Alaska Native	21	0.2%	18	0.2%	18	0.2%	18	0.2%	-14.3%	0.0%
Asian/Hawaiian/PI	29	0.3%	53	0.5%	54	0.5%	59	0.5%	82.8%	9.3%
Some Other Race	54	0.5%	217	2.0%	135	1.3%	143	1.3%	301.9%	5.9%
Two or More Races	91	0.9%	154	1.5%	241	2.3%	253	2.3%	69.2%	5.0%
Hispanic Ethnicity	212	2.0%	361	3.4%	380	3.5%	452	4.0%	70.3%	18.9%
Not Hispanic or Latino	10,475	98.0%	10,232	96.6%	10,346	96.5%	10,786	96.0%	-2.3%	4.3%

Households by Income

Households by Income Group 2011A



In 2011A the predominant household income category in this study area is **\$0 - \$15K**, and the income group that is least represented in this geography is **\$150K +**.

HH Income Categories*

HH Income Categories*	1990 Census		2000 Census		2011A Estimate		2016 Projection		Percent Change	
	Count	%	Count	%	Count	%	Count	%	1990 to 2000	2011 to 2016
\$0 - \$15,000	1,675	41.6%	1,256	29.1%	1,182	27.9%	1,137	27.4%	-25.0%	-3.8%
\$15,000 - \$24,999	771	19.2%	680	15.8%	560	13.2%	515	12.4%	-11.8%	-8.0%
\$25,000 - \$34,999	549	13.7%	607	14.1%	472	11.1%	406	9.8%	10.6%	-14.0%
\$35,000 - \$49,999	566	14.1%	679	15.7%	645	15.2%	609	14.7%	20.0%	-5.6%
\$50,000 - \$74,999	307	7.6%	671	15.6%	714	16.8%	711	17.1%	118.6%	-0.4%
\$75,000 - \$99,999	39	1.0%	245	5.7%	415	9.8%	484	11.7%	528.2%	16.6%
\$100,000 - \$149,999	69	1.7%	136	3.2%	184	4.3%	201	4.8%	97.1%	9.2%
\$150,000 +	41	1.0%	40	0.9%	72	1.7%	85	2.0%	-2.4%	18.1%
Average Hhld Income	\$28,272		\$36,350		\$42,959		\$46,219		28.6%	7.6%
Median Hhld Income	\$18,560		\$28,017		\$33,072		\$35,358		51.0%	6.9%
Per Capita Income	\$10,752		\$14,673		\$18,017		\$18,215		36.5%	1.1%

*This Census 2010 data has not yet been released

Current year data is for the year **2011**, 5 year projected data is for the year **2016**. More About Our Data.
Demographic data ' 2011 by Experian/Applied Geographic Solutions.

Business List data ' 2011 by D&B^{fi}. All rights reserved. All D&B information is powered by DUNSRight™, D&B's Quality Process.

' 2011. DDR is brought to you by Alteryx, Inc.

Alteryx, DemographicsNow.com and the Alteryx and DemographicsNow.com logos are trademarks of Alteryx, Inc. All rights reserved.

Privacy Statement | License Agreement