



Date: 04/26/12

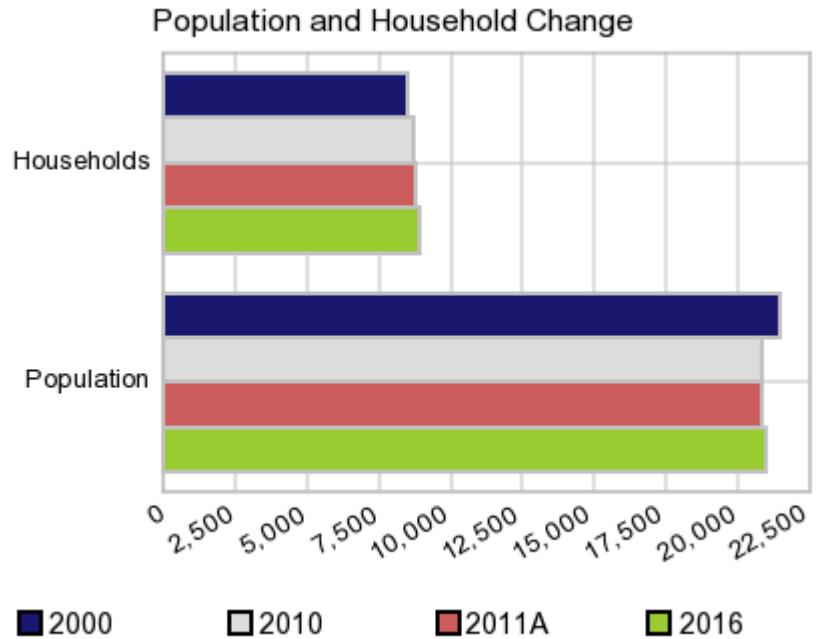
Current Geography Selection: (1 Selected) Counties: Carroll County

Executive Summary Report with Charts

Population Demographics:

The number of households in the study area in 2000 was **8,486** and changed to **8,683** in 2010, representing a change of **2.3%**. The household count in 2011A was **8,716** and the household projection for 2016 is **8,845**, a change of **1.5%**.

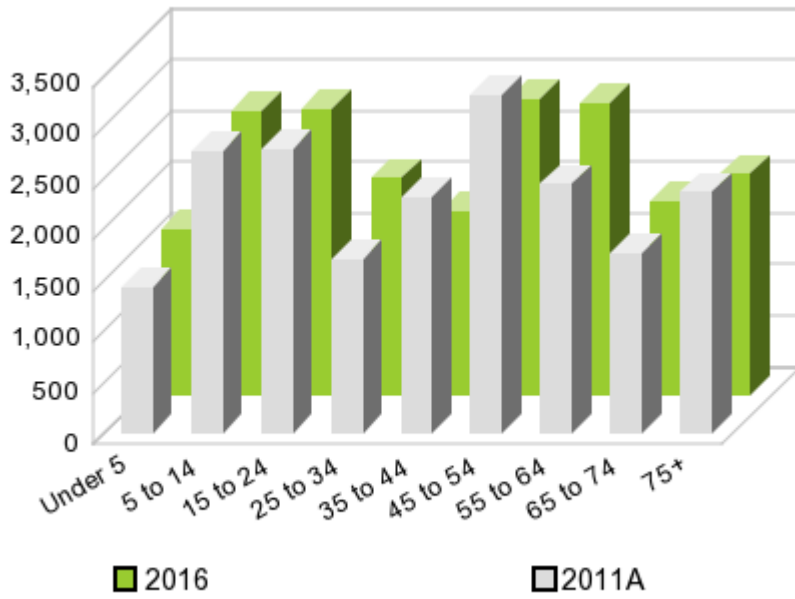
The population in the study area in 2000 was **21,421** and in 2010 it was **20,816**, roughly a **-2.8%** change. The population in 2011A was **20,839** and the projection for 2016 is **20,930** representing a change of **0.4%**.



	2000 Census	2010 Census	2011A Estimate	2016 Projection	Percent Change	
					2000 to 2010	2011 to 2016
Total Population	21,421	20,816	20,839	20,930	-2.8%	0.4%
Total Households	8,486	8,683	8,716	8,845	9.0%	1.5%

Population by Age

Age



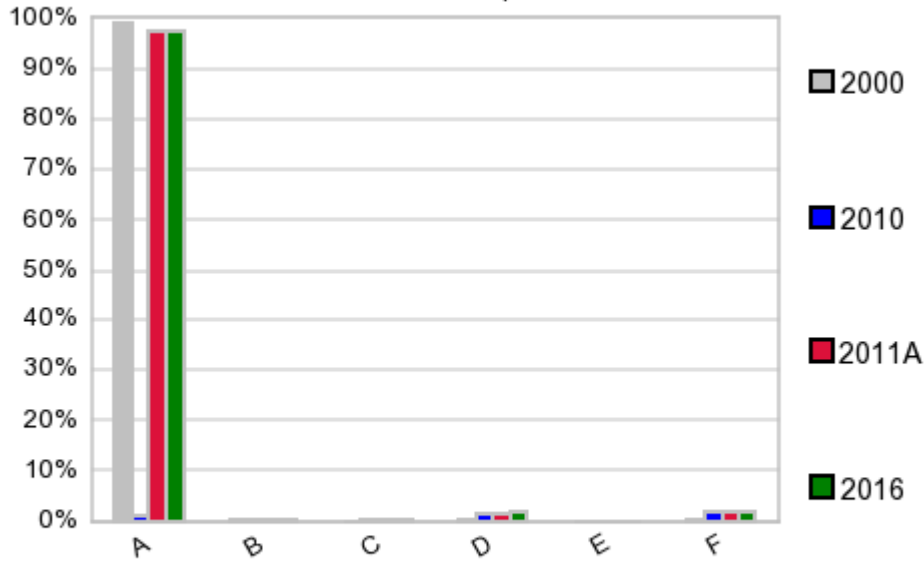
In 1990, the median age of the total population in the study area was **34**, and in 2000, it was **39**. The median age in 2011A is **43** and it is predicted to change in five years to **42** years. In 2011A, females represented **51.4%** of the population with a median age of **45** and males represented **48.6%** of the population with a median age of **41** years. In 2011A, the most prominent age group in this geography is **Age 45 to 54** years. The age group least represented in this geography is **18 to 24** years.

Age Groups*

	1990		2000		2011A		2016		Percent Change	
	Census	%	Census	%	Estimate	%	Projection	%	1990 to 2000	2011 to 2016
0 to 4	1,689	7.9%	1,287	6.0%	1,440	6.9%	1,629	7.8%	-23.8%	13.1%
5 to 14	3,764	17.6%	3,317	15.5%	2,765	13.3%	2,786	13.3%	-11.9%	0.8%
15 to 19	1,386	6.5%	1,723	8.0%	1,464	7.0%	1,374	6.6%	24.3%	-6.1%
20 to 24	1,052	4.9%	1,034	4.8%	1,311	6.3%	1,433	6.8%	-1.7%	9.3%
25 to 34	3,108	14.5%	2,216	10.3%	1,701	8.2%	2,124	10.1%	-28.7%	24.9%
35 to 44	2,676	12.5%	3,336	15.6%	2,317	11.1%	1,804	8.6%	24.7%	-22.1%
45 to 54	1,932	9.0%	2,662	12.4%	3,310	15.9%	2,895	13.8%	37.8%	-12.5%
55 to 64	2,008	9.4%	1,841	8.6%	2,436	11.7%	2,862	13.7%	-8.3%	17.5%
65 to 74	2,004	9.4%	1,874	8.7%	1,760	8.4%	1,889	9.0%	-6.5%	7.3%
75 +	1,806	8.4%	2,131	9.9%	2,364	11.3%	2,163	10.3%	18.0%	-8.5%

Population by Race/Ethnicity

Race and Ethnicity Percent Composition



In 2011A, the predominant race/ethnicity category in this study area is **White**. The race & ethnicity category least represented in this geography is **American Indian, Alaska Native**.

A: White
 B: Asian Pac Islr
 C: Black
 D: Hispanic
 E: Amer Indian or Alaska Native
 F: Other or Multi Race

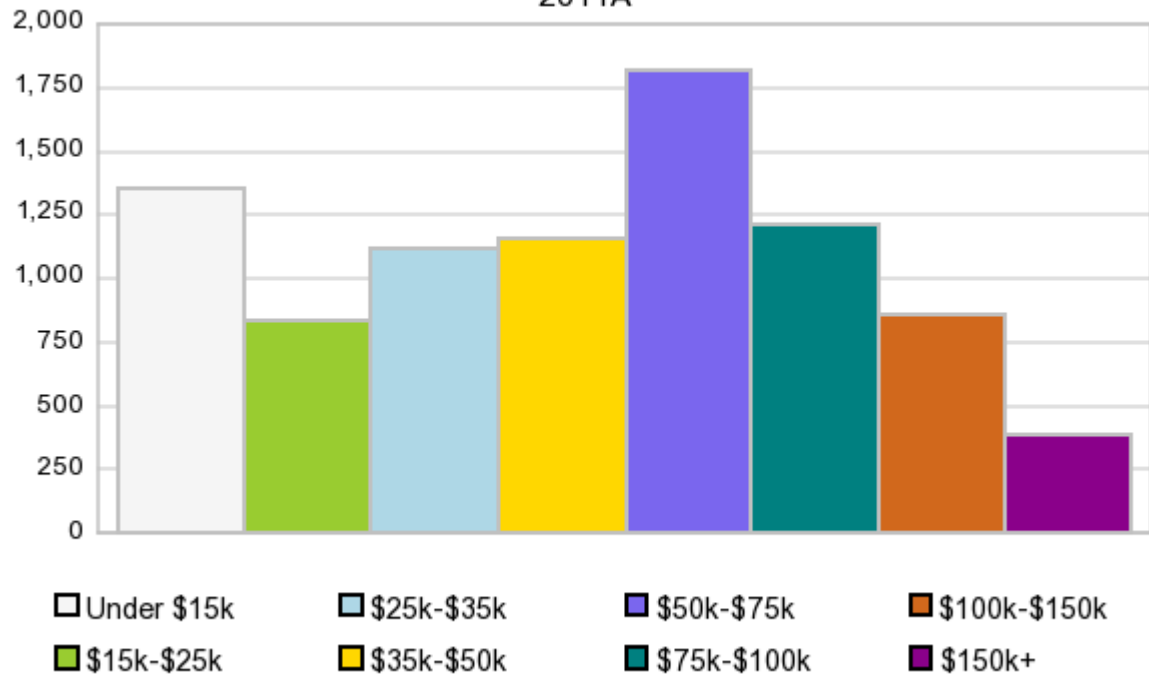
Race & Ethnicity

	2000 Census		2010 Census		2011A Estimate		2016 Projection		Percent Change	
	Count	%	Count	%	Count	%	Count	%	2000 to 2010	2011 to 2016
White	21,178	98.9%	20,250	97.3%	20,275	97.3%	20,367	97.3%	-4.4%	0.5%
Black	38	0.2%	83	0.4%	83	0.4%	82	0.4%	118.4%	-1.2%
American Indian or Alaska Native	22	0.1%	25	0.1%	25	0.1%	25	0.1%	13.6%	0.0%
Asian/Hawaiian/PI	74	0.3%	93	0.4%	92	0.4%	91	0.4%	25.7%	-1.1%
Some Other Race	43	0.2%	179	0.9%	112	0.5%	110	0.5%	316.3%	-1.8%
Two or More Races	66	0.3%	186	0.9%	253	1.2%	256	1.2%	181.8%	1.2%
Hispanic Ethnicity	115	0.5%	333	1.6%	355	1.7%	441	2.1%	189.6%	24.2%
Not Hispanic or Latino	21,306	99.5%	20,483	98.4%	20,483	98.3%	20,490	97.9%	-3.9%	0.0%

Households by Income

Households by Income Group 2011A

In 2011A the predominant household income category in this study area is **\$50K - \$75K**, and the income group that is least represented in this geography is **\$150K +**.



HH Income Categories*

	1990 Census		2000 Census		2011A Estimate		2016 Projection		Percent Change	
		%		%		%		%	1990 to 2000	2011 to 2016
\$0 - \$15,000	2,353	29.5%	1,386	16.3%	1,354	15.5%	1,308	14.8%	-41.1%	-3.4%
\$15,000 - \$24,999	1,733	21.8%	1,218	14.4%	835	9.6%	706	8.0%	-29.7%	-15.5%
\$25,000 - \$34,999	1,618	20.3%	1,427	16.8%	1,114	12.8%	1,001	11.3%	-11.8%	-10.1%
\$35,000 - \$49,999	1,330	16.7%	1,510	17.8%	1,154	13.2%	1,038	11.7%	13.5%	-10.1%
\$50,000 - \$74,999	630	7.9%	1,890	22.3%	1,815	20.8%	1,800	20.4%	200.0%	-0.8%
\$75,000 - \$99,999	155	2.0%	563	6.6%	1,206	13.8%	1,465	16.6%	263.2%	21.5%
\$100,000 - \$149,999	41	0.5%	327	3.9%	853	9.8%	1,071	12.1%	697.6%	25.6%
\$150,000 +	107	1.3%	165	1.9%	383	4.4%	455	5.1%	54.2%	18.8%
Average Hhld Income	\$29,484		\$46,340		\$61,122		\$71,437		57.2%	16.9%
Median Hhld Income	\$24,469		\$36,903		\$48,513		\$55,847		50.8%	15.1%
Per Capita Income	\$11,154		\$18,358		\$25,753		\$30,403		64.6%	18.1%

*This Census 2010 data has not yet been released

Current year data is for the year **2011**, 5 year projected data is for the year **2016**. More About Our Data.
Demographic data © 2011 by Experian/Applied Geographic Solutions.

Business List data © 2011 by D&B®. All rights reserved. All D&B information is powered by DUNSRight™, D&B's Quality Process.

Alteryx, DemographicsNow.com and the Alteryx and DemographicsNow.com logos are trademarks of Alteryx, Inc.
All rights reserved.

Privacy Statement | License Agreement