



Date: 04/26/12

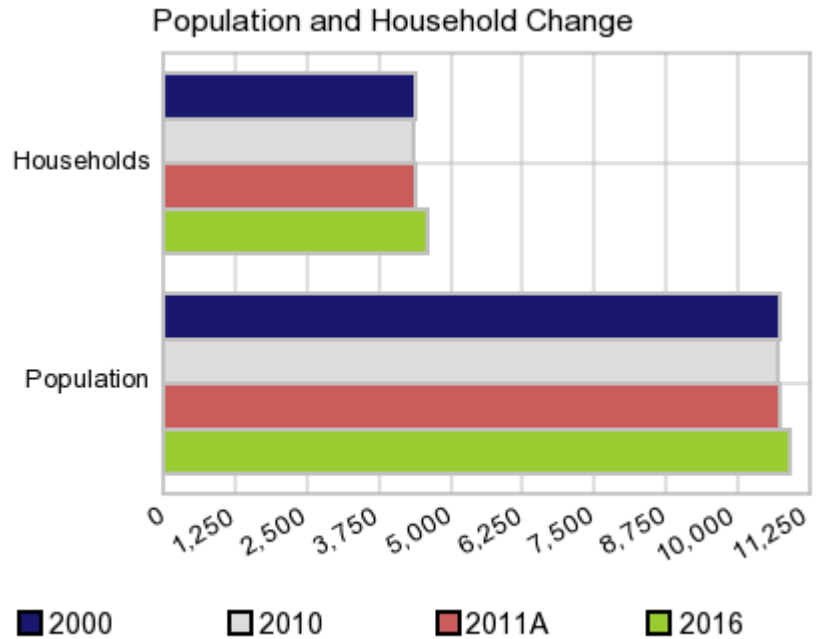
Current Geography Selection: (1 Selected) Counties: Franklin County

## Executive Summary Report with Charts

### Population Demographics:

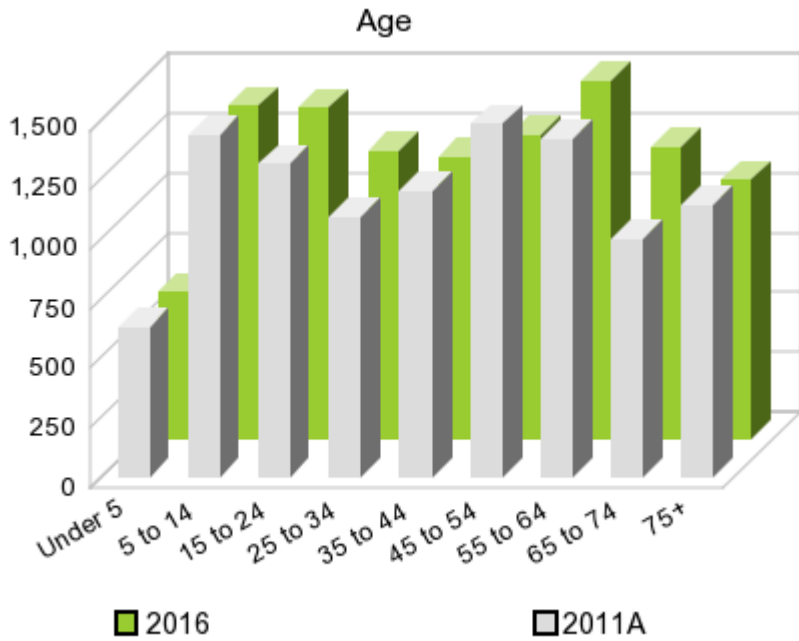
The number of households in the study area in 2000 was **4,356** and changed to **4,332** in 2010, representing a change of **-0.6%**. The household count in 2011A was **4,378** and the household projection for 2016 is **4,563**, a change of **4.2%**.

The population in the study area in 2000 was **10,704** and in 2010 it was **10,680**, roughly a **-0.2%** change. The population in 2011A was **10,719** and the projection for 2016 is **10,874** representing a change of **1.4%**.



	2000 Census	2010 Census	2011A Estimate	2016 Projection	Percent Change	
					2000 to 2010	2011 to 2016
Total Population	10,704	10,680	10,719	10,874	-0.2%	1.4%
Total Households	4,356	4,332	4,378	4,563	-5.4%	4.2%

### Population by Age



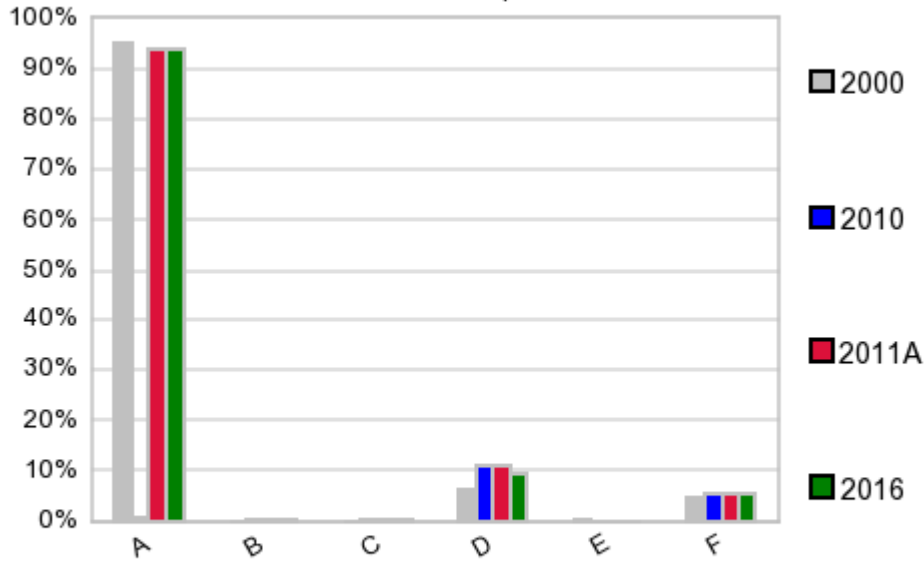
In 1990, the median age of the total population in the study area was **38**, and in 2000, it was **41**. The median age in 2011A is **42** and it is predicted to change in five years to **42** years. In 2011A, females represented **50.3%** of the population with a median age of **45** and males represented **49.7%** of the population with a median age of **40** years. In 2011A, the most prominent age group in this geography is **Age 45 to 54** years. The age group least represented in this geography is **0 to 4** years.

**Age Groups\***

	1990 Census		2000 Census		2011A Estimate		2016 Projection		Percent Change	
		%		%		%		%	1990 to 2000	2011 to 2016
0 to 4	731	6.4%	601	5.6%	632	5.9%	613	5.6%	-17.8%	-3.0%
5 to 14	1,738	15.3%	1,446	13.5%	1,437	13.4%	1,393	12.8%	-16.8%	-3.1%
15 to 19	691	6.1%	847	7.9%	663	6.2%	713	6.6%	22.6%	7.5%
20 to 24	476	4.2%	484	4.5%	651	6.1%	675	6.2%	1.7%	3.7%
25 to 34	1,522	13.4%	1,066	10.0%	1,097	10.2%	1,212	11.1%	-30.0%	10.5%
35 to 44	1,568	13.8%	1,506	14.1%	1,200	11.2%	1,184	10.9%	-4.0%	-1.3%
45 to 54	1,151	10.1%	1,491	13.9%	1,480	13.8%	1,273	11.7%	29.5%	-14.0%
55 to 64	1,209	10.6%	1,067	10.0%	1,418	13.2%	1,499	13.8%	-11.7%	5.7%
65 to 74	1,153	10.1%	1,046	9.8%	996	9.3%	1,227	11.3%	-9.3%	23.2%
75 +	1,125	9.9%	1,150	10.7%	1,143	10.7%	1,083	10.0%	2.2%	-5.3%

**Population by Race/Ethnicity**

### Race and Ethnicity Percent Composition



In 2011A, the predominant race/ethnicity category in this study area is **White**. The race & ethnicity category least represented in this geography is **American Indian, Alaska Native**.

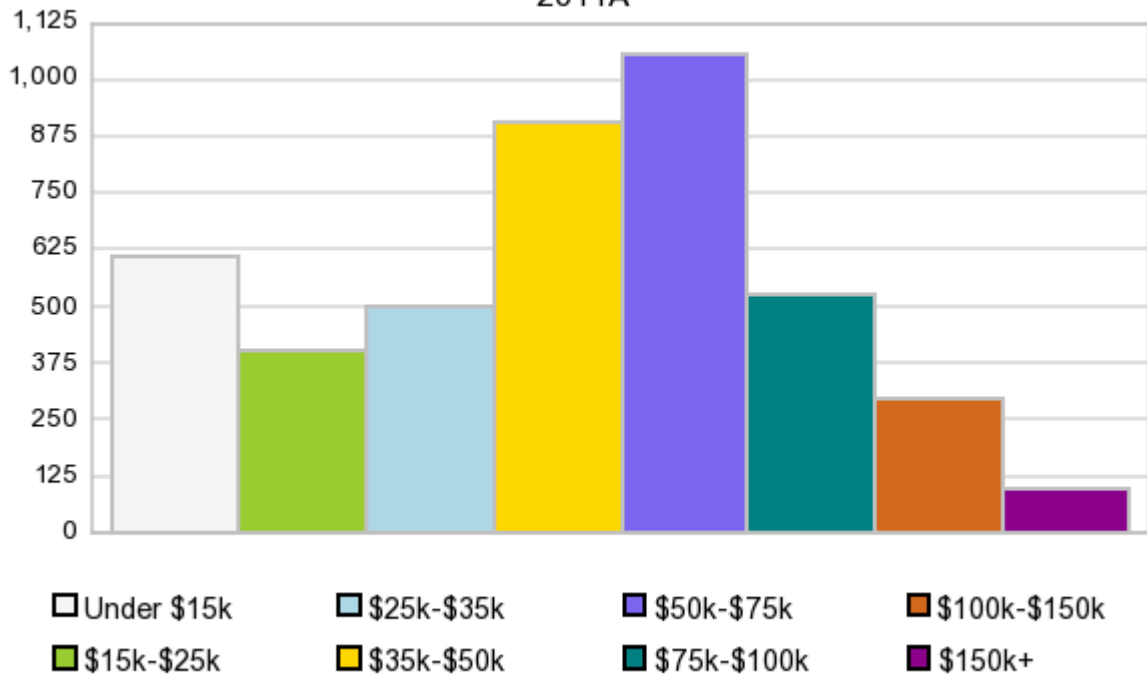
A: White  
 B: Asian Pac Islr  
 C: Black  
 D: Hispanic  
 E: Amer Indian or Alaska Native  
 F: Other or Multi Race

### Race & Ethnicity

	2000		2010		2011A		2016		Percent Change	
	Census	%	Census	%	Estimate	%	Projection	%	2000 to 2010	2011 to 2016
White	10,160	94.9%	10,001	93.6%	10,039	93.7%	10,188	93.7%	-1.6%	1.5%
Black	9	0.1%	38	0.4%	38	0.4%	38	0.4%	322.2%	0.0%
American Indian or Alaska Native	25	0.2%	20	0.2%	20	0.2%	21	0.2%	-20.0%	5.0%
Asian/Hawaiian/PI	19	0.2%	32	0.3%	32	0.3%	31	0.3%	68.4%	-3.1%
Some Other Race	434	4.1%	420	3.9%	494	4.6%	498	4.6%	-3.2%	0.8%
Two or More Races	57	0.5%	169	1.6%	96	0.9%	98	0.9%	196.5%	2.1%
Hispanic Ethnicity	642	6.0%	1,209	11.3%	1,170	10.9%	1,025	9.4%	88.3%	-12.4%
Not Hispanic or Latino	10,062	94.0%	9,471	88.7%	9,549	89.1%	9,849	90.6%	-5.9%	3.1%

### Households by Income

Households by Income Group  
2011A



In 2011A the predominant household income category in this study area is **\$50K - \$75K**, and the income group that is least represented in this geography is **\$150K +**.

**HH Income Categories\***

	1990 Census		2000 Census		2011A Estimate		2016 Projection		Percent Change	
		%		%		%		%	1990 to 2000	2011 to 2016
\$0 - \$15,000	1,439	31.4%	674	15.5%	609	13.9%	585	12.8%	-53.2%	-3.9%
\$15,000 - \$24,999	984	21.5%	706	16.2%	399	9.1%	313	6.9%	-28.3%	-21.6%
\$25,000 - \$34,999	963	21.0%	748	17.2%	496	11.3%	424	9.3%	-22.3%	-14.5%
\$35,000 - \$49,999	638	13.9%	815	18.7%	905	20.7%	956	21.0%	27.7%	5.6%
\$50,000 - \$74,999	374	8.2%	866	19.9%	1,055	24.1%	1,179	25.8%	131.6%	11.8%
\$75,000 - \$99,999	115	2.5%	326	7.5%	522	11.9%	619	13.6%	183.5%	18.6%
\$100,000 - \$149,999	36	0.8%	162	3.7%	297	6.8%	379	8.3%	350.0%	27.6%
\$150,000 +	28	0.6%	59	1.4%	95	2.2%	108	2.4%	110.7%	13.7%
Average Hhld Income	\$28,970		\$45,340		\$58,535		\$64,874		56.5%	10.8%
Median Hhld Income	\$23,786		\$35,834		\$45,681		\$50,078		50.7%	9.6%
Per Capita Income	\$11,767		\$18,451		\$24,042		\$27,374		56.8%	13.9%

\*This Census 2010 data has not yet been released

Current year data is for the year **2011**, 5 year projected data is for the year **2016**. More About Our Data.  
Demographic data © 2011 by Experian/Applied Geographic Solutions.

Business List data © 2011 by D&B®. All rights reserved. All D&B information is powered by DUNSRight™, D&B's Quality Process.

Alteryx, DemographicsNow.com and the Alteryx and DemographicsNow.com logos are trademarks of Alteryx, Inc.  
All rights reserved.

Privacy Statement | License Agreement