



Date: 04/26/12

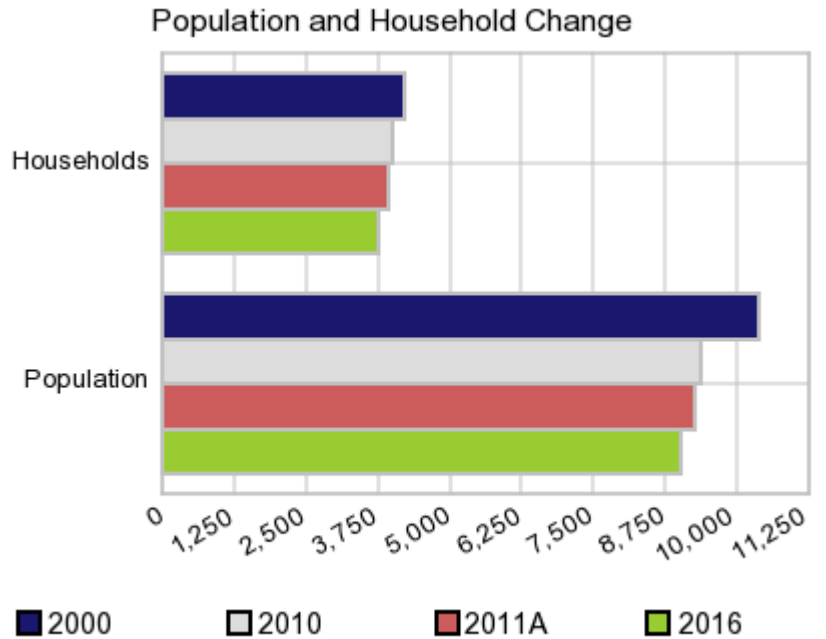
Current Geography Selection: (1 Selected) Counties: Greene County

## Executive Summary Report with Charts

### Population Demographics:

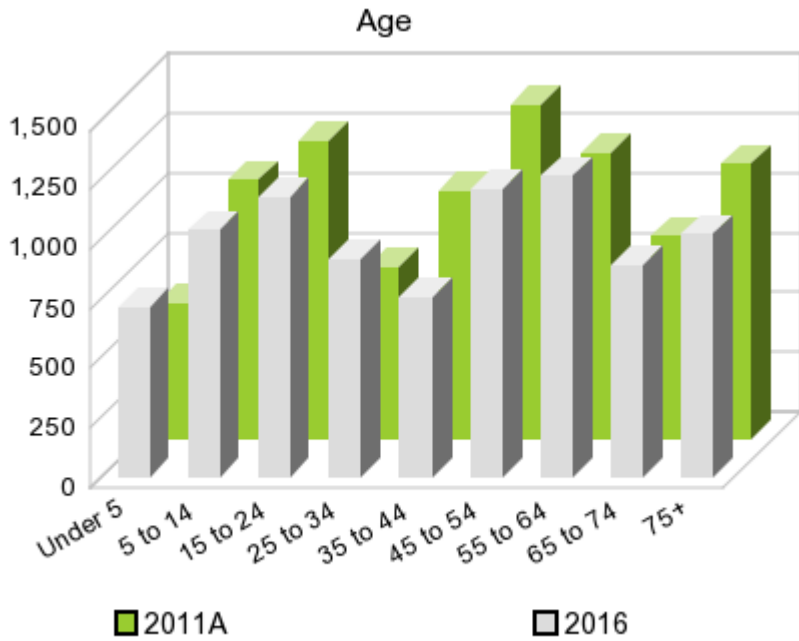
The number of households in the study area in 2000 was **4,205** and changed to **3,996** in 2010, representing a change of **-5.0%**. The household count in 2011A was **3,945** and the household projection for 2016 is **3,747**, a change of **-5.0%**.

The population in the study area in 2000 was **10,366** and in 2010 it was **9,336**, roughly a **-9.9%** change. The population in 2011A was **9,267** and the projection for 2016 is **8,997** representing a change of **-2.9%**.



	2000 Census	2010 Census	2011A Estimate	2016 Projection	Percent Change	
					2000 to 2010	2011 to 2016
Total Population	10,366	9,336	9,267	8,997	-9.9%	-2.9%
Total Households	4,205	3,996	3,945	3,747	-4.7%	-5.0%

### Population by Age



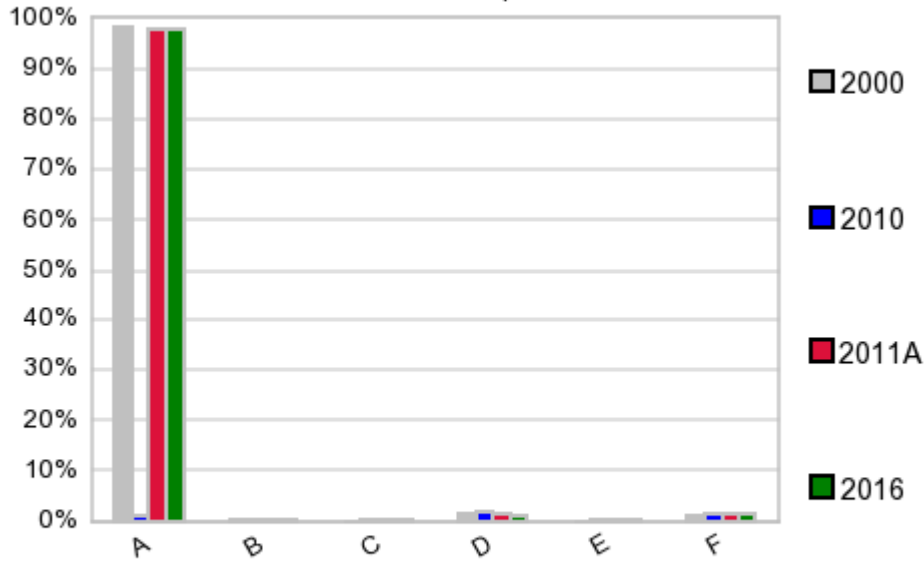
In 1990, the median age of the total population in the study area was **39**, and in 2000, it was **41**. The median age in 2011A is **45** and it is predicted to change in five years to **44** years. In 2011A, females represented **50.2%** of the population with a median age of **48** and males represented **49.8%** of the population with a median age of **42** years. In 2011A, the most prominent age group in this geography is **Age 45 to 54** years. The age group least represented in this geography is **0 to 4** years.

**Age Groups\***

	1990 Census		2000 Census		2011A Estimate		2016 Projection		Percent Change	
		%		%		%		%	1990 to 2000	2011 to 2016
0 to 4	636	6.3%	602	5.8%	568	6.1%	714	7.9%	-5.3%	25.7%
5 to 14	1,461	14.5%	1,526	14.7%	1,086	11.7%	1,041	11.6%	4.5%	-4.1%
15 to 19	591	5.9%	779	7.5%	662	7.1%	549	6.1%	31.8%	-17.1%
20 to 24	414	4.1%	381	3.7%	585	6.3%	629	7.0%	-8.0%	7.5%
25 to 34	1,285	12.8%	982	9.5%	724	7.8%	918	10.2%	-23.6%	26.8%
35 to 44	1,316	13.1%	1,534	14.8%	1,038	11.2%	755	8.4%	16.6%	-27.3%
45 to 54	982	9.8%	1,360	13.1%	1,400	15.1%	1,206	13.4%	38.5%	-13.9%
55 to 64	1,098	10.9%	962	9.3%	1,204	13.0%	1,267	14.1%	-12.4%	5.2%
65 to 74	1,094	10.9%	992	9.6%	850	9.2%	894	9.9%	-9.3%	5.2%
75 +	1,168	11.6%	1,248	12.0%	1,149	12.4%	1,022	11.4%	6.9%	-11.1%

**Population by Race/Ethnicity**

### Race and Ethnicity Percent Composition



In 2011A, the predominant race/ethnicity category in this study area is **White**. The race & ethnicity category least represented in this geography is **American Indian, Alaska Native**.

A: White  
 B: Asian Pac Islr  
 C: Black  
 D: Hispanic  
 E: Amer Indian or Alaska Native  
 F: Other or Multi Race

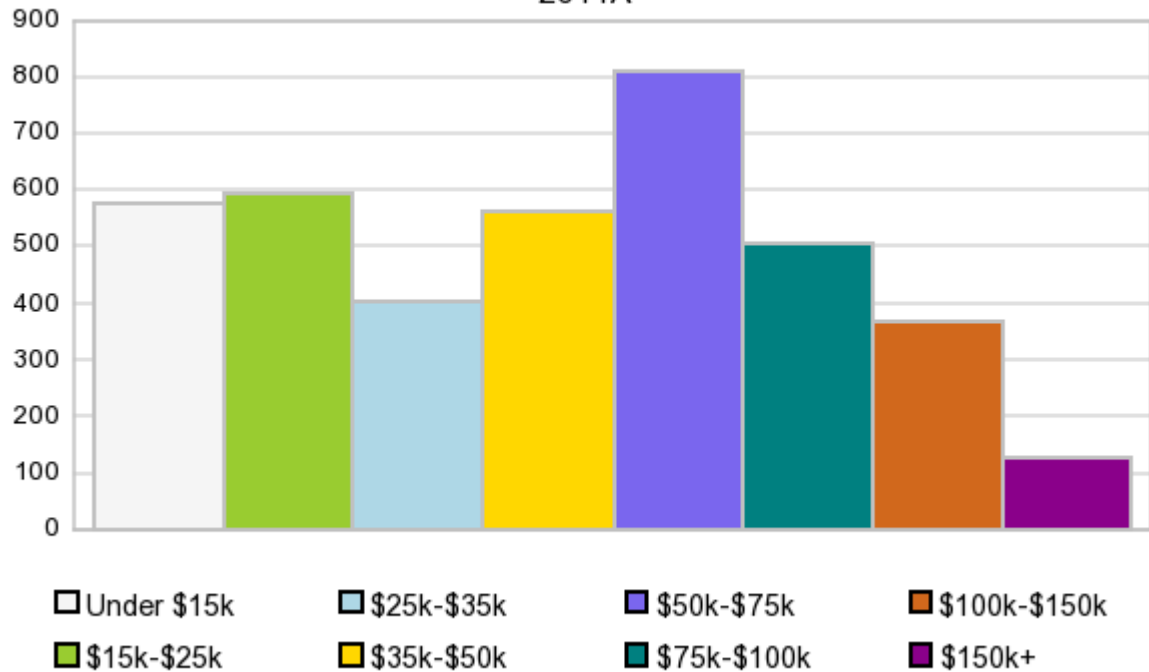
### Race & Ethnicity

	2000		2010		2011A		2016		Percent Change	
	Census	%	Census	%	Estimate	%	Projection	%	2000 to 2010	2011 to 2016
White	10,175	98.2%	9,108	97.6%	9,041	97.6%	8,780	97.6%	-10.5%	-2.9%
Black	15	0.1%	26	0.3%	26	0.3%	24	0.3%	73.3%	-7.7%
American Indian or Alaska Native	16	0.2%	25	0.3%	25	0.3%	25	0.3%	56.3%	0.0%
Asian/Hawaiian/PI	26	0.3%	33	0.4%	32	0.3%	30	0.3%	26.9%	-6.3%
Some Other Race	69	0.7%	82	0.9%	70	0.8%	66	0.7%	18.8%	-5.7%
Two or More Races	65	0.6%	62	0.7%	73	0.8%	72	0.8%	-4.6%	-1.4%
Hispanic Ethnicity	172	1.7%	171	1.8%	153	1.7%	100	1.1%	-0.6%	-34.6%
Not Hispanic or Latino	10,194	98.3%	9,165	98.2%	9,114	98.4%	8,897	98.9%	-10.1%	-2.4%

### Households by Income

### Households by Income Group 2011A

In 2011A the predominant household income category in this study area is **\$50K - \$75K**, and the income group that is least represented in this geography is **\$150K +**.



#### HH Income Categories\*

	1990 Census		2000 Census		2011A Estimate		2016 Projection		Percent Change	
		%		%		%		%	1990 to 2000	2011 to 2016
\$0 - \$15,000	1,276	30.4%	806	19.2%	577	14.6%	525	14.0%	-36.8%	-9.0%
\$15,000 - \$24,999	1,080	25.7%	697	16.6%	594	15.1%	527	14.1%	-35.5%	-11.3%
\$25,000 - \$34,999	838	20.0%	663	15.8%	402	10.2%	305	8.1%	-20.9%	-24.1%
\$35,000 - \$49,999	605	14.4%	805	19.1%	564	14.3%	472	12.6%	33.1%	-16.3%
\$50,000 - \$74,999	266	6.3%	831	19.8%	810	20.5%	760	20.3%	212.4%	-6.2%
\$75,000 - \$99,999	82	2.0%	265	6.3%	504	12.8%	572	15.3%	223.2%	13.5%
\$100,000 - \$149,999	35	0.8%	90	2.1%	368	9.3%	444	11.9%	157.1%	20.7%
\$150,000 +	7	0.2%	48	1.1%	126	3.2%	142	3.8%	585.7%	12.7%
Average Hhld Income	\$26,175		\$40,115		\$56,571		\$67,261		53.3%	18.9%
Median Hhld Income	\$22,274		\$34,007		\$43,903		\$51,616		52.7%	17.6%
Per Capita Income	\$11,051		\$16,273		\$24,207		\$28,159		47.3%	16.3%

\*This Census 2010 data has not yet been released

Current year data is for the year **2011**, 5 year projected data is for the year **2016**. More About Our Data.  
Demographic data © 2011 by Experian/Applied Geographic Solutions.

Business List data © 2011 by D&B®. All rights reserved. All D&B information is powered by DUNSRight™, D&B's Quality Process.

Alteryx, DemographicsNow.com and the Alteryx and DemographicsNow.com logos are trademarks of Alteryx, Inc.  
All rights reserved.

Privacy Statement | License Agreement