



Date: 12/02/09

Current Geography Selection: (1 Selected) Counties: Sedgwick County

Current Index Base: Entire US

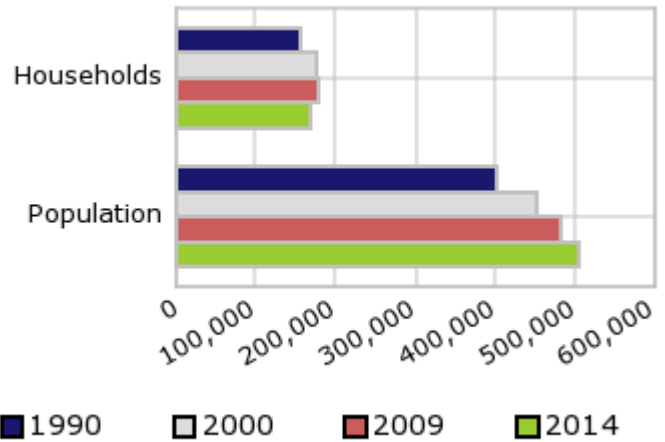
Executive Summary Report with Charts

Population Demographics

The number of households in the study area in 1990 was **156,568** and changed to **176,444** in 2000, representing a change of **12.7%**. The household count in 2009 was **179,671** and the household projection for 2014 is **171,043**, a change of **-4.8%**.

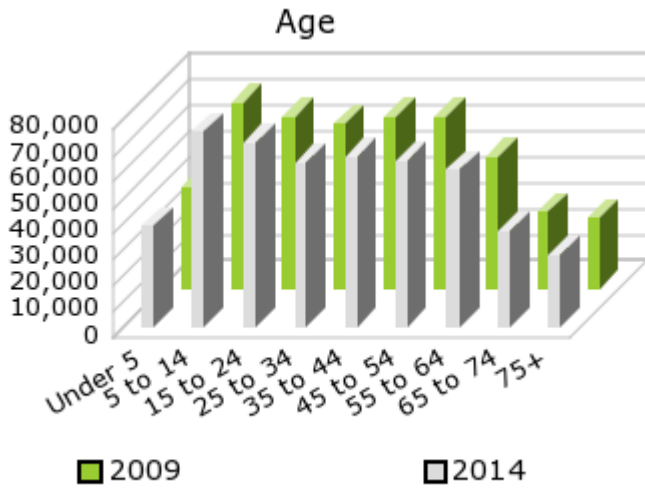
The population in the study area in 1990 was **403,663** and in 2000 it was **452,869**, roughly a **12.2%** change. The population in 2009 was **484,101** and the projection for 2014 is **505,236** representing a change of **4.4%**.

Population and Household Change



	1990 Census	2000 Census	2009 Estimate	2014 Projection	Percent Change	
					1990 to 2000	2009 to 2014
Total Population	403,663	452,869	484,101	505,236	12.2%	4.4%
Total Households	156,568	176,444	179,671	171,043	12.7%	-4.8%

Population by Age



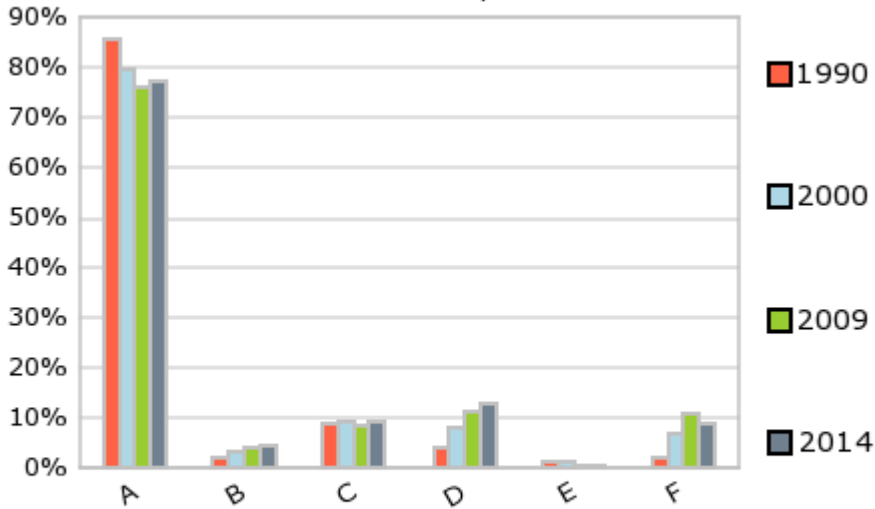
In 1990, the median age of the total population in the study area was **31.7**, and in 2000, it was **33.7**. The median age in 2009 is **35.0** and it is predicted to change in five years to **35.5** years. In 2009, females represented **50.3%** of the population with a median age of **36.0** and males represented **49.7%** of the population with a median age of **34.0** years. In 2009, the most prominent age group in this geography is **Age 5 to 14** years. The age group least represented in this geography is **75 +** years.

Age Groups

	1990		2000		2009		2014		Percent Change	
	Census	%	Census	%	Estimate	%	Projection	%	1990 to 2000	2009 to 2014
0 to 4	34,419	8.5%	35,697	7.9%	39,604	8.2%	39,190	7.8%	3.7%	-1.0%
5 to 14	61,878	15.3%	71,368	15.8%	72,042	14.9%	75,579	15.0%	15.3%	4.9%
15 to 19	26,048	6.5%	32,772	7.2%	35,025	7.2%	35,830	7.1%	25.8%	2.3%
20 to 24	29,097	7.2%	30,791	6.8%	31,886	6.6%	35,058	6.9%	5.8%	9.9%
25 to 34	75,459	18.7%	64,459	14.2%	63,707	13.2%	63,849	12.6%	-14.6%	0.2%
35 to 44	60,441	15.0%	72,868	16.1%	66,701	13.8%	65,980	13.1%	20.6%	-1.1%
45 to 54	37,295	9.2%	59,162	13.1%	66,820	13.8%	64,520	12.8%	58.6%	-3.4%
55 to 64	33,057	8.2%	34,178	7.5%	51,316	10.6%	60,442	12.0%	3.4%	17.8%
65 to 74	27,299	6.8%	26,923	5.9%	29,660	6.1%	36,715	7.3%	-1.4%	23.8%
75 +	18,683	4.6%	24,651	5.4%	27,345	5.6%	28,058	5.6%	31.9%	2.6%

Population by Race/Ethnicity

Race and Ethnicity Percent Composition



In 2009, the predominant race/ethnicity category in this study area is **White**. The race & ethnicity category least represented in this geography is **American Indian, Alaska Native**.

A: White
 B: Asian Pac Islr
 C: Black
 D: Hispanic
 E: Amer Indian or Alaska Native
 F: Other or Multi Race

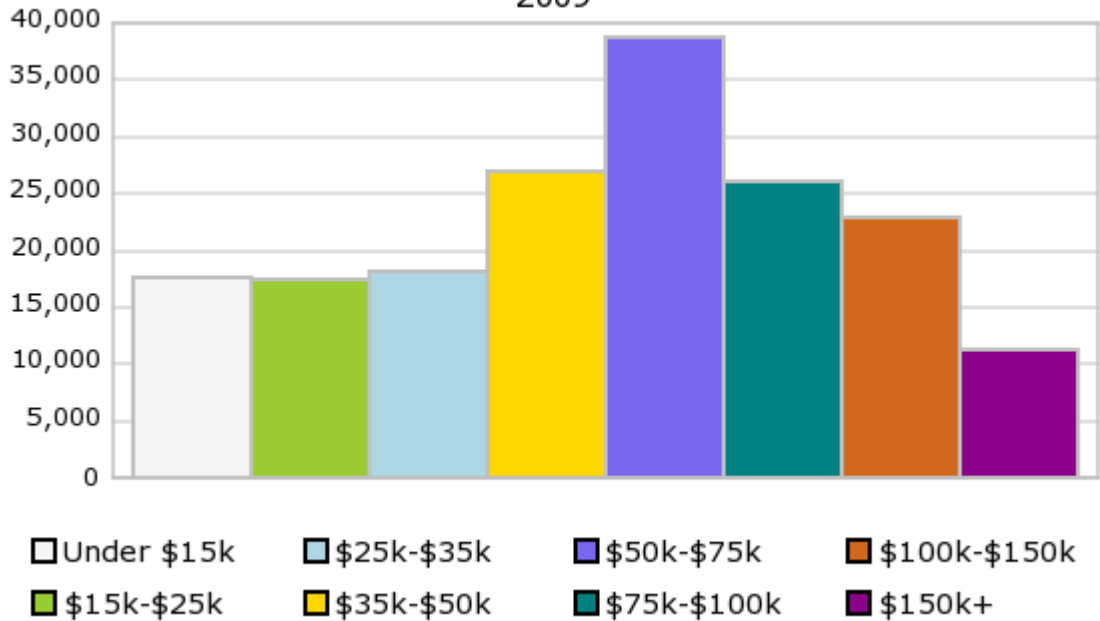
Race & Ethnicity

	1990		2000		2009		2014		Percent Change	
	Census	%	Census	%	Estimate	%	Projection	%	1990 to 2000	2009 to 2014
White	345,171	85.5%	359,489	79.4%	367,897	76.0%	390,038	77.2%	4.1%	6.0%
Black	36,060	8.9%	41,367	9.1%	41,704	8.6%	45,999	9.1%	14.7%	10.3%
American Indian or Alaska Native	4,556	1.1%	5,041	1.1%	2,041	0.4%	1,015	0.2%	10.6%	-50.3%
Asian or Pacific Islander	8,715	2.2%	15,402	3.4%	19,867	4.1%	22,803	4.5%	76.7%	14.8%
Other Race	9,141	2.3%	18,867	4.2%	28,687	5.9%	25,577	5.1%	106.4%	-10.8%
Two or More Races			12,703	2.8%	23,905	4.9%	19,804	3.9%		-17.2%
Hispanic Ethnicity	17,435	4.3%	36,397	8.0%	54,043	11.2%	64,015	12.7%	108.8%	18.5%
Not Hispanic or Latino	386,229	95.7%	416,472	92.0%	430,058	88.8%	441,221	87.3%	7.8%	2.6%

Households by Income

Households by Income Group 2009

In 2009 the predominant household income category in this study area is **\$50K - \$75K**, and the income group that is least represented in this geography is **\$150K +**.



HH Income Categories

	1990		2000		2009		2014		Percent Change	
	Census	%	Census	%	Estimate	%	Projection	%	1990 to 2000	2009 to 2014
\$0 - \$15,000	34,782	22.2%	23,906	13.5%	17,717	9.9%	15,085	8.8%	-31.3%	-14.9%
\$15,000 - \$24,999	28,869	18.4%	22,842	12.9%	17,610	9.8%	14,789	8.6%	-20.9%	-16.0%
\$25,000 - \$34,999	27,545	17.6%	24,337	13.8%	18,261	10.2%	15,586	9.1%	-11.6%	-14.6%
\$35,000 - \$49,999	30,493	19.5%	31,874	18.1%	26,923	15.0%	23,390	13.7%	4.5%	-13.1%
\$50,000 - \$74,999	23,790	15.2%	38,299	21.7%	38,751	21.6%	36,394	21.3%	61.0%	-6.1%
\$75,000 - \$99,999	6,226	4.0%	19,110	10.8%	26,081	14.5%	25,054	14.7%	206.9%	-3.9%
\$100,000 - \$149,999	2,881	1.8%	11,123	6.3%	23,061	12.8%	26,912	15.7%	286.1%	16.7%
\$150,000 +	1,945	1.2%	4,953	2.8%	11,267	6.3%	13,833	8.1%	154.7%	22.8%
Average Hhld Income	\$0		\$52,914		\$64,918		\$78,964		N/A%	21.6%
Median Hhld Income	\$30,275		\$42,828		\$55,255		\$60,601		41.5%	9.7%
Per Capita Income	\$14,469		\$20,616		\$24,401		\$27,026		42.5%	10.8%

Current year data is for the year **2009**, 5 year projected data is for the year **2014**. More About Our Data.

Demographic data © 2009 by Experian/Applied Geographic Solutions.

Traffic Count data © 2009 by DataMetrix. All rights reserved.

Business List data © 2009 by D&B®. All rights reserved. All D&B information is powered by DUNSRight™, D&B's Quality Process.

© 2009. DDR is brought to you by SRC, LLC.

SRC, DemographicsNow.com and the SRC and DemographicsNow.com logos are trademarks of SRC, LLC. All rights reserved.

Privacy Statement | License Agreement