



Date: 04/30/12

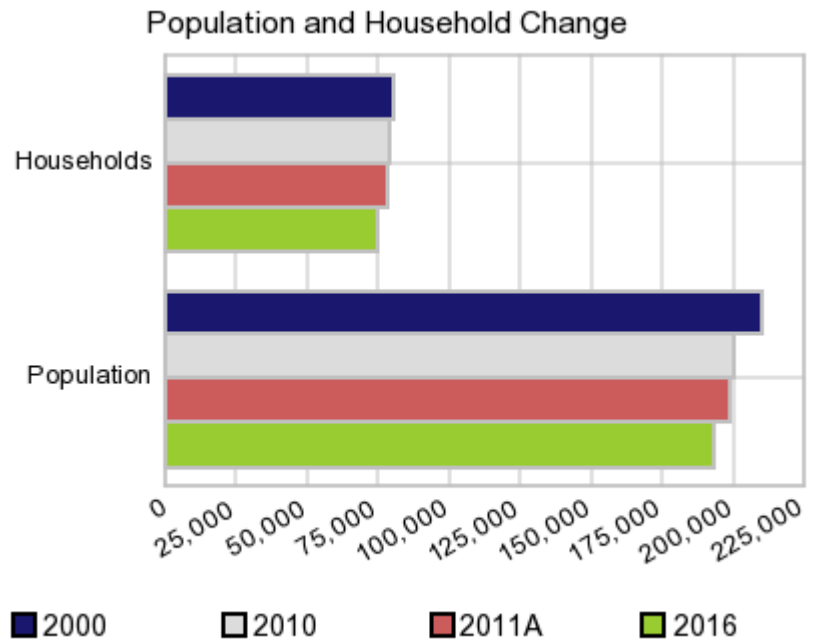
Current Geography Selection: (1 Selected) Counties: Saginaw County

Executive Summary Report with Charts

Population Demographics:

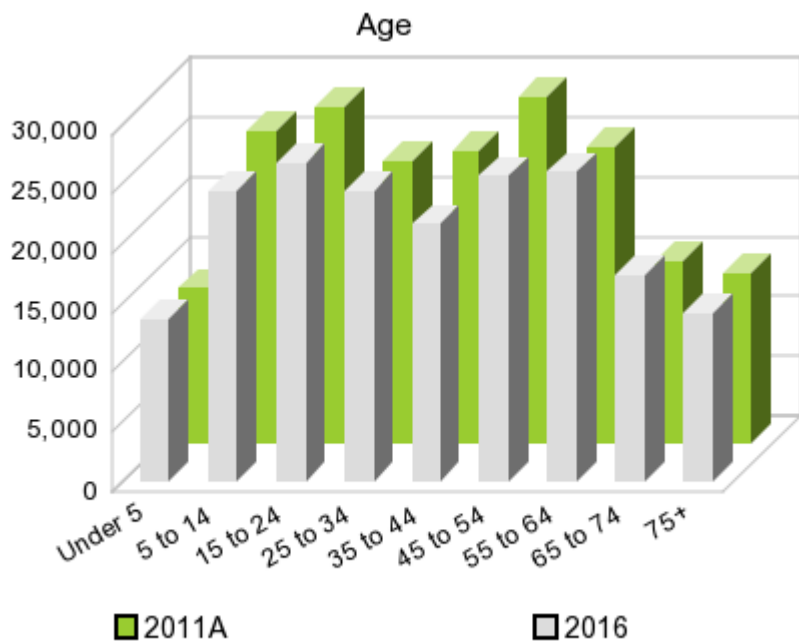
The number of households in the study area in 2000 was **80,430** and changed to **79,011** in 2010, representing a change of **-1.8%**. The household count in 2011A was **78,204** and the household projection for 2016 is **75,038**, a change of **-4.0%**.

The population in the study area in 2000 was **210,039** and in 2010 it was **200,169**, roughly a **-4.7%** change. The population in 2011A was **198,904** and the projection for 2016 is **193,485** representing a change of **-2.7%**.



	2000 Census	2010 Census	2011A Estimate	2016 Projection	Percent Change	
					2000 to 2010	2011 to 2016
Total Population	210,039	200,169	198,904	193,485	-4.7%	-2.7%
Total Households	80,430	79,011	78,204	75,038	1.0%	-4.0%

Population by Age



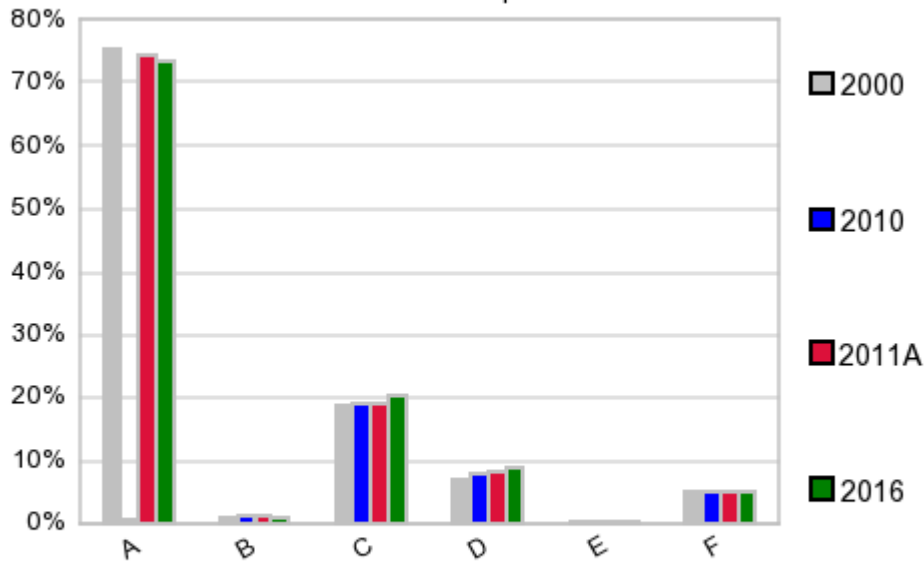
In 1990, the median age of the total population in the study area was **33**, and in 2000, it was **36**. The median age in 2011A is **39** and it is predicted to change in five years to **39** years. In 2011A, females represented **51.9%** of the population with a median age of **40** and males represented **48.2%** of the population with a median age of **37** years. In 2011A, the most prominent age group in this geography is **Age 45 to 54** years. The age group least represented in this geography is **0 to 4** years.

Age Groups*

	1990		2000		2011A		2016		Percent Change	
	Census	%	Census	%	Estimate	%	Projection	%	1990 to 2000	2011 to 2016
0 to 4	16,429	7.8%	14,201	6.8%	13,011	6.5%	13,688	7.1%	-13.6%	5.2%
5 to 14	32,893	15.5%	32,253	15.4%	26,143	13.1%	24,253	12.5%	-1.9%	-7.2%
15 to 19	17,065	8.1%	15,557	7.4%	14,616	7.4%	12,852	6.6%	-8.8%	-12.1%
20 to 24	14,474	6.8%	12,858	6.1%	13,547	6.8%	13,831	7.1%	-11.2%	2.1%
25 to 34	32,871	15.5%	26,327	12.5%	23,637	11.9%	24,332	12.6%	-19.9%	2.9%
35 to 44	31,508	14.9%	31,692	15.1%	24,490	12.3%	21,561	11.1%	0.6%	-12.0%
45 to 54	22,862	10.8%	29,435	14.0%	29,107	14.6%	25,603	13.2%	28.8%	-12.0%
55 to 64	18,233	8.6%	19,385	9.2%	24,815	12.5%	25,886	13.4%	6.3%	4.3%
65 to 74	14,706	6.9%	14,530	6.9%	15,253	7.7%	17,363	9.0%	-1.2%	13.8%
75 +	10,896	5.1%	13,801	6.6%	14,259	7.2%	14,074	7.3%	26.7%	-1.3%

Population by Race/Ethnicity

Race and Ethnicity Percent Composition



In 2011A, the predominant race/ethnicity category in this study area is **White**. The race & ethnicity category least represented in this geography is **American Indian, Alaska Native**.

A: White
 B: Asian Pac Islr
 C: Black
 D: Hispanic
 E: Amer Indian or Alaska Native
 F: Other or Multi Race

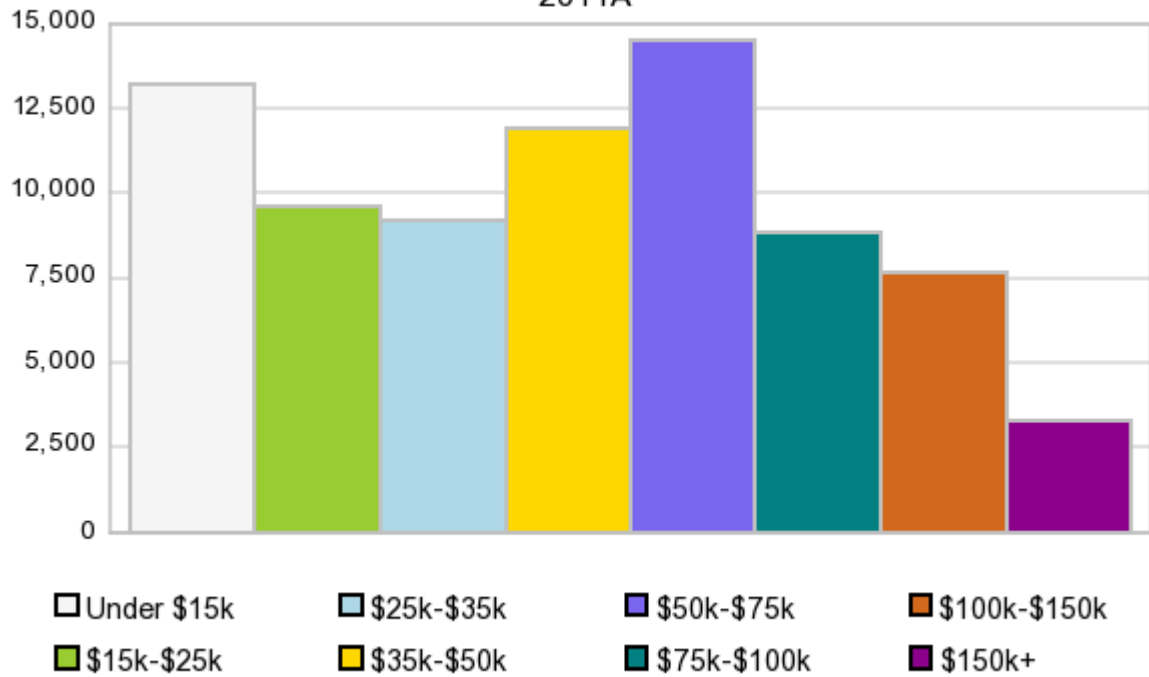
Race & Ethnicity

	2000		2010		2011A		2016		Percent Change	
	Census	%	Census	%	Estimate	%	Projection	%	2000 to 2010	2011 to 2016
White	158,220	75.3%	149,272	74.6%	147,852	74.3%	141,985	73.4%	-5.7%	-4.0%
Black	39,112	18.6%	38,114	19.0%	38,357	19.3%	39,193	20.3%	-2.6%	2.2%
American Indian or Alaska Native	863	0.4%	877	0.4%	867	0.4%	829	0.4%	1.6%	-4.4%
Asian/Hawaiian/PI	1,699	0.8%	2,173	1.1%	2,152	1.1%	2,072	1.1%	27.9%	-3.7%
Some Other Race	6,039	2.9%	4,757	2.4%	5,661	2.9%	5,469	2.8%	-21.2%	-3.4%
Two or More Races	4,106	2.0%	4,976	2.5%	4,011	2.0%	3,939	2.0%	21.2%	-1.8%
Hispanic Ethnicity	14,075	6.7%	15,573	7.8%	15,883	8.0%	17,108	8.8%	10.6%	7.7%
Not Hispanic or Latino	195,964	93.3%	184,596	92.2%	183,020	92.0%	176,379	91.2%	-5.8%	-3.6%

Households by Income

Households by Income Group 2011A

In 2011A the predominant household income category in this study area is **\$50K - \$75K**, and the income group that is least represented in this geography is **\$150K +**.



HH Income Categories*

	1990 Census		2000 Census		2011A Estimate		2016 Projection		Percent Change	
	Count	%	Count	%	Count	%	Count	%	1990 to 2000	2011 to 2016
\$0 - \$15,000	22,557	28.8%	13,768	17.1%	13,251	16.9%	12,796	17.1%	-39.0%	-3.4%
\$15,000 - \$24,999	13,314	17.0%	11,799	14.7%	9,601	12.3%	8,570	11.4%	-11.4%	-10.7%
\$25,000 - \$34,999	11,354	14.5%	11,123	13.8%	9,170	11.7%	8,284	11.0%	-2.0%	-9.7%
\$35,000 - \$49,999	14,339	18.3%	13,189	16.4%	11,910	15.2%	11,111	14.8%	-8.0%	-6.7%
\$50,000 - \$74,999	11,856	15.2%	14,868	18.5%	14,496	18.5%	13,914	18.5%	25.4%	-4.0%
\$75,000 - \$99,999	3,264	4.2%	8,233	10.2%	8,831	11.3%	8,671	11.6%	152.2%	-1.8%
\$100,000 - \$149,999	1,076	1.4%	5,472	6.8%	7,669	9.8%	8,160	10.9%	408.6%	6.4%
\$150,000 +	498	0.6%	1,978	2.5%	3,273	4.2%	3,528	4.7%	297.2%	7.8%
Average Hhld Income	\$33,197		\$49,950		\$55,787		\$58,357		50.5%	4.6%
Median Hhld Income	\$27,959		\$38,718		\$43,558		\$45,303		38.5%	4.0%
Per Capita Income	\$12,322		\$19,127		\$22,867		\$23,643		55.2%	3.4%

*This Census 2010 data has not yet been released

Current year data is for the year **2011**, 5 year projected data is for the year **2016**. More About Our Data.
Demographic data © 2011 by Experian/Applied Geographic Solutions.

Business List data © 2011 by D&B®. All rights reserved. All D&B information is powered by DUNSRight™, D&B's Quality Process.

Alteryx, DemographicsNow.com and the Alteryx and DemographicsNow.com logos are trademarks of Alteryx, Inc.
All rights reserved.

Privacy Statement | License Agreement