



Date: 05/01/12

Current Geography Selection: (1 Selected) Counties: Boone County

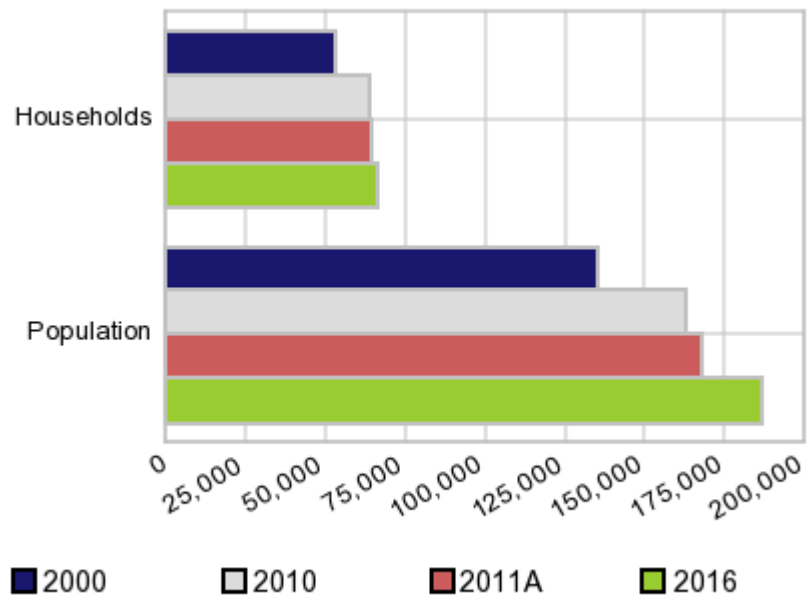
Executive Summary Report with Charts

Population Demographics:

The number of households in the study area in 2000 was **53,094** and changed to **64,077** in 2010, representing a change of **20.7%**. The household count in 2011A was **64,508** and the household projection for 2016 is **66,200**, a change of **2.6%**.

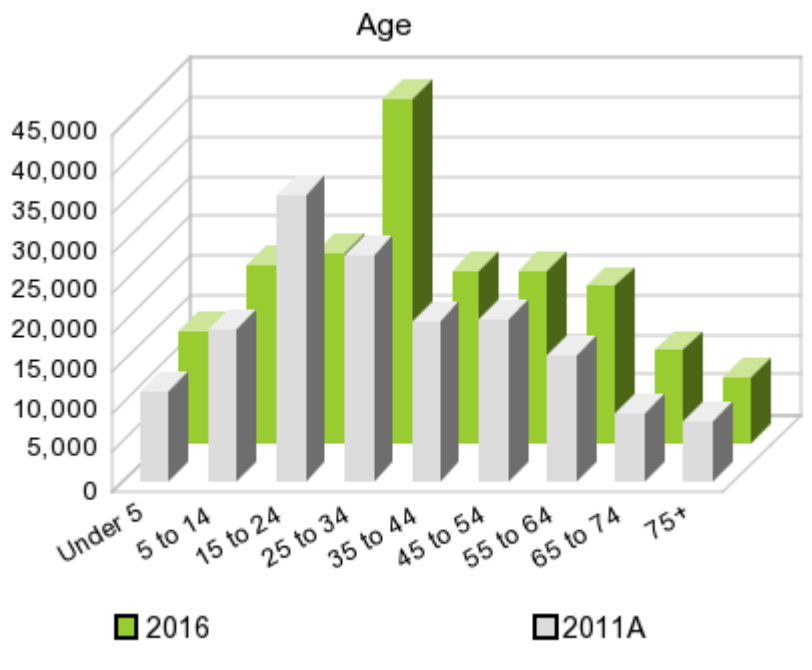
The population in the study area in 2000 was **135,454** and in 2010 it was **162,642**, roughly a **20.1%** change. The population in 2011A was **167,517** and the projection for 2016 is **186,754** representing a change of **11.5%**.

Population and Household Change



	2000 Census	2010 Census	2011A Estimate	2016 Projection	Percent Change	
					2000 to 2010	2011 to 2016
Total Population	135,454	162,642	167,517	186,754	20.1%	11.5%
Total Households	53,094	64,077	64,508	66,200	52.8%	2.6%

Population by Age



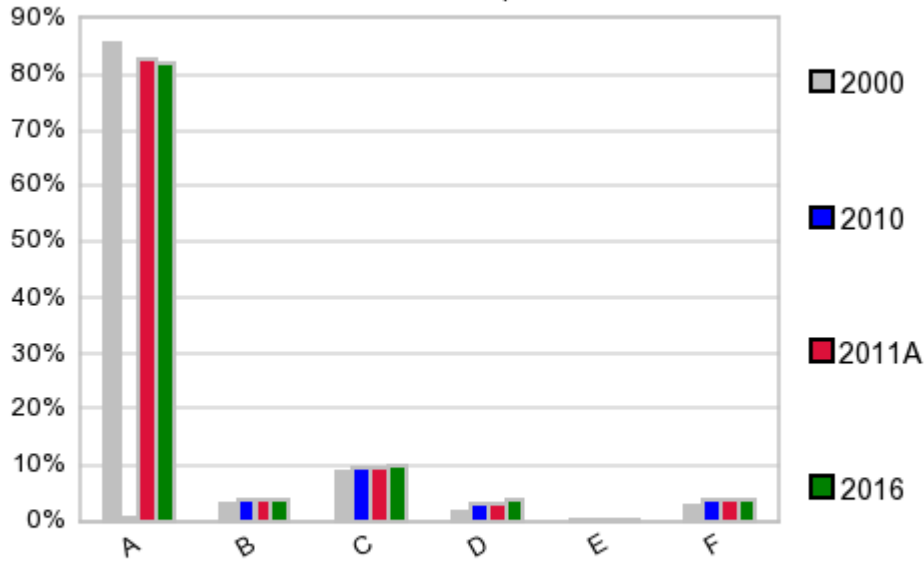
In 1990, the median age of the total population in the study area was **28**, and in 2000, it was **29**. The median age in 2011A is **30** and it is predicted to change in five years to **32** years. In 2011A, females represented **51.8%** of the population with a median age of **30** and males represented **48.2%** of the population with a median age of **29** years. In 2011A, the most prominent age group in this geography is **Age 25 to 34** years. The age group least represented in this geography is **75 +** years.

Age Groups*

	1990		2000		2011A		2016		Percent Change	
	Census	%	Census	%	Estimate	%	Projection	%	1990 to 2000	2011 to 2016
0 to 4	7,924	7.1%	8,452	6.2%	11,361	6.8%	14,028	7.5%	6.7%	23.5%
5 to 14	14,012	12.5%	17,503	12.9%	19,190	11.5%	22,478	12.0%	24.9%	17.1%
15 to 19	11,029	9.8%	12,900	9.5%	13,093	7.8%	10,145	5.4%	17.0%	-22.5%
20 to 24	17,199	15.3%	18,981	14.0%	22,800	13.6%	13,758	7.4%	10.4%	-39.7%
25 to 34	21,218	18.9%	20,629	15.2%	28,400	17.0%	43,274	23.2%	-2.8%	52.4%
35 to 44	15,998	14.2%	19,923	14.7%	20,280	12.1%	21,626	11.6%	24.5%	6.6%
45 to 54	9,092	8.1%	16,447	12.1%	20,484	12.2%	21,696	11.6%	80.9%	5.9%
55 to 64	6,476	5.8%	8,980	6.6%	15,845	9.5%	19,596	10.5%	38.7%	23.7%
65 to 74	5,167	4.6%	5,973	4.4%	8,536	5.1%	11,761	6.3%	15.6%	37.8%
75 +	4,275	3.8%	5,666	4.2%	7,502	4.5%	8,371	4.5%	32.5%	11.6%

Population by Race/Ethnicity

Race and Ethnicity Percent Composition



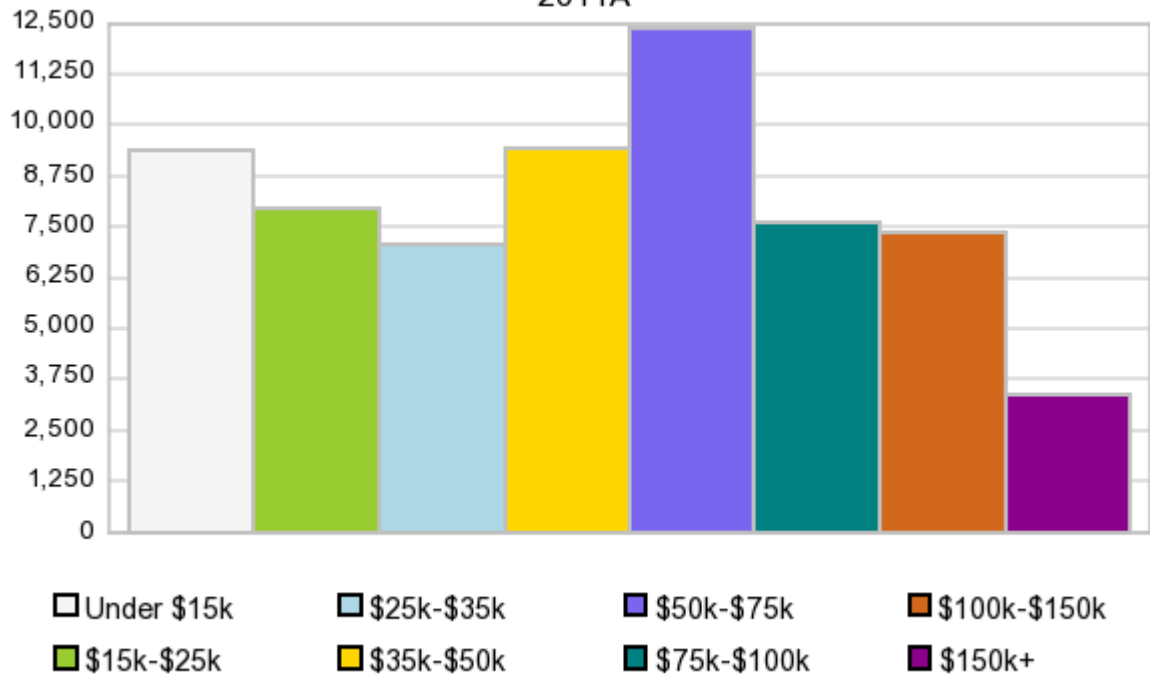
In 2011A, the predominant race/ethnicity category in this study area is **White**. The race & ethnicity category least represented in this geography is **American Indian, Alaska Native**.

A: White
 B: Asian Pac Islr
 C: Black
 D: Hispanic
 E: Amer Indian or Alaska Native
 F: Other or Multi Race

Race & Ethnicity	2000		2010		2011A		2016		Percent Change	
	Census	%	Census	%	Estimate	%	Projection	%	2000 to 2010	2011 to 2016
White	115,714	85.4%	134,621	82.8%	138,374	82.6%	153,051	82.0%	16.3%	10.6%
Black	11,572	8.5%	15,111	9.3%	15,815	9.4%	18,715	10.0%	30.6%	18.3%
American Indian or Alaska Native	567	0.4%	624	0.4%	641	0.4%	709	0.4%	10.1%	10.6%
Asian/Hawaiian/PI	4,057	3.0%	6,237	3.8%	6,444	3.8%	7,261	3.9%	53.7%	12.7%
Some Other Race	931	0.7%	1,476	0.9%	1,697	1.0%	1,917	1.0%	58.5%	13.0%
Two or More Races	2,613	1.9%	4,573	2.8%	4,548	2.7%	5,102	2.7%	75.0%	12.2%
Hispanic Ethnicity	2,413	1.8%	4,895	3.0%	5,375	3.2%	7,277	3.9%	102.9%	35.4%
Not Hispanic or Latino	133,041	98.2%	157,747	97.0%	162,140	96.8%	179,477	96.1%	18.6%	10.7%

Households by Income

Households by Income Group 2011A



In 2011A the predominant household income category in this study area is **\$50K - \$75K**, and the income group that is least represented in this geography is **\$150K +**.

HH Income Categories*

HH Income Categories*	1990 Census		2000 Census		2011A Estimate		2016 Projection		Percent Change	
		%		%		%		%	1990 to 2000	2011 to 2016
\$0 - \$15,000	12,195	29.1%	9,835	18.5%	9,414	14.6%	9,084	13.7%	-19.4%	-3.5%
\$15,000 - \$24,999	8,105	19.3%	7,743	14.6%	7,945	12.3%	7,748	11.7%	-4.5%	-2.5%
\$25,000 - \$34,999	6,842	16.3%	7,185	13.5%	7,038	10.9%	6,596	10.0%	5.0%	-6.3%
\$35,000 - \$49,999	6,675	15.9%	8,630	16.3%	9,430	14.6%	9,124	13.8%	29.3%	-3.2%
\$50,000 - \$74,999	5,554	13.2%	9,913	18.7%	12,369	19.2%	12,692	19.2%	78.5%	2.6%
\$75,000 - \$99,999	1,443	3.4%	4,883	9.2%	7,590	11.8%	8,320	12.6%	238.4%	9.6%
\$100,000 - \$149,999	682	1.6%	3,321	6.3%	7,335	11.4%	8,707	13.2%	387.0%	18.7%
\$150,000 +	428	1.0%	1,584	3.0%	3,387	5.3%	3,923	5.9%	270.1%	15.8%
Average Hhld Income	\$32,709		\$49,573		\$62,540		\$69,379		51.6%	10.9%
Median Hhld Income	\$25,846		\$37,757		\$47,022		\$50,878		46.1%	8.2%
Per Capita Income	\$12,656		\$19,431		\$25,295		\$25,846		53.5%	2.2%

*This Census 2010 data has not yet been released

Current year data is for the year **2011**, 5 year projected data is for the year **2016**. More About Our Data.
Demographic data ' 2011 by Experian/Applied Geographic Solutions.

Business List data ' 2011 by D&B^{fi}. All rights reserved. All D&B information is powered by DUNSRight™, D&B's Quality Process.

' 2011. DDR is brought to you by Alteryx, Inc.

Alteryx, DemographicsNow.com and the Alteryx and DemographicsNow.com logos are trademarks of Alteryx, Inc. All rights reserved.

Privacy Statement | License Agreement