



Date: 05/01/12

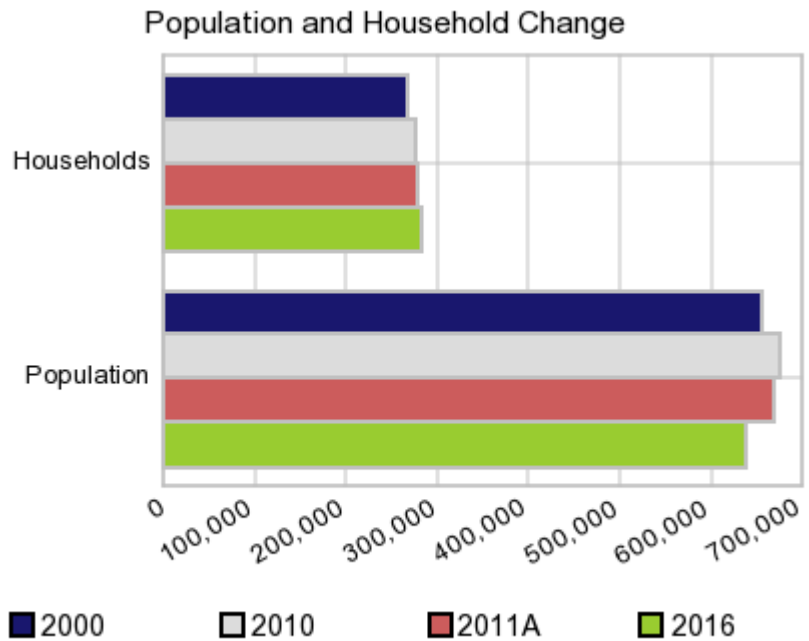
Current Geography Selection: (1 Selected) Counties: Jackson County

## Executive Summary Report with Charts

### Population Demographics:

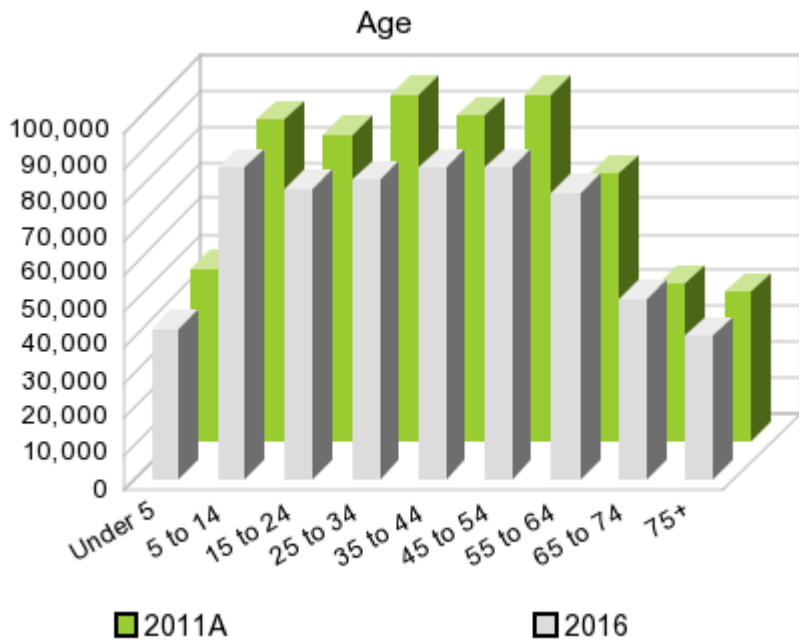
The number of households in the study area in 2000 was **266,294** and changed to **274,804** in 2010, representing a change of **3.2%**. The household count in 2011A was **276,419** and the household projection for 2016 is **282,785**, a change of **2.3%**.

The population in the study area in 2000 was **654,880** and in 2010 it was **674,158**, roughly a **2.9%** change. The population in 2011A was **667,070** and the projection for 2016 is **638,670** representing a change of **-4.3%**.



	2000 Census	2010 Census	2011A Estimate	2016 Projection	Percent Change	
					2000 to 2010	2011 to 2016
Total Population	654,880	674,158	667,070	638,670	2.9%	-4.3%
Total Households	266,294	274,804	276,419	282,785	8.8%	2.3%

### Population by Age



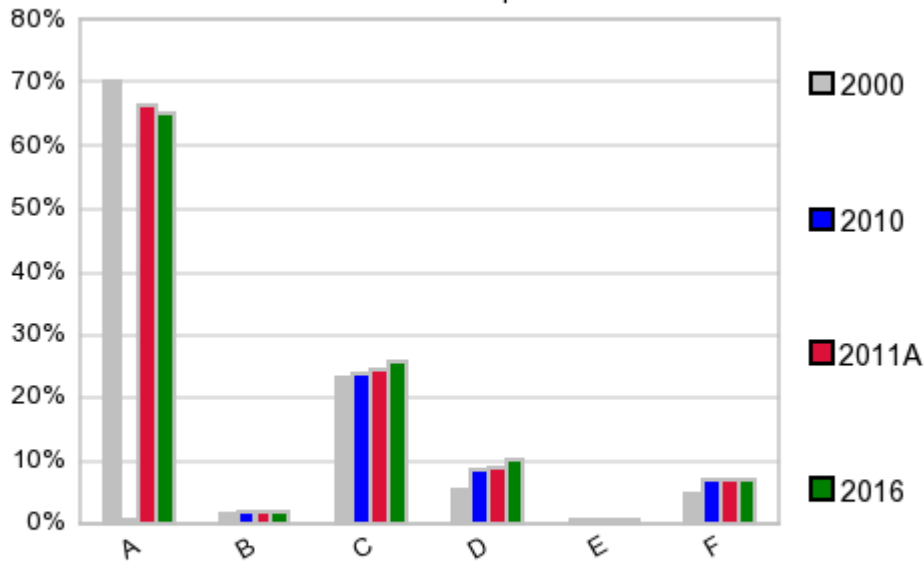
In 1990, the median age of the total population in the study area was **33**, and in 2000, it was **35**. The median age in 2011A is **37** and it is predicted to change in five years to **38** years. In 2011A, females represented **51.7%** of the population with a median age of **38** and males represented **48.3%** of the population with a median age of **35** years. In 2011A, the most prominent age group in this geography is **Age 45 to 54** years. The age group least represented in this geography is **75 +** years.

**Age Groups\***

	1990		2000		2011A		2016		Percent Change	
	Census	%	Census	%	Estimate	%	Projection	%	1990 to 2000	2011 to 2016
0 to 4	48,163	7.6%	45,894	7.0%	48,035	7.2%	42,218	6.6%	-4.7%	-12.1%
5 to 14	88,205	13.9%	95,309	14.6%	89,589	13.4%	87,044	13.6%	8.1%	-2.8%
15 to 19	41,669	6.6%	44,831	6.9%	43,511	6.5%	40,819	6.4%	7.6%	-6.2%
20 to 24	44,160	7.0%	42,528	6.5%	41,983	6.3%	40,457	6.3%	-3.7%	-3.6%
25 to 34	116,422	18.4%	97,129	14.8%	96,547	14.5%	83,575	13.1%	-16.6%	-13.4%
35 to 44	93,474	14.8%	106,336	16.2%	90,829	13.6%	86,924	13.6%	13.8%	-4.3%
45 to 54	63,287	10.0%	86,200	13.2%	96,629	14.5%	87,184	13.7%	36.2%	-9.8%
55 to 64	55,350	8.7%	54,672	8.3%	74,598	11.2%	80,235	12.6%	-1.2%	7.6%
65 to 74	46,023	7.3%	42,655	6.5%	43,895	6.6%	50,344	7.9%	-7.3%	14.7%
75 +	36,450	5.8%	39,326	6.0%	41,471	6.2%	39,883	6.2%	7.9%	-3.8%

**Population by Race/Ethnicity**

### Race and Ethnicity Percent Composition



In 2011A, the predominant race/ethnicity category in this study area is **White**. The race & ethnicity category least represented in this geography is **American Indian, Alaska Native**.

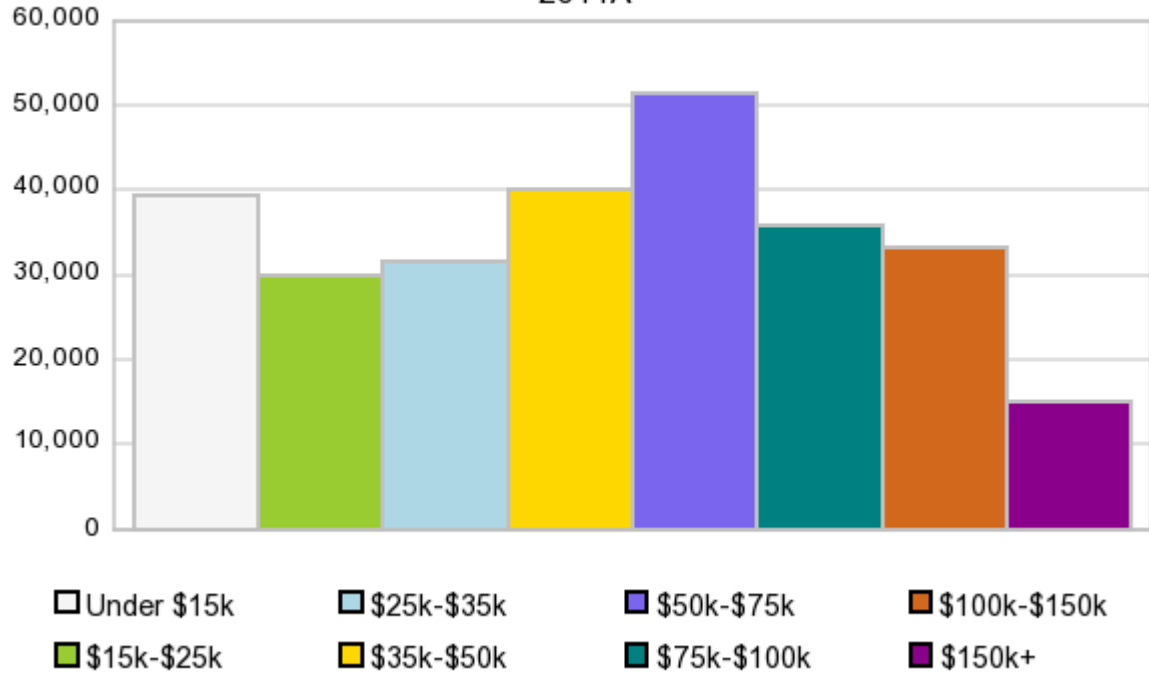
A: White  
 B: Asian Pac Islr  
 C: Black  
 D: Hispanic  
 E: Amer Indian or Alaska Native  
 F: Other or Multi Race

Race & Ethnicity	2000		2010		2011A		2016		Percent Change	
	Census	%	Census	%	Estimate	%	Projection	%	2000 to 2010	2011 to 2016
White	459,061	70.1%	451,073	66.9%	443,965	66.6%	416,283	65.2%	-1.7%	-6.2%
Black	152,391	23.3%	161,367	23.9%	162,017	24.3%	163,844	25.7%	5.9%	1.1%
American Indian or Alaska Native	3,168	0.5%	3,352	0.5%	3,303	0.5%	3,104	0.5%	5.8%	-6.0%
Asian/Hawaiian/PI	9,580	1.5%	12,365	1.8%	12,236	1.8%	11,709	1.8%	29.1%	-4.3%
Some Other Race	15,914	2.4%	25,315	3.8%	21,828	3.3%	20,747	3.3%	59.1%	-5.0%
Two or More Races	14,766	2.3%	20,686	3.1%	23,730	3.6%	22,994	3.6%	40.1%	-3.1%
Hispanic Ethnicity	35,160	5.4%	56,434	8.4%	58,122	8.7%	64,722	10.1%	60.5%	11.4%
Not Hispanic or Latino	619,720	94.6%	617,724	91.6%	608,951	91.3%	573,947	89.9%	-0.3%	-5.7%

### Households by Income

### Households by Income Group 2011A

In 2011A the predominant household income category in this study area is **\$50K - \$75K**, and the income group that is least represented in this geography is **\$150K +**.



#### HH Income Categories\*

	1990 Census		2000 Census		2011A Estimate		2016 Projection		Percent Change	
	Count	%	Count	%	Count	%	Count	%	1990 to 2000	2000 to 2011
\$0 - \$15,000	64,863	25.7%	43,632	16.4%	39,335	14.2%	39,042	13.8%	-32.7%	-0.7%
\$15,000 - \$24,999	47,220	18.7%	36,366	13.7%	29,906	10.8%	28,572	10.1%	-23.0%	-4.5%
\$25,000 - \$34,999	43,004	17.0%	38,397	14.4%	31,597	11.4%	29,711	10.5%	-10.7%	-6.0%
\$35,000 - \$49,999	46,375	18.4%	46,614	17.5%	40,174	14.5%	38,209	13.5%	0.5%	-4.9%
\$50,000 - \$74,999	35,151	13.9%	52,120	19.6%	51,306	18.6%	50,820	18.0%	48.3%	-0.9%
\$75,000 - \$99,999	9,170	3.6%	25,643	9.6%	35,657	12.9%	39,435	14.0%	179.6%	10.6%
\$100,000 - \$149,999	4,413	1.7%	16,108	6.1%	33,235	12.0%	39,440	13.9%	265.0%	18.7%
\$150,000 +	2,308	0.9%	7,414	2.8%	15,199	5.5%	17,562	6.2%	221.2%	15.5%
Average Hhld Income	\$34,197		\$50,541		\$62,812		\$69,467		47.8%	10.6%
Median Hhld Income	\$27,927		\$39,345		\$48,914		\$52,310		40.9%	6.9%
Per Capita Income	\$13,734		\$20,552		\$26,407		\$31,214		49.6%	18.2%

\*This Census 2010 data has not yet been released

Current year data is for the year **2011**, 5 year projected data is for the year **2016**. More About Our Data.  
Demographic data © 2011 by Experian/Applied Geographic Solutions.

Business List data © 2011 by D&B®. All rights reserved. All D&B information is powered by DUNSRight™, D&B's Quality Process.

Alteryx, DemographicsNow.com and the Alteryx and DemographicsNow.com logos are trademarks of Alteryx, Inc.  
All rights reserved.

Privacy Statement | License Agreement