



Date: 05/01/12

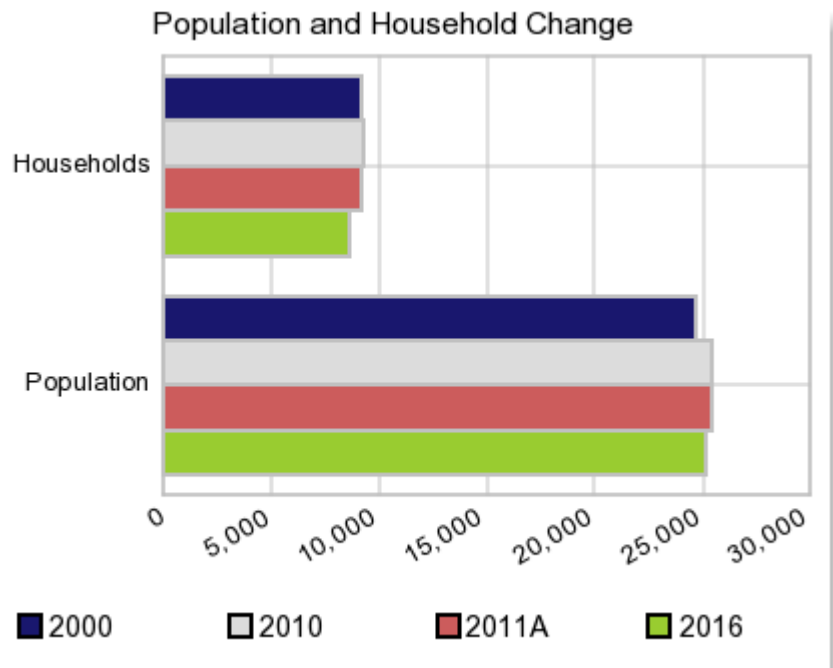
Current Geography Selection: (1 Selected) Counties: Randolph County

Executive Summary Report with Charts

Population Demographics:

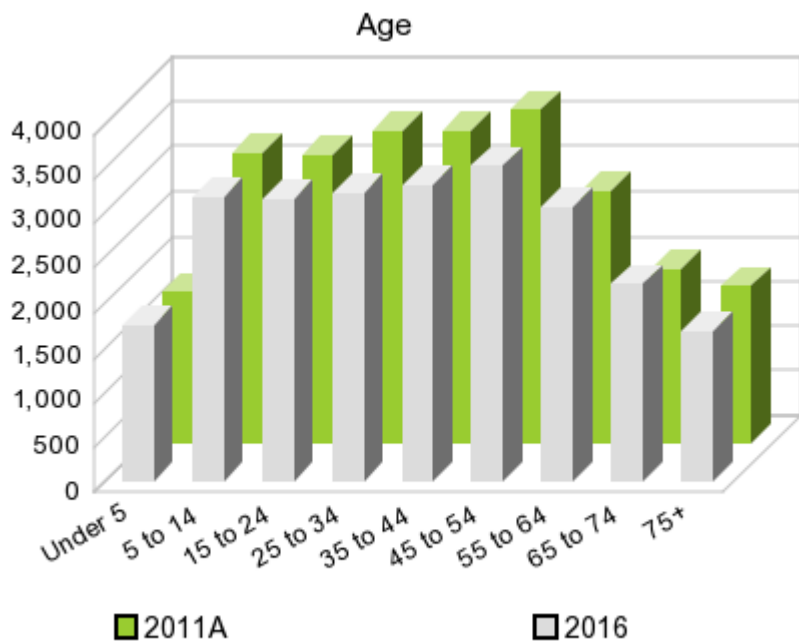
The number of households in the study area in 2000 was **9,199** and changed to **9,342** in 2010, representing a change of **1.6%**. The household count in 2011A was **9,190** and the household projection for 2016 is **8,605**, a change of **-6.4%**.

The population in the study area in 2000 was **24,663** and in 2010 it was **25,414**, roughly a **3.0%** change. The population in 2011A was **25,356** and the projection for 2016 is **25,100** representing a change of **-1.0%**.



	2000 Census	2010 Census	2011A Estimate	2016 Projection	Percent Change	
					2000 to 2010	2011 to 2016
Total Population	24,663	25,414	25,356	25,100	3.0%	-1.0%
Total Households	9,199	9,342	9,190	8,605	4.5%	-6.4%

Population by Age



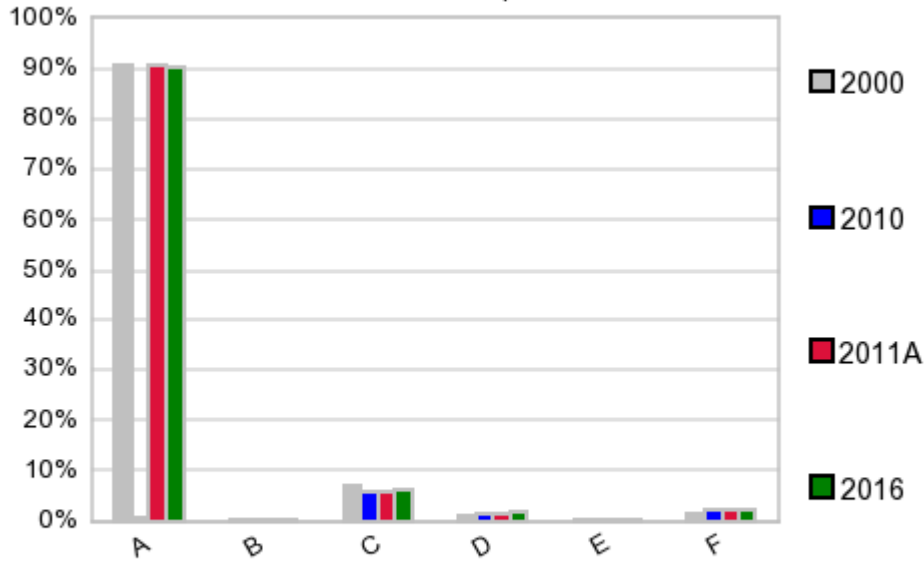
In 1990, the median age of the total population in the study area was **34**, and in 2000, it was **37**. The median age in 2011A is **38** and it is predicted to change in five years to **39** years. In 2011A, females represented **48.5%** of the population with a median age of **40** and males represented **51.5%** of the population with a median age of **37** years. In 2011A, the most prominent age group in this geography is **Age 45 to 54** years. The age group least represented in this geography is **18 to 24** years.

Age Groups*

	1990 Census		2000 Census		2011A Estimate		2016 Projection		Percent Change	
		%		%		%		%	1990 to 2000	2011 to 2016
0 to 4	1,561	6.4%	1,570	6.4%	1,688	6.7%	1,741	6.9%	0.6%	3.1%
5 to 14	3,623	14.9%	3,313	13.4%	3,246	12.8%	3,178	12.7%	-8.6%	-2.1%
15 to 19	1,609	6.6%	1,739	7.1%	1,632	6.4%	1,583	6.3%	8.1%	-3.0%
20 to 24	1,646	6.8%	1,620	6.6%	1,599	6.3%	1,573	6.3%	-1.6%	-1.6%
25 to 34	3,994	16.4%	3,317	13.5%	3,482	13.7%	3,218	12.8%	-17.0%	-7.6%
35 to 44	3,525	14.5%	3,913	15.9%	3,485	13.7%	3,304	13.2%	11.0%	-5.2%
45 to 54	2,358	9.7%	3,390	13.7%	3,717	14.7%	3,528	14.1%	43.8%	-5.1%
55 to 64	2,057	8.4%	2,140	8.7%	2,807	11.1%	3,076	12.3%	4.0%	9.6%
65 to 74	1,946	8.0%	1,820	7.4%	1,954	7.7%	2,216	8.8%	-6.5%	13.4%
75 +	2,051	8.4%	1,841	7.5%	1,741	6.9%	1,680	6.7%	-10.2%	-3.5%

Population by Race/Ethnicity

Race and Ethnicity Percent Composition



In 2011A, the predominant race/ethnicity category in this study area is **White**. The race & ethnicity category least represented in this geography is **American Indian, Alaska Native**.

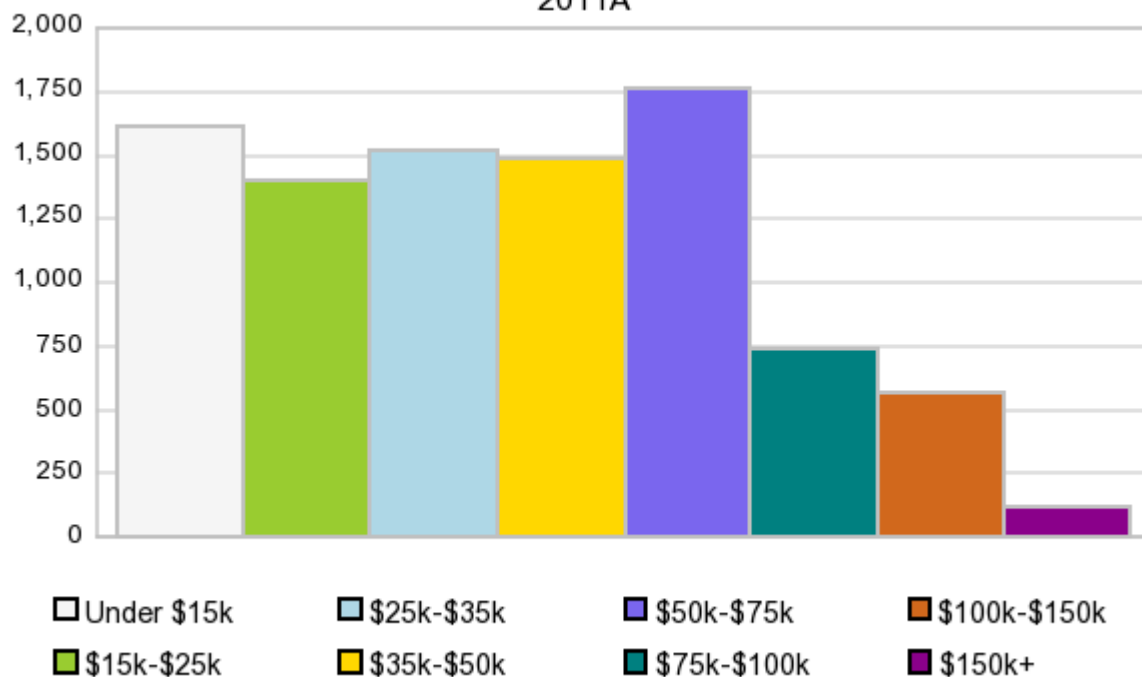
A: White
 B: Asian Pac Islr
 C: Black
 D: Hispanic
 E: Amer Indian or Alaska Native
 F: Other or Multi Race

Race & Ethnicity	2000 Census		2010 Census		2011A Estimate		2016 Projection		Percent Change	
	Count	%	Count	%	Count	%	Count	%	2000 to 2010	2011 to 2016
White	22,339	90.6%	23,133	91.0%	23,049	90.9%	22,706	90.5%	3.6%	-1.5%
Black	1,734	7.0%	1,490	5.9%	1,514	6.0%	1,599	6.4%	-14.1%	5.6%
American Indian or Alaska Native	118	0.5%	74	0.3%	74	0.3%	74	0.3%	-37.3%	0.0%
Asian/Hawaiian/PI	103	0.4%	109	0.4%	110	0.4%	112	0.4%	5.8%	1.8%
Some Other Race	59	0.2%	73	0.3%	104	0.4%	106	0.4%	23.7%	1.9%
Two or More Races	310	1.3%	535	2.1%	505	2.0%	503	2.0%	72.6%	-0.4%
Hispanic Ethnicity	282	1.1%	413	1.6%	419	1.7%	443	1.8%	46.5%	5.7%
Not Hispanic or Latino	24,381	98.9%	25,001	98.4%	24,937	98.4%	24,657	98.2%	2.5%	-1.1%

Households by Income

Households by Income Group 2011A

In 2011A the predominant household income category in this study area is **\$50K - \$75K**, and the income group that is least represented in this geography is **\$150K +**.



HH Income Categories*

	1990 Census		2000 Census		2011A Estimate		2016 Projection		Percent Change	
		%		%		%		%	1990 to 2000	2011 to 2016
\$0 - \$15,000	3,148	35.2%	1,945	21.1%	1,614	17.6%	1,415	16.4%	-38.2%	-12.3%
\$15,000 - \$24,999	2,011	22.5%	1,645	17.9%	1,395	15.2%	1,210	14.1%	-18.2%	-13.3%
\$25,000 - \$34,999	1,551	17.3%	1,504	16.4%	1,522	16.6%	1,416	16.5%	-3.0%	-7.0%
\$35,000 - \$49,999	1,348	15.1%	1,774	19.3%	1,480	16.1%	1,290	15.0%	31.6%	-12.8%
\$50,000 - \$74,999	654	7.3%	1,458	15.9%	1,763	19.2%	1,747	20.3%	122.9%	-0.9%
\$75,000 - \$99,999	158	1.8%	534	5.8%	740	8.1%	785	9.1%	238.0%	6.1%
\$100,000 - \$149,999	50	0.6%	245	2.7%	564	6.1%	635	7.4%	390.0%	12.6%
\$150,000 +	28	0.3%	94	1.0%	112	1.2%	107	1.2%	235.7%	-4.5%
Average Hhld Income	\$25,955		\$38,653		\$44,567		\$47,344		48.9%	6.2%
Median Hhld Income	\$21,511		\$31,576		\$35,525		\$37,435		46.8%	5.4%
Per Capita Income	\$10,921		\$14,417		\$17,621		\$17,940		32.0%	1.8%

*This Census 2010 data has not yet been released

Current year data is for the year **2011**, 5 year projected data is for the year **2016**. More About Our Data.
Demographic data ' 2011 by Experian/Applied Geographic Solutions.

Business List data ' 2011 by D&B^{fi}. All rights reserved. All D&B information is powered by DUNSRight™, D&B's Quality Process.

' 2011. DDR is brought to you by Alteryx, Inc.

Alteryx, DemographicsNow.com and the Alteryx and DemographicsNow.com logos are trademarks of Alteryx, Inc. All rights reserved.

Privacy Statement | License Agreement