



Date: 05/01/12

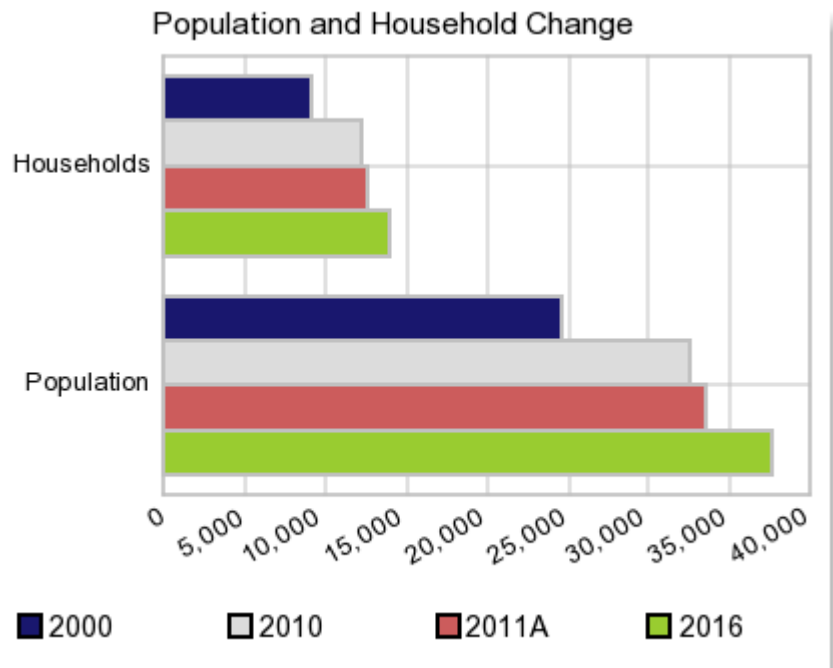
Current Geography Selection: (1 Selected) Counties: Warren County

## Executive Summary Report with Charts

### Population Demographics:

The number of households in the study area in 2000 was **9,185** and changed to **12,339** in 2010, representing a change of **34.3%**. The household count in 2011A was **12,668** and the household projection for 2016 is **13,982**, a change of **10.4%**.

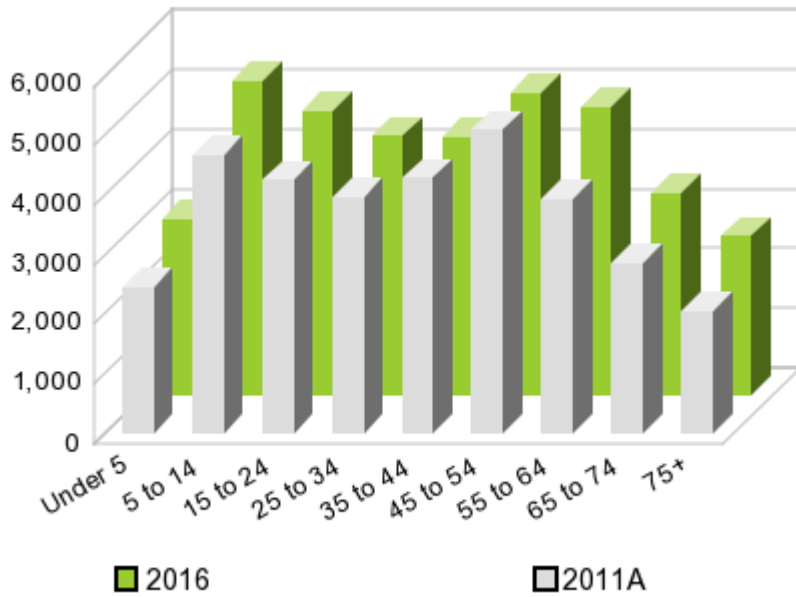
The population in the study area in 2000 was **24,525** and in 2010 it was **32,513**, roughly a **32.6%** change. The population in 2011A was **33,530** and the projection for 2016 is **37,561** representing a change of **12.0%**.



	2000 Census	2010 Census	2011A Estimate	2016 Projection	Percent Change	
					2000 to 2010	2011 to 2016
Total Population	24,525	32,513	33,530	37,561	32.6%	12.0%
Total Households	9,185	12,339	12,668	13,982	74.5%	10.4%

### Population by Age

### Age



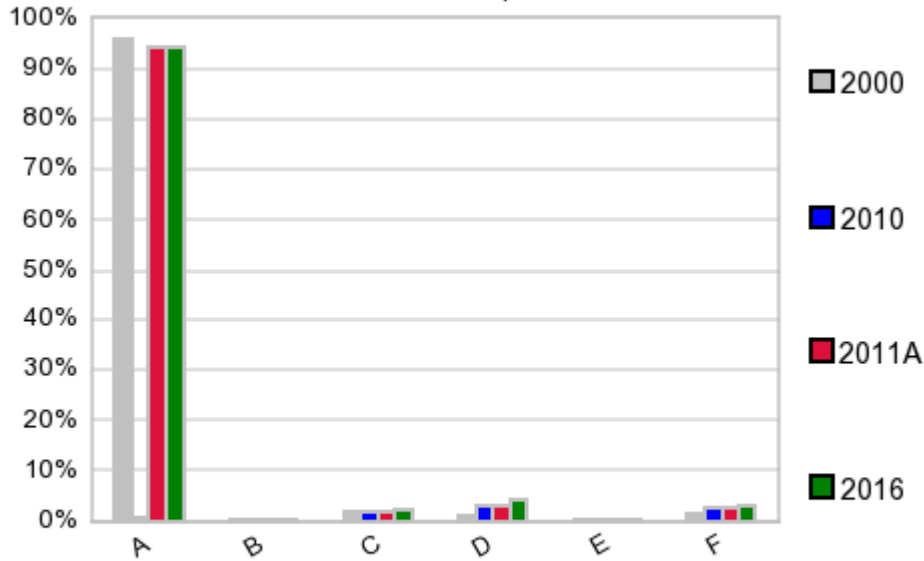
In 1990, the median age of the total population in the study area was **34**, and in 2000, it was **38**. The median age in 2011A is **39** and it is predicted to change in five years to **38** years. In 2011A, females represented **50.4%** of the population with a median age of **39** and males represented **49.6%** of the population with a median age of **38** years. In 2011A, the most prominent age group in this geography is **Age 45 to 54** years. The age group least represented in this geography is **75 +** years.

#### Age Groups\*

	1990 Census		2000 Census		2011A Estimate		2016 Projection		Percent Change	
		%		%		%		%	1990 to 2000	2011 to 2016
0 to 4	1,598	8.2%	1,602	6.5%	2,454	7.3%	2,961	7.9%	0.3%	20.7%
5 to 14	3,106	15.9%	3,831	15.6%	4,664	13.9%	5,243	14.0%	23.3%	12.4%
15 to 19	1,257	6.4%	1,774	7.2%	2,199	6.6%	2,418	6.4%	41.1%	10.0%
20 to 24	1,091	5.6%	1,253	5.1%	2,063	6.2%	2,357	6.3%	14.8%	14.3%
25 to 34	3,164	16.2%	2,800	11.4%	3,953	11.8%	4,344	11.6%	-11.5%	9.9%
35 to 44	2,753	14.1%	4,268	17.4%	4,275	12.8%	4,320	11.5%	55.0%	1.1%
45 to 54	2,122	10.9%	3,216	13.1%	5,077	15.1%	5,061	13.5%	51.6%	-0.3%
55 to 64	1,741	8.9%	2,595	10.6%	3,936	11.7%	4,835	12.9%	49.1%	22.8%
65 to 74	1,559	8.0%	1,849	7.5%	2,870	8.6%	3,368	9.0%	18.6%	17.4%
75 +	1,143	5.9%	1,337	5.5%	2,035	6.1%	2,649	7.1%	17.0%	30.2%

#### Population by Race/Ethnicity

### Race and Ethnicity Percent Composition



In 2011A, the predominant race/ethnicity category in this study area is **White**. The race & ethnicity category least represented in this geography is **American Indian, Alaska Native**.

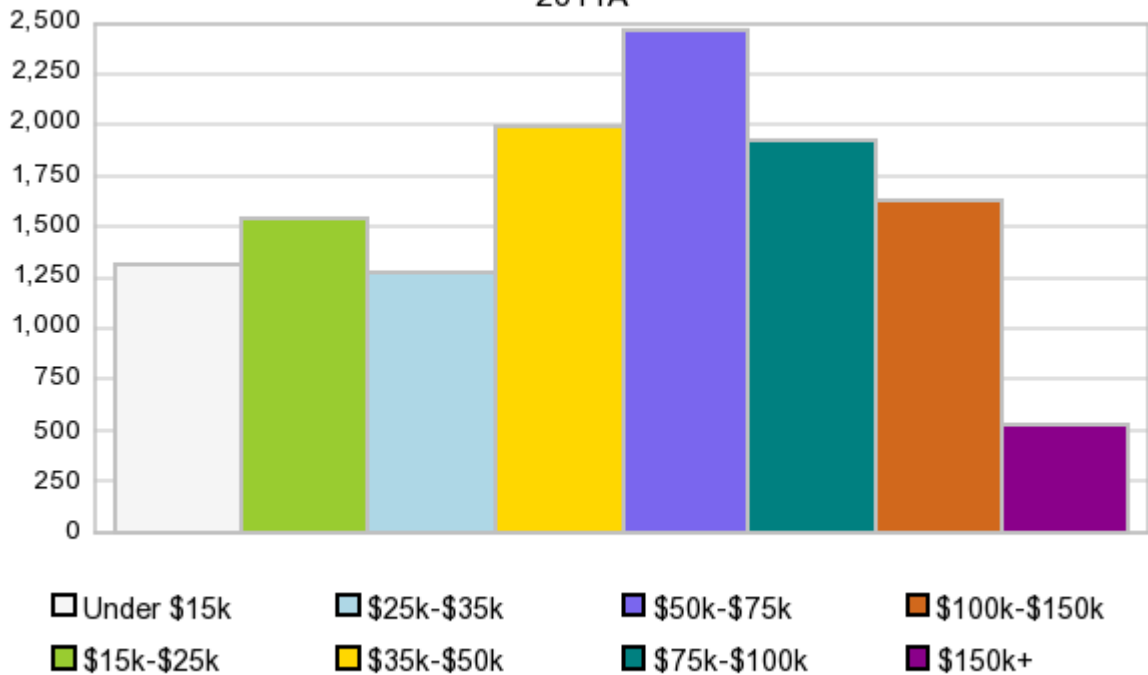
A: White  
 B: Asian Pac Islr  
 C: Black  
 D: Hispanic  
 E: Amer Indian or Alaska Native  
 F: Other or Multi Race

Race & Ethnicity	2000		2010		2011A		2016		Percent Change	
	Census	%	Census	%	Estimate	%	Projection	%	2000 to 2010	2011 to 2016
White	23,517	95.9%	30,685	94.4%	31,622	94.3%	35,328	94.1%	30.5%	11.7%
Black	476	1.9%	621	1.9%	658	2.0%	808	2.2%	30.5%	22.8%
American Indian or Alaska Native	110	0.5%	133	0.4%	137	0.4%	154	0.4%	20.9%	12.4%
Asian/Hawaiian/PI	63	0.3%	147	0.5%	153	0.5%	176	0.5%	133.3%	15.0%
Some Other Race	109	0.4%	352	1.1%	262	0.8%	283	0.8%	222.9%	8.0%
Two or More Races	250	1.0%	575	1.8%	699	2.1%	810	2.2%	130.0%	15.9%
Hispanic Ethnicity	314	1.3%	957	2.9%	1,072	3.2%	1,528	4.1%	204.8%	42.5%
Not Hispanic or Latino	24,211	98.7%	31,556	97.1%	32,458	96.8%	36,032	95.9%	30.3%	11.0%

### Households by Income

## Households by Income Group 2011A

In 2011A the predominant household income category in this study area is **\$50K - \$75K**, and the income group that is least represented in this geography is **\$150K +**.



### HH Income Categories\*

HH Income Category	1990 Census		2000 Census		2011A Estimate		2016 Projection		Percent Change	
	Count	%	Count	%	Count	%	Count	%	1990 to 2000	2011 to 2016
\$0 - \$15,000	1,864	26.4%	1,243	13.5%	1,318	10.4%	1,312	9.4%	-33.3%	-0.5%
\$15,000 - \$24,999	1,222	17.3%	1,200	13.1%	1,532	12.1%	1,627	11.6%	-1.8%	6.2%
\$25,000 - \$34,999	1,250	17.7%	1,355	14.8%	1,281	10.1%	1,189	8.5%	8.4%	-7.2%
\$35,000 - \$49,999	1,473	20.8%	1,779	19.4%	1,992	15.7%	2,029	14.5%	20.8%	1.9%
\$50,000 - \$74,999	1,012	14.3%	1,832	19.9%	2,460	19.4%	2,626	18.8%	81.0%	6.7%
\$75,000 - \$99,999	126	1.8%	1,071	11.7%	1,931	15.2%	2,319	16.6%	750.0%	20.1%
\$100,000 - \$149,999	90	1.3%	475	5.2%	1,632	12.9%	2,222	15.9%	427.8%	36.2%
\$150,000 +	24	0.3%	230	2.5%	522	4.1%	654	4.7%	858.3%	25.3%
Average Hhld Income	\$32,286		\$52,065		\$65,372		\$72,915		61.3%	11.5%
Median Hhld Income	\$28,939		\$41,228		\$51,695		\$57,659		42.5%	11.5%
Per Capita Income	\$11,738		\$19,499		\$24,902		\$27,352		66.1%	9.8%

\*This Census 2010 data has not yet been released

Current year data is for the year **2011**, 5 year projected data is for the year **2016**. More About Our Data.  
Demographic data ' 2011 by Experian/Applied Geographic Solutions.

Business List data ' 2011 by D&B<sup>fi</sup>. All rights reserved. All D&B information is powered by DUNSRight™, D&B's Quality Process.

**' 2011. DDR is brought to you by Alteryx, Inc.**

Alteryx, DemographicsNow.com and the Alteryx and DemographicsNow.com logos are trademarks of Alteryx, Inc. All rights reserved.

Privacy Statement | License Agreement