



Date: 04/30/12

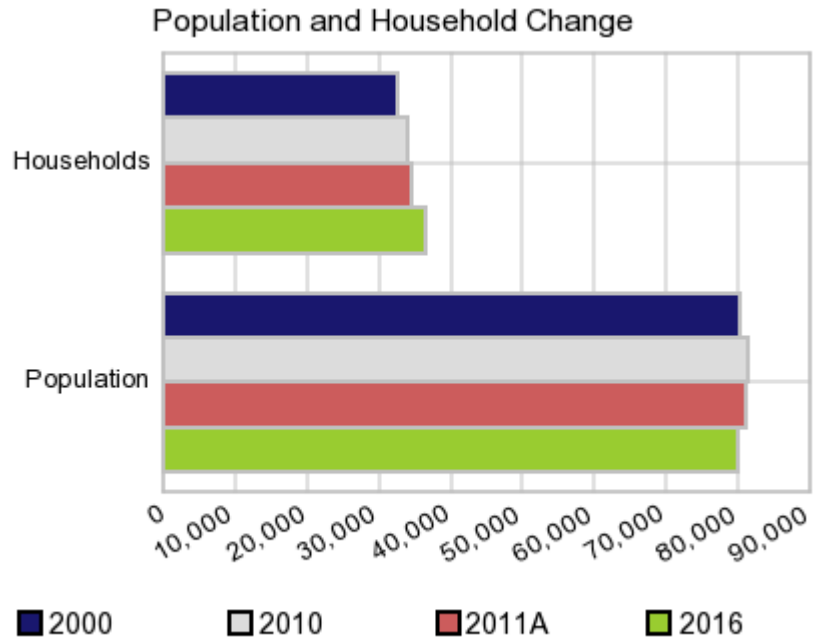
Current Geography Selection: (1 Selected) Counties: Cascade County

Executive Summary Report with Charts

Population Demographics:

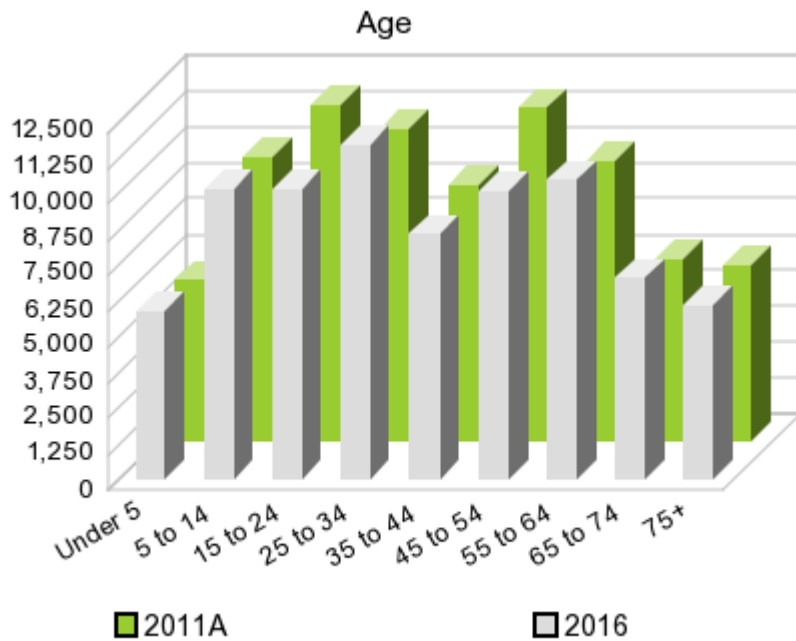
The number of households in the study area in 2000 was **32,547** and changed to **33,809** in 2010, representing a change of **3.9%**. The household count in 2011A was **34,306** and the household projection for 2016 is **36,261**, a change of **5.7%**.

The population in the study area in 2000 was **80,357** and in 2010 it was **81,327**, roughly a **1.2%** change. The population in 2011A was **81,063** and the projection for 2016 is **79,994** representing a change of **-1.3%**.



	2000 Census	2010 Census	2011A Estimate	2016 Projection	Percent Change	
					2000 to 2010	2011 to 2016
Total Population	80,357	81,327	81,063	79,994	1.2%	-1.3%
Total Households	32,547	33,809	34,306	36,261	12.2%	5.7%

Population by Age



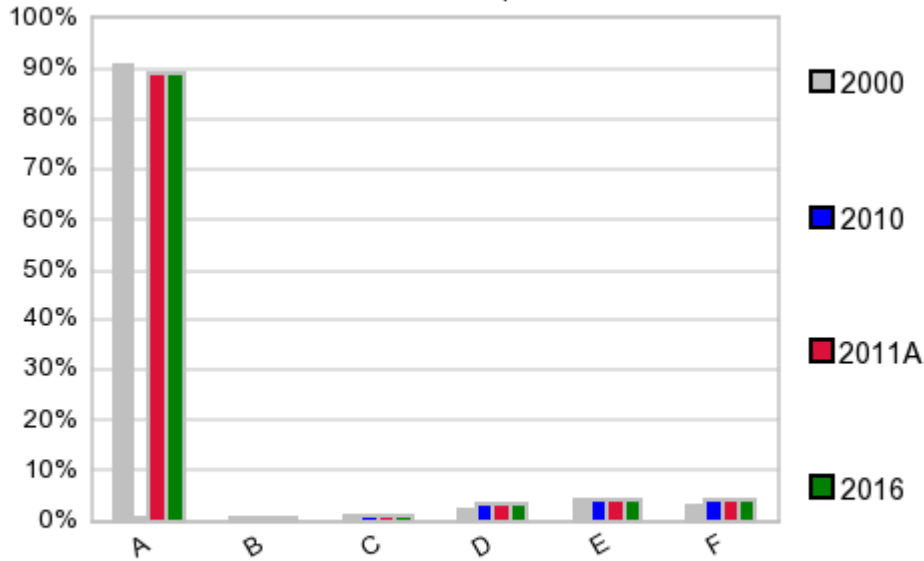
In 1990, the median age of the total population in the study area was **33**, and in 2000, it was **37**. The median age in 2011A is **38** and it is predicted to change in five years to **37** years. In 2011A, females represented **50.7%** of the population with a median age of **39** and males represented **49.3%** of the population with a median age of **36** years. In 2011A, the most prominent age group in this geography is **Age 45 to 54** years. The age group least represented in this geography is **15 to 19** years.

Age Groups*

	1990		2000		2011A		2016		Percent Change	
	Census	%	Census	%	Estimate	%	Projection	%	1990 to 2000	2011 to 2016
0 to 4	6,369	8.2%	5,337	6.6%	5,612	6.9%	5,883	7.4%	-16.2%	4.8%
5 to 14	12,191	15.7%	11,826	14.7%	9,954	12.3%	10,128	12.7%	-3.0%	1.7%
15 to 19	4,971	6.4%	6,001	7.5%	5,543	6.8%	4,823	6.0%	20.7%	-13.0%
20 to 24	5,097	6.6%	5,099	6.3%	6,206	7.7%	5,298	6.6%	0.0%	-14.6%
25 to 34	13,218	17.0%	9,880	12.3%	10,853	13.4%	11,670	14.6%	-25.3%	7.5%
35 to 44	11,319	14.6%	12,678	15.8%	8,943	11.0%	8,566	10.7%	12.0%	-4.2%
45 to 54	8,009	10.3%	10,720	13.3%	11,642	14.4%	10,078	12.6%	33.9%	-13.4%
55 to 64	6,672	8.6%	7,568	9.4%	9,818	12.1%	10,440	13.1%	13.4%	6.3%
65 to 74	5,623	7.2%	5,825	7.2%	6,338	7.8%	6,998	8.7%	3.6%	10.4%
75 +	4,215	5.4%	5,423	6.7%	6,144	7.6%	6,099	7.6%	28.7%	-0.7%

Population by Race/Ethnicity

Race and Ethnicity Percent Composition



In 2011A, the predominant race/ethnicity category in this study area is **White**.
The race & ethnicity category least represented in this geography is **Other**.

A: White
B: Asian Pac Islidr
C: Black
D: Hispanic
E: Amer Indian or Alaska Native
F: Other or Multi Race

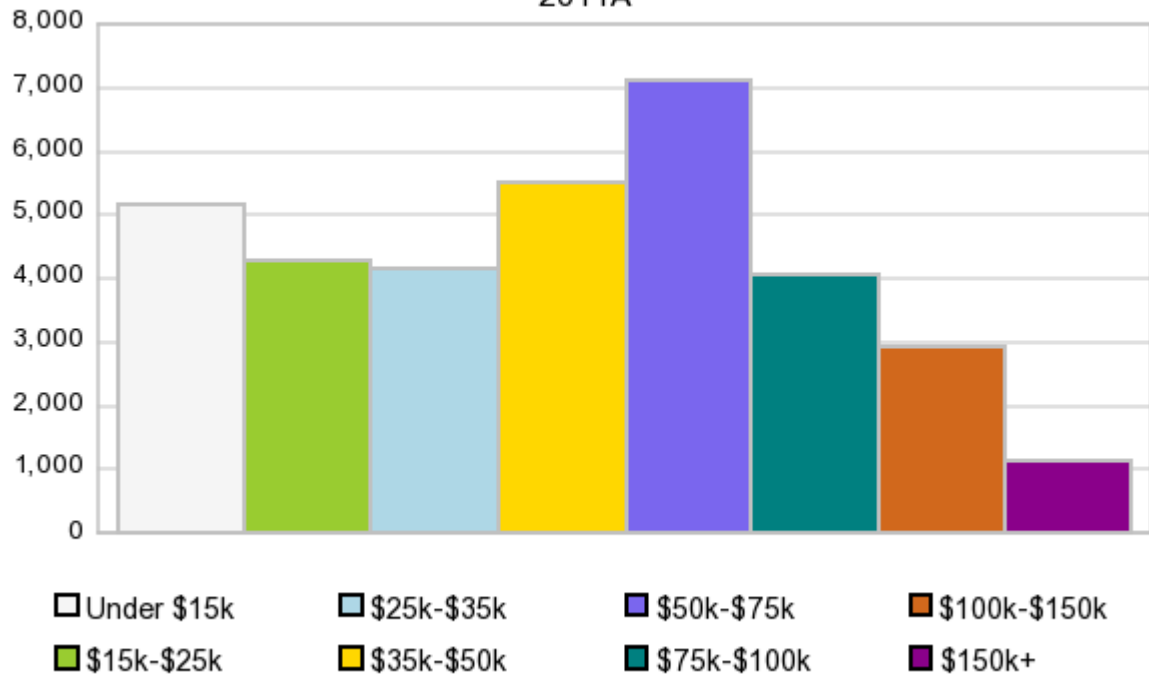
Race & Ethnicity

	2000		2010		2011A		2016		Percent Change	
	Census	%	Census	%	Estimate	%	Projection	%	2000 to 2010	2011 to 2016
White	72,897	90.7%	72,584	89.3%	72,315	89.2%	71,246	89.1%	-0.4%	-1.5%
Black	900	1.1%	1,010	1.2%	1,009	1.2%	1,004	1.3%	12.2%	-0.5%
American Indian or Alaska Native	3,394	4.2%	3,487	4.3%	3,503	4.3%	3,555	4.4%	2.7%	1.5%
Asian/Hawaiian/PI	719	0.9%	773	1.0%	771	1.0%	761	1.0%	7.5%	-1.3%
Some Other Race	547	0.7%	526	0.6%	708	0.9%	719	0.9%	-3.8%	1.6%
Two or More Races	1,900	2.4%	2,947	3.6%	2,757	3.4%	2,710	3.4%	55.1%	-1.7%
Hispanic Ethnicity	1,949	2.4%	2,711	3.3%	2,712	3.4%	2,689	3.4%	39.1%	-0.8%
Not Hispanic or Latino	78,408	97.6%	78,616	96.7%	78,349	96.7%	77,305	96.6%	0.3%	-1.3%

Households by Income

Households by Income Group
2011A

In 2011A the predominant household income category in this study area is **\$50K - \$75K**, and the income group that is least represented in this geography is **\$150K +**.



HH Income Categories*

	1990 Census		2000 Census		2011A Estimate		2016 Projection		Percent Change	
		%		%		%		%	1990 to 2000	2011 to 2016
\$0 - \$15,000	8,855	29.4%	6,564	20.2%	5,152	15.0%	4,825	13.3%	-25.9%	-6.3%
\$15,000 - \$24,999	7,093	23.5%	5,681	17.5%	4,279	12.5%	3,887	10.7%	-19.9%	-9.2%
\$25,000 - \$34,999	5,112	17.0%	4,958	15.2%	4,148	12.1%	3,998	11.0%	-3.0%	-3.6%
\$35,000 - \$49,999	4,984	16.5%	6,206	19.1%	5,491	16.0%	5,323	14.7%	24.5%	-3.1%
\$50,000 - \$74,999	2,708	9.0%	5,484	16.9%	7,119	20.8%	8,035	22.2%	102.5%	12.9%
\$75,000 - \$99,999	656	2.2%	1,897	5.8%	4,060	11.8%	5,134	14.2%	189.2%	26.5%
\$100,000 - \$149,999	439	1.5%	1,064	3.3%	2,922	8.5%	3,775	10.4%	142.4%	29.2%
\$150,000 +	261	0.9%	693	2.1%	1,137	3.3%	1,285	3.5%	165.5%	13.0%
Average Hhld Income	\$30,446		\$42,307		\$56,658		\$64,810		39.0%	14.4%
Median Hhld Income	\$23,740		\$33,144		\$44,527		\$50,249		39.6%	12.9%
Per Capita Income	\$12,046		\$17,136		\$25,454		\$30,980		42.3%	21.7%

*This Census 2010 data has not yet been released

Current year data is for the year **2011**, 5 year projected data is for the year **2016**. More About Our Data.
Demographic data © 2011 by Experian/Applied Geographic Solutions.

Business List data © 2011 by D&B®. All rights reserved. All D&B information is powered by DUNSRight™, D&B's Quality Process.

Alteryx, DemographicsNow.com and the Alteryx and DemographicsNow.com logos are trademarks of Alteryx, Inc.
All rights reserved.

[Privacy Statement](#) | [License Agreement](#)