



Date: 05/02/12

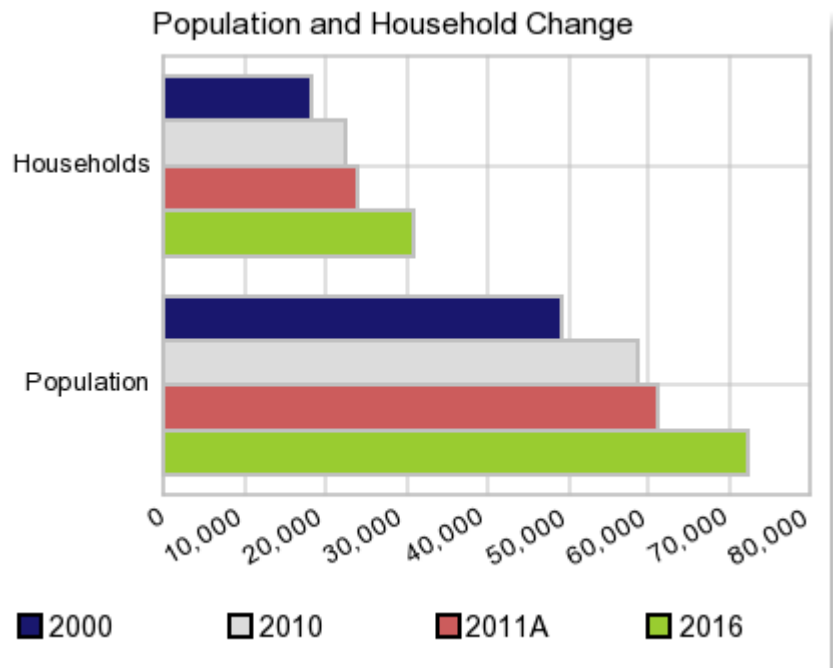
Current Geography Selection: (1 Selected) Counties: Duplin County

## Executive Summary Report with Charts

### Population Demographics:

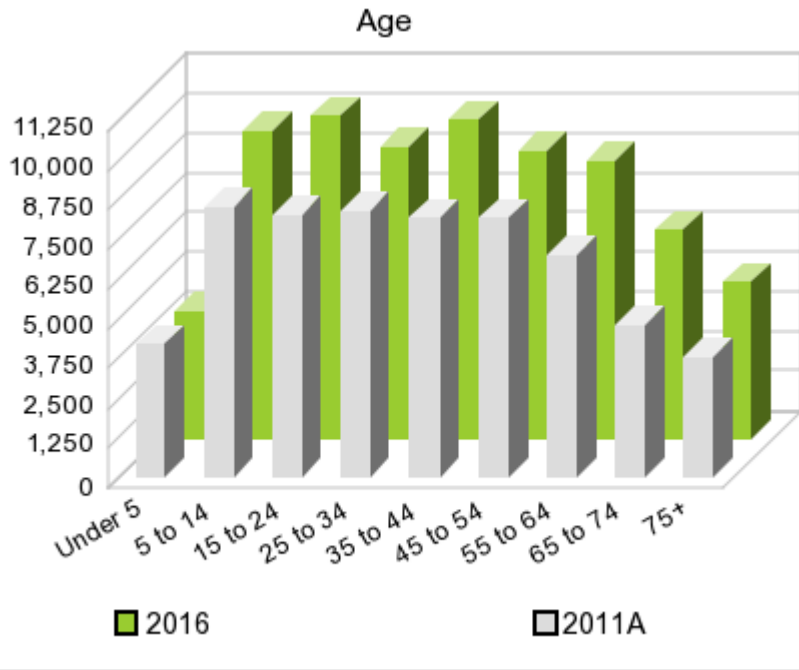
The number of households in the study area in 2000 was **18,267** and changed to **22,495** in 2010, representing a change of **23.1%**. The household count in 2011A was **24,131** and the household projection for 2016 is **30,729**, a change of **27.3%**.

The population in the study area in 2000 was **49,063** and in 2010 it was **58,505**, roughly a **19.2%** change. The population in 2011A was **61,258** and the projection for 2016 is **72,356** representing a change of **18.1%**.



	2000 Census	2010 Census	2011A Estimate	2016 Projection	Percent Change	
					2000 to 2010	2011 to 2016
Total Population	49,063	58,505	61,258	72,356	19.2%	18.1%
Total Households	18,267	22,495	24,131	30,729	50.7%	27.3%

### Population by Age



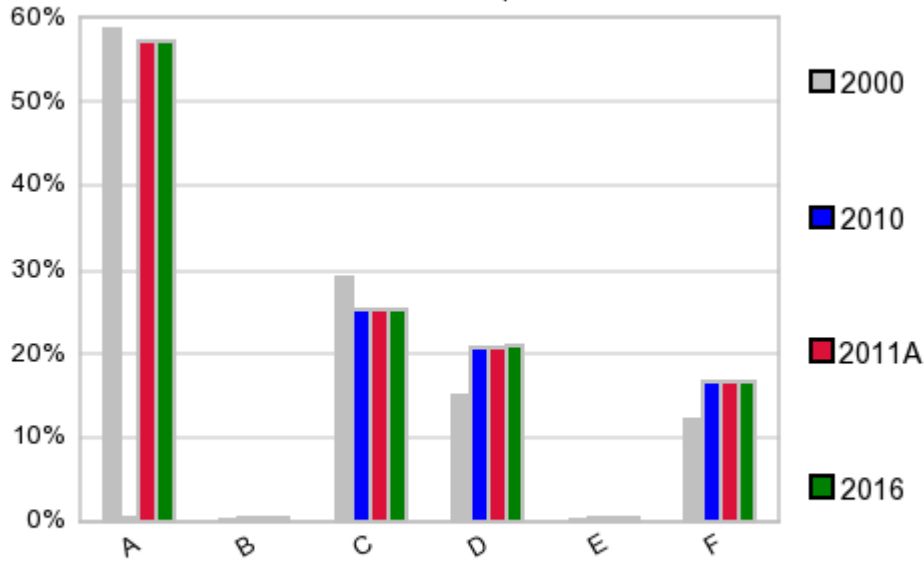
In 1990, the median age of the total population in the study area was **34**, and in 2000, it was **35**. The median age in 2011A is **36** and it is predicted to change in five years to **38** years. In 2011A, females represented **49.7%** of the population with a median age of **39** and males represented **50.3%** of the population with a median age of **34** years. In 2011A, the most prominent age group in this geography is **Age 5 to 14** years. The age group least represented in this geography is **75 +** years.

#### Age Groups\*

	1990		2000		2011A		2016		Percent Change	
	Census	%	Census	%	Estimate	%	Projection	%	1990 to 2000	2011 to 2016
0 to 4	2,770	6.9%	3,609	7.4%	4,196	6.9%	4,004	5.5%	30.3%	-4.6%
5 to 14	5,866	14.7%	7,102	14.5%	8,543	13.9%	9,699	13.4%	21.1%	13.5%
15 to 19	3,096	7.7%	3,341	6.8%	4,343	7.1%	5,107	7.1%	7.9%	17.6%
20 to 24	2,615	6.5%	3,460	7.1%	3,917	6.4%	5,031	7.0%	32.3%	28.4%
25 to 34	6,096	15.2%	7,067	14.4%	8,407	13.7%	9,158	12.7%	15.9%	8.9%
35 to 44	5,794	14.5%	7,332	14.9%	8,166	13.3%	10,049	13.9%	26.5%	23.1%
45 to 54	4,265	10.7%	6,293	12.8%	8,134	13.3%	9,063	12.5%	47.6%	11.4%
55 to 64	3,897	9.7%	4,543	9.3%	6,983	11.4%	8,748	12.1%	16.6%	25.3%
65 to 74	3,310	8.3%	3,507	7.1%	4,790	7.8%	6,539	9.0%	6.0%	36.5%
75 +	2,284	5.7%	2,809	5.7%	3,768	6.2%	4,953	6.8%	23.0%	31.5%

#### Population by Race/Ethnicity

### Race and Ethnicity Percent Composition



In 2011A, the predominant race/ethnicity category in this study area is **White**. The race & ethnicity category least represented in this geography is **Asian or Pacific Islander**.

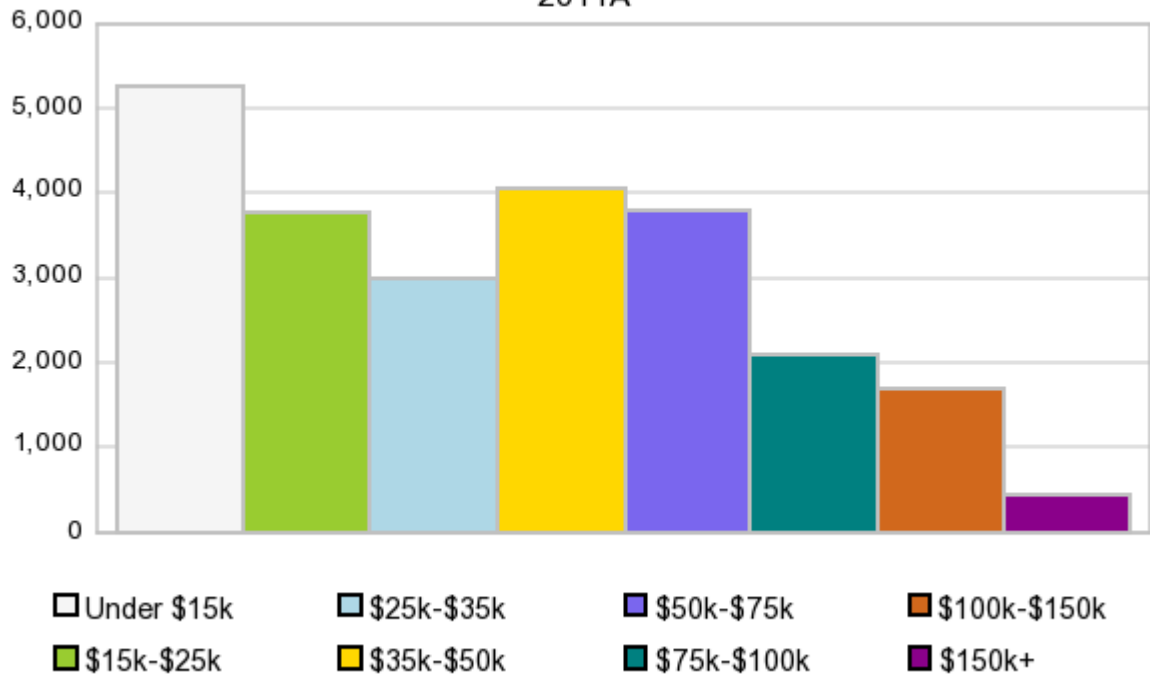
A: White  
 B: Asian Pac Islidr  
 C: Black  
 D: Hispanic  
 E: Amer Indian or Alaska Native  
 F: Other or Multi Race

Race & Ethnicity	2000		2010		2011A		2016		Percent Change	
	Census	%	Census	%	Estimate	%	Projection	%	2000 to 2010	2011 to 2016
White	28,785	58.7%	33,449	57.2%	35,019	57.2%	41,398	57.2%	16.2%	18.2%
Black	14,198	28.9%	14,773	25.3%	15,473	25.3%	18,257	25.2%	4.1%	18.0%
American Indian or Alaska Native	113	0.2%	267	0.5%	281	0.5%	332	0.5%	136.3%	18.2%
Asian/Hawaiian/PI	111	0.2%	220	0.4%	230	0.4%	270	0.4%	98.2%	17.4%
Some Other Race	5,334	10.9%	8,856	15.1%	9,304	15.2%	10,980	15.2%	66.0%	18.0%
Two or More Races	522	1.1%	940	1.6%	951	1.6%	1,121	1.6%	80.1%	17.9%
Hispanic Ethnicity	7,426	15.1%	12,059	20.6%	12,660	20.7%	15,057	20.8%	62.4%	18.9%
Not Hispanic or Latino	41,637	84.9%	46,446	79.4%	48,600	79.3%	57,300	79.2%	11.6%	17.9%

### Households by Income

## Households by Income Group 2011A

In 2011A the predominant household income category in this study area is **\$0 - \$15K**, and the income group that is least represented in this geography is **\$150K +**.



### HH Income Categories\*

HH Income Categories*	1990 Census		2000 Census		2011A Estimate		2016 Projection		Percent Change	
		%		%		%		%	1990 to 2000	2011 to 2016
\$0 - \$15,000	5,719	38.3%	4,556	24.9%	5,262	21.8%	6,369	20.7%	-20.3%	21.0%
\$15,000 - \$24,999	3,252	21.8%	3,152	17.3%	3,772	15.6%	4,576	14.9%	-3.1%	21.3%
\$25,000 - \$34,999	2,491	16.7%	2,926	16.0%	3,010	12.5%	3,466	11.3%	17.5%	15.2%
\$35,000 - \$49,999	2,181	14.6%	3,064	16.8%	4,064	16.8%	5,133	16.7%	40.5%	26.3%
\$50,000 - \$74,999	967	6.5%	2,849	15.6%	3,793	15.7%	4,723	15.4%	194.6%	24.5%
\$75,000 - \$99,999	177	1.2%	912	5.0%	2,095	8.7%	3,165	10.3%	415.3%	51.1%
\$100,000 - \$149,999	66	0.4%	491	2.7%	1,704	7.1%	2,723	8.9%	643.9%	59.8%
\$150,000 +	56	0.4%	317	1.7%	442	1.8%	575	1.9%	466.1%	30.1%
Average Hhld Income	\$25,208		\$38,431		\$45,773		\$48,686		52.5%	6.4%
Median Hhld Income	\$19,666		\$29,905		\$35,077		\$36,998		52.1%	5.5%
Per Capita Income	\$9,472		\$14,309		\$18,208		\$20,854		51.1%	14.5%

\*This Census 2010 data has not yet been released

Current year data is for the year **2011**, 5 year projected data is for the year **2016**. More About Our Data.  
Demographic data ' 2011 by Experian/Applied Geographic Solutions.

Business List data ' 2011 by D&B<sup>fi</sup>. All rights reserved. All D&B information is powered by DUNSRight™, D&B's Quality Process.

' 2011. DDR is brought to you by Alteryx, Inc.

Alteryx, DemographicsNow.com and the Alteryx and DemographicsNow.com logos are trademarks of Alteryx, Inc. All rights reserved.

Privacy Statement | License Agreement