



Date: 05/02/12

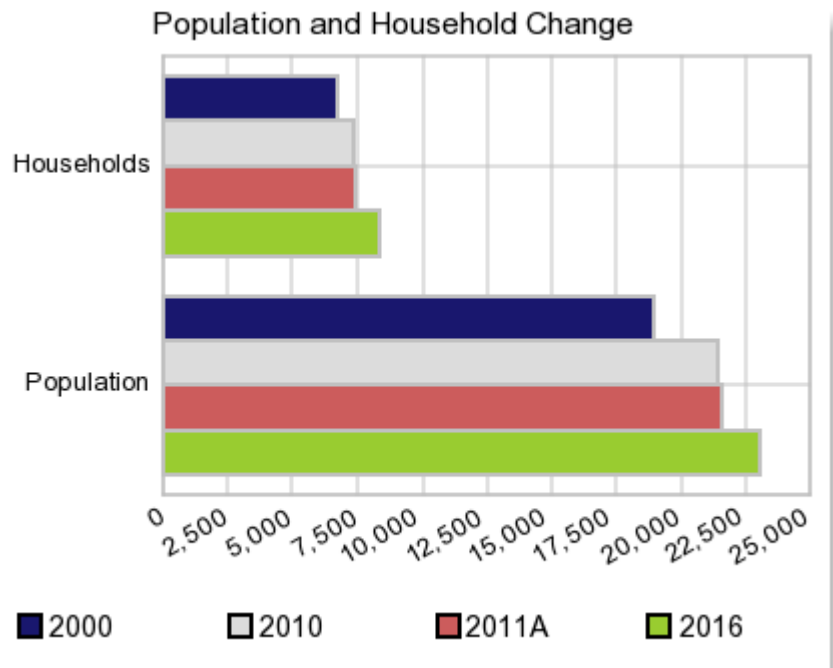
Current Geography Selection: (1 Selected) Counties: Greene County

Executive Summary Report with Charts

Population Demographics:

The number of households in the study area in 2000 was **6,696** and changed to **7,313** in 2010, representing a change of **9.2%**. The household count in 2011A was **7,465** and the household projection for 2016 is **8,321**, a change of **11.5%**.

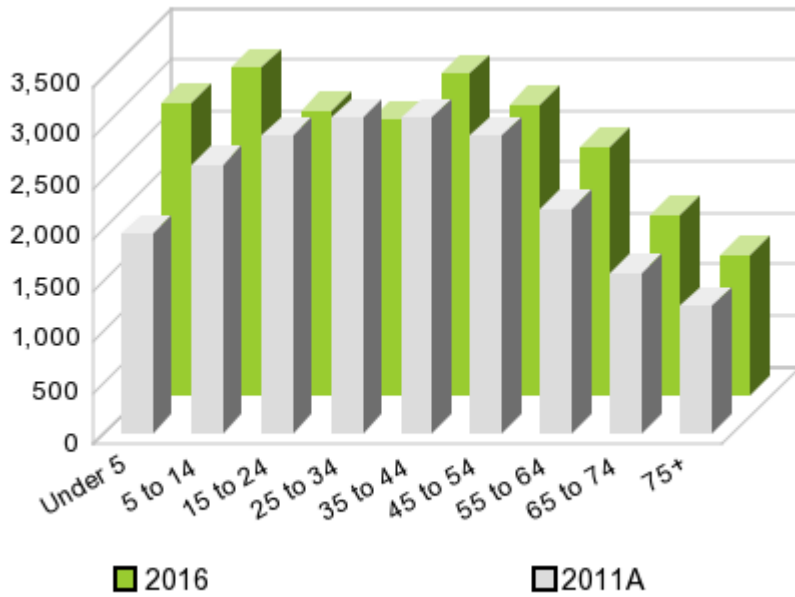
The population in the study area in 2000 was **18,974** and in 2010 it was **21,362**, roughly a **12.6%** change. The population in 2011A was **21,578** and the projection for 2016 is **23,045** representing a change of **6.8%**.



	2000 Census	2010 Census	2011A Estimate	2016 Projection	Percent Change	
					2000 to 2010	2011 to 2016
Total Population	18,974	21,362	21,578	23,045	12.6%	6.8%
Total Households	6,696	7,313	7,465	8,321	35.6%	11.5%

Population by Age

Age



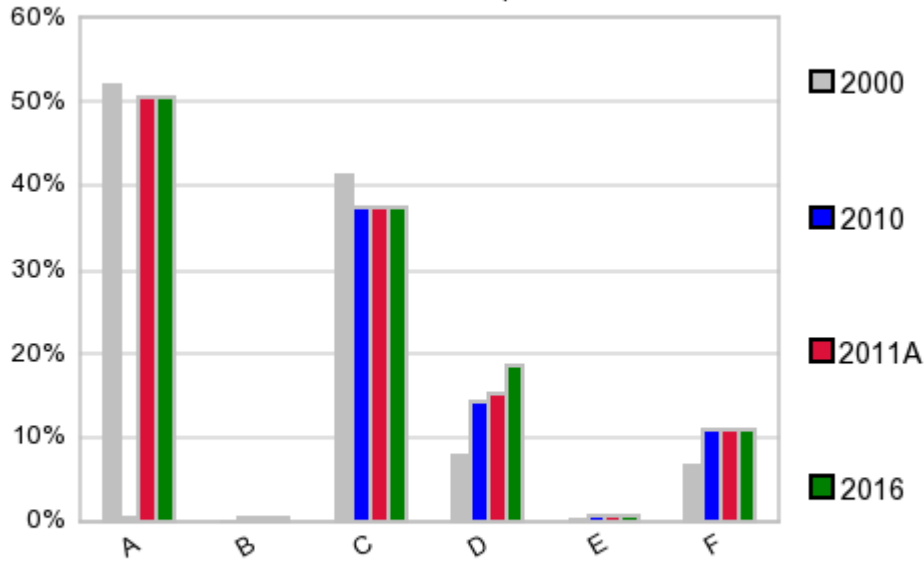
In 1990, the median age of the total population in the study area was **34**, and in 2000, it was **36**. The median age in 2011A is **36** and it is predicted to change in five years to **35** years. In 2011A, females represented **46.9%** of the population with a median age of **39** and males represented **53.1%** of the population with a median age of **34** years. In 2011A, the most prominent age group in this geography is **Age 35 to 44** years. The age group least represented in this geography is **75 +** years.

Age Groups*

Age Group	1990 Census		2000 Census		2011A Estimate		2016 Projection		Percent Change	
	Count	%	Count	%	Count	%	Count	%	1990 to 2000	2011 to 2016
0 to 4	999	6.5%	1,321	7.0%	1,950	9.0%	2,862	12.4%	32.2%	46.8%
5 to 14	2,277	14.8%	2,642	13.9%	2,636	12.2%	3,194	13.9%	16.0%	21.2%
15 to 19	1,127	7.3%	1,327	7.0%	1,565	7.3%	1,252	5.4%	17.7%	-20.0%
20 to 24	994	6.5%	1,282	6.8%	1,346	6.2%	1,523	6.6%	29.0%	13.2%
25 to 34	2,707	17.6%	2,773	14.6%	3,082	14.3%	2,686	11.7%	2.4%	-12.8%
35 to 44	2,343	15.2%	3,095	16.3%	3,086	14.3%	3,144	13.6%	32.1%	1.9%
45 to 54	1,590	10.3%	2,539	13.4%	2,907	13.5%	2,835	12.3%	59.7%	-2.5%
55 to 64	1,460	9.5%	1,701	9.0%	2,186	10.1%	2,415	10.5%	16.5%	10.5%
65 to 74	1,152	7.5%	1,260	6.6%	1,569	7.3%	1,761	7.6%	9.4%	12.2%
75 +	735	4.8%	1,034	5.5%	1,242	5.8%	1,371	6.0%	40.7%	10.4%

Population by Race/Ethnicity

Race and Ethnicity Percent Composition



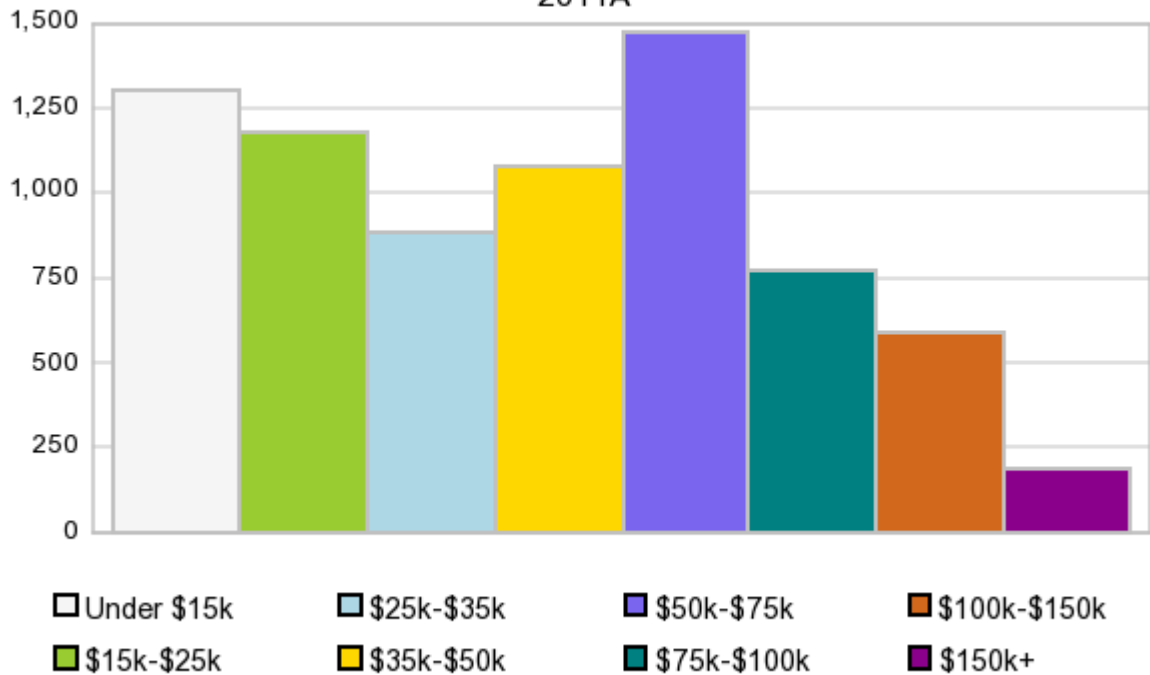
In 2011A, the predominant race/ethnicity category in this study area is **White**. The race & ethnicity category least represented in this geography is **Asian or Pacific Islander**.

A: White
 B: Asian Pac Islidr
 C: Black
 D: Hispanic
 E: Amer Indian or Alaska Native
 F: Other or Multi Race

Race & Ethnicity	2000		2010		2011A		2016		Percent Change	
	Census	%	Census	%	Estimate	%	Projection	%	2000 to 2010	2011 to 2016
White	9,835	51.8%	10,850	50.8%	10,895	50.5%	11,647	50.5%	10.3%	6.9%
Black	7,820	41.2%	7,964	37.3%	8,100	37.5%	8,642	37.5%	1.8%	6.7%
American Indian or Alaska Native	57	0.3%	154	0.7%	157	0.7%	170	0.7%	170.2%	8.3%
Asian/Hawaiian/PI	19	0.1%	78	0.4%	80	0.4%	85	0.4%	310.5%	6.3%
Some Other Race	1,091	5.8%	2,002	9.4%	2,028	9.4%	2,166	9.4%	83.5%	6.8%
Two or More Races	152	0.8%	314	1.5%	320	1.5%	339	1.5%	106.6%	5.9%
Hispanic Ethnicity	1,511	8.0%	3,054	14.3%	3,290	15.3%	4,285	18.6%	102.1%	30.2%
Not Hispanic or Latino	17,463	92.0%	18,308	85.7%	18,288	84.8%	18,760	81.4%	4.8%	2.6%

Households by Income

Households by Income Group 2011A



In 2011A the predominant household income category in this study area is **\$50K - \$75K**, and the income group that is least represented in this geography is **\$150K +**.

HH Income Categories*

HH Income Categories*	1990 Census		2000 Census		2011A Estimate		2016 Projection		Percent Change	
	Count	%	Count	%	Count	%	Count	%	1990 to 2000	2011 to 2016
\$0 - \$15,000	1,768	32.8%	1,655	24.7%	1,299	17.4%	1,232	14.8%	-6.4%	-5.2%
\$15,000 - \$24,999	1,149	21.3%	1,024	15.3%	1,180	15.8%	1,299	15.6%	-10.9%	10.1%
\$25,000 - \$34,999	918	17.0%	1,025	15.3%	884	11.8%	915	11.0%	11.7%	3.5%
\$35,000 - \$49,999	926	17.2%	1,209	18.1%	1,078	14.4%	1,067	12.8%	30.6%	-1.0%
\$50,000 - \$74,999	527	9.8%	1,154	17.2%	1,470	19.7%	1,714	20.6%	119.0%	16.6%
\$75,000 - \$99,999	67	1.2%	400	6.0%	774	10.4%	1,024	12.3%	497.0%	32.3%
\$100,000 - \$149,999	25	0.5%	153	2.3%	590	7.9%	825	9.9%	512.0%	39.8%
\$150,000 +	18	0.3%	76	1.1%	188	2.5%	239	2.9%	322.2%	27.1%
Average Hhld Income	\$26,635		\$38,219		\$51,274		\$57,479		43.5%	12.1%
Median Hhld Income	\$22,889		\$31,892		\$39,981		\$43,820		39.3%	9.6%
Per Capita Income	\$9,490		\$13,488		\$19,557		\$22,770		42.1%	16.4%

*This Census 2010 data has not yet been released

Current year data is for the year **2011**, 5 year projected data is for the year **2016**. More About Our Data.
Demographic data ' 2011 by Experian/Applied Geographic Solutions.

Business List data ' 2011 by D&B^{fi}. All rights reserved. All D&B information is powered by DUNSRight™, D&B's Quality Process.

' 2011. DDR is brought to you by Alteryx, Inc.

Alteryx, DemographicsNow.com and the Alteryx and DemographicsNow.com logos are trademarks of Alteryx, Inc. All rights reserved.

Privacy Statement | License Agreement