



Date: 05/02/12

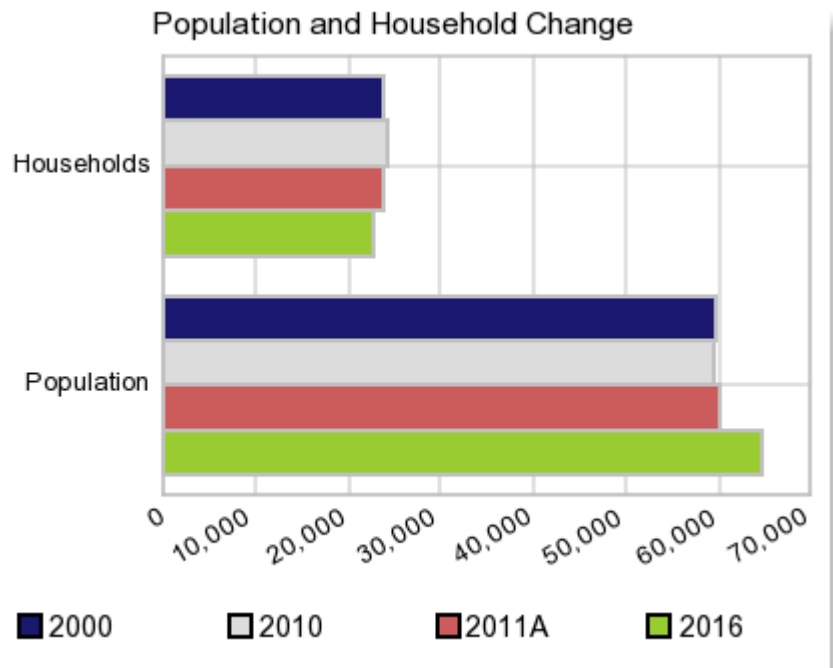
Current Geography Selection: (1 Selected) Counties: Lenoir County

Executive Summary Report with Charts

Population Demographics:

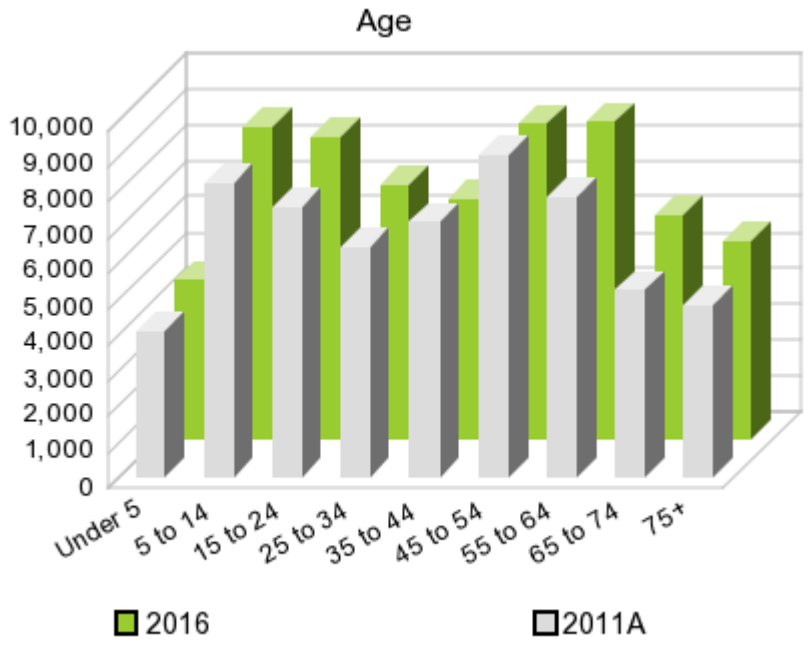
The number of households in the study area in 2000 was **23,862** and changed to **24,327** in 2010, representing a change of **1.9%**. The household count in 2011A was **23,903** and the household projection for 2016 is **22,678**, a change of **-5.1%**.

The population in the study area in 2000 was **59,648** and in 2010 it was **59,495**, roughly a **-0.3%** change. The population in 2011A was **60,332** and the projection for 2016 is **64,769** representing a change of **7.4%**.



	2000 Census	2010 Census	2011A Estimate	2016 Projection	Percent Change	
					2000 to 2010	2011 to 2016
Total Population	59,648	59,495	60,332	64,769	-0.3%	7.4%
Total Households	23,862	24,327	23,903	22,678	10.9%	-5.1%

Population by Age



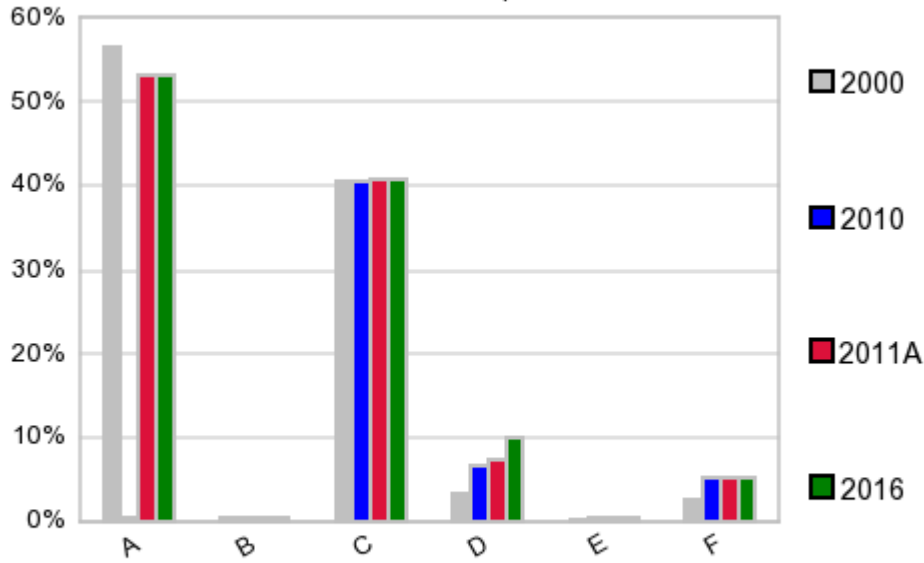
In 1990, the median age of the total population in the study area was **35**, and in 2000, it was **38**. The median age in 2011A is **41** and it is predicted to change in five years to **41** years. In 2011A, females represented **52.7%** of the population with a median age of **43** and males represented **47.3%** of the population with a median age of **38** years. In 2011A, the most prominent age group in this geography is **Age 45 to 54** years. The age group least represented in this geography is **18 to 24** years.

Age Groups*

	1990 Census		2000 Census		2011A Estimate		2016 Projection		Percent Change	
		%		%		%		%	1990 to 2000	2011 to 2016
0 to 4	3,681	6.4%	3,913	6.6%	4,113	6.8%	4,438	6.9%	6.3%	7.9%
5 to 14	8,295	14.5%	8,520	14.3%	8,192	13.6%	8,689	13.4%	2.7%	6.1%
15 to 19	4,602	8.0%	4,059	6.8%	3,987	6.6%	4,229	6.5%	-11.8%	6.1%
20 to 24	3,581	6.3%	3,283	5.5%	3,566	5.9%	4,189	6.5%	-8.3%	17.5%
25 to 34	8,759	15.3%	7,265	12.2%	6,426	10.7%	7,073	10.9%	-17.1%	10.1%
35 to 44	8,608	15.0%	9,214	15.4%	7,118	11.8%	6,692	10.3%	7.0%	-6.0%
45 to 54	6,278	11.0%	8,632	14.5%	9,019	14.9%	8,795	13.6%	37.5%	-2.5%
55 to 64	5,611	9.8%	6,028	10.1%	7,821	13.0%	8,843	13.7%	7.4%	13.1%
65 to 74	4,826	8.4%	4,887	8.2%	5,241	8.7%	6,281	9.7%	1.3%	19.8%
75 +	3,030	5.3%	3,847	6.5%	4,794	7.9%	5,521	8.5%	27.0%	15.2%

Population by Race/Ethnicity

Race and Ethnicity Percent Composition



In 2011A, the predominant race/ethnicity category in this study area is **White**. The race & ethnicity category least represented in this geography is **American Indian, Alaska Native**.

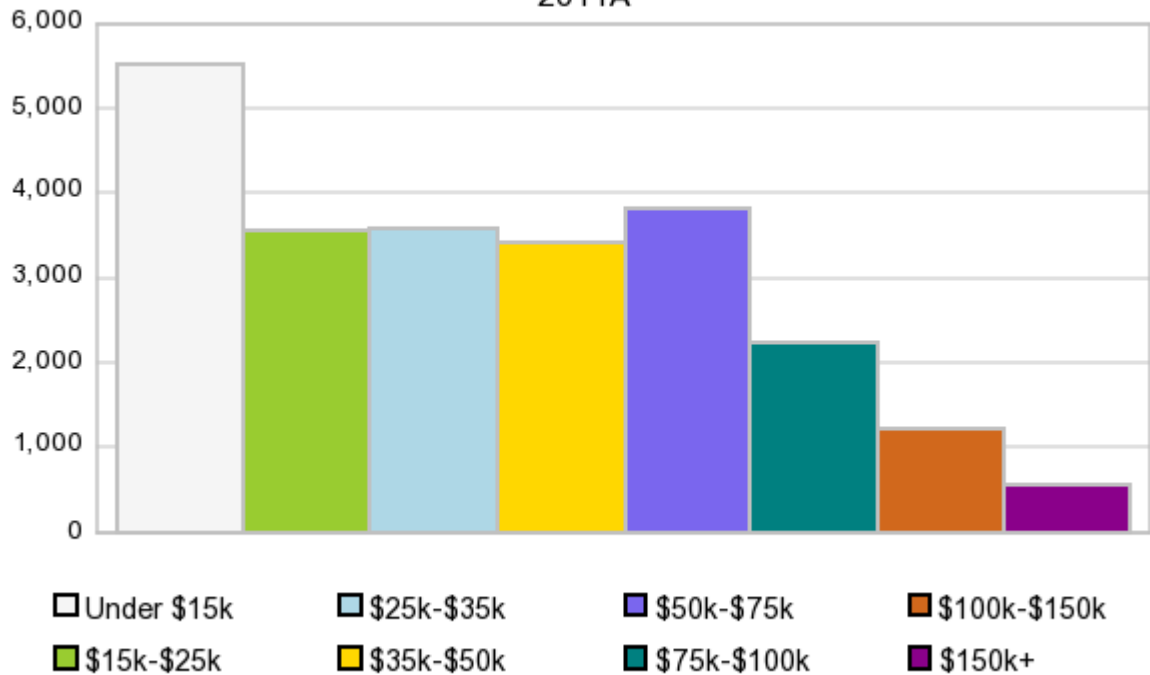
A: White
 B: Asian Pac Islr
 C: Black
 D: Hispanic
 E: Amer Indian or Alaska Native
 F: Other or Multi Race

Race & Ethnicity	2000		2010		2011A		2016		Percent Change	
	Census	%	Census	%	Estimate	%	Projection	%	2000 to 2010	2011 to 2016
White	33,685	56.5%	31,758	53.4%	32,102	53.2%	34,498	53.3%	-5.7%	7.5%
Black	24,115	40.4%	24,121	40.5%	24,559	40.7%	26,334	40.7%	0.0%	7.2%
American Indian or Alaska Native	106	0.2%	222	0.4%	221	0.4%	240	0.4%	109.4%	8.6%
Asian/Hawaiian/PI	232	0.4%	310	0.5%	316	0.5%	337	0.5%	33.6%	6.6%
Some Other Race	1,119	1.9%	2,299	3.9%	2,221	3.7%	2,385	3.7%	105.5%	7.4%
Two or More Races	391	0.7%	785	1.3%	911	1.5%	977	1.5%	100.8%	7.2%
Hispanic Ethnicity	1,891	3.2%	3,917	6.6%	4,414	7.3%	6,404	9.9%	107.1%	45.1%
Not Hispanic or Latino	57,757	96.8%	55,578	93.4%	55,922	92.7%	58,361	90.1%	-3.8%	4.4%

Households by Income

Households by Income Group 2011A

In 2011A the predominant household income category in this study area is **\$0 - \$15K**, and the income group that is least represented in this geography is **\$150K +**.



HH Income Categories*

HH Income Categories*	1990 Census		2000 Census		2011A Estimate		2016 Projection		Percent Change	
	Count	%	Count	%	Count	%	Count	%	1990 to 2000	2011 to 2016
\$0 - \$15,000	8,142	37.1%	5,668	23.8%	5,509	23.0%	5,230	23.1%	-30.4%	-5.1%
\$15,000 - \$24,999	4,276	19.5%	4,040	16.9%	3,549	14.8%	3,217	14.2%	-5.5%	-9.4%
\$25,000 - \$34,999	3,445	15.7%	3,507	14.7%	3,579	15.0%	3,414	15.1%	1.8%	-4.6%
\$35,000 - \$49,999	3,452	15.7%	4,152	17.4%	3,417	14.3%	2,958	13.0%	20.3%	-13.4%
\$50,000 - \$74,999	1,903	8.7%	3,856	16.2%	3,832	16.0%	3,611	15.9%	102.6%	-5.8%
\$75,000 - \$99,999	425	1.9%	1,447	6.1%	2,252	9.4%	2,411	10.6%	240.5%	7.1%
\$100,000 - \$149,999	163	0.7%	720	3.0%	1,217	5.1%	1,317	5.8%	341.7%	8.2%
\$150,000 +	148	0.7%	472	2.0%	550	2.3%	519	2.3%	218.9%	-5.6%
Average Hhld Income	\$27,418		\$41,124		\$44,256		\$45,114		50.0%	1.9%
Median Hhld Income	\$21,246		\$31,277		\$33,296		\$33,676		47.2%	1.1%
Per Capita Income	\$10,580		\$16,452		\$17,914		\$16,215		55.5%	-9.5%

*This Census 2010 data has not yet been released

Current year data is for the year **2011**, 5 year projected data is for the year **2016**. More About Our Data.
Demographic data ' 2011 by Experian/Applied Geographic Solutions.

Business List data ' 2011 by D&B^{fi}. All rights reserved. All D&B information is powered by DUNSRight™, D&B's Quality Process.

' 2011. DDR is brought to you by Alteryx, Inc.

Alteryx, DemographicsNow.com and the Alteryx and DemographicsNow.com logos are trademarks of Alteryx, Inc. All rights reserved.

Privacy Statement | License Agreement