



Date: 05/02/12

Current Geography Selection: (1 Selected) Counties: Wake County

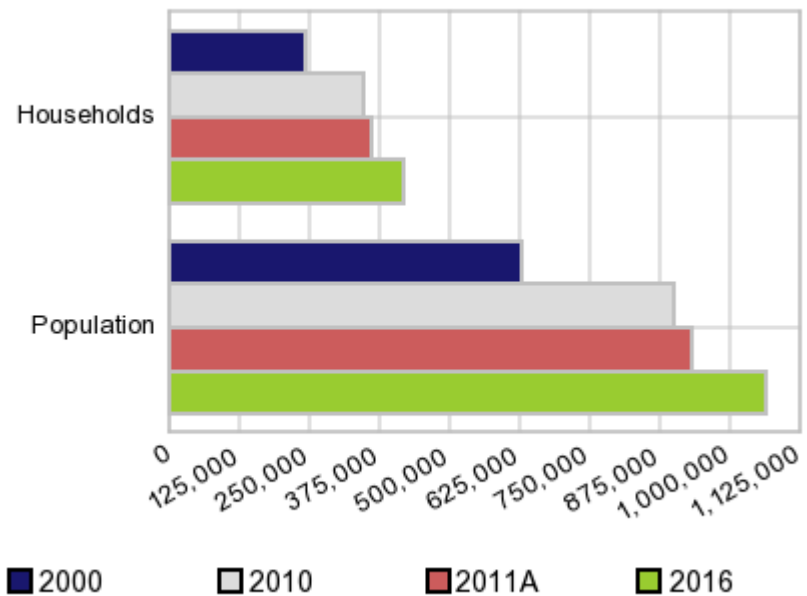
Executive Summary Report with Charts

Population Demographics:

The number of households in the study area in 2000 was **242,040** and changed to **345,645** in 2010, representing a change of **42.8%**. The household count in 2011A was **359,679** and the household projection for 2016 is **416,073**, a change of **15.7%**.

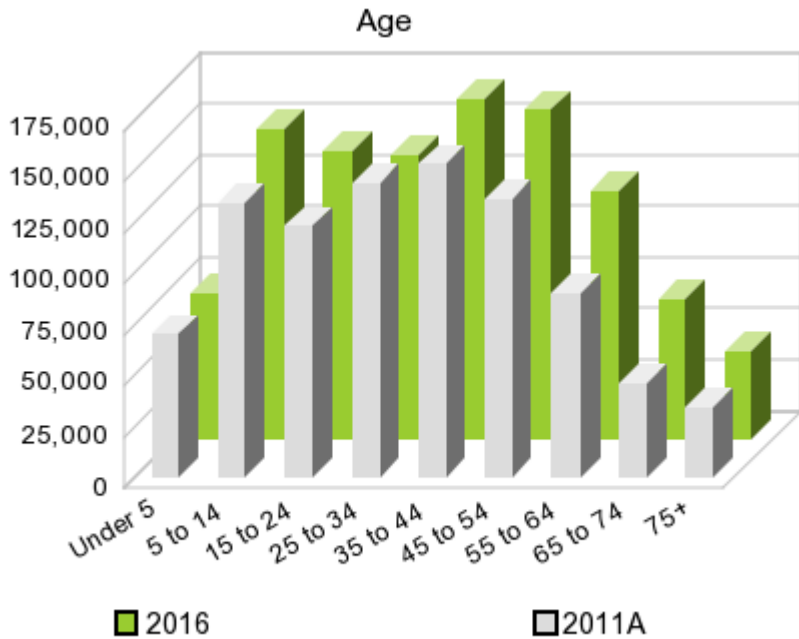
The population in the study area in 2000 was **627,846** and in 2010 it was **900,993**, roughly a **43.5%** change. The population in 2011A was **930,757** and the projection for 2016 is **1,061,873** representing a change of **14.1%**.

Population and Household Change



	2000 Census	2010 Census	2011A Estimate	2016 Projection	Percent Change	
					2000 to 2010	2011 to 2016
Total Population	627,846	900,993	930,757	1,061,873	43.5%	14.1%
Total Households	242,040	345,645	359,679	416,073	108.6%	15.7%

Population by Age



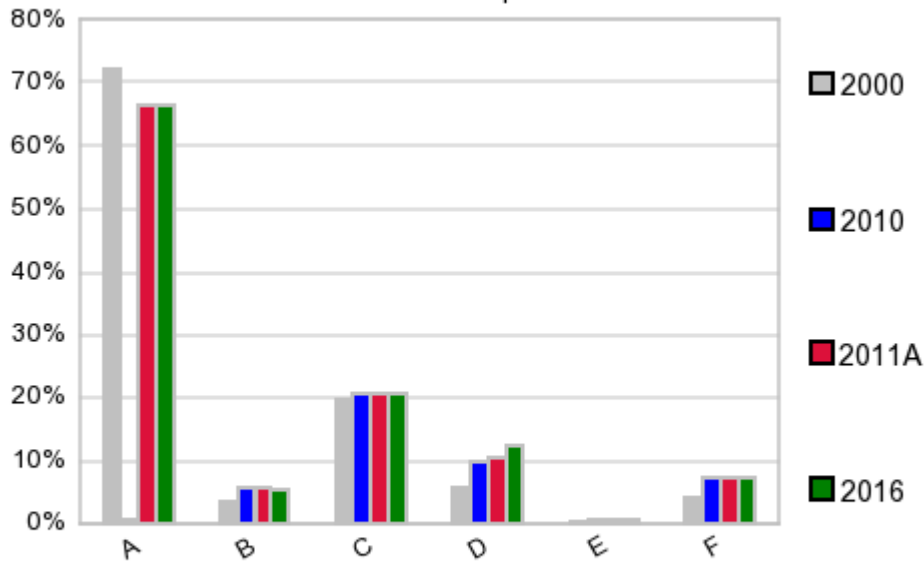
In 1990, the median age of the total population in the study area was **31**, and in 2000, it was **33**. The median age in 2011A is **35** and it is predicted to change in five years to **37** years. In 2011A, females represented **50.5%** of the population with a median age of **35** and males represented **49.5%** of the population with a median age of **34** years. In 2011A, the most prominent age group in this geography is **Age 35 to 44** years. The age group least represented in this geography is **75 +** years.

Age Groups*

	1990		2000		2011A		2016		Percent Change	
	Census	%	Census	%	Estimate	%	Projection	%	1990 to 2000	2011 to 2016
0 to 4	30,174	7.1%	45,142	7.2%	69,752	7.5%	71,066	6.7%	49.6%	1.9%
5 to 14	52,745	12.5%	89,410	14.2%	134,153	14.4%	151,218	14.2%	69.5%	12.7%
15 to 19	29,170	6.9%	41,020	6.5%	63,380	6.8%	71,881	6.8%	40.6%	13.4%
20 to 24	40,886	9.7%	48,939	7.8%	59,241	6.4%	69,210	6.5%	19.7%	16.8%
25 to 34	90,869	21.5%	113,409	18.1%	143,795	15.5%	138,829	13.1%	24.8%	-3.5%
35 to 44	73,827	17.4%	115,663	18.4%	153,301	16.5%	166,332	15.7%	56.7%	8.5%
45 to 54	43,821	10.4%	84,206	13.4%	136,101	14.6%	161,163	15.2%	92.2%	18.4%
55 to 64	28,651	6.8%	43,685	7.0%	90,146	9.7%	121,152	11.4%	52.5%	34.4%
65 to 74	20,099	4.7%	25,978	4.1%	46,457	5.0%	68,522	6.5%	29.3%	47.5%
75 +	13,088	3.1%	20,394	3.2%	34,493	3.7%	42,351	4.0%	55.8%	22.8%

Population by Race/Ethnicity

Race and Ethnicity Percent Composition



In 2011A, the predominant race/ethnicity category in this study area is **White**. The race & ethnicity category least represented in this geography is **American Indian, Alaska Native**.

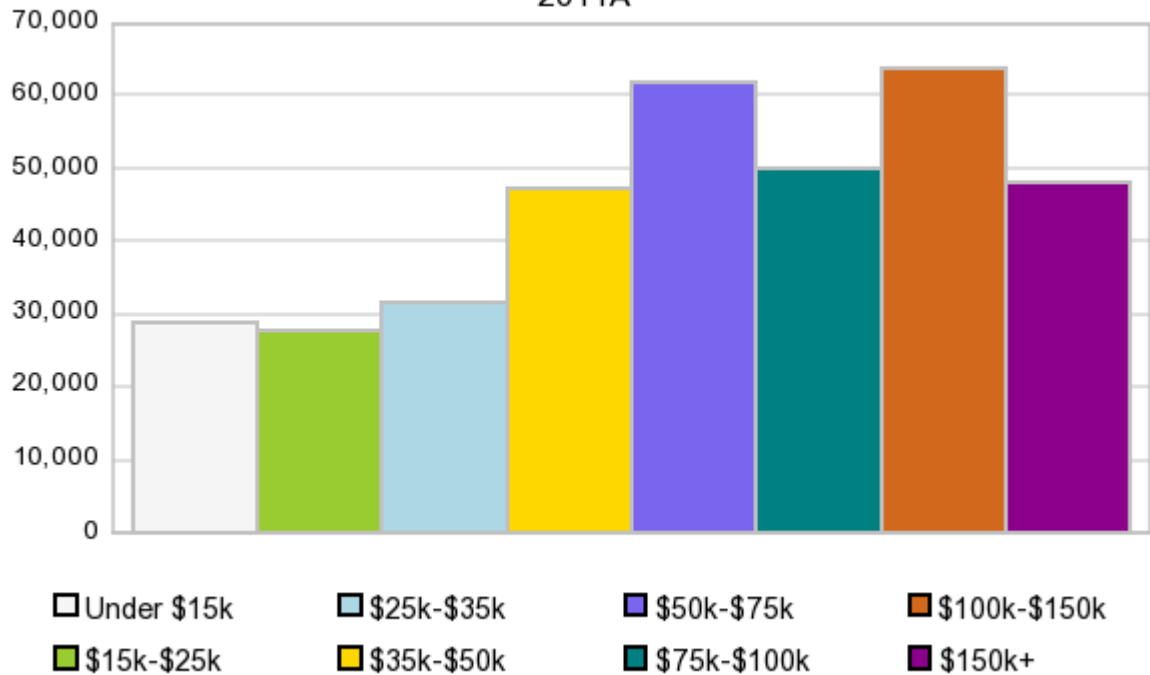
A: White
 B: Asian Pac Islr
 C: Black
 D: Hispanic
 E: Amer Indian or Alaska Native
 F: Other or Multi Race

Race & Ethnicity	2000		2010		2011A		2016		Percent Change	
	Census	%	Census	%	Estimate	%	Projection	%	2000 to 2010	2011 to 2016
White	454,544	72.4%	597,546	66.3%	617,036	66.3%	704,815	66.4%	31.5%	14.2%
Black	123,820	19.7%	186,510	20.7%	193,011	20.7%	219,993	20.7%	50.6%	14.0%
American Indian or Alaska Native	2,152	0.3%	4,503	0.5%	4,668	0.5%	5,332	0.5%	109.2%	14.2%
Asian/Hawaiian/PI	21,461	3.4%	48,940	5.4%	50,384	5.4%	56,917	5.4%	128.0%	13.0%
Some Other Race	15,548	2.5%	40,928	4.5%	38,422	4.1%	43,767	4.1%	163.2%	13.9%
Two or More Races	10,321	1.6%	22,566	2.5%	27,248	2.9%	31,049	2.9%	118.6%	14.0%
Hispanic Ethnicity	33,985	5.4%	87,922	9.8%	96,640	10.4%	131,973	12.4%	158.7%	36.6%
Not Hispanic or Latino	593,861	94.6%	813,071	90.2%	834,104	89.6%	929,904	87.6%	36.9%	11.5%

Households by Income

Households by Income Group 2011A

In 2011A the predominant household income category in this study area is **\$100K - \$150K**, and the income group that is least represented in this geography is **\$15K - \$25K**.



HH Income Categories*

HH Income Categories*	1990 Census		2000 Census		2011A Estimate		2016 Projection		Percent Change	
	Count	%	Count	%	Count	%	Count	%	1990 to 2000	2011 to 2016
\$0 - \$15,000	27,477	16.6%	21,975	9.1%	28,729	8.0%	31,938	7.7%	-20.0%	11.2%
\$15,000 - \$24,999	26,043	15.7%	22,200	9.2%	27,883	7.8%	30,417	7.3%	-14.8%	9.1%
\$25,000 - \$34,999	25,877	15.6%	27,001	11.2%	31,608	8.8%	33,202	8.0%	4.3%	5.0%
\$35,000 - \$49,999	33,717	20.3%	37,334	15.4%	47,334	13.2%	51,173	12.3%	10.7%	8.1%
\$50,000 - \$74,999	32,643	19.7%	52,061	21.5%	62,008	17.2%	65,130	15.7%	59.5%	5.0%
\$75,000 - \$99,999	11,363	6.9%	33,958	14.0%	50,039	13.9%	57,254	13.8%	198.8%	14.4%
\$100,000 - \$149,999	5,993	3.6%	31,295	12.9%	63,892	17.8%	81,320	19.5%	422.2%	27.3%
\$150,000 +	2,633	1.6%	16,216	6.7%	48,174	13.4%	65,608	15.8%	515.9%	36.2%
Average Hhld Income	\$43,445		\$69,134		\$86,383		\$96,512		59.1%	11.7%
Median Hhld Income	\$36,259		\$55,414		\$67,012		\$73,554		52.8%	9.8%
Per Capita Income	\$17,159		\$26,652		\$34,093		\$38,554		55.3%	13.1%

*This Census 2010 data has not yet been released

Current year data is for the year **2011**, 5 year projected data is for the year **2016**. More About Our Data.
Demographic data ' 2011 by Experian/Applied Geographic Solutions.

Business List data ' 2011 by D&B^{fi}. All rights reserved. All D&B information is powered by DUNSRightTM, D&B's Quality Process.

' 2011. DDR is brought to you by Alteryx, Inc.

Alteryx, DemographicsNow.com and the Alteryx and DemographicsNow.com logos are trademarks of Alteryx, Inc. All rights reserved.

Privacy Statement | License Agreement