



Date: 05/02/12

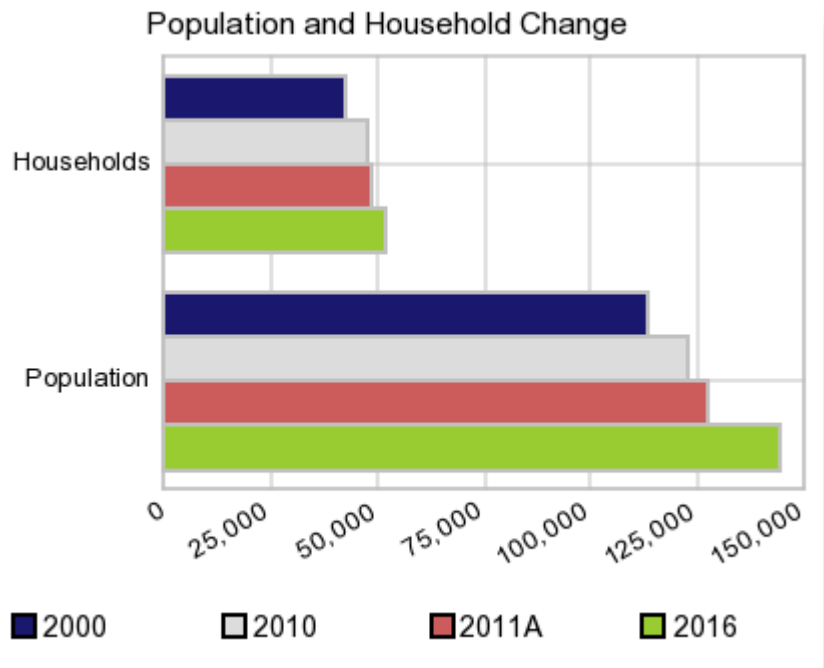
Current Geography Selection: (1 Selected) Counties: Wayne County

## Executive Summary Report with Charts

### Population Demographics:

The number of households in the study area in 2000 was **42,612** and changed to **47,831** in 2010, representing a change of **12.2%**. The household count in 2011A was **48,717** and the household projection for 2016 is **52,108**, a change of **7.0%**.

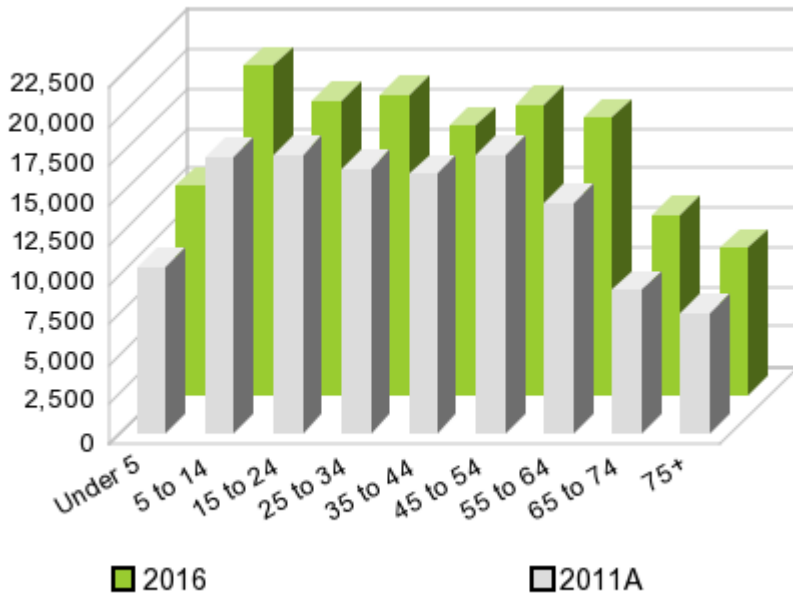
The population in the study area in 2000 was **113,329** and in 2010 it was **122,623**, roughly a **8.2%** change. The population in 2011A was **127,015** and the projection for 2016 is **144,163** representing a change of **13.5%**.



	2000 Census	2010 Census	2011A Estimate	2016 Projection	Percent Change	
					2000 to 2010	2011 to 2016
Total Population	113,329	122,623	127,015	144,163	8.2%	13.5%
Total Households	42,612	47,831	48,717	52,108	29.7%	7.0%

### Population by Age

### Age



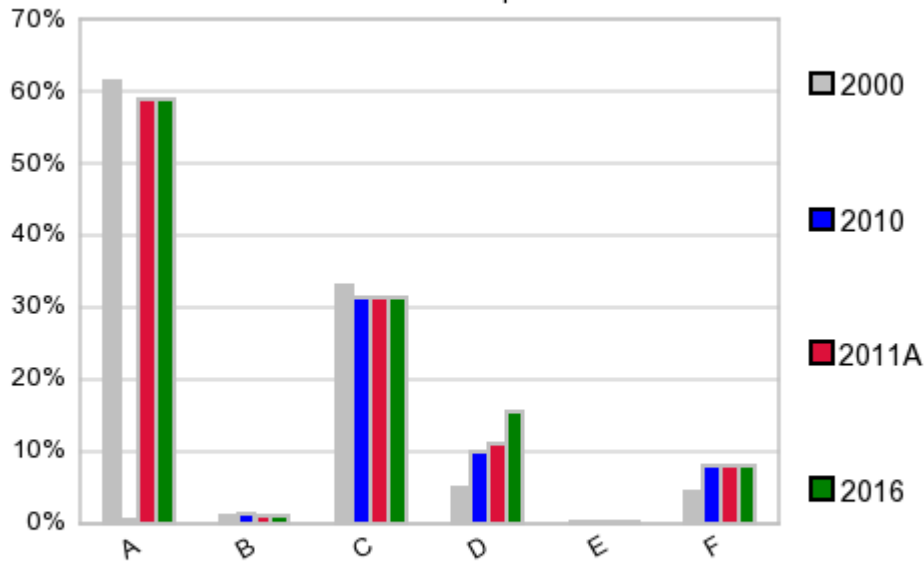
In 1990, the median age of the total population in the study area was **32**, and in 2000, it was **35**. The median age in 2011A is **36** and it is predicted to change in five years to **36** years. In 2011A, females represented **51.3%** of the population with a median age of **38** and males represented **48.7%** of the population with a median age of **34** years. In 2011A, the most prominent age group in this geography is **Age 45 to 54** years. The age group least represented in this geography is **75 +** years.

### Age Groups\*

	1990 Census		2000 Census		2011A Estimate		2016 Projection		Percent Change	
		%		%		%		%	1990 to 2000	2011 to 2016
0 to 4	7,932	7.6%	7,937	7.0%	10,512	8.3%	13,100	9.1%	0.1%	24.6%
5 to 14	14,932	14.3%	16,806	14.8%	17,396	13.7%	20,650	14.3%	12.6%	18.7%
15 to 19	7,554	7.2%	7,988	7.1%	8,679	6.8%	9,290	6.4%	5.7%	7.0%
20 to 24	8,217	7.9%	8,077	7.1%	8,862	7.0%	9,248	6.4%	-1.7%	4.4%
25 to 34	19,756	18.9%	16,109	14.2%	16,635	13.1%	18,811	13.0%	-18.5%	13.1%
35 to 44	15,671	15.0%	18,466	16.3%	16,335	12.9%	16,900	11.7%	17.8%	3.5%
45 to 54	10,756	10.3%	14,753	13.0%	17,529	13.8%	18,187	12.6%	37.2%	3.8%
55 to 64	9,118	8.7%	10,084	8.9%	14,488	11.4%	17,389	12.1%	10.6%	20.0%
65 to 74	6,737	6.4%	7,670	6.8%	9,048	7.1%	11,317	7.9%	13.8%	25.1%
75 +	3,993	3.8%	5,439	4.8%	7,532	5.9%	9,285	6.4%	36.2%	23.3%

### Population by Race/Ethnicity

### Race and Ethnicity Percent Composition



In 2011A, the predominant race/ethnicity category in this study area is **White**. The race & ethnicity category least represented in this geography is **American Indian, Alaska Native**.

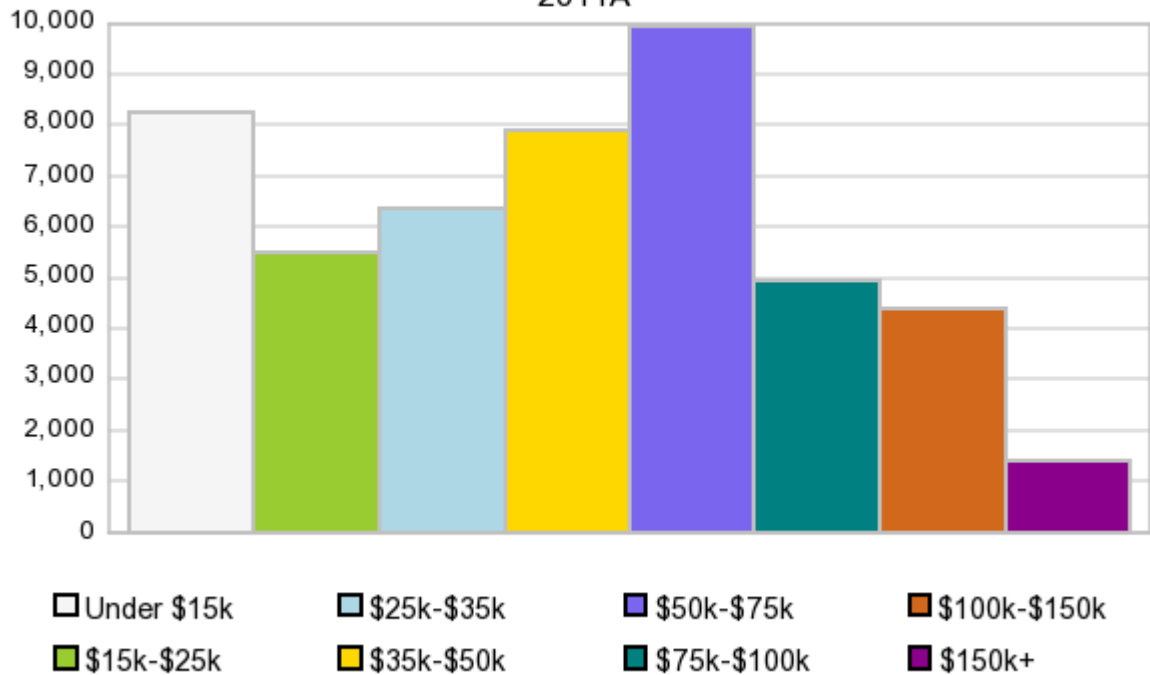
A: White  
 B: Asian Pac Islr  
 C: Black  
 D: Hispanic  
 E: Amer Indian or Alaska Native  
 F: Other or Multi Race

Race & Ethnicity	2000 Census		2010 Census		2011A Estimate		2016 Projection		Percent Change	
	Count	%	Count	%	Count	%	Count	%	2000 to 2010	2011 to 2016
White	69,452	61.3%	72,135	58.8%	74,776	58.9%	84,945	58.9%	3.9%	13.6%
Black	37,422	33.0%	38,499	31.4%	39,829	31.4%	45,162	31.3%	2.9%	13.4%
American Indian or Alaska Native	412	0.4%	481	0.4%	499	0.4%	568	0.4%	16.7%	13.8%
Asian/Hawaiian/PI	1,143	1.0%	1,495	1.2%	1,541	1.2%	1,737	1.2%	30.8%	12.7%
Some Other Race	3,483	3.1%	7,189	5.9%	7,133	5.6%	8,103	5.6%	106.4%	13.6%
Two or More Races	1,417	1.3%	2,824	2.3%	3,235	2.6%	3,648	2.5%	99.3%	12.8%
Hispanic Ethnicity	5,604	4.9%	12,162	9.9%	14,175	11.2%	22,153	15.4%	117.0%	56.3%
Not Hispanic or Latino	107,725	95.1%	110,461	90.1%	112,842	88.8%	122,009	84.6%	2.5%	8.1%

### Households by Income

## Households by Income Group 2011A

In 2011A the predominant household income category in this study area is **\$50K - \$75K**, and the income group that is least represented in this geography is **\$150K +**.



### HH Income Categories\*

HH Income Categories*	1990 Census		2000 Census		2011A Estimate		2016 Projection		Percent Change	
		%		%		%		%	1990 to 2000	2011 to 2016
\$0 - \$15,000	11,356	30.8%	8,198	19.2%	8,256	16.9%	8,450	16.2%	-27.8%	2.4%
\$15,000 - \$24,999	8,132	22.0%	6,752	15.8%	5,489	11.3%	5,075	9.7%	-17.0%	-7.5%
\$25,000 - \$34,999	6,558	17.8%	6,940	16.3%	6,383	13.1%	6,165	11.8%	5.8%	-3.4%
\$35,000 - \$49,999	6,171	16.7%	7,899	18.5%	7,915	16.2%	7,924	15.2%	28.0%	0.1%
\$50,000 - \$74,999	3,456	9.4%	7,383	17.3%	9,912	20.3%	11,150	21.4%	113.6%	12.5%
\$75,000 - \$99,999	761	2.1%	3,149	7.4%	4,965	10.2%	5,842	11.2%	313.8%	17.7%
\$100,000 - \$149,999	282	0.8%	1,501	3.5%	4,383	9.0%	5,794	11.1%	432.3%	32.2%
\$150,000 +	178	0.5%	790	1.9%	1,427	2.9%	1,720	3.3%	343.8%	20.5%
Average Hhld Income	\$28,073		\$43,942		\$53,516		\$58,354		56.5%	9.0%
Median Hhld Income	\$23,625		\$34,106		\$42,459		\$46,297		44.4%	9.0%
Per Capita Income	\$10,804		\$16,522		\$21,023		\$21,610		52.9%	2.8%

\*This Census 2010 data has not yet been released

Current year data is for the year **2011**, 5 year projected data is for the year **2016**. More About Our Data.  
Demographic data ' 2011 by Experian/Applied Geographic Solutions.

Business List data ' 2011 by D&B<sup>fi</sup>. All rights reserved. All D&B information is powered by DUNSRight™, D&B's Quality Process.

**' 2011. DDR is brought to you by Alteryx, Inc.**

Alteryx, DemographicsNow.com and the Alteryx and DemographicsNow.com logos are trademarks of Alteryx, Inc. All rights reserved.

Privacy Statement | License Agreement