



Date: 05/02/12

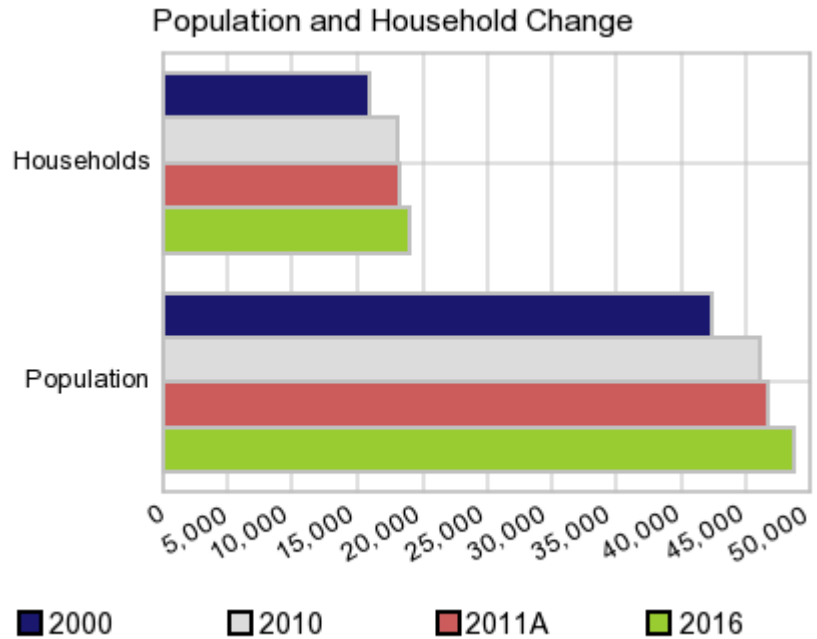
Current Geography Selection: (1 Selected) Counties: Buffalo County

## Executive Summary Report with Charts

### Population Demographics:

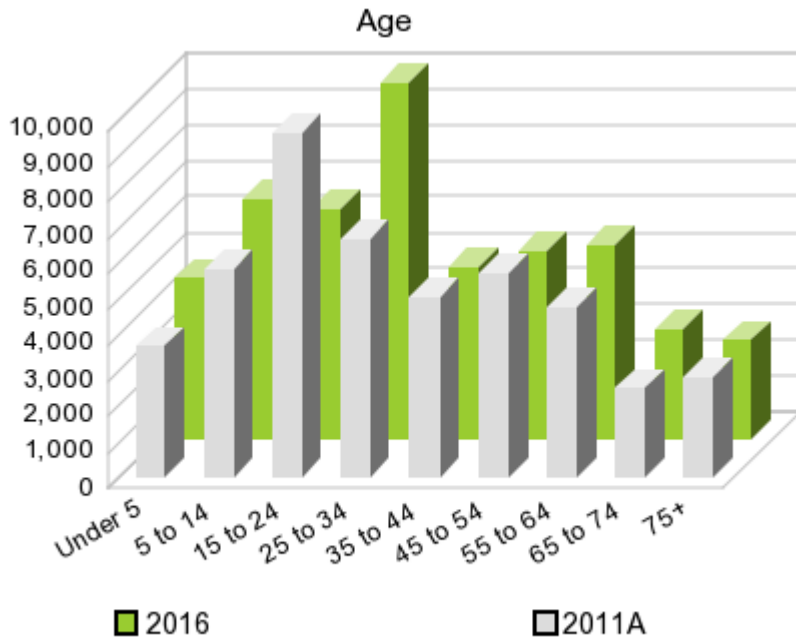
The number of households in the study area in 2000 was **15,930** and changed to **18,037** in 2010, representing a change of **13.2%**. The household count in 2011A was **18,229** and the household projection for 2016 is **18,990**, a change of **4.2%**.

The population in the study area in 2000 was **42,259** and in 2010 it was **46,102**, roughly a **9.1%** change. The population in 2011A was **46,658** and the projection for 2016 is **48,868** representing a change of **4.7%**.



	2000 Census	2010 Census	2011A Estimate	2016 Projection	Percent Change	
					2000 to 2010	2011 to 2016
Total Population	42,259	46,102	46,658	48,868	9.1%	4.7%
Total Households	15,930	18,037	18,229	18,990	31.3%	4.2%

### Population by Age



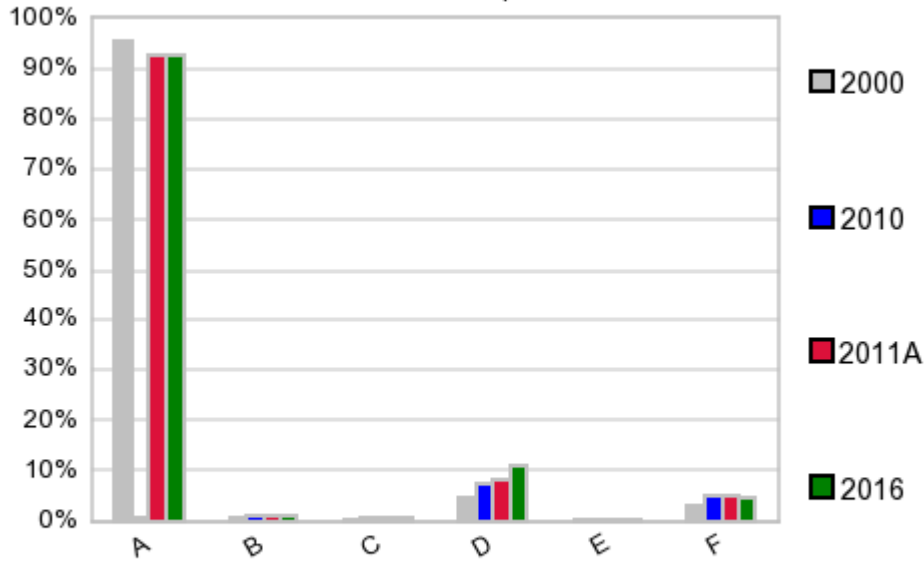
In 1990, the median age of the total population in the study area was **29**, and in 2000, it was **30**. The median age in 2011A is **30** and it is predicted to change in five years to **31** years. In 2011A, females represented **50.8%** of the population with a median age of **31** and males represented **49.2%** of the population with a median age of **29** years. In 2011A, the most prominent age group in this geography is **Age 25 to 34** years. The age group least represented in this geography is **65 to 74** years.

**Age Groups\***

	1990		2000		2011A		2016		Percent Change	
	Census	%	Census	%	Estimate	%	Projection	%	1990 to 2000	2011 to 2016
0 to 4	2,706	7.2%	2,805	6.6%	3,669	7.9%	4,472	9.2%	3.7%	21.9%
5 to 14	5,389	14.4%	5,786	13.7%	5,841	12.5%	6,701	13.7%	7.4%	14.7%
15 to 19	3,831	10.2%	4,227	10.0%	3,745	8.0%	2,735	5.6%	10.3%	-27.0%
20 to 24	4,830	12.9%	5,289	12.5%	5,856	12.6%	3,675	7.5%	9.5%	-37.2%
25 to 34	5,675	15.2%	5,520	13.1%	6,650	14.3%	9,934	20.3%	-2.7%	49.4%
35 to 44	4,957	13.2%	5,731	13.6%	5,053	10.8%	4,809	9.8%	15.6%	-4.8%
45 to 54	2,879	7.7%	5,113	12.1%	5,738	12.3%	5,270	10.8%	77.6%	-8.2%
55 to 64	2,636	7.0%	2,908	6.9%	4,759	10.2%	5,413	11.1%	10.3%	13.7%
65 to 74	2,283	6.1%	2,292	5.4%	2,507	5.4%	3,099	6.3%	0.4%	23.6%
75 +	2,261	6.0%	2,588	6.1%	2,825	6.1%	2,747	5.6%	14.5%	-2.8%

**Population by Race/Ethnicity**

### Race and Ethnicity Percent Composition



In 2011A, the predominant race/ethnicity category in this study area is **White**. The race & ethnicity category least represented in this geography is **American Indian, Alaska Native**.

A: White  
 B: Asian Pac Islr  
 C: Black  
 D: Hispanic  
 E: Amer Indian or Alaska Native  
 F: Other or Multi Race

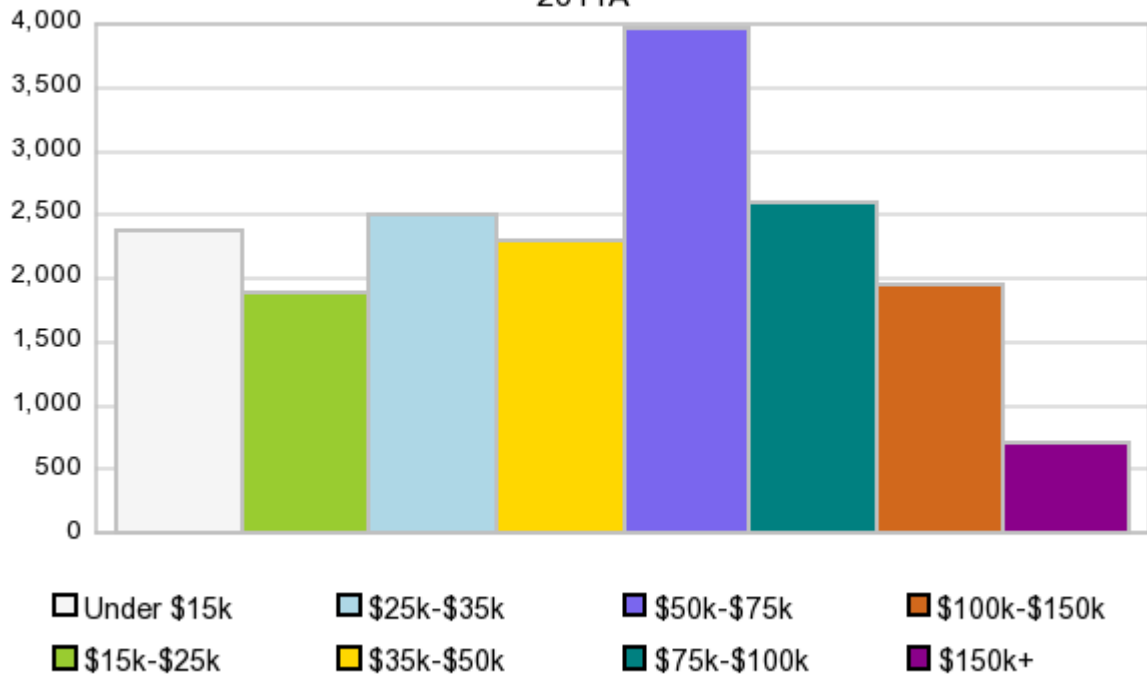
### Race & Ethnicity

	2000		2010		2011A		2016		Percent Change	
	Census	%	Census	%	Estimate	%	Projection	%	2000 to 2010	2011 to 2016
White	40,221	95.2%	42,746	92.7%	43,264	92.7%	45,330	92.8%	6.3%	4.8%
Black	232	0.6%	383	0.8%	387	0.8%	405	0.8%	65.1%	4.7%
American Indian or Alaska Native	140	0.3%	129	0.3%	131	0.3%	143	0.3%	-7.9%	9.2%
Asian/Hawaiian/PI	302	0.7%	609	1.3%	614	1.3%	634	1.3%	101.7%	3.3%
Some Other Race	929	2.2%	1,612	3.5%	1,503	3.2%	1,574	3.2%	73.5%	4.7%
Two or More Races	435	1.0%	623	1.4%	757	1.6%	781	1.6%	43.2%	3.2%
Hispanic Ethnicity	1,970	4.7%	3,432	7.4%	3,844	8.2%	5,485	11.2%	74.2%	42.7%
Not Hispanic or Latino	40,289	95.3%	42,670	92.6%	42,814	91.8%	43,383	88.8%	5.9%	1.3%

### Households by Income

### Households by Income Group 2011A

In 2011A the predominant household income category in this study area is **\$50K - \$75K**, and the income group that is least represented in this geography is **\$150K +**.



#### HH Income Categories\*

	1990 Census		2000 Census		2011A Estimate		2016 Projection		Percent Change	
		%		%		%		%	1990 to 2000	2011 to 2016
\$0 - \$15,000	4,218	30.7%	2,521	15.8%	2,372	13.0%	2,261	11.9%	-40.2%	-4.7%
\$15,000 - \$24,999	2,884	21.0%	2,502	15.7%	1,883	10.3%	1,647	8.7%	-13.2%	-12.5%
\$25,000 - \$34,999	2,613	19.0%	2,508	15.7%	2,500	13.7%	2,399	12.6%	-4.0%	-4.0%
\$35,000 - \$49,999	2,175	15.8%	3,098	19.4%	2,288	12.6%	1,991	10.5%	42.4%	-13.0%
\$50,000 - \$74,999	1,287	9.4%	3,196	20.1%	3,947	21.7%	4,233	22.3%	148.3%	7.2%
\$75,000 - \$99,999	286	2.1%	1,196	7.5%	2,594	14.2%	3,171	16.7%	318.2%	22.2%
\$100,000 - \$149,999	151	1.1%	645	4.1%	1,942	10.7%	2,444	12.9%	327.2%	25.9%
\$150,000 +	126	0.9%	264	1.7%	703	3.9%	849	4.5%	109.5%	20.8%
Average Hhld Income	\$29,445		\$44,762		\$62,044		\$70,010		52.0%	12.8%
Median Hhld Income	\$24,079		\$37,025		\$50,374		\$56,223		53.8%	11.6%
Per Capita Income	\$11,084		\$16,874		\$24,982		\$28,030		52.2%	12.2%

\*This Census 2010 data has not yet been released

Current year data is for the year **2011**, 5 year projected data is for the year **2016**. More About Our Data.  
Demographic data © 2011 by Experian/Applied Geographic Solutions.

Business List data © 2011 by D&B®. All rights reserved. All D&B information is powered by DUNSRight™, D&B's Quality Process.

Alteryx, DemographicsNow.com and the Alteryx and DemographicsNow.com logos are trademarks of Alteryx, Inc.  
All rights reserved.

Privacy Statement | License Agreement