



Date: 05/02/12

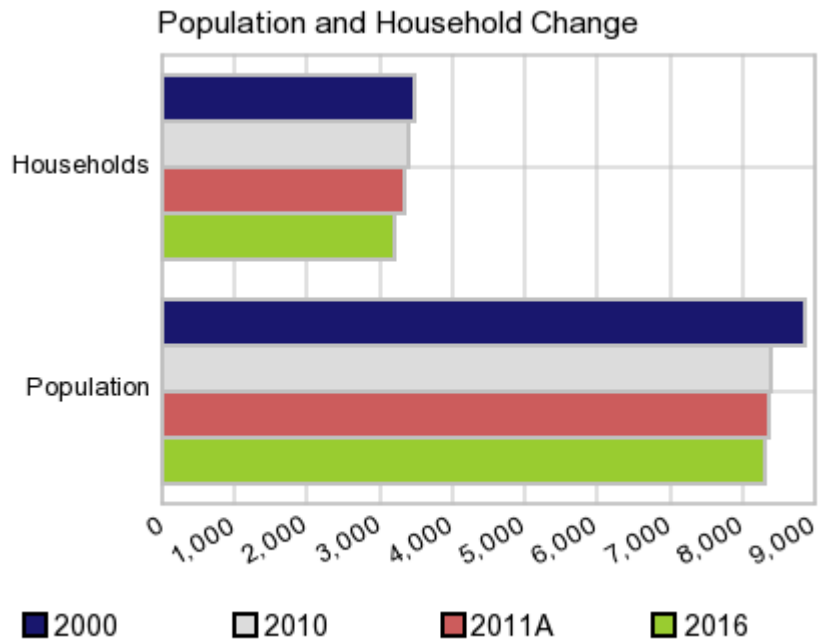
Current Geography Selection: (1 Selected) Counties: Butler County

Executive Summary Report with Charts

Population Demographics:

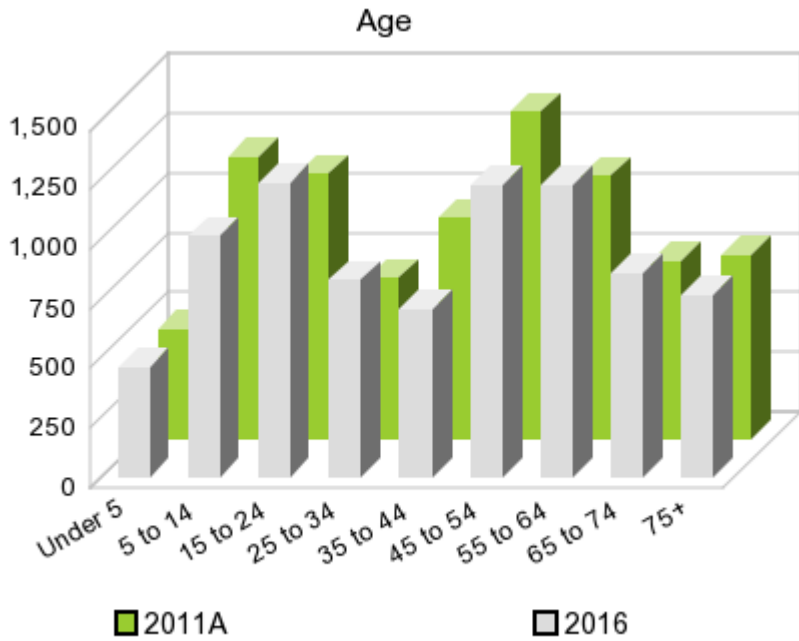
The number of households in the study area in 2000 was **3,462** and changed to **3,391** in 2010, representing a change of **-2.1%**. The household count in 2011A was **3,341** and the household projection for 2016 is **3,207**, a change of **-4.0%**.

The population in the study area in 2000 was **8,863** and in 2010 it was **8,395**, roughly a **-5.3%** change. The population in 2011A was **8,350** and the projection for 2016 is **8,309** representing a change of **-0.5%**.



	2000 Census	2010 Census	2011A Estimate	2016 Projection	Percent Change	
					2000 to 2010	2011 to 2016
Total Population	8,863	8,395	8,350	8,309	-5.3%	-0.5%
Total Households	3,462	3,391	3,341	3,207	3.4%	-4.0%

Population by Age



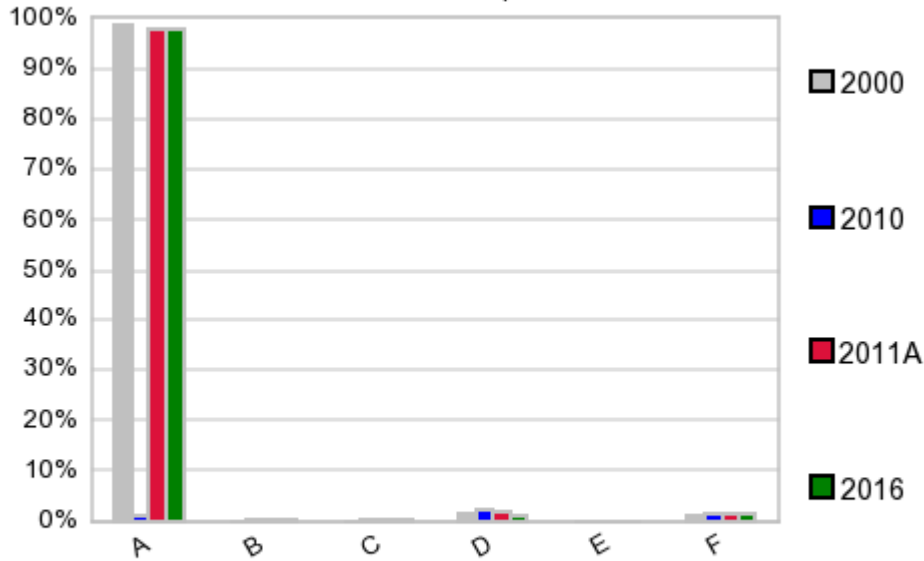
In 1990, the median age of the total population in the study area was **37**, and in 2000, it was **39**. The median age in 2011A is **44** and it is predicted to change in five years to **44** years. In 2011A, females represented **49.0%** of the population with a median age of **45** and males represented **51.0%** of the population with a median age of **42** years. In 2011A, the most prominent age group in this geography is **Age 45 to 54** years. The age group least represented in this geography is **0 to 4** years.

Age Groups*

	1990 Census		2000 Census		2011A Estimate		2016 Projection		Percent Change	
		%		%		%		%	1990 to 2000	2011 to 2016
0 to 4	614	7.1%	606	6.8%	460	5.5%	459	5.5%	-1.3%	-0.2%
5 to 14	1,441	16.6%	1,368	15.4%	1,185	14.2%	1,013	12.2%	-5.1%	-14.5%
15 to 19	556	6.4%	704	7.9%	610	7.3%	624	7.5%	26.6%	2.3%
20 to 24	352	4.1%	381	4.3%	500	6.0%	607	7.3%	8.2%	21.4%
25 to 34	1,155	13.3%	910	10.3%	670	8.0%	827	10.0%	-21.2%	23.4%
35 to 44	1,106	12.7%	1,340	15.1%	924	11.1%	704	8.5%	21.2%	-23.8%
45 to 54	826	9.5%	1,163	13.1%	1,374	16.5%	1,227	14.8%	40.8%	-10.7%
55 to 64	874	10.1%	832	9.4%	1,105	13.2%	1,228	14.8%	-4.8%	11.1%
65 to 74	859	9.9%	786	8.9%	746	8.9%	858	10.3%	-8.5%	15.0%
75 +	901	10.4%	776	8.8%	774	9.3%	760	9.1%	-13.9%	-1.8%

Population by Race/Ethnicity

Race and Ethnicity Percent Composition



In 2011A, the predominant race/ethnicity category in this study area is **White**. The race & ethnicity category least represented in this geography is **American Indian, Alaska Native**.

A: White
 B: Asian Pac Islr
 C: Black
 D: Hispanic
 E: Amer Indian or Alaska Native
 F: Other or Multi Race

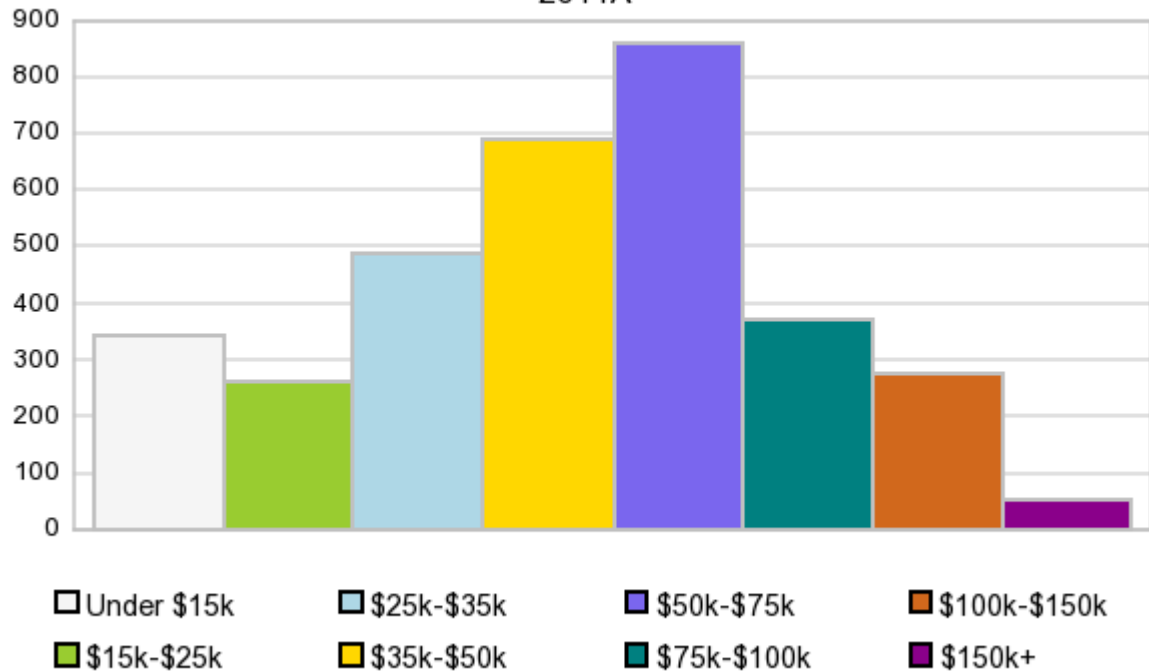
Race & Ethnicity

	2000 Census		2010 Census		2011A Estimate		2016 Projection		Percent Change	
		%		%		%		%	2000 to 2010	2011 to 2016
White	8,718	98.4%	8,192	97.6%	8,146	97.6%	8,105	97.5%	-6.0%	-0.5%
Black	9	0.1%	24	0.3%	24	0.3%	25	0.3%	166.7%	4.2%
American Indian or Alaska Native	11	0.1%	11	0.1%	11	0.1%	12	0.1%	0.0%	9.1%
Asian/Hawaiian/PI	16	0.2%	27	0.3%	27	0.3%	27	0.3%	68.8%	0.0%
Some Other Race	72	0.8%	84	1.0%	101	1.2%	101	1.2%	16.7%	0.0%
Two or More Races	36	0.4%	57	0.7%	40	0.5%	40	0.5%	58.3%	0.0%
Hispanic Ethnicity	147	1.7%	195	2.3%	172	2.1%	103	1.2%	32.7%	-40.1%
Not Hispanic or Latino	8,716	98.3%	8,200	97.7%	8,177	97.9%	8,207	98.8%	-5.9%	0.4%

Households by Income

Households by Income Group 2011A

In 2011A the predominant household income category in this study area is **\$50K - \$75K**, and the income group that is least represented in this geography is **\$150K +**.



HH Income Categories*

	1990 Census		2000 Census		2011A Estimate		2016 Projection		Percent Change	
		%		%		%		%	1990 to 2000	2011 to 2016
\$0 - \$15,000	976	29.8%	522	15.1%	342	10.2%	270	8.4%	-46.5%	-21.1%
\$15,000 - \$24,999	778	23.7%	548	15.8%	260	7.8%	181	5.6%	-29.6%	-30.4%
\$25,000 - \$34,999	662	20.2%	571	16.5%	489	14.6%	438	13.7%	-13.7%	-10.4%
\$35,000 - \$49,999	521	15.9%	729	21.1%	691	20.7%	637	19.9%	39.9%	-7.8%
\$50,000 - \$74,999	228	7.0%	724	20.9%	858	25.7%	880	27.4%	217.5%	2.6%
\$75,000 - \$99,999	69	2.1%	237	6.9%	371	11.1%	415	12.9%	243.5%	11.9%
\$100,000 - \$149,999	12	0.4%	91	2.6%	276	8.3%	333	10.4%	658.3%	20.7%
\$150,000 +	22	0.7%	38	1.1%	53	1.6%	53	1.7%	72.7%	0.0%
Average Hhld Income	\$30,278		\$42,068		\$54,758		\$60,392		38.9%	10.3%
Median Hhld Income	\$23,416		\$36,562		\$47,017		\$52,086		56.1%	10.8%
Per Capita Income	\$11,552		\$16,432		\$22,230		\$23,685		42.3%	6.5%

*This Census 2010 data has not yet been released

Current year data is for the year **2011**, 5 year projected data is for the year **2016**. More About Our Data.
Demographic data © 2011 by Experian/Applied Geographic Solutions.

Business List data © 2011 by D&B®. All rights reserved. All D&B information is powered by DUNSRight™, D&B's Quality Process.

Alteryx, DemographicsNow.com and the Alteryx and DemographicsNow.com logos are trademarks of Alteryx, Inc.
All rights reserved.

Privacy Statement | License Agreement