



Date: 05/02/12

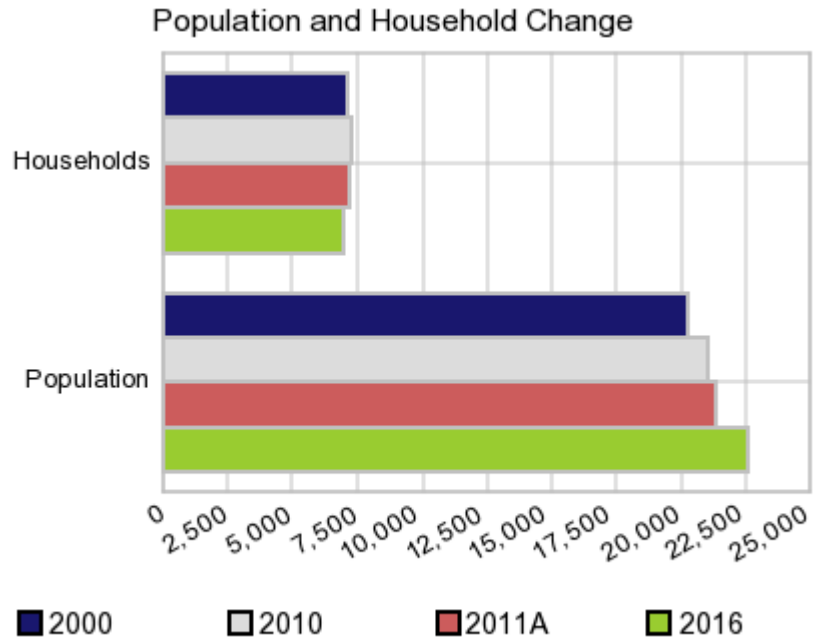
Current Geography Selection: (1 Selected) Counties: Dakota County

Executive Summary Report with Charts

Population Demographics:

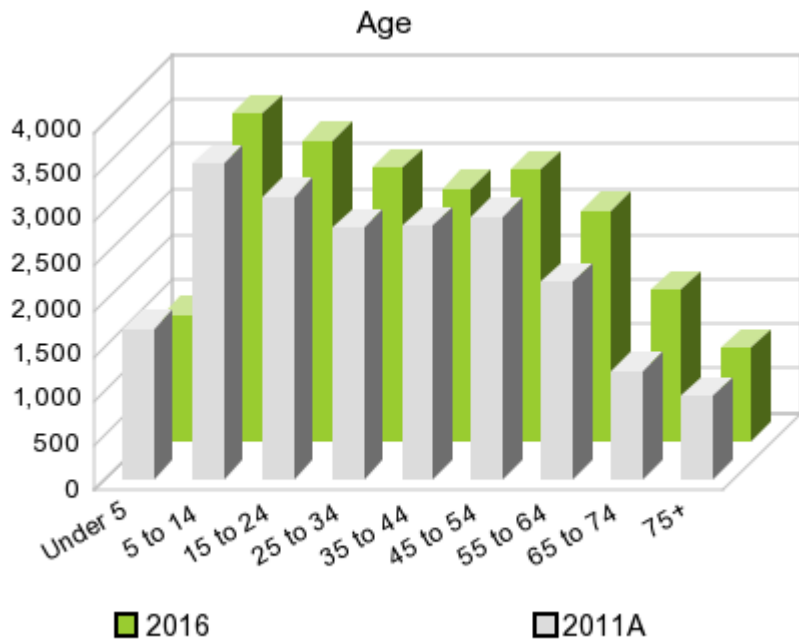
The number of households in the study area in 2000 was **7,095** and changed to **7,218** in 2010, representing a change of **1.7%**. The household count in 2011A was **7,160** and the household projection for 2016 is **6,934**, a change of **-3.2%**.

The population in the study area in 2000 was **20,253** and in 2010 it was **21,006**, roughly a **3.7%** change. The population in 2011A was **21,328** and the projection for 2016 is **22,614** representing a change of **6.0%**.



	2000 Census	2010 Census	2011A Estimate	2016 Projection	Percent Change	
					2000 to 2010	2011 to 2016
Total Population	20,253	21,006	21,328	22,614	3.7%	6.0%
Total Households	7,095	7,218	7,160	6,934	19.6%	-3.2%

Population by Age



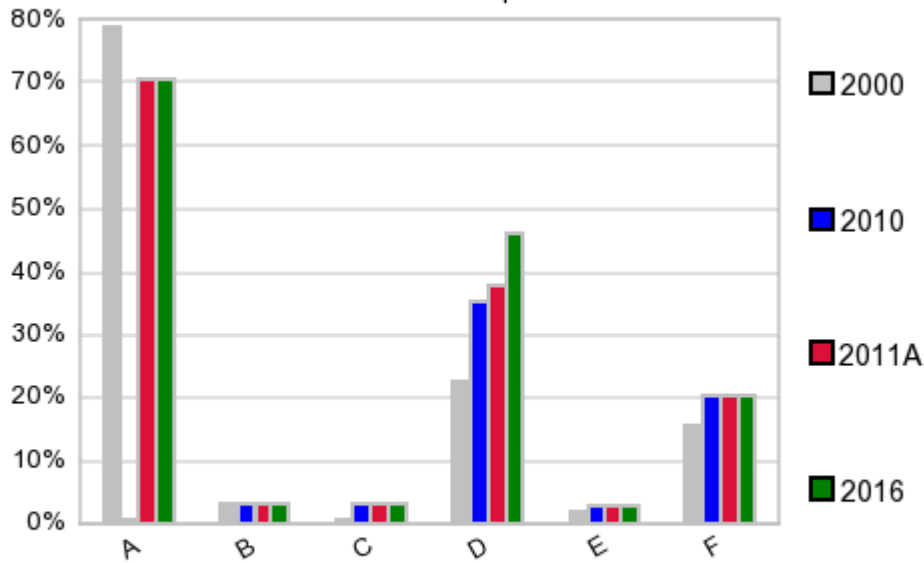
In 1990, the median age of the total population in the study area was **31**, and in 2000, it was **31**. The median age in 2011A is **33** and it is predicted to change in five years to **34** years. In 2011A, females represented **49.7%** of the population with a median age of **34** and males represented **50.4%** of the population with a median age of **32** years. In 2011A, the most prominent age group in this geography is **Age 5 to 14** years. The age group least represented in this geography is **75 +** years.

Age Groups*

	1990		2000		2011A		2016		Percent Change	
	Census	%	Census	%	Estimate	%	Projection	%	1990 to 2000	2011 to 2016
0 to 4	1,433	8.6%	1,772	8.8%	1,689	7.9%	1,408	6.2%	23.7%	-16.6%
5 to 14	2,884	17.2%	3,409	16.8%	3,529	16.5%	3,661	16.2%	18.2%	3.7%
15 to 19	1,190	7.1%	1,619	8.0%	1,618	7.6%	1,694	7.5%	36.1%	4.7%
20 to 24	1,084	6.5%	1,425	7.0%	1,546	7.2%	1,650	7.3%	31.5%	6.7%
25 to 34	2,862	17.1%	2,910	14.4%	2,817	13.2%	3,056	13.5%	1.7%	8.5%
35 to 44	2,419	14.4%	3,042	15.0%	2,831	13.3%	2,804	12.4%	25.8%	-1.0%
45 to 54	1,622	9.7%	2,483	12.3%	2,946	13.8%	3,033	13.4%	53.1%	3.0%
55 to 64	1,287	7.7%	1,579	7.8%	2,196	10.3%	2,574	11.4%	22.7%	17.2%
65 to 74	1,058	6.3%	1,025	5.1%	1,217	5.7%	1,690	7.5%	-3.1%	38.9%
75 +	903	5.4%	989	4.9%	936	4.4%	1,040	4.6%	9.5%	11.1%

Population by Race/Ethnicity

Race and Ethnicity Percent Composition



In 2011A, the predominant race/ethnicity category in this study area is **White**. The race & ethnicity category least represented in this geography is **American Indian, Alaska Native**.

A: White
 B: Asian Pac Islidr
 C: Black
 D: Hispanic
 E: Amer Indian or Alaska Native
 F: Other or Multi Race

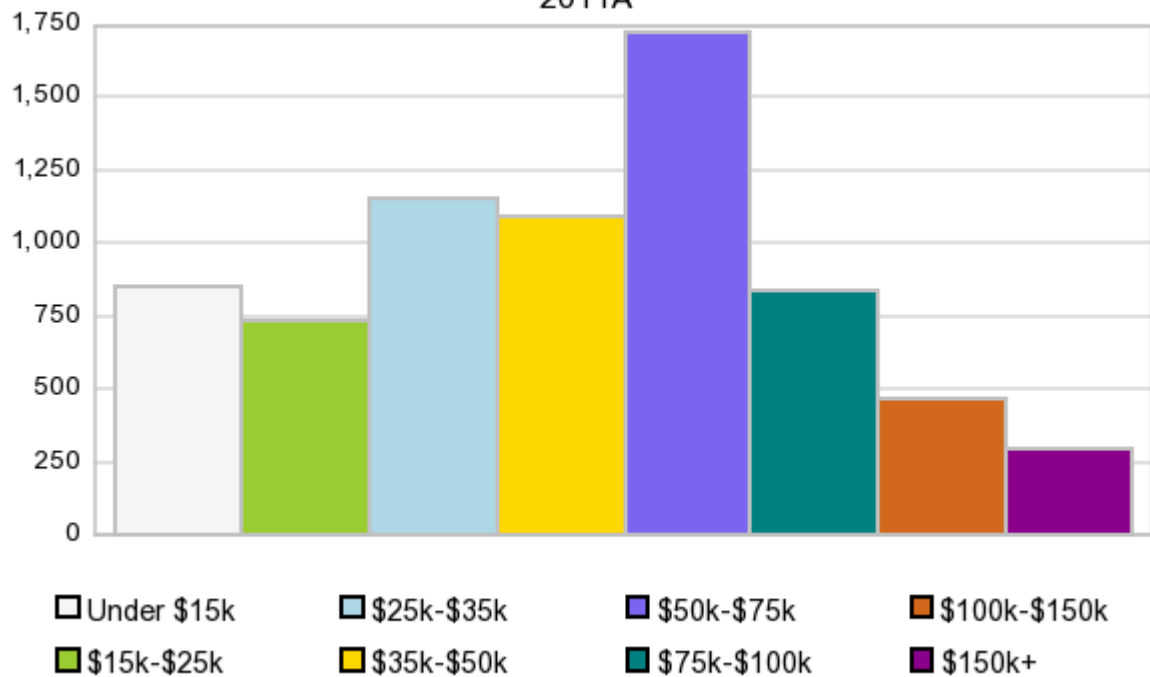
Race & Ethnicity

Race & Ethnicity	2000		2010		2011A		2016		Percent Change	
	Census	%	Census	%	Estimate	%	Projection	%	2000 to 2010	2011 to 2016
White	15,968	78.8%	14,810	70.5%	15,046	70.6%	15,989	70.7%	-7.3%	6.3%
Black	126	0.6%	660	3.1%	668	3.1%	699	3.1%	423.8%	4.6%
American Indian or Alaska Native	377	1.9%	566	2.7%	579	2.7%	629	2.8%	50.1%	8.6%
Asian/Hawaiian/PI	636	3.1%	675	3.2%	682	3.2%	713	3.2%	6.1%	4.5%
Some Other Race	2,615	12.9%	3,812	18.1%	3,550	16.6%	3,735	16.5%	45.8%	5.2%
Two or More Races	531	2.6%	483	2.3%	803	3.8%	849	3.8%	-9.0%	5.7%
Hispanic Ethnicity	4,581	22.6%	7,419	35.3%	8,016	37.6%	10,395	46.0%	62.0%	29.7%
Not Hispanic or Latino	15,672	77.4%	13,587	64.7%	13,313	62.4%	12,219	54.0%	-13.3%	-8.2%

Households by Income

Households by Income Group 2011A

In 2011A the predominant household income category in this study area is **\$50K - \$75K**, and the income group that is least represented in this geography is **\$150K +**.



HH Income Categories*

	1990 Census		2000 Census		2011A Estimate		2016 Projection		Percent Change	
		%		%		%		%	1990 to 2000	2011 to 2016
\$0 - \$15,000	1,674	27.7%	1,024	14.4%	858	12.0%	758	10.9%	-38.8%	-11.7%
\$15,000 - \$24,999	1,278	21.2%	1,122	15.8%	736	10.3%	585	8.4%	-12.2%	-20.5%
\$25,000 - \$34,999	1,150	19.1%	1,080	15.2%	1,153	16.1%	1,129	16.3%	-6.1%	-2.1%
\$35,000 - \$49,999	1,111	18.4%	1,373	19.4%	1,095	15.3%	955	13.8%	23.6%	-12.8%
\$50,000 - \$74,999	676	11.2%	1,429	20.1%	1,720	24.0%	1,798	25.9%	111.4%	4.5%
\$75,000 - \$99,999	103	1.7%	644	9.1%	836	11.7%	888	12.8%	525.2%	6.2%
\$100,000 - \$149,999	20	0.3%	333	4.7%	465	6.5%	491	7.1%	1,565.0%	5.6%
\$150,000 +	20	0.3%	90	1.3%	297	4.1%	330	4.8%	350.0%	11.1%
Average Hhld Income	\$29,171		\$45,239		\$54,905		\$60,127		55.1%	9.5%
Median Hhld Income	\$25,518		\$38,679		\$46,297		\$50,468		51.6%	9.0%
Per Capita Income	\$10,575		\$15,848		\$18,586		\$18,605		49.9%	0.1%

*This Census 2010 data has not yet been released

Current year data is for the year **2011**, 5 year projected data is for the year **2016**. More About Our Data.
Demographic data © 2011 by Experian/Applied Geographic Solutions.

Business List data © 2011 by D&B®. All rights reserved. All D&B information is powered by DUNSRight™, D&B's Quality Process.

Alteryx, DemographicsNow.com and the Alteryx and DemographicsNow.com logos are trademarks of Alteryx, Inc.
All rights reserved.

Privacy Statement | License Agreement