



Date: 05/02/12

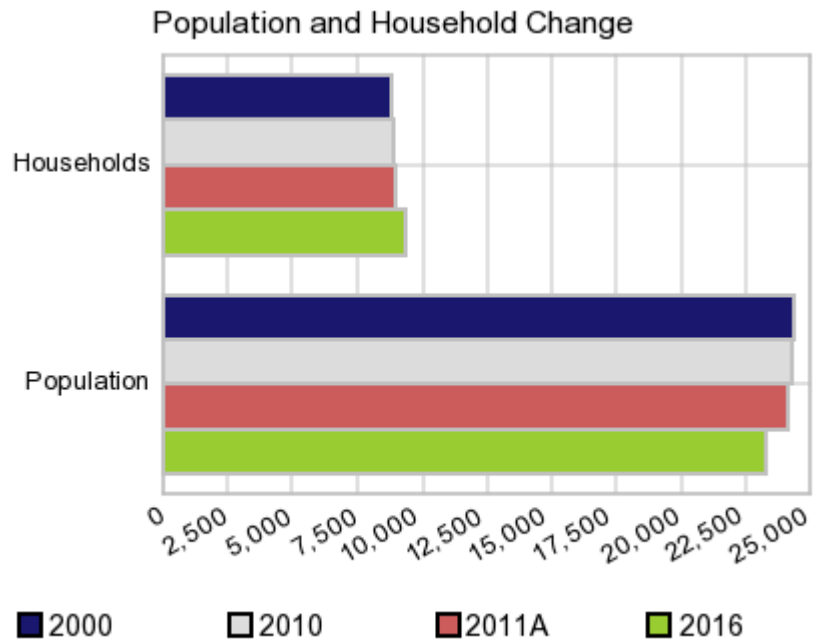
Current Geography Selection: (1 Selected) Counties: Dawson County

## Executive Summary Report with Charts

### Population Demographics:

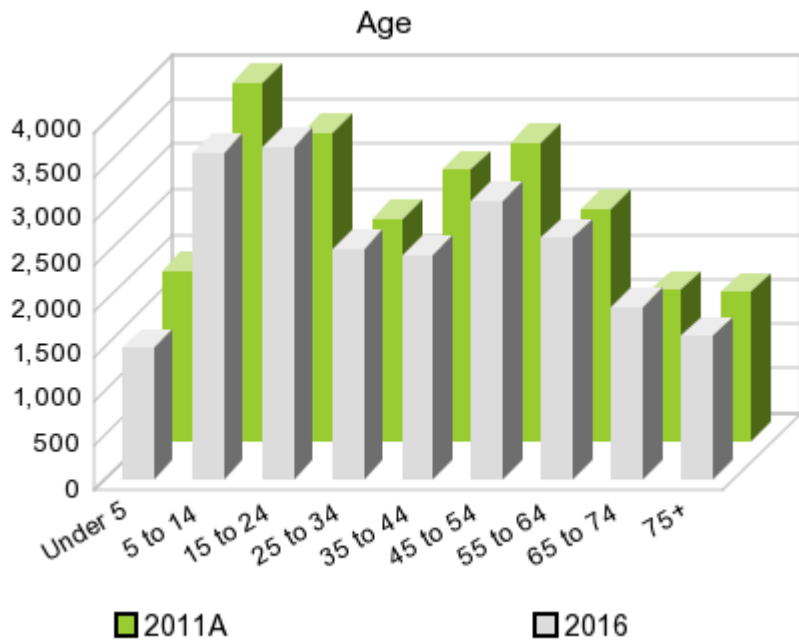
The number of households in the study area in 2000 was **8,824** and changed to **8,899** in 2010, representing a change of **0.9%**. The household count in 2011A was **8,991** and the household projection for 2016 is **9,353**, a change of **4.0%**.

The population in the study area in 2000 was **24,365** and in 2010 it was **24,326**, roughly a **-0.2%** change. The population in 2011A was **24,117** and the projection for 2016 is **23,297** representing a change of **-3.4%**.



	2000 Census	2010 Census	2011A Estimate	2016 Projection	Percent Change	
					2000 to 2010	2011 to 2016
Total Population	24,365	24,326	24,117	23,297	-0.2%	-3.4%
Total Households	8,824	8,899	8,991	9,353	13.7%	4.0%

### Population by Age



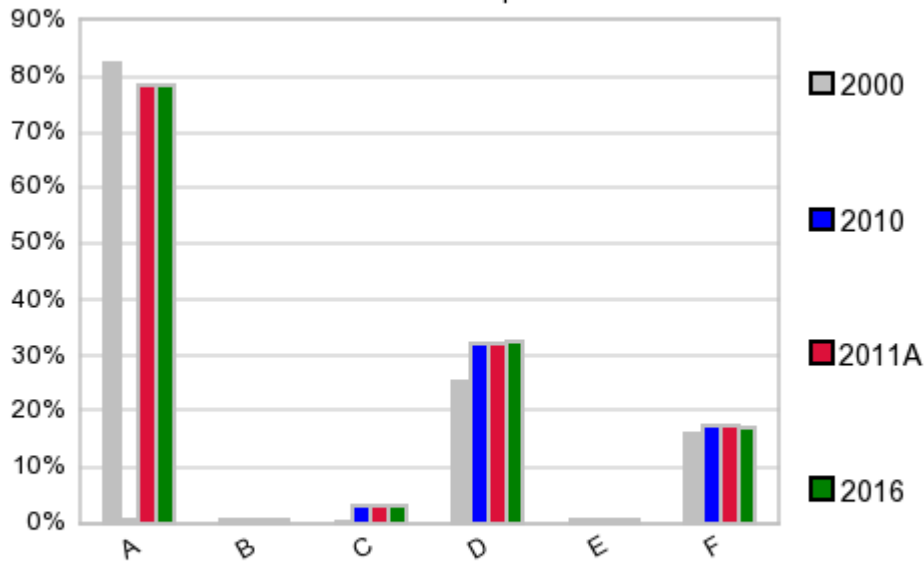
In 1990, the median age of the total population in the study area was **36**, and in 2000, it was **34**. The median age in 2011A is **36** and it is predicted to change in five years to **36** years. In 2011A, females represented **49.5%** of the population with a median age of **37** and males represented **50.5%** of the population with a median age of **35** years. In 2011A, the most prominent age group in this geography is **Age 5 to 14** years. The age group least represented in this geography is **18 to 24** years.

#### Age Groups\*

	1990		2000		2011A		2016		Percent Change	
	Census	%	Census	%	Estimate	%	Projection	%	1990 to 2000	2011 to 2016
0 to 4	1,406	7.1%	2,043	8.4%	1,911	7.9%	1,480	6.4%	45.3%	-22.6%
5 to 14	3,250	16.3%	3,929	16.1%	3,996	16.6%	3,663	15.7%	20.9%	-8.3%
15 to 19	1,378	6.9%	1,835	7.5%	1,927	8.0%	1,902	8.2%	33.2%	-1.3%
20 to 24	877	4.4%	1,361	5.6%	1,510	6.3%	1,819	7.8%	55.2%	20.5%
25 to 34	2,728	13.7%	3,263	13.4%	2,490	10.3%	2,576	11.1%	19.6%	3.5%
35 to 44	2,894	14.5%	3,458	14.2%	3,025	12.5%	2,517	10.8%	19.5%	-16.8%
45 to 54	2,057	10.3%	3,060	12.6%	3,331	13.8%	3,116	13.4%	48.8%	-6.5%
55 to 64	1,891	9.5%	1,973	8.1%	2,592	10.7%	2,694	11.6%	4.3%	3.9%
65 to 74	1,824	9.1%	1,663	6.8%	1,679	7.0%	1,931	8.3%	-8.8%	15.0%
75 +	1,635	8.2%	1,780	7.3%	1,655	6.9%	1,597	6.9%	8.9%	-3.5%

#### Population by Race/Ethnicity

### Race and Ethnicity Percent Composition



In 2011A, the predominant race/ethnicity category in this study area is **White**. The race & ethnicity category least represented in this geography is **Asian or Pacific Islander**.

A: White  
 B: Asian Pac Islidr  
 C: Black  
 D: Hispanic  
 E: Amer Indian or Alaska Native  
 F: Other or Multi Race

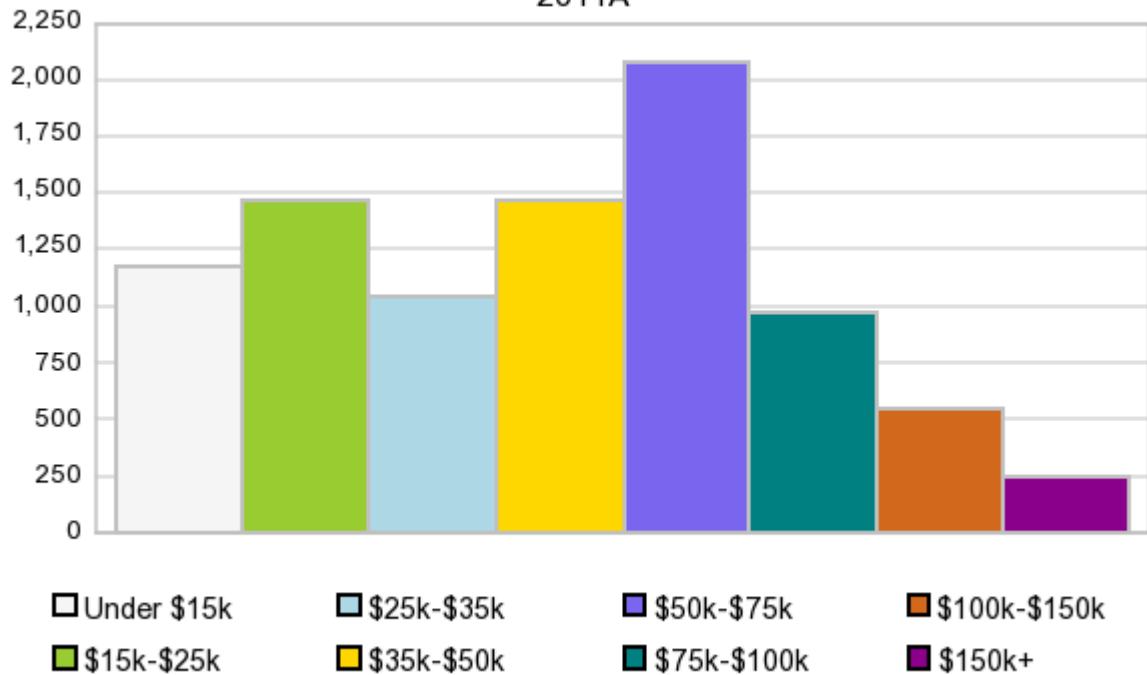
### Race & Ethnicity

Race & Ethnicity	2000 Census		2010 Census		2011A Estimate		2016 Projection		Percent Change	
	Count	%	Count	%	Count	%	Count	%	2000 to 2010	2011 to 2016
White	20,058	82.3%	18,978	78.0%	18,824	78.1%	18,217	78.2%	-5.4%	-3.2%
Black	76	0.3%	744	3.1%	735	3.1%	702	3.0%	878.9%	-4.5%
American Indian or Alaska Native	164	0.7%	199	0.8%	199	0.8%	197	0.9%	21.3%	-1.0%
Asian/Hawaiian/PI	164	0.7%	185	0.8%	183	0.8%	174	0.7%	12.8%	-4.9%
Some Other Race	3,530	14.5%	3,708	15.2%	3,777	15.7%	3,626	15.6%	5.0%	-4.0%
Two or More Races	373	1.5%	512	2.1%	399	1.7%	381	1.6%	37.3%	-4.5%
Hispanic Ethnicity	6,178	25.4%	7,746	31.8%	7,702	31.9%	7,526	32.3%	25.4%	-2.3%
Not Hispanic or Latino	18,187	74.6%	16,580	68.2%	16,415	68.1%	15,771	67.7%	-8.8%	-3.9%

### Households by Income

### Households by Income Group 2011A

In 2011A the predominant household income category in this study area is **\$50K - \$75K**, and the income group that is least represented in this geography is **\$150K +**.



#### HH Income Categories\*

	1990 Census		2000 Census		2011A Estimate		2016 Projection		Percent Change	
		%		%		%		%	1990 to 2000	2011 to 2016
\$0 - \$15,000	2,317	29.6%	1,406	15.9%	1,175	13.1%	1,119	12.0%	-39.3%	-4.8%
\$15,000 - \$24,999	2,057	26.3%	1,557	17.6%	1,468	16.3%	1,469	15.7%	-24.3%	0.1%
\$25,000 - \$34,999	1,429	18.3%	1,284	14.6%	1,036	11.5%	960	10.3%	-10.1%	-7.3%
\$35,000 - \$49,999	1,255	16.0%	1,914	21.7%	1,470	16.4%	1,335	14.3%	52.5%	-9.2%
\$50,000 - \$74,999	537	6.9%	1,659	18.8%	2,074	23.1%	2,329	24.9%	208.9%	12.3%
\$75,000 - \$99,999	130	1.7%	527	6.0%	968	10.8%	1,199	12.8%	305.4%	23.9%
\$100,000 - \$149,999	75	1.0%	307	3.5%	553	6.2%	669	7.2%	309.3%	21.0%
\$150,000 +	52	0.7%	170	1.9%	247	2.7%	273	2.9%	226.9%	10.5%
Average Hhld Income	\$27,251		\$43,397		\$52,639		\$58,104		59.3%	10.4%
Median Hhld Income	\$22,500		\$36,193		\$42,239		\$46,842		60.9%	10.9%
Per Capita Income	\$10,839		\$15,717		\$19,786		\$23,522		45.0%	18.9%

\*This Census 2010 data has not yet been released

Current year data is for the year **2011**, 5 year projected data is for the year **2016**. More About Our Data.  
Demographic data © 2011 by Experian/Applied Geographic Solutions.

Business List data © 2011 by D&B®. All rights reserved. All D&B information is powered by DUNSRight™, D&B's Quality Process.

Alteryx, DemographicsNow.com and the Alteryx and DemographicsNow.com logos are trademarks of Alteryx, Inc.  
All rights reserved.

Privacy Statement | License Agreement