



Date: 05/02/12

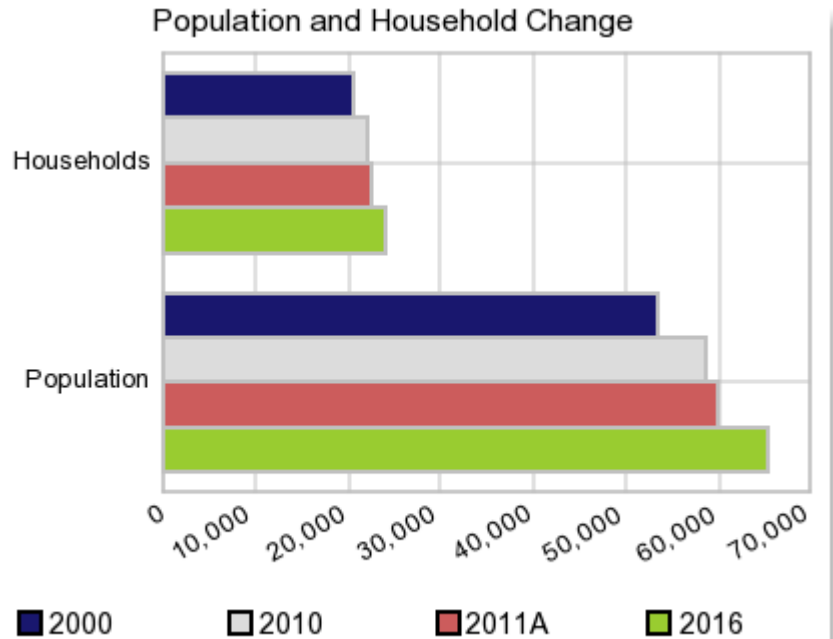
Current Geography Selection: (1 Selected) Counties: Hall County

Executive Summary Report with Charts

Population Demographics:

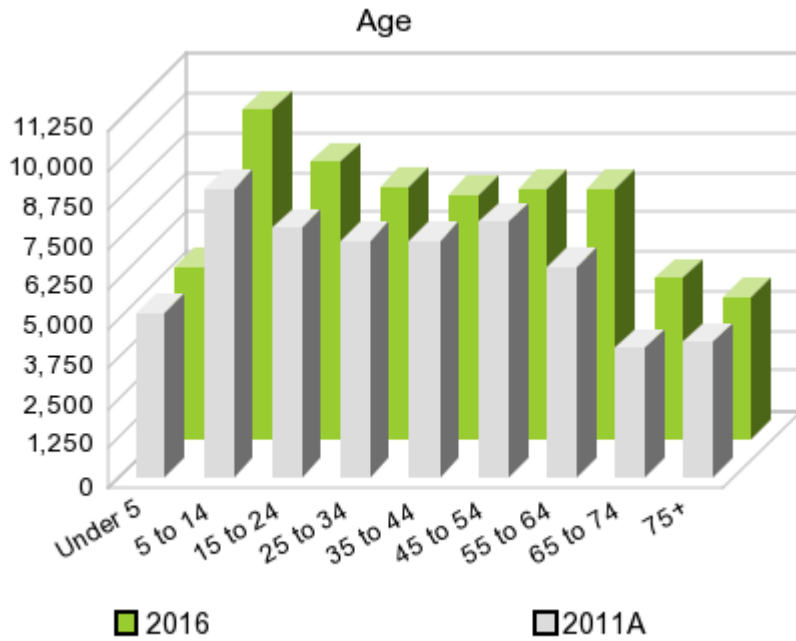
The number of households in the study area in 2000 was **20,356** and changed to **22,196** in 2010, representing a change of **9.0%**. The household count in 2011A was **22,554** and the household projection for 2016 is **23,971**, a change of **6.3%**.

The population in the study area in 2000 was **53,534** and in 2010 it was **58,607**, roughly a **9.5%** change. The population in 2011A was **59,942** and the projection for 2016 is **65,260** representing a change of **8.9%**.



	2000 Census	2010 Census	2011A Estimate	2016 Projection	Percent Change	
					2000 to 2010	2011 to 2016
Total Population	53,534	58,607	59,942	65,260	9.5%	8.9%
Total Households	20,356	22,196	22,554	23,971	18.8%	6.3%

Population by Age



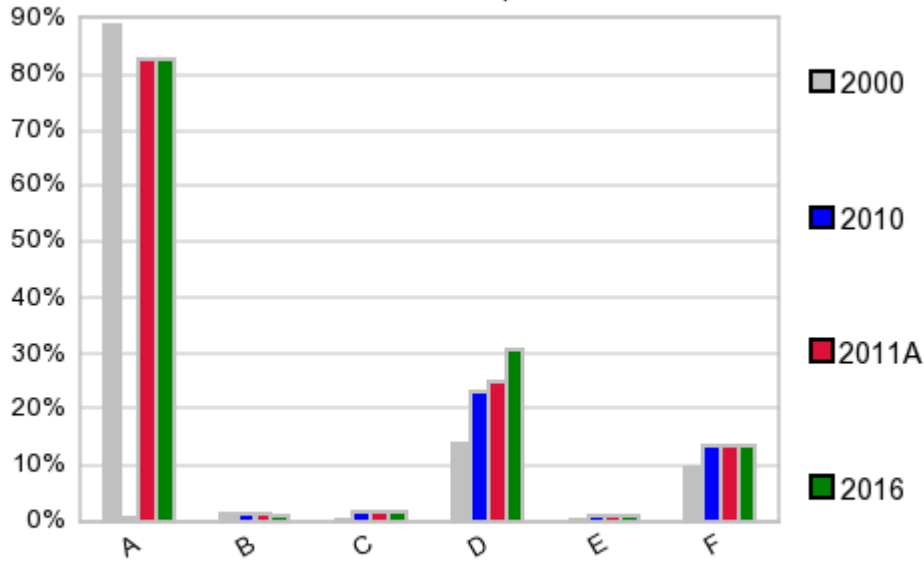
In 1990, the median age of the total population in the study area was **33**, and in 2000, it was **36**. The median age in 2011A is **36** and it is predicted to change in five years to **35** years. In 2011A, females represented **50.3%** of the population with a median age of **37** and males represented **49.7%** of the population with a median age of **34** years. In 2011A, the most prominent age group in this geography is **Age 5 to 14** years. The age group least represented in this geography is **18 to 24** years.

Age Groups*

	1990		2000		2011A		2016		Percent Change	
	Census	%	Census	%	Estimate	%	Projection	%	1990 to 2000	2011 to 2016
0 to 4	3,819	7.8%	4,090	7.6%	5,185	8.7%	5,408	8.3%	7.1%	4.3%
5 to 14	7,852	16.1%	8,033	15.0%	9,046	15.1%	10,363	15.9%	2.3%	14.6%
15 to 19	3,442	7.0%	3,822	7.1%	4,048	6.8%	4,462	6.8%	11.0%	10.2%
20 to 24	2,940	6.0%	3,350	6.3%	3,823	6.4%	4,225	6.5%	13.9%	10.5%
25 to 34	7,846	16.0%	7,045	13.2%	7,446	12.4%	7,916	12.1%	-10.2%	6.3%
35 to 44	7,242	14.8%	8,120	15.2%	7,389	12.3%	7,673	11.8%	12.1%	3.8%
45 to 54	4,592	9.4%	7,121	13.3%	8,047	13.4%	7,856	12.0%	55.1%	-2.4%
55 to 64	4,242	8.7%	4,476	8.4%	6,657	11.1%	7,865	12.1%	5.5%	18.1%
65 to 74	3,743	7.7%	3,715	6.9%	4,049	6.8%	5,076	7.8%	-0.7%	25.4%
75 +	3,207	6.6%	3,762	7.0%	4,245	7.1%	4,411	6.8%	17.3%	3.9%

Population by Race/Ethnicity

Race and Ethnicity Percent Composition



In 2011A, the predominant race/ethnicity category in this study area is **White**. The race & ethnicity category least represented in this geography is **American Indian, Alaska Native**.

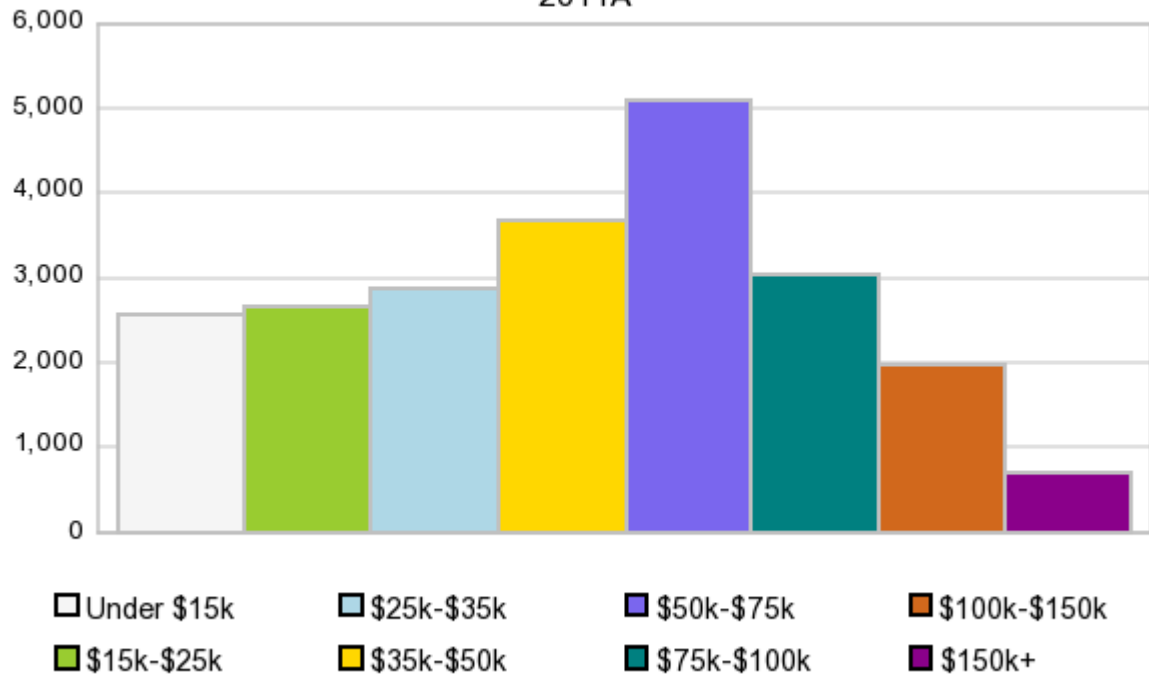
A: White
 B: Asian Pac Islr
 C: Black
 D: Hispanic
 E: Amer Indian or Alaska Native
 F: Other or Multi Race

Race & Ethnicity	2000		2010		2011A		2016		Percent Change	
	Census	%	Census	%	Estimate	%	Projection	%	2000 to 2010	2011 to 2016
White	47,467	88.7%	48,413	82.6%	49,530	82.6%	53,987	82.7%	2.0%	9.0%
Black	195	0.4%	1,023	1.7%	1,044	1.7%	1,125	1.7%	424.6%	7.8%
American Indian or Alaska Native	164	0.3%	529	0.9%	545	0.9%	612	0.9%	222.6%	12.3%
Asian/Hawaiian/PI	659	1.2%	719	1.2%	733	1.2%	789	1.2%	9.1%	7.6%
Some Other Race	4,384	8.2%	6,701	11.4%	6,829	11.4%	7,374	11.3%	52.9%	8.0%
Two or More Races	665	1.2%	1,222	2.1%	1,260	2.1%	1,373	2.1%	83.8%	9.0%
Hispanic Ethnicity	7,497	14.0%	13,653	23.3%	14,911	24.9%	19,917	30.5%	82.1%	33.6%
Not Hispanic or Latino	46,037	86.0%	44,954	76.7%	45,030	75.1%	45,342	69.5%	-2.4%	0.7%

Households by Income

Households by Income Group 2011A

In 2011A the predominant household income category in this study area is **\$50K - \$75K**, and the income group that is least represented in this geography is **\$150K +**.



HH Income Categories*

	1990 Census		2000 Census		2011A Estimate		2016 Projection		Percent Change	
	Count	%	Count	%	Count	%	Count	%	1990 to 2000	2000 to 2011
\$0 - \$15,000	5,077	27.2%	3,400	16.7%	2,556	11.3%	2,266	9.5%	-33.0%	-11.3%
\$15,000 - \$24,999	4,023	21.5%	3,212	15.8%	2,653	11.8%	2,464	10.3%	-20.2%	-7.1%
\$25,000 - \$34,999	3,671	19.7%	2,963	14.6%	2,853	12.7%	2,832	11.8%	-19.3%	-0.7%
\$35,000 - \$49,999	3,412	18.3%	4,037	19.8%	3,674	16.3%	3,588	15.0%	18.3%	-2.3%
\$50,000 - \$74,999	1,813	9.7%	4,163	20.5%	5,082	22.5%	5,594	23.3%	129.6%	10.1%
\$75,000 - \$99,999	372	2.0%	1,351	6.6%	3,051	13.5%	3,896	16.3%	263.2%	27.7%
\$100,000 - \$149,999	188	1.0%	807	4.0%	1,965	8.7%	2,482	10.4%	329.3%	26.3%
\$150,000 +	106	0.6%	423	2.1%	720	3.2%	849	3.5%	299.1%	17.9%
Average Hhld Income	\$29,590		\$44,830		\$59,135		\$65,422		51.5%	10.6%
Median Hhld Income	\$25,547		\$37,296		\$48,205		\$52,828		46.0%	9.6%
Per Capita Income	\$11,454		\$17,046		\$22,537		\$24,337		48.8%	8.0%

*This Census 2010 data has not yet been released

Current year data is for the year **2011**, 5 year projected data is for the year **2016**. More About Our Data.
Demographic data © 2011 by Experian/Applied Geographic Solutions.

Business List data © 2011 by D&B®. All rights reserved. All D&B information is powered by DUNSRight™, D&B's Quality Process.

Alteryx, DemographicsNow.com and the Alteryx and DemographicsNow.com logos are trademarks of Alteryx, Inc.
All rights reserved.

Privacy Statement | License Agreement