



Date: 05/02/12

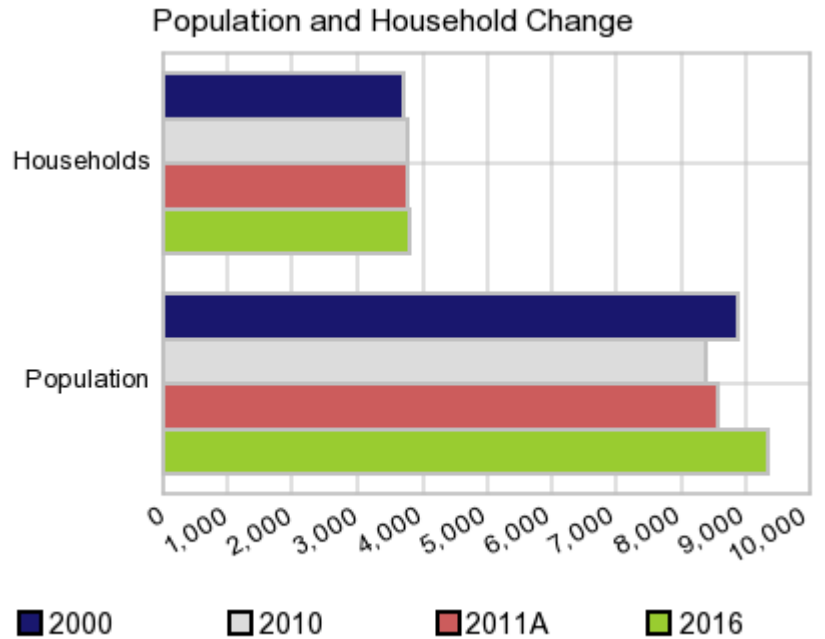
Current Geography Selection: (1 Selected) Counties: Keith County

Executive Summary Report with Charts

Population Demographics:

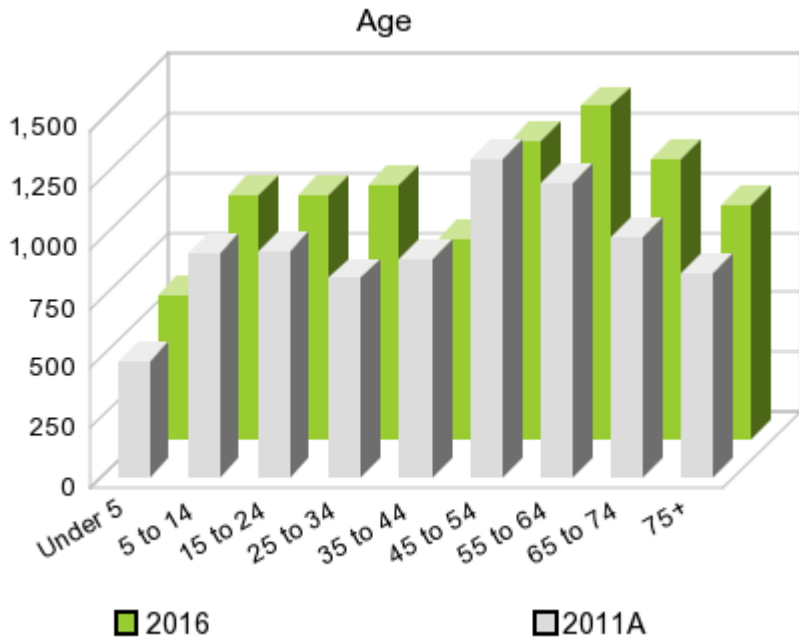
The number of households in the study area in 2000 was **3,707** and changed to **3,753** in 2010, representing a change of **1.2%**. The household count in 2011A was **3,764** and the household projection for 2016 is **3,808**, a change of **1.2%**.

The population in the study area in 2000 was **8,875** and in 2010 it was **8,368**, roughly a **-5.7%** change. The population in 2011A was **8,567** and the projection for 2016 is **9,351** representing a change of **9.2%**.



	2000 Census	2010 Census	2011A Estimate	2016 Projection	Percent Change	
					2000 to 2010	2011 to 2016
Total Population	8,875	8,368	8,567	9,351	-5.7%	9.2%
Total Households	3,707	3,753	3,764	3,808	9.4%	1.2%

Population by Age



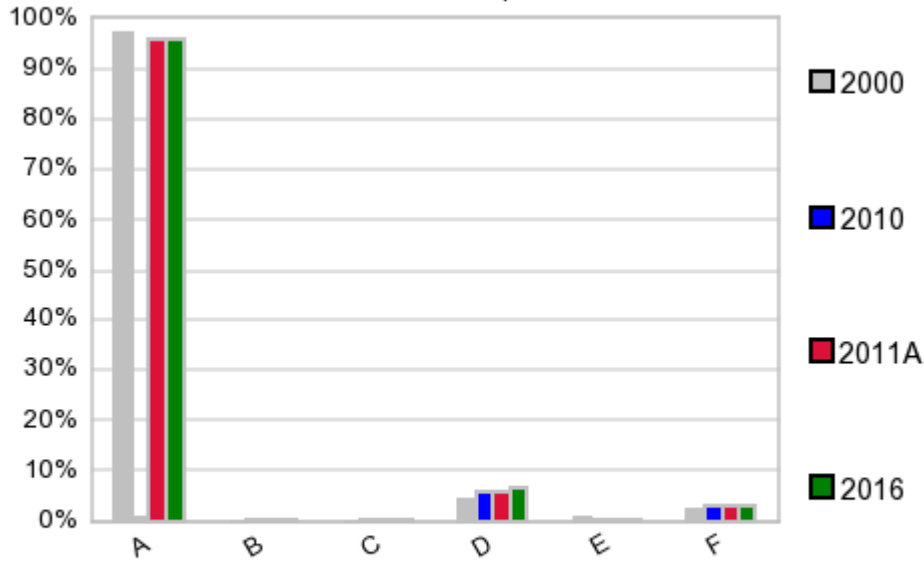
In 1990, the median age of the total population in the study area was **37**, and in 2000, it was **41**. The median age in 2011A is **46** and it is predicted to change in five years to **46** years. In 2011A, females represented **49.9%** of the population with a median age of **48** and males represented **50.1%** of the population with a median age of **44** years. In 2011A, the most prominent age group in this geography is **Age 45 to 54** years. The age group least represented in this geography is **15 to 19** years.

Age Groups*

	1990 Census		2000 Census		2011A Estimate		2016 Projection		Percent Change	
		%		%		%		%	1990 to 2000	2011 to 2016
0 to 4	603	7.0%	508	5.7%	489	5.7%	600	6.4%	-15.8%	22.7%
5 to 14	1,405	16.4%	1,277	14.4%	938	11.0%	1,024	11.0%	-9.1%	9.2%
15 to 19	575	6.7%	661	7.5%	445	5.2%	538	5.8%	15.0%	20.9%
20 to 24	299	3.5%	306	3.4%	501	5.8%	485	5.2%	2.3%	-3.2%
25 to 34	1,223	14.2%	877	9.9%	839	9.8%	1,059	11.3%	-28.3%	26.2%
35 to 44	1,132	13.2%	1,364	15.4%	919	10.7%	836	8.9%	20.5%	-9.0%
45 to 54	951	11.1%	1,222	13.8%	1,336	15.6%	1,252	13.4%	28.5%	-6.3%
55 to 64	946	11.0%	1,030	11.6%	1,234	14.4%	1,396	14.9%	8.9%	13.1%
65 to 74	810	9.4%	882	9.9%	1,005	11.7%	1,175	12.6%	8.9%	16.9%
75 +	640	7.5%	748	8.4%	859	10.0%	984	10.5%	16.9%	14.6%

Population by Race/Ethnicity

Race and Ethnicity Percent Composition



In 2011A, the predominant race/ethnicity category in this study area is **White**. The race & ethnicity category least represented in this geography is **Black**.

A: White
 B: Asian Pac Islr
 C: Black
 D: Hispanic
 E: Amer Indian or Alaska Native
 F: Other or Multi Race

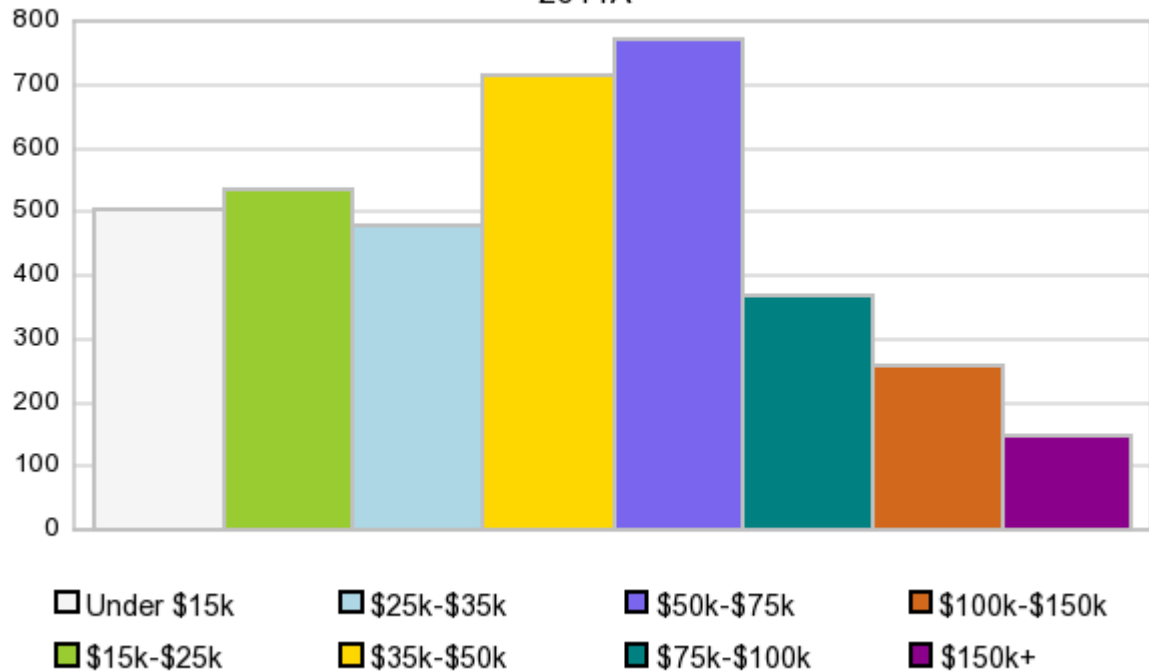
Race & Ethnicity

	2000		2010		2011A		2016		Percent Change	
	Census	%	Census	%	Estimate	%	Projection	%	2000 to 2010	2011 to 2016
White	8,587	96.8%	8,005	95.7%	8,195	95.7%	8,943	95.6%	-6.8%	9.1%
Black	7	0.1%	18	0.2%	19	0.2%	21	0.2%	157.1%	10.5%
American Indian or Alaska Native	63	0.7%	41	0.5%	42	0.5%	47	0.5%	-34.9%	11.9%
Asian/Hawaiian/PI	15	0.2%	33	0.4%	34	0.4%	37	0.4%	120.0%	8.8%
Some Other Race	132	1.5%	139	1.7%	178	2.1%	192	2.1%	5.3%	7.9%
Two or More Races	71	0.8%	132	1.6%	99	1.2%	110	1.2%	85.9%	11.1%
Hispanic Ethnicity	375	4.2%	474	5.7%	504	5.9%	627	6.7%	26.4%	24.4%
Not Hispanic or Latino	8,500	95.8%	7,894	94.3%	8,062	94.1%	8,723	93.3%	-7.1%	8.2%

Households by Income

Households by Income Group 2011A

In 2011A the predominant household income category in this study area is **\$50K - \$75K**, and the income group that is least represented in this geography is **\$150K +**.



HH Income Categories*

	1990 Census		2000 Census		2011A Estimate		2016 Projection		Percent Change	
		%		%		%		%	1990 to 2000	2011 to 2016
\$0 - \$15,000	987	28.8%	633	17.1%	504	13.4%	484	12.7%	-35.9%	-4.0%
\$15,000 - \$24,999	949	27.7%	760	20.5%	533	14.2%	487	12.8%	-19.9%	-8.6%
\$25,000 - \$34,999	655	19.1%	573	15.5%	475	12.6%	424	11.1%	-12.5%	-10.7%
\$35,000 - \$49,999	534	15.6%	747	20.2%	714	19.0%	711	18.7%	39.9%	-0.4%
\$50,000 - \$74,999	234	6.8%	634	17.1%	769	20.4%	788	20.7%	170.9%	2.5%
\$75,000 - \$99,999	41	1.2%	218	5.9%	366	9.7%	421	11.1%	431.7%	15.0%
\$100,000 - \$149,999	8	0.2%	95	2.6%	255	6.8%	316	8.3%	1,087.5%	23.9%
\$150,000 +	20	0.6%	47	1.3%	148	3.9%	176	4.6%	135.0%	18.9%
Average Hhld Income	\$26,159		\$41,233		\$53,817		\$56,550		57.6%	5.1%
Median Hhld Income	\$22,995		\$32,990		\$43,072		\$45,713		43.5%	6.1%
Per Capita Income	\$10,601		\$17,223		\$23,754		\$23,145		62.5%	-2.6%

*This Census 2010 data has not yet been released

Current year data is for the year **2011**, 5 year projected data is for the year **2016**. More About Our Data.
Demographic data © 2011 by Experian/Applied Geographic Solutions.

Business List data © 2011 by D&B®. All rights reserved. All D&B information is powered by DUNSRight™, D&B's Quality Process.

Alteryx, DemographicsNow.com and the Alteryx and DemographicsNow.com logos are trademarks of Alteryx, Inc.
All rights reserved.

Privacy Statement | License Agreement