



Date: 05/02/12

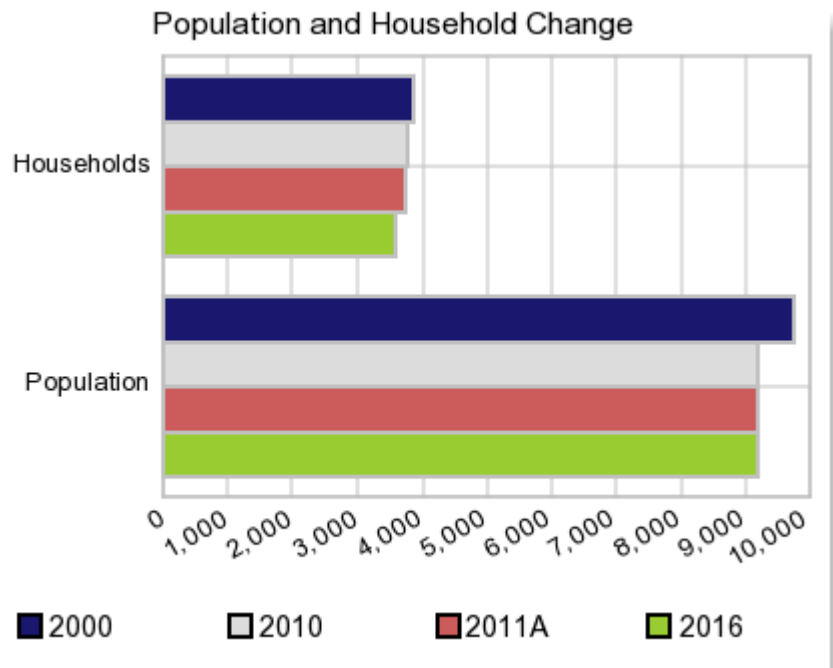
Current Geography Selection: (1 Selected) Counties: Phelps County

Executive Summary Report with Charts

Population Demographics:

The number of households in the study area in 2000 was **3,844** and changed to **3,779** in 2010, representing a change of **-1.7%**. The household count in 2011A was **3,739** and the household projection for 2016 is **3,581**, a change of **-4.2%**.

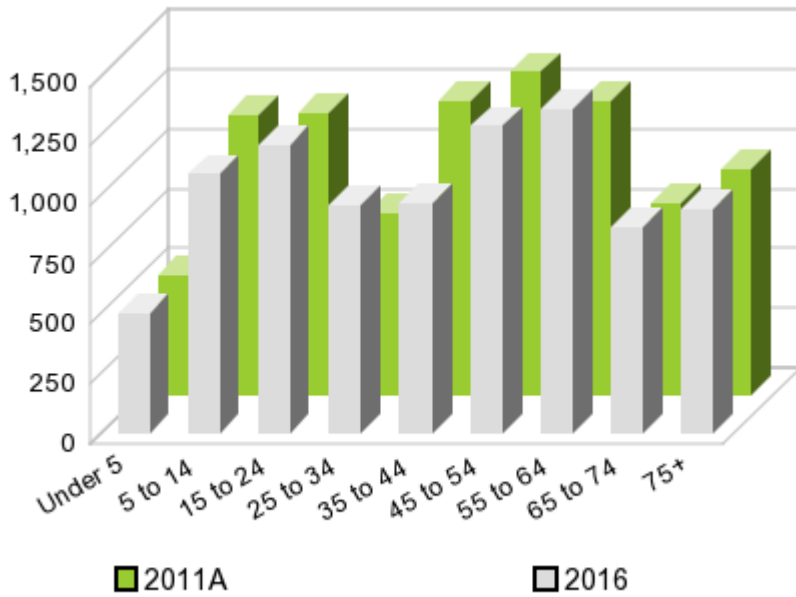
The population in the study area in 2000 was **9,747** and in 2010 it was **9,188**, roughly a **-5.7%** change. The population in 2011A was **9,187** and the projection for 2016 is **9,185** representing a change of **-0.0%**.



	2000 Census	2010 Census	2011A Estimate	2016 Projection	Percent Change	
					2000 to 2010	2011 to 2016
Total Population	9,747	9,188	9,187	9,185	-5.7%	-0.0%
Total Households	3,844	3,779	3,739	3,581	0.3%	-4.2%

Population by Age

Age



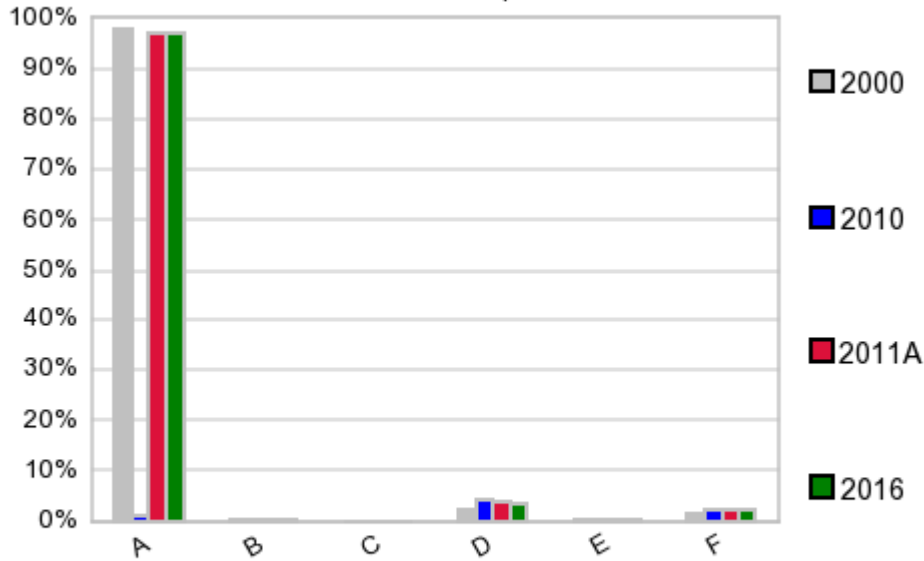
In 1990, the median age of the total population in the study area was **36**, and in 2000, it was **39**. The median age in 2011A is **43** and it is predicted to change in five years to **44** years. In 2011A, females represented **49.0%** of the population with a median age of **45** and males represented **51.0%** of the population with a median age of **41** years. In 2011A, the most prominent age group in this geography is **Age 45 to 54** years. The age group least represented in this geography is **0 to 4** years.

Age Groups*

	1990		2000		2011A		2016		Percent Change	
	Census	%	Census	%	Estimate	%	Projection	%	1990 to 2000	2011 to 2016
0 to 4	705	7.3%	606	6.2%	505	5.5%	503	5.5%	-14.0%	-0.4%
5 to 14	1,532	15.8%	1,491	15.3%	1,174	12.8%	1,085	11.8%	-2.7%	-7.6%
15 to 19	623	6.4%	705	7.2%	608	6.6%	597	6.5%	13.2%	-1.8%
20 to 24	441	4.5%	373	3.8%	572	6.2%	614	6.7%	-15.4%	7.3%
25 to 34	1,412	14.5%	1,043	10.7%	762	8.3%	958	10.4%	-26.1%	25.7%
35 to 44	1,369	14.1%	1,468	15.1%	1,233	13.4%	965	10.5%	7.2%	-21.7%
45 to 54	965	9.9%	1,359	13.9%	1,356	14.8%	1,290	14.0%	40.8%	-4.9%
55 to 64	937	9.6%	938	9.6%	1,234	13.4%	1,364	14.9%	0.1%	10.5%
65 to 74	805	8.3%	838	8.6%	800	8.7%	870	9.5%	4.1%	8.8%
75 +	926	9.5%	926	9.5%	949	10.3%	943	10.3%	0.0%	-0.6%

Population by Race/Ethnicity

Race and Ethnicity Percent Composition



In 2011A, the predominant race/ethnicity category in this study area is **White**. The race & ethnicity category least represented in this geography is **Black**.

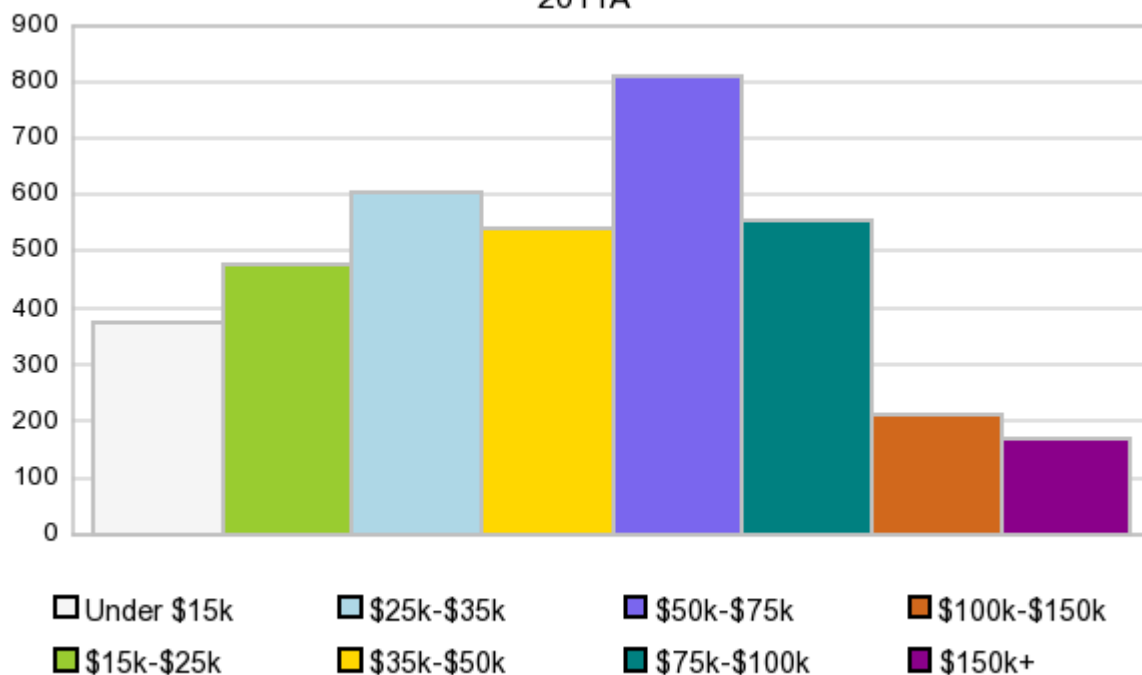
A: White
 B: Asian Pac Islr
 C: Black
 D: Hispanic
 E: Amer Indian or Alaska Native
 F: Other or Multi Race

Race & Ethnicity	2000		2010		2011A		2016		Percent Change	
	Census	%	Census	%	Estimate	%	Projection	%	2000 to 2010	2011 to 2016
White	9,532	97.8%	8,899	96.9%	8,898	96.9%	8,893	96.8%	-6.6%	-0.1%
Black	11	0.1%	13	0.1%	14	0.2%	14	0.2%	18.2%	0.0%
American Indian or Alaska Native	27	0.3%	35	0.4%	35	0.4%	36	0.4%	29.6%	2.9%
Asian/Hawaiian/PI	27	0.3%	25	0.3%	25	0.3%	25	0.3%	-7.4%	0.0%
Some Other Race	77	0.8%	127	1.4%	94	1.0%	96	1.1%	64.9%	2.1%
Two or More Races	73	0.8%	89	1.0%	120	1.3%	119	1.3%	21.9%	-0.8%
Hispanic Ethnicity	220	2.3%	373	4.1%	361	3.9%	317	3.5%	69.5%	-12.2%
Not Hispanic or Latino	9,527	97.7%	8,815	95.9%	8,827	96.1%	8,867	96.5%	-7.5%	0.5%

Households by Income

Households by Income Group 2011A

In 2011A the predominant household income category in this study area is **\$50K - \$75K**, and the income group that is least represented in this geography is **\$150K +**.



HH Income Categories*

	1990 Census		2000 Census		2011A Estimate		2016 Projection		Percent Change	
		%		%		%		%	1990 to 2000	2011 to 2016
\$0 - \$15,000	851	22.6%	628	16.3%	376	10.1%	282	7.9%	-26.2%	-25.0%
\$15,000 - \$24,999	837	22.2%	514	13.4%	476	12.7%	418	11.7%	-38.6%	-12.2%
\$25,000 - \$34,999	863	22.9%	639	16.6%	605	16.2%	569	15.9%	-26.0%	-6.0%
\$35,000 - \$49,999	666	17.7%	797	20.7%	541	14.5%	461	12.9%	19.7%	-14.8%
\$50,000 - \$74,999	362	9.6%	767	20.0%	810	21.7%	808	22.6%	111.9%	-0.2%
\$75,000 - \$99,999	89	2.4%	226	5.9%	553	14.8%	648	18.1%	153.9%	17.2%
\$100,000 - \$149,999	72	1.9%	186	4.8%	212	5.7%	222	6.2%	158.3%	4.7%
\$150,000 +	34	0.9%	87	2.3%	167	4.5%	175	4.9%	155.9%	4.8%
Average Hhld Income	\$31,790		\$47,294		\$57,737		\$65,247		48.8%	13.0%
Median Hhld Income	\$26,655		\$37,499		\$45,791		\$52,105		40.7%	13.8%
Per Capita Income	\$12,668		\$18,652		\$23,933		\$25,944		47.2%	8.4%

*This Census 2010 data has not yet been released

Current year data is for the year **2011**, 5 year projected data is for the year **2016**. More About Our Data.
Demographic data ' 2011 by Experian/Applied Geographic Solutions.

Business List data ' 2011 by D&B^{fi}. All rights reserved. All D&B information is powered by DUNSRightTM, D&B's Quality Process.

' 2011. DDR is brought to you by Alteryx, Inc.

Alteryx, DemographicsNow.com and the Alteryx and DemographicsNow.com logos are trademarks of Alteryx, Inc. All rights reserved.

Privacy Statement | License Agreement