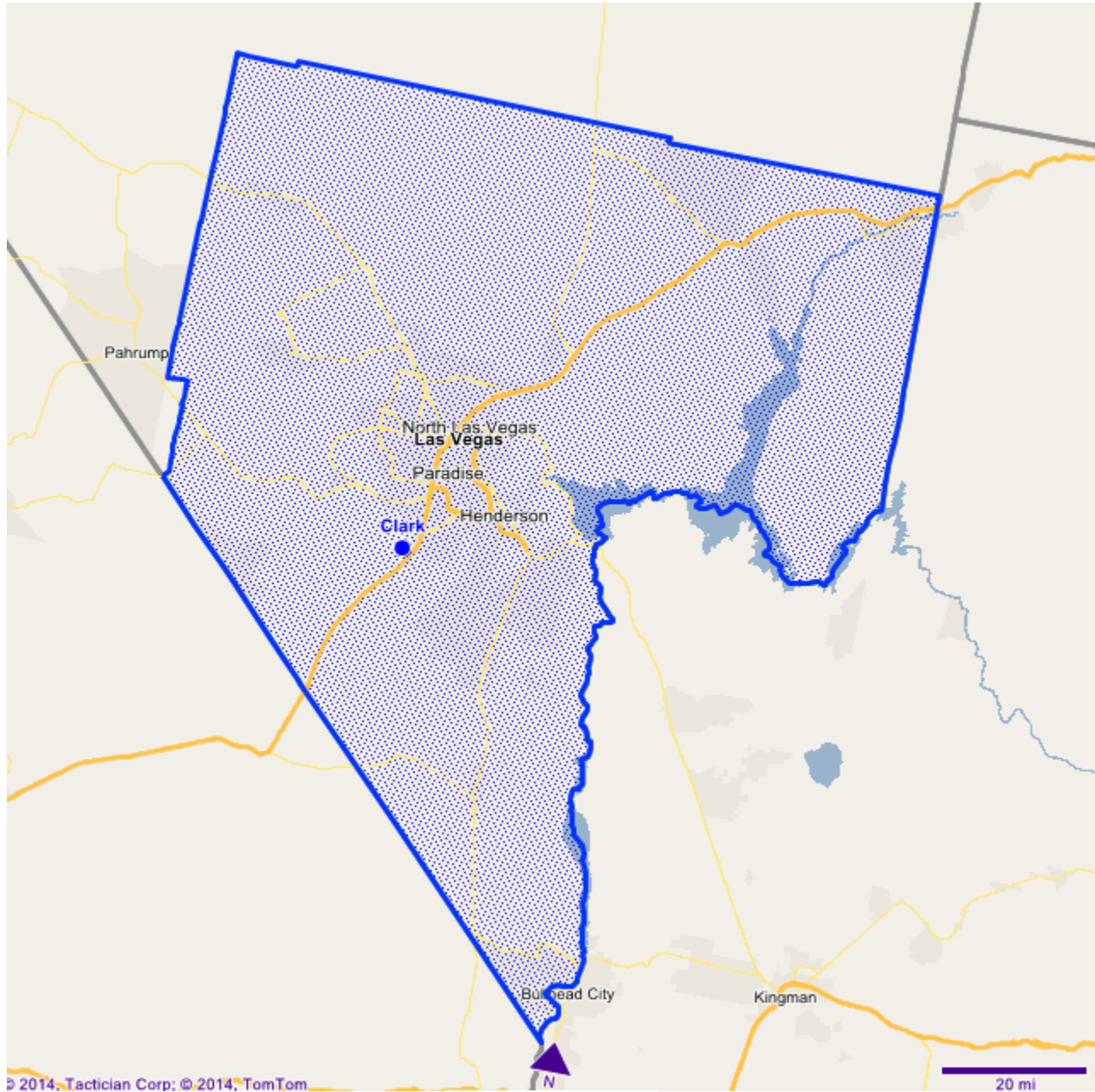


Clark



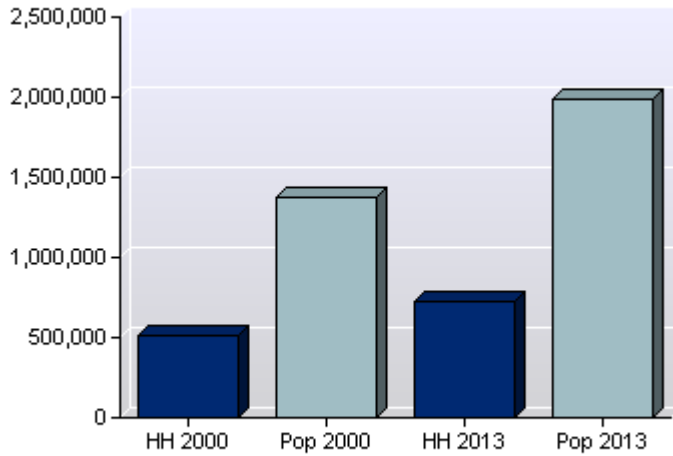
Overlays

- Major Highway
- Highway
- State Boundary



POPULATION

Households and Population

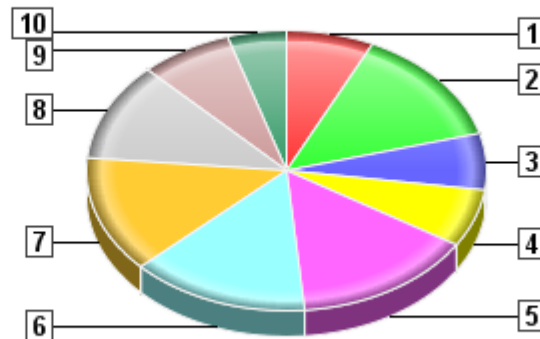


► The population in this area is estimated to change from 1,375,684 to 1,988,666, resulting in an increase of 44.6% between 2000 and the current year. Over the next five years, the population is projected to grow by 4.7%

The population in the United States is estimated to change from 281,399,034 to 314,419,291, resulting in a growth of 11.7% between 2000 and the current year. Over the next 5 years, the population is projected to grow by 4.5%.

Population by Age

| | |
|------------|--------|
| 1. Under 5 | 7.08% |
| 2. 5 to 14 | 13.65% |
| 3. 15-19 | 6.51% |
| 4. 20-24 | 6.66% |
| 5. 25-34 | 14.67% |
| 6. 35-44 | 14.40% |
| 7. 45-54 | 13.48% |
| 8. 55-64 | 11.33% |
| 9. 65-74 | 7.44% |
| 10. 75+ | 4.79% |



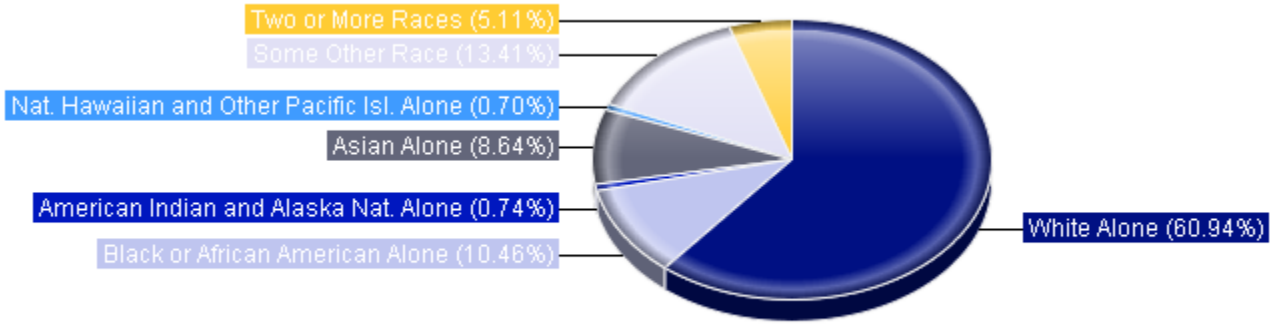
Total Population

| | Number | Percent |
|--------------|------------------|-------------|
| Age 0-4 | 140,805 | 7.08% |
| Age 5-14 | 271,361 | 13.65% |
| Age 15-19 | 129,458 | 6.51% |
| Age 20-24 | 132,433 | 6.66% |
| Age 25-34 | 291,644 | 14.67% |
| Age 35-44 | 286,283 | 14.40% |
| Age 45-54 | 268,019 | 13.48% |
| Age 55-64 | 225,396 | 11.33% |
| Age 65-74 | 148,056 | 7.44% |
| Age 75+ | 95,211 | 4.79% |
| Total | 1,988,666 | 100% |

►The current year median age for this population is 36.0, while the average age is 36.4. Five years from now, the median age is projected to be 37.3.

The current year median age for the United States is 36.5, while the average age is 37.7. Five years from now, the median age is projected to be 37.2.

Population by Race and Ethnicity



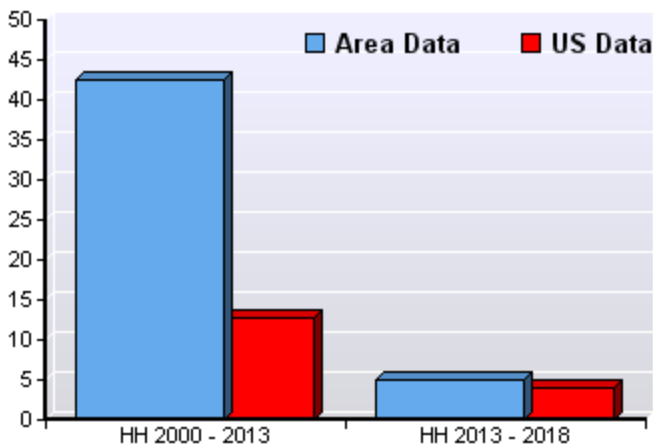
►Of this area's current year estimated population:

60.9% are White Alone, 10.5% are Black or African American Alone, 0.7% are American Indian and Alaska Nat. Alone, 8.6% are Asian Alone, 0.7% are Nat. Hawaiian and Other Pacific Isl. Alone, 13.4% are Some Other Race, and 5.1% are Two or More Races

For the entire United States:

72.4% are White Alone, 12.6% are Black or African American Alone, 1.0% are American Indian and Alaska Nat. Alone, 4.8% are Asian Alone, 0.2% are Nat. Hawaiian and Other Pacific Isl. Alone, 6.2% are Some Other Race, and 2.9% are Two or More Races.

►This area's current estimated Hispanic or Latino population is 30.2%, while the United States current estimated Hispanic or Latino population is 17.1%.



HOUSEHOLDS Historical Growth Rate

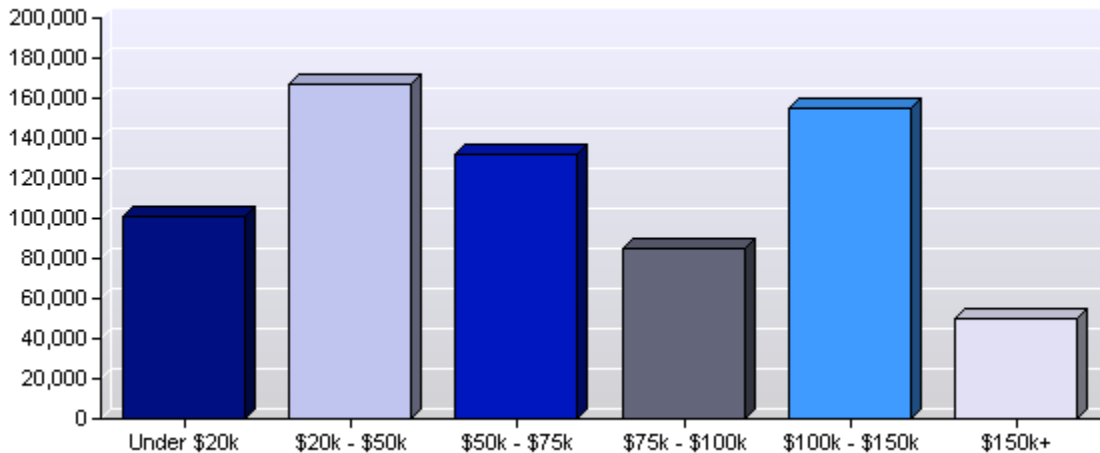
►The number of households in this area is estimated to change from 512,221 to 729,454, resulting in an increase of 42.4% between 2000 and the current year. Over the next five years, the number of households is projected to increase by 4.9%

The number of households in the United States is estimated to change from 105,471,527 to 118,845,620, resulting in a growth of 12.7% between 2000 and the current year. Over the next five years, the number of households is projected to increase by 4.1%.



INCOME

Household Income



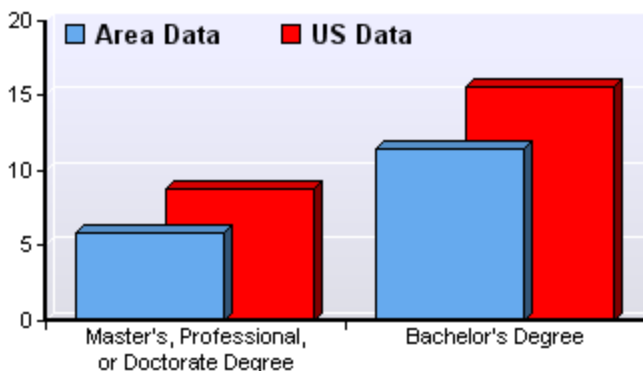
► The average household income is estimated to be \$68,906 for the current year, while the average household income for the United States is estimated to be \$70,968 for the same time frame. The average household income in this area is projected to increase 4.1% over the next five years, from \$68,906 to \$71,765. The United States is projected to have a 4.8% increase in average household income.

► The current year estimated per capita income for this area is \$25,530, compared to an estimate of \$27,068 for the United States as a whole.



EDUCATION

Higher Education Achievement Rates



► Currently, it is estimated that 5.9% of the population age 25 and over in this area had earned a Master's, Professional, or Doctorate Degree and 11.5% had earned a Bachelor's Degree.

In comparison, for the United States, it is estimated that for the population over age 25, 8.9% had earned a Master's, Professional, or Doctorate Degree, while 15.5% had earned a

Bachelor's Degree.