



Date: 04/16/12

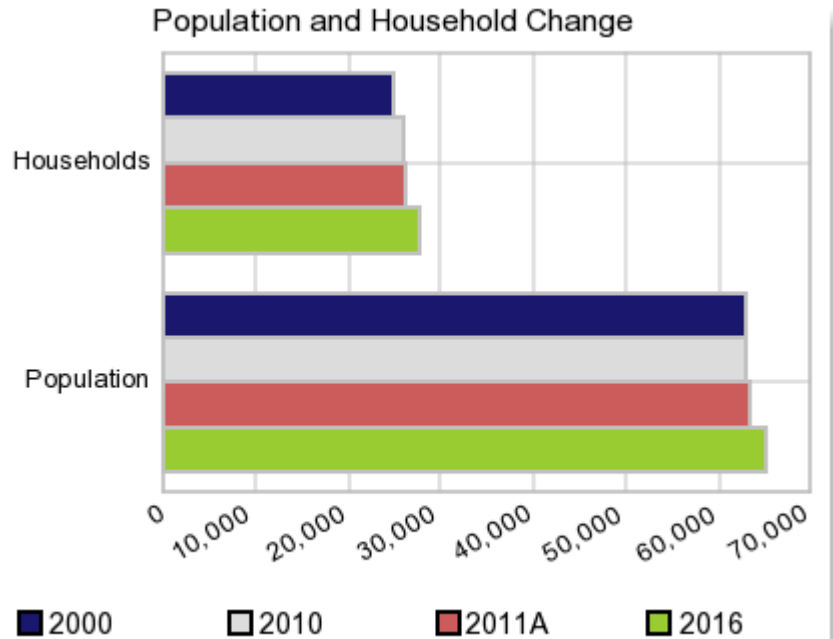
Current Geography Selection: (1 Selected) Counties: Columbia County

## Executive Summary Report with Charts

### Population Demographics:

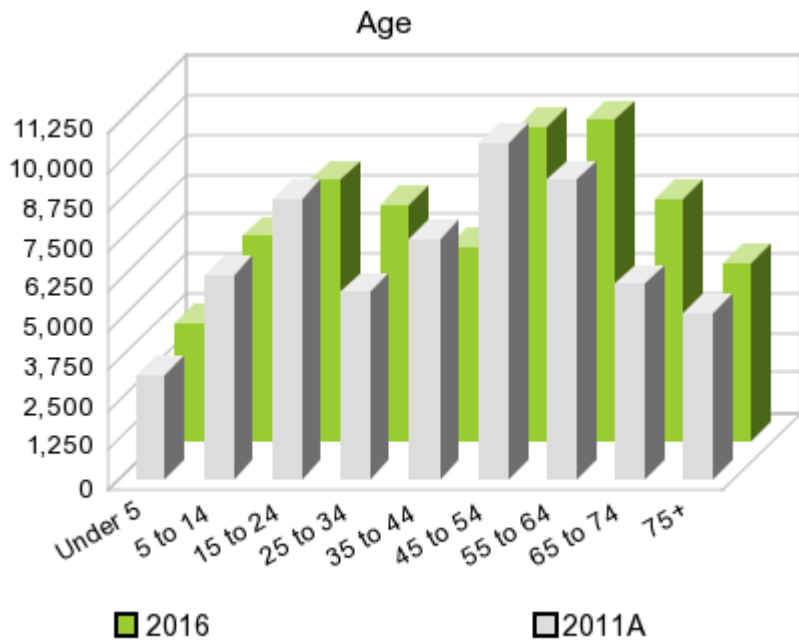
The number of households in the study area in 2000 was **24,796** and changed to **25,906** in 2010, representing a change of **4.5%**. The household count in 2011A was **26,233** and the household projection for 2016 is **27,536**, a change of **5.0%**.

The population in the study area in 2000 was **63,094** and in 2010 it was **63,096**, roughly a **0.0%** change. The population in 2011A was **63,490** and the projection for 2016 is **65,051** representing a change of **2.5%**.



	2000 Census	2010 Census	2011A Estimate	2016 Projection	Percent Change	
					2000 to 2010	2011 to 2016
Total Population	63,094	63,096	63,490	65,051	0.0%	2.5%
Total Households	24,796	25,906	26,233	27,536	9.3%	5.0%

### Population by Age



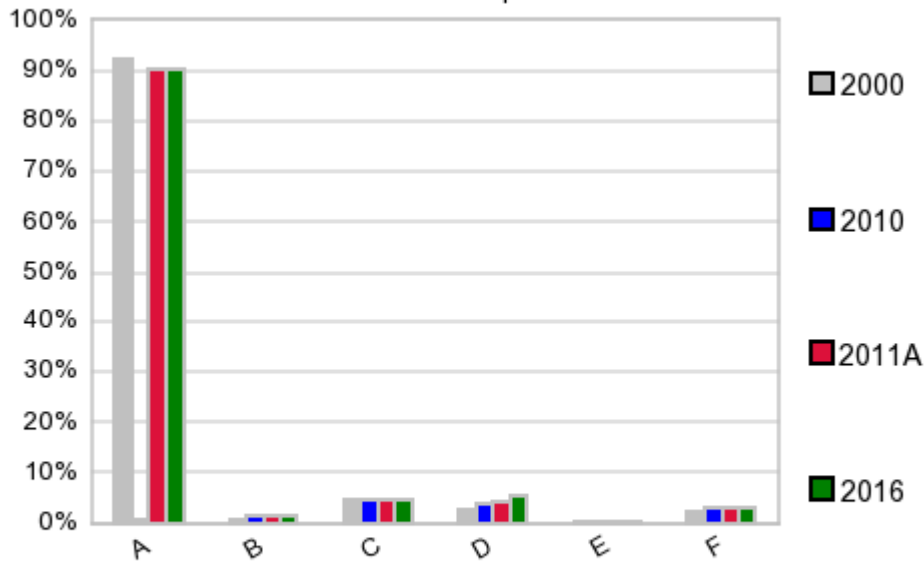
In 1990, the median age of the total population in the study area was **37**, and in 2000, it was **40**. The median age in 2011A is **45** and it is predicted to change in five years to **46** years. In 2011A, females represented **49.2%** of the population with a median age of **46** and males represented **50.8%** of the population with a median age of **43** years. In 2011A, the most prominent age group in this geography is **Age 45 to 54** years. The age group least represented in this geography is **0 to 4** years.

#### Age Groups\*

	1990		2000		2011A		2016		Percent Change	
	Census	%	Census	%	Estimate	%	Projection	%	1990 to 2000	2011 to 2016
0 to 4	4,418	7.0%	3,357	5.3%	3,274	5.2%	3,738	5.8%	-24.0%	14.2%
5 to 14	8,391	13.3%	8,871	14.1%	6,472	10.2%	6,471	9.9%	5.7%	-0.0%
15 to 19	4,170	6.6%	4,361	6.9%	4,629	7.3%	3,477	5.4%	4.6%	-24.9%
20 to 24	3,692	5.9%	2,622	4.2%	4,211	6.6%	4,725	7.3%	-29.0%	12.2%
25 to 34	9,318	14.8%	6,979	11.1%	5,889	9.3%	7,402	11.4%	-25.1%	25.7%
35 to 44	9,802	15.6%	9,969	15.8%	7,569	11.9%	6,072	9.3%	1.7%	-19.8%
45 to 54	6,979	11.1%	9,657	15.3%	10,599	16.7%	9,843	15.1%	38.4%	-7.1%
55 to 64	5,898	9.4%	6,925	11.0%	9,451	14.9%	10,121	15.6%	17.4%	7.1%
65 to 74	5,671	9.0%	5,264	8.3%	6,128	9.7%	7,601	11.7%	-7.2%	24.0%
75 +	4,643	7.4%	5,089	8.1%	5,243	8.3%	5,577	8.6%	9.6%	6.4%

#### Population by Race/Ethnicity

### Race and Ethnicity Percent Composition



In 2011A, the predominant race/ethnicity category in this study area is **White**. The race & ethnicity category least represented in this geography is **American Indian, Alaska Native**.

A: White  
 B: Asian Pac Islr  
 C: Black  
 D: Hispanic  
 E: Amer Indian or Alaska Native  
 F: Other or Multi Race

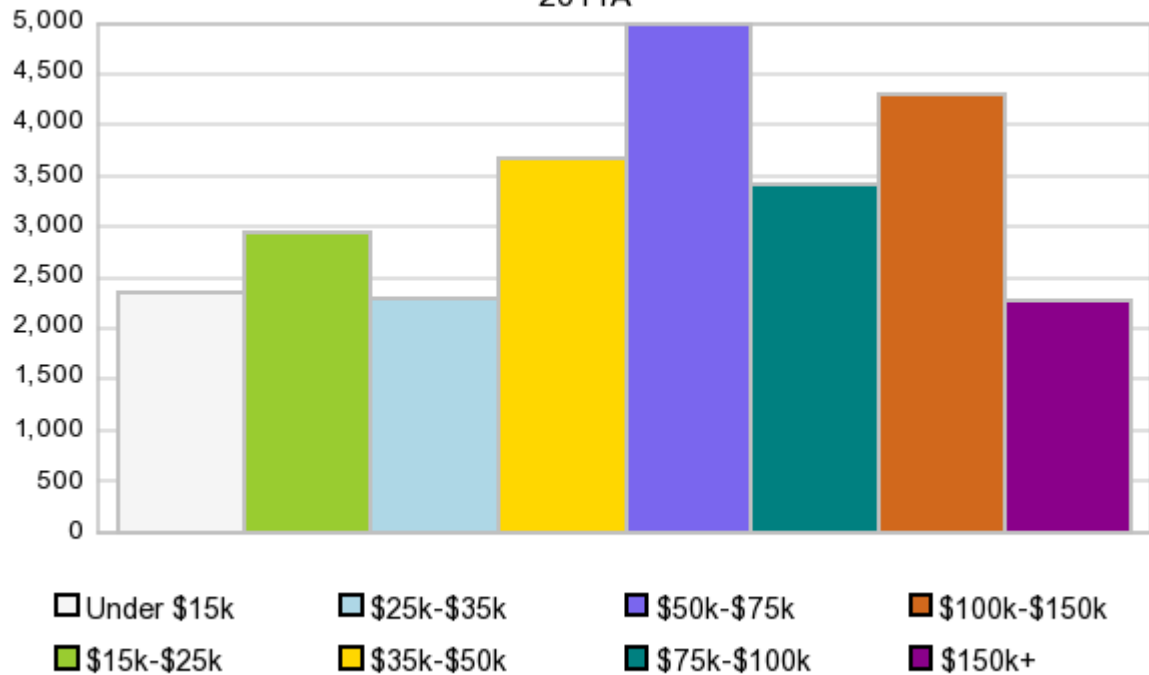
### Race & Ethnicity

	2000		2010		2011A		2016		Percent Change	
	Census	%	Census	%	Estimate	%	Projection	%	2000 to 2010	2011 to 2016
White	58,105	92.1%	57,136	90.6%	57,456	90.5%	58,721	90.3%	-1.7%	2.2%
Black	2,850	4.5%	2,855	4.5%	2,889	4.6%	3,023	4.7%	0.2%	4.6%
American Indian or Alaska Native	132	0.2%	123	0.2%	125	0.2%	130	0.2%	-6.8%	4.0%
Asian/Hawaiian/PI	527	0.8%	1,020	1.6%	1,036	1.6%	1,099	1.7%	93.5%	6.1%
Some Other Race	568	0.9%	683	1.1%	653	1.0%	682	1.1%	20.2%	4.4%
Two or More Races	912	1.5%	1,279	2.0%	1,331	2.1%	1,397	2.2%	40.2%	5.0%
Hispanic Ethnicity	1,598	2.5%	2,454	3.9%	2,678	4.2%	3,571	5.5%	53.6%	33.3%
Not Hispanic or Latino	61,496	97.5%	60,642	96.1%	60,811	95.8%	61,480	94.5%	-1.4%	1.1%

### Households by Income

### Households by Income Group 2011A

In 2011A the predominant household income category in this study area is **\$50K - \$75K**, and the income group that is least represented in this geography is **\$150K +**.



#### HH Income Categories\*

	1990 Census		2000 Census		2011A Estimate		2016 Projection		Percent Change	
		%		%		%		%	1990 to 2000	2011 to 2016
\$0 - \$15,000	5,653	23.9%	3,413	13.8%	2,356	9.0%	2,089	7.6%	-39.6%	-11.3%
\$15,000 - \$24,999	4,246	17.9%	3,310	13.3%	2,948	11.2%	2,891	10.5%	-22.0%	-1.9%
\$25,000 - \$34,999	3,948	16.7%	3,497	14.1%	2,295	8.7%	1,964	7.1%	-11.4%	-14.4%
\$35,000 - \$49,999	4,538	19.2%	4,389	17.7%	3,671	14.0%	3,414	12.4%	-3.3%	-7.0%
\$50,000 - \$74,999	3,376	14.2%	5,215	21.0%	4,979	19.0%	4,893	17.8%	54.5%	-1.7%
\$75,000 - \$99,999	1,048	4.4%	2,360	9.5%	3,420	13.0%	3,929	14.3%	125.2%	14.9%
\$100,000 - \$149,999	563	2.4%	1,588	6.4%	4,289	16.4%	5,549	20.2%	182.1%	29.4%
\$150,000 +	303	1.3%	1,024	4.1%	2,274	8.7%	2,806	10.2%	238.0%	23.4%
Average Hhld Income	\$36,762		\$55,438		\$80,433		\$91,788		50.8%	14.1%
Median Hhld Income	\$29,830		\$42,021		\$58,335		\$65,753		40.9%	12.7%
Per Capita Income	\$14,016		\$21,787		\$34,824		\$40,495		55.4%	16.3%

\*This Census 2010 data has not yet been released

Current year data is for the year **2011**, 5 year projected data is for the year **2016**. More About Our Data.  
Demographic data © 2011 by Experian/Applied Geographic Solutions.

Business List data © 2011 by D&B®. All rights reserved. All D&B information is powered by DUNSRight™, D&B's Quality Process.

Alteryx, DemographicsNow.com and the Alteryx and DemographicsNow.com logos are trademarks of Alteryx, Inc.  
All rights reserved.

Privacy Statement | License Agreement