



Date: 04/16/12

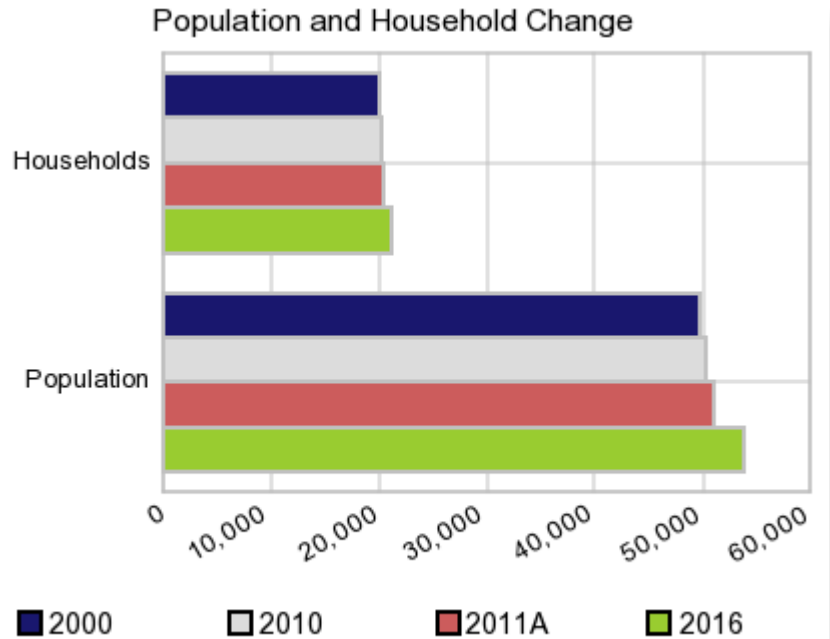
Current Geography Selection: (1 Selected) Counties: Montgomery County

Executive Summary Report with Charts

Population Demographics:

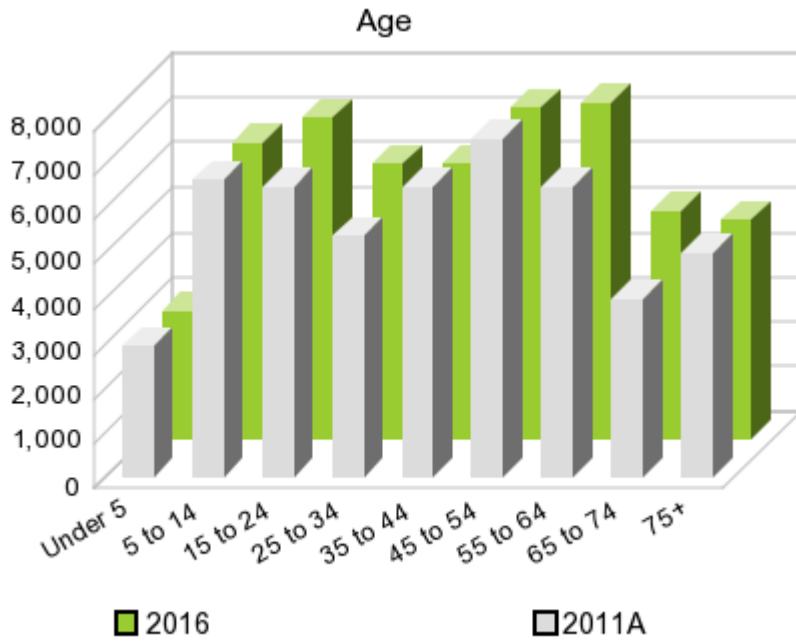
The number of households in the study area in 2000 was **20,038** and changed to **20,272** in 2010, representing a change of **1.2%**. The household count in 2011A was **20,449** and the household projection for 2016 is **21,157**, a change of **3.5%**.

The population in the study area in 2000 was **49,708** and in 2010 it was **50,219**, roughly a **1.0%** change. The population in 2011A was **50,944** and the projection for 2016 is **53,822** representing a change of **5.7%**.



	2000 Census	2010 Census	2011A Estimate	2016 Projection	Percent Change	
					2000 to 2010	2011 to 2016
Total Population	49,708	50,219	50,944	53,822	1.0%	5.7%
Total Households	20,038	20,272	20,449	21,157	0.4%	3.5%

Population by Age



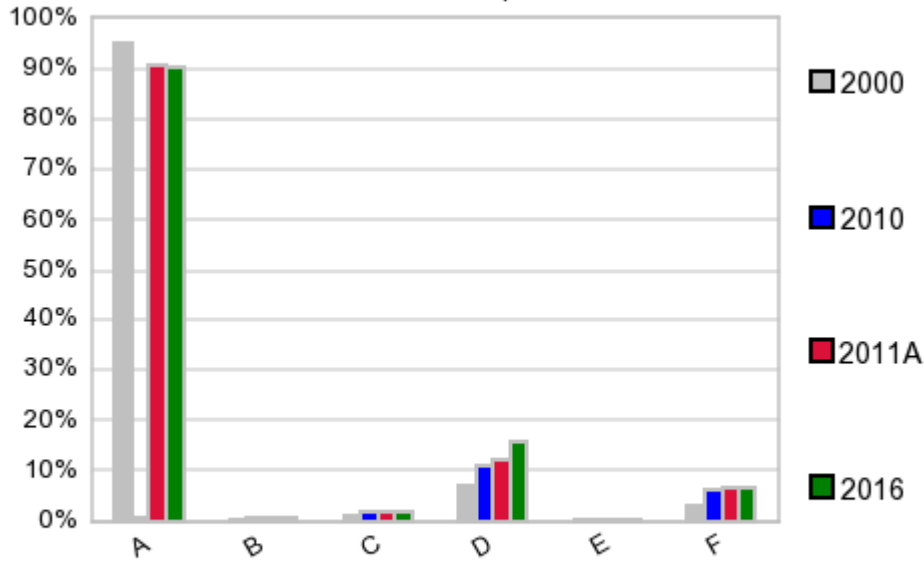
In 1990, the median age of the total population in the study area was **37**, and in 2000, it was **40**. The median age in 2011A is **41** and it is predicted to change in five years to **42** years. In 2011A, females represented **51.7%** of the population with a median age of **43** and males represented **48.3%** of the population with a median age of **40** years. In 2011A, the most prominent age group in this geography is **Age 45 to 54** years. The age group least represented in this geography is **0 to 4** years.

Age Groups*

	1990		2000		2011A		2016		Percent Change	
	Census	%	Census	%	Estimate	%	Projection	%	1990 to 2000	2011 to 2016
0 to 4	3,599	6.9%	2,940	5.9%	2,935	5.8%	2,855	5.3%	-18.3%	-2.7%
5 to 14	7,163	13.8%	7,016	14.1%	6,651	13.1%	6,596	12.3%	-2.1%	-0.8%
15 to 19	3,378	6.5%	3,341	6.7%	3,421	6.7%	3,583	6.7%	-1.1%	4.7%
20 to 24	3,131	6.0%	2,438	4.9%	3,062	6.0%	3,607	6.7%	-22.1%	17.8%
25 to 34	7,507	14.4%	5,786	11.6%	5,397	10.6%	6,119	11.4%	-22.9%	13.4%
35 to 44	7,248	13.9%	7,287	14.7%	6,484	12.7%	6,154	11.4%	0.5%	-5.1%
45 to 54	4,841	9.3%	6,878	13.8%	7,548	14.8%	7,413	13.8%	42.1%	-1.8%
55 to 64	5,014	9.6%	4,485	9.0%	6,484	12.7%	7,538	14.0%	-10.6%	16.3%
65 to 74	5,611	10.8%	4,222	8.5%	3,962	7.8%	5,092	9.5%	-24.8%	28.5%
75 +	4,489	8.6%	5,315	10.7%	5,006	9.8%	4,865	9.0%	18.4%	-2.8%

Population by Race/Ethnicity

Race and Ethnicity Percent Composition



In 2011A, the predominant race/ethnicity category in this study area is **White**. The race & ethnicity category least represented in this geography is **American Indian, Alaska Native**.

A: White
 B: Asian Pac Islr
 C: Black
 D: Hispanic
 E: Amer Indian or Alaska Native
 F: Other or Multi Race

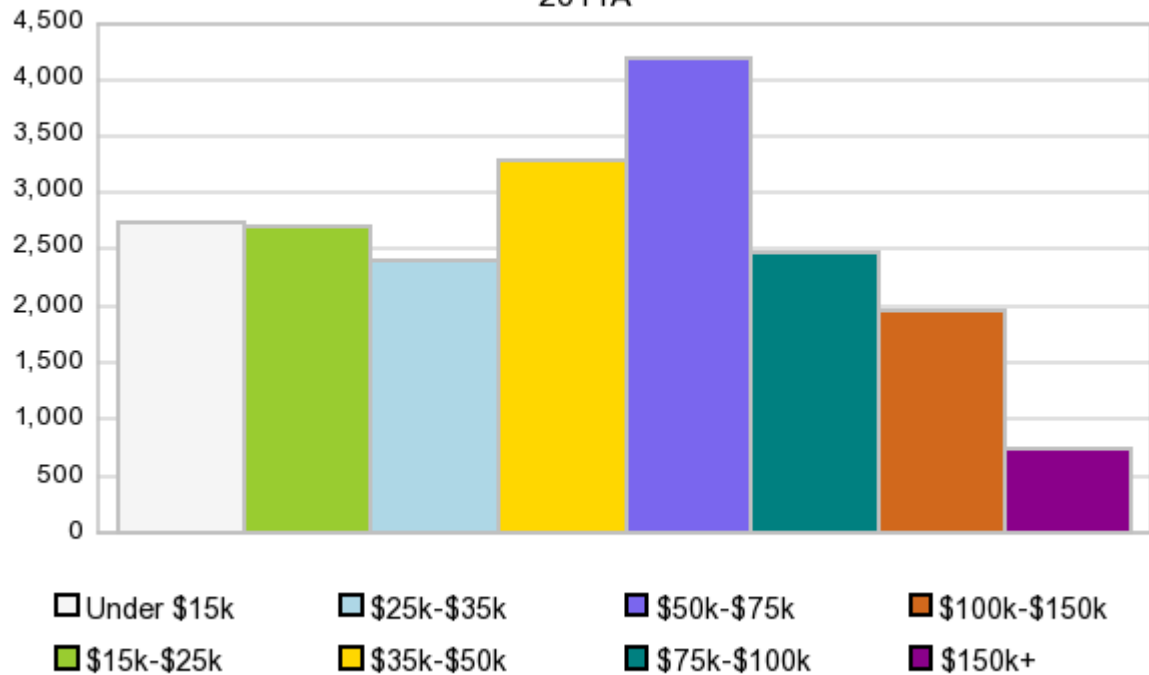
Race & Ethnicity

	2000		2010		2011A		2016		Percent Change	
	Census	%	Census	%	Estimate	%	Projection	%	2000 to 2010	2011 to 2016
White	47,160	94.9%	45,519	90.6%	46,148	90.6%	48,631	90.4%	-3.5%	5.4%
Black	572	1.2%	951	1.9%	975	1.9%	1,070	2.0%	66.3%	9.7%
American Indian or Alaska Native	124	0.3%	169	0.3%	171	0.3%	183	0.3%	36.3%	7.0%
Asian/Hawaiian/PI	269	0.5%	388	0.8%	399	0.8%	445	0.8%	44.2%	11.5%
Some Other Race	952	1.9%	2,211	4.4%	1,983	3.9%	2,146	4.0%	132.2%	8.2%
Two or More Races	631	1.3%	981	2.0%	1,269	2.5%	1,347	2.5%	55.5%	6.1%
Hispanic Ethnicity	3,433	6.9%	5,654	11.3%	6,246	12.3%	8,608	16.0%	64.7%	37.8%
Not Hispanic or Latino	46,275	93.1%	44,565	88.7%	44,698	87.7%	45,215	84.0%	-3.7%	1.2%

Households by Income

Households by Income Group 2011A

In 2011A the predominant household income category in this study area is **\$50K - \$75K**, and the income group that is least represented in this geography is **\$150K +**.



HH Income Categories*

	1990 Census		2000 Census		2011A Estimate		2016 Projection		Percent Change	
		%		%		%		%	1990 to 2000	2011 to 2016
\$0 - \$15,000	5,961	29.5%	4,096	20.4%	2,732	13.4%	2,367	11.2%	-31.3%	-13.4%
\$15,000 - \$24,999	4,490	22.2%	3,522	17.6%	2,689	13.2%	2,445	11.6%	-21.6%	-9.1%
\$25,000 - \$34,999	3,610	17.9%	3,142	15.7%	2,396	11.7%	2,198	10.4%	-13.0%	-8.3%
\$35,000 - \$49,999	3,422	17.0%	3,406	17.0%	3,278	16.0%	3,275	15.5%	-0.5%	-0.1%
\$50,000 - \$74,999	1,993	9.9%	3,506	17.5%	4,188	20.5%	4,483	21.2%	75.9%	7.0%
\$75,000 - \$99,999	434	2.2%	1,316	6.6%	2,470	12.1%	2,985	14.1%	203.2%	20.9%
\$100,000 - \$149,999	164	0.8%	762	3.8%	1,964	9.6%	2,475	11.7%	364.6%	26.0%
\$150,000 +	125	0.6%	288	1.4%	737	3.6%	934	4.4%	130.4%	26.7%
Average Hhld Income	\$29,656		\$41,070		\$57,098		\$64,706		38.5%	13.3%
Median Hhld Income	\$24,100		\$32,311		\$45,534		\$51,556		34.1%	13.2%
Per Capita Income	\$11,658		\$16,556		\$23,526		\$26,103		42.0%	11.0%

*This Census 2010 data has not yet been released

Current year data is for the year **2011**, 5 year projected data is for the year **2016**. More About Our Data.
Demographic data © 2011 by Experian/Applied Geographic Solutions.

Business List data © 2011 by D&B®. All rights reserved. All D&B information is powered by DUNSRight™, D&B's Quality Process.

Alteryx, DemographicsNow.com and the Alteryx and DemographicsNow.com logos are trademarks of Alteryx, Inc.
All rights reserved.

Privacy Statement | License Agreement