



Date: 04/16/12

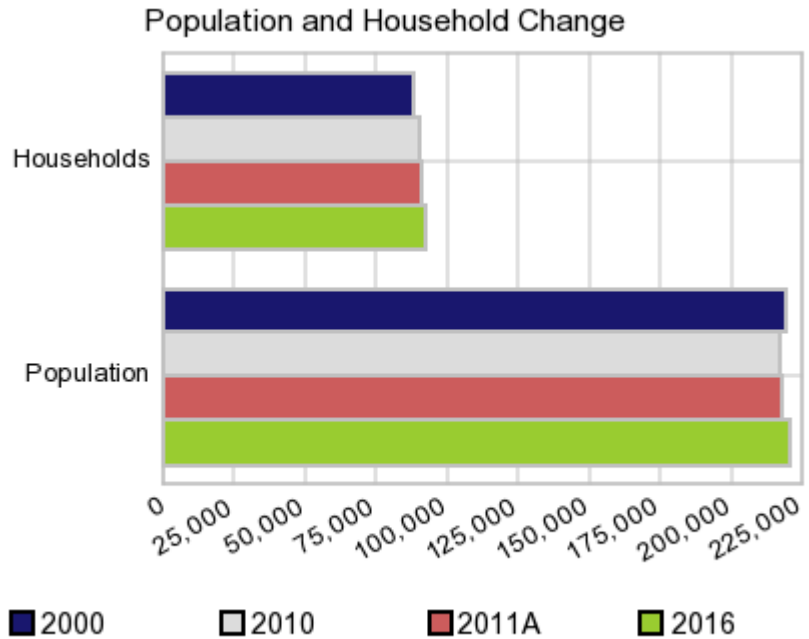
Current Geography Selection: (1 Selected) Counties: Niagara County

## Executive Summary Report with Charts

### Population Demographics:

The number of households in the study area in 2000 was **87,846** and changed to **90,556** in 2010, representing a change of **3.1%**. The household count in 2011A was **90,982** and the household projection for 2016 is **92,693**, a change of **1.9%**.

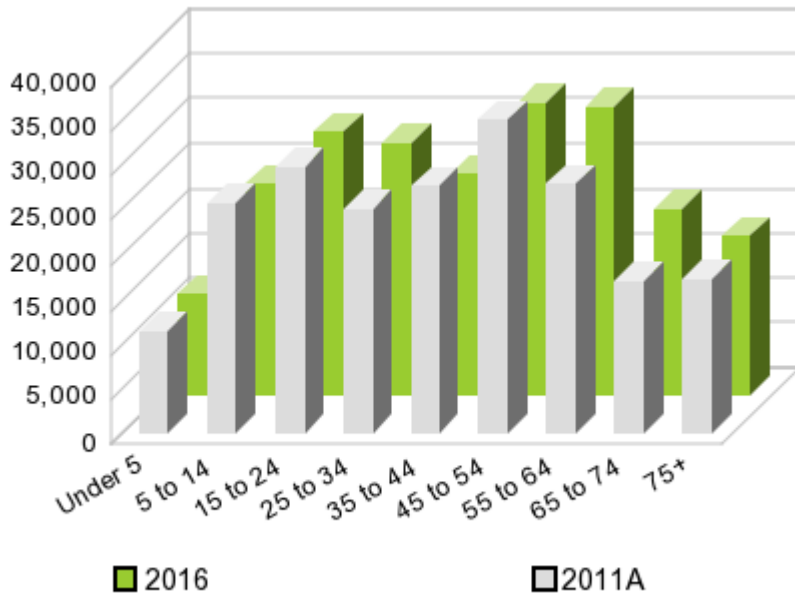
The population in the study area in 2000 was **219,846** and in 2010 it was **216,469**, roughly a **-1.5%** change. The population in 2011A was **217,304** and the projection for 2016 is **220,559** representing a change of **1.5%**.



	2000 Census	2010 Census	2011A Estimate	2016 Projection	Percent Change	
					2000 to 2010	2011 to 2016
Total Population	219,846	216,469	217,304	220,559	-1.5%	1.5%
Total Households	87,846	90,556	90,982	92,693	6.8%	1.9%

### Population by Age

### Age



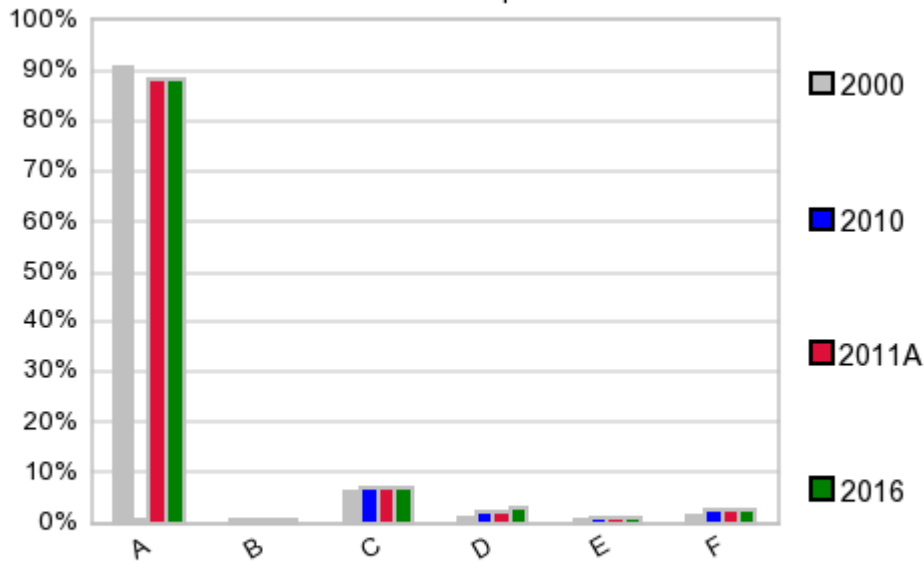
In 1990, the median age of the total population in the study area was **35**, and in 2000, it was **38**. The median age in 2011A is **41** and it is predicted to change in five years to **42** years. In 2011A, females represented **51.5%** of the population with a median age of **43** and males represented **48.5%** of the population with a median age of **40** years. In 2011A, the most prominent age group in this geography is **Age 45 to 54** years. The age group least represented in this geography is **0 to 4** years.

### Age Groups\*

	1990 Census		2000 Census		2011A Estimate		2016 Projection		Percent Change	
		%		%		%		%	1990 to 2000	2011 to 2016
0 to 4	15,685	7.1%	13,165	6.0%	11,387	5.2%	11,328	5.1%	-16.1%	-0.5%
5 to 14	30,688	13.9%	31,546	14.4%	25,804	11.9%	23,630	10.7%	2.8%	-8.4%
15 to 19	14,996	6.8%	15,759	7.2%	15,290	7.0%	13,954	6.3%	5.1%	-8.7%
20 to 24	15,104	6.8%	12,347	5.6%	14,470	6.7%	15,431	7.0%	-18.3%	6.6%
25 to 34	35,449	16.1%	26,222	11.9%	25,131	11.6%	28,032	12.7%	-26.0%	11.5%
35 to 44	31,792	14.4%	36,208	16.5%	27,686	12.7%	24,686	11.2%	13.9%	-10.8%
45 to 54	22,098	10.0%	30,755	14.0%	35,129	16.2%	32,626	14.8%	39.2%	-7.1%
55 to 64	21,495	9.7%	19,960	9.1%	27,902	12.8%	32,315	14.7%	-7.1%	15.8%
65 to 74	19,941	9.0%	17,236	7.8%	17,183	7.9%	20,782	9.4%	-13.6%	20.9%
75 +	13,514	6.1%	16,648	7.6%	17,314	8.0%	17,737	8.0%	23.2%	2.4%

### Population by Race/Ethnicity

### Race and Ethnicity Percent Composition



In 2011A, the predominant race/ethnicity category in this study area is **White**.  
The race & ethnicity category least represented in this geography is **Other**.

A: White  
B: Asian Pac Islr  
C: Black  
D: Hispanic  
E: Amer Indian or Alaska Native  
F: Other or Multi Race

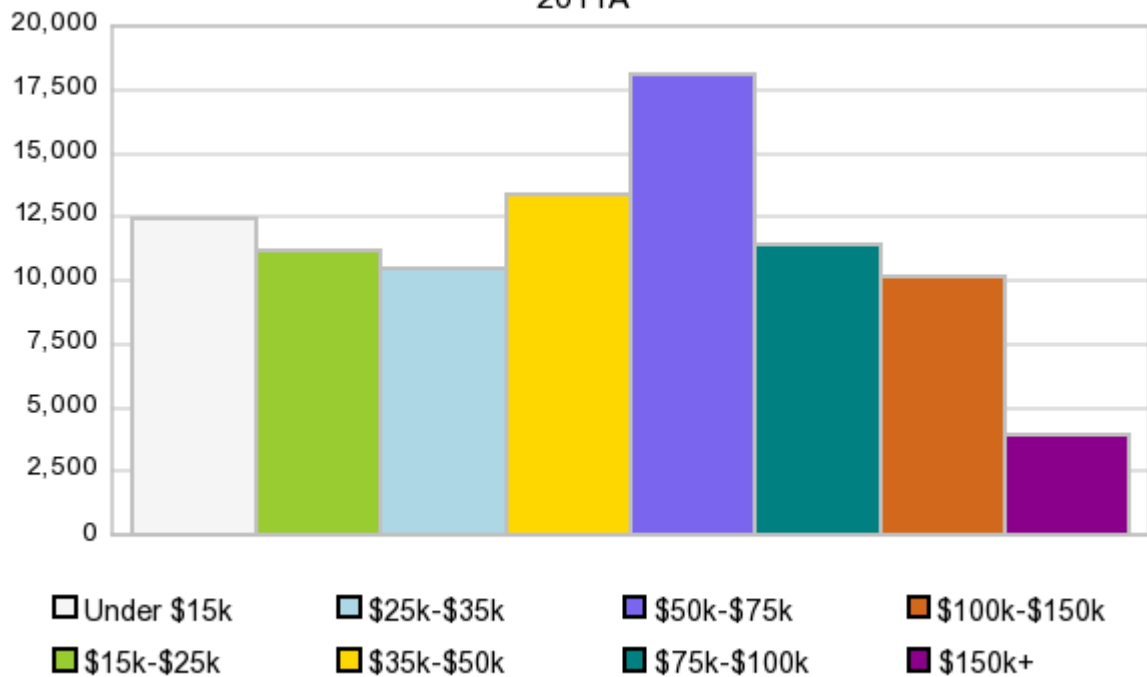
### Race & Ethnicity

	2000		2010		2011A		2016		Percent Change	
	Census	%	Census	%	Estimate	%	Projection	%	2000 to 2010	2011 to 2016
White	199,404	90.7%	191,673	88.5%	192,286	88.5%	194,671	88.3%	-3.9%	1.2%
Black	13,520	6.2%	14,851	6.9%	14,971	6.9%	15,447	7.0%	9.8%	3.2%
American Indian or Alaska Native	2,069	0.9%	2,285	1.1%	2,293	1.1%	2,336	1.1%	10.4%	1.9%
Asian/Hawaiian/PI	1,318	0.6%	1,885	0.9%	1,916	0.9%	2,042	0.9%	43.0%	6.6%
Some Other Race	876	0.4%	1,108	0.5%	1,431	0.7%	1,507	0.7%	26.5%	5.3%
Two or More Races	2,659	1.2%	4,667	2.2%	4,401	2.0%	4,559	2.1%	75.5%	3.6%
Hispanic Ethnicity	2,913	1.3%	4,694	2.2%	5,152	2.4%	6,990	3.2%	61.1%	35.7%
Not Hispanic or Latino	216,933	98.7%	211,775	97.8%	212,149	97.6%	213,570	96.8%	-2.4%	0.7%

### Households by Income

### Households by Income Group 2011A

In 2011A the predominant household income category in this study area is **\$50K - \$75K**, and the income group that is least represented in this geography is **\$150K +**.



#### HH Income Categories\*

	1990 Census		2000 Census		2011A Estimate		2016 Projection		Percent Change	
	Count	%	Count	%	Count	%	Count	%	1990 to 2000	2000 to 2011
\$0 - \$15,000	21,722	25.6%	15,397	17.5%	12,442	13.7%	11,678	12.6%	-29.1%	-6.1%
\$15,000 - \$24,999	15,531	18.3%	12,941	14.7%	11,180	12.3%	10,727	11.6%	-16.7%	-4.1%
\$25,000 - \$34,999	14,890	17.6%	12,170	13.9%	10,450	11.5%	9,855	10.6%	-18.3%	-5.7%
\$35,000 - \$49,999	16,622	19.6%	14,742	16.8%	13,361	14.7%	12,796	13.8%	-11.3%	-4.2%
\$50,000 - \$74,999	11,670	13.8%	17,288	19.7%	18,099	19.9%	18,394	19.8%	48.1%	1.6%
\$75,000 - \$99,999	3,068	3.6%	8,469	9.6%	11,402	12.5%	12,523	13.5%	176.0%	9.8%
\$100,000 - \$149,999	914	1.1%	5,331	6.1%	10,143	11.1%	11,923	12.9%	483.3%	17.5%
\$150,000 +	396	0.5%	1,508	1.7%	3,906	4.3%	4,811	5.2%	280.8%	23.2%
Average Hhld Income	\$32,878		\$47,553		\$59,520		\$64,836		44.6%	8.9%
Median Hhld Income	\$28,507		\$38,308		\$47,543		\$51,552		34.4%	8.4%
Per Capita Income	\$12,722		\$19,001		\$25,647		\$28,081		49.4%	9.5%

\*This Census 2010 data has not yet been released

Current year data is for the year **2011**, 5 year projected data is for the year **2016**. More About Our Data.  
Demographic data © 2011 by Experian/Applied Geographic Solutions.

Business List data © 2011 by D&B®. All rights reserved. All D&B information is powered by DUNSRight™, D&B's Quality Process.

Alteryx, DemographicsNow.com and the Alteryx and DemographicsNow.com logos are trademarks of Alteryx, Inc.  
All rights reserved.

Privacy Statement | License Agreement