



Date: 04/16/12

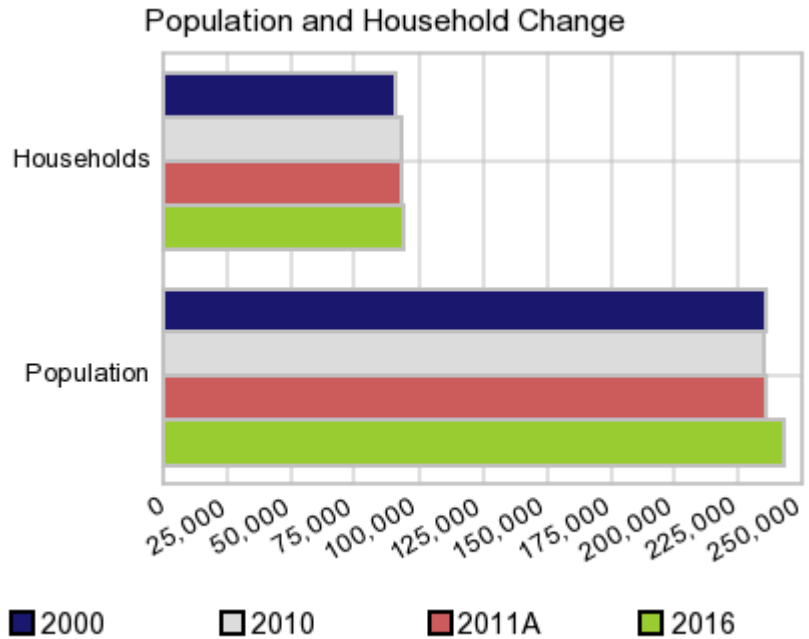
Current Geography Selection: (1 Selected) Counties: Oneida County

## Executive Summary Report with Charts

### Population Demographics:

The number of households in the study area in 2000 was **90,496** and changed to **93,028** in 2010, representing a change of **2.8%**. The household count in 2011A was **93,230** and the household projection for 2016 is **93,964**, a change of **0.8%**.

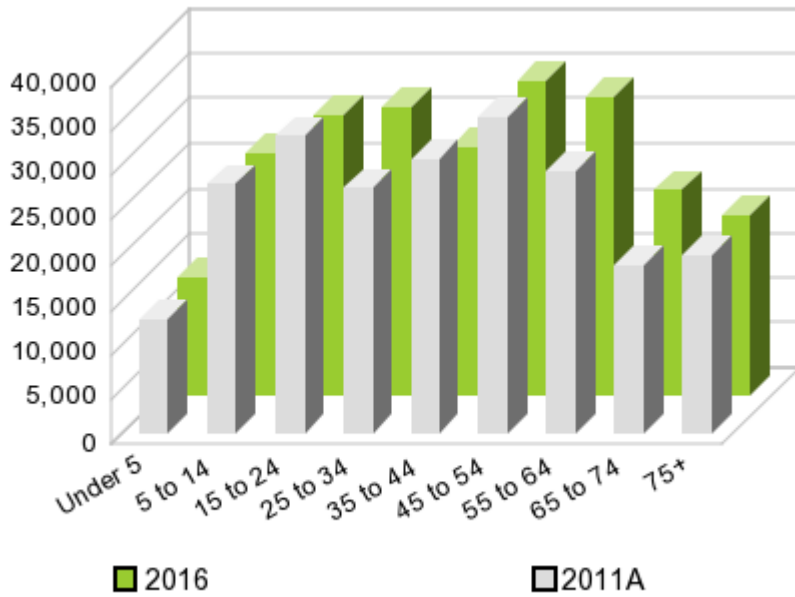
The population in the study area in 2000 was **235,469** and in 2010 it was **234,878**, roughly a **-0.3%** change. The population in 2011A was **235,885** and the projection for 2016 is **242,760** representing a change of **2.9%**.



	2000 Census	2010 Census	2011A Estimate	2016 Projection	Percent Change	
					2000 to 2010	2011 to 2016
Total Population	235,469	234,878	235,885	242,760	-0.3%	2.9%
Total Households	90,496	93,028	93,230	93,964	0.5%	0.8%

### Population by Age

### Age



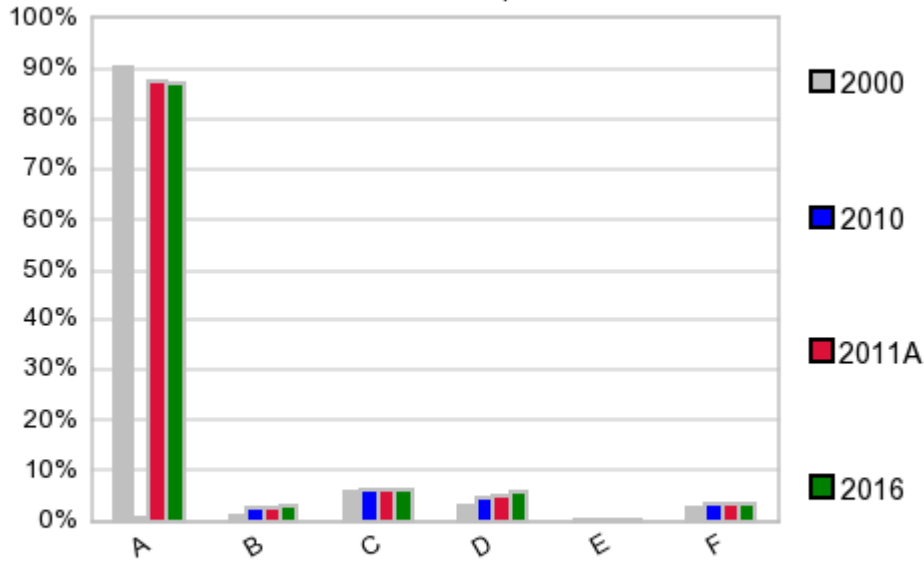
In 1990, the median age of the total population in the study area was **34**, and in 2000, it was **38**. The median age in 2011A is **41** and it is predicted to change in five years to **42** years. In 2011A, females represented **50.0%** of the population with a median age of **43** and males represented **50.0%** of the population with a median age of **39** years. In 2011A, the most prominent age group in this geography is **Age 45 to 54** years. The age group least represented in this geography is **0 to 4** years.

### Age Groups\*

	1990		2000		2011A		2016		Percent Change	
	Census	%	Census	%	Estimate	%	Projection	%	1990 to 2000	2011 to 2016
0 to 4	17,490	7.0%	13,348	5.7%	12,792	5.4%	13,243	5.5%	-23.7%	3.5%
5 to 14	33,654	13.4%	32,699	13.9%	27,965	11.9%	26,934	11.1%	-2.8%	-3.7%
15 to 19	17,727	7.1%	16,744	7.1%	16,323	6.9%	14,784	6.1%	-5.5%	-9.4%
20 to 24	20,320	8.1%	13,729	5.8%	16,943	7.2%	16,670	6.9%	-32.4%	-1.6%
25 to 34	41,165	16.4%	29,497	12.5%	27,434	11.6%	32,260	13.3%	-28.3%	17.6%
35 to 44	34,737	13.8%	36,797	15.6%	30,795	13.1%	27,601	11.4%	5.9%	-10.4%
45 to 54	24,505	9.8%	32,136	13.6%	35,502	15.1%	35,045	14.4%	31.1%	-1.3%
55 to 64	22,493	9.0%	21,766	9.2%	29,342	12.4%	33,245	13.7%	-3.2%	13.3%
65 to 74	22,213	8.9%	18,275	7.8%	18,853	8.0%	22,829	9.4%	-17.7%	21.1%
75 +	16,550	6.6%	20,478	8.7%	19,927	8.4%	20,115	8.3%	23.7%	0.9%

### Population by Race/Ethnicity

### Race and Ethnicity Percent Composition



In 2011A, the predominant race/ethnicity category in this study area is **White**. The race & ethnicity category least represented in this geography is **American Indian, Alaska Native**.

A: White  
 B: Asian Pac Islidr  
 C: Black  
 D: Hispanic  
 E: Amer Indian or Alaska Native  
 F: Other or Multi Race

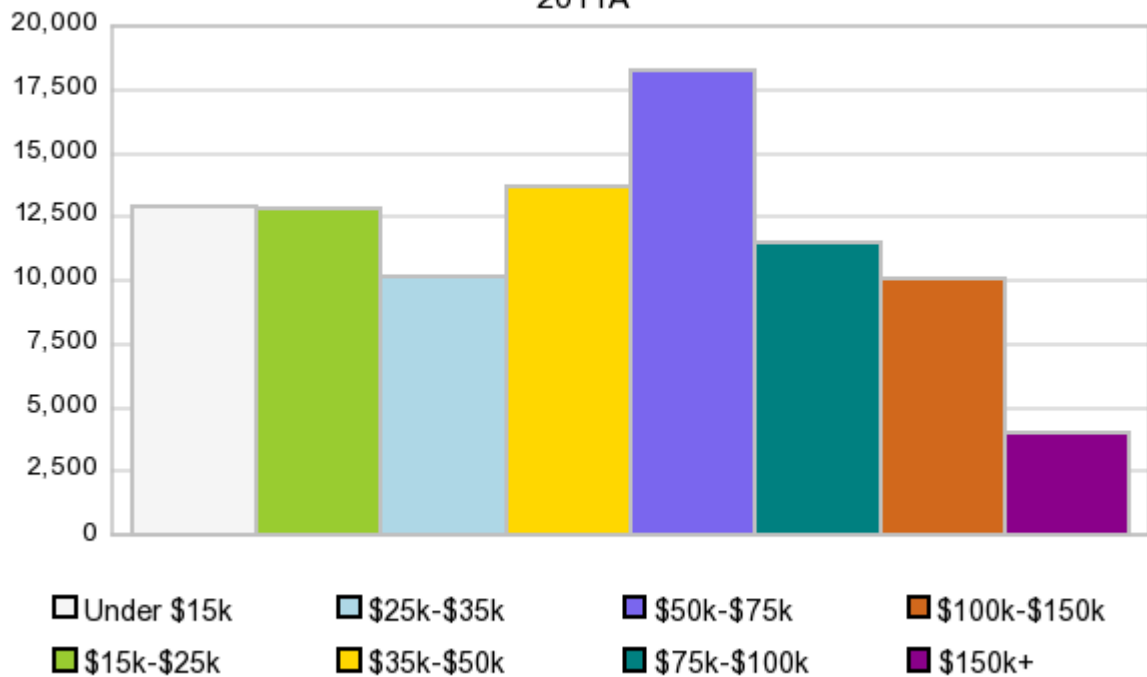
### Race & Ethnicity

	2000		2010		2011A		2016		Percent Change	
	Census	%	Census	%	Estimate	%	Projection	%	2000 to 2010	2011 to 2016
White	212,414	90.2%	204,679	87.1%	205,568	87.2%	210,945	86.9%	-3.6%	2.6%
Black	13,521	5.7%	14,688	6.3%	14,679	6.2%	15,357	6.3%	8.6%	4.6%
American Indian or Alaska Native	549	0.2%	605	0.3%	610	0.3%	634	0.3%	10.2%	3.9%
Asian/Hawaiian/PI	2,777	1.2%	6,634	2.8%	6,703	2.8%	7,089	2.9%	138.9%	5.8%
Some Other Race	2,625	1.1%	3,407	1.5%	3,062	1.3%	3,175	1.3%	29.8%	3.7%
Two or More Races	3,583	1.5%	4,865	2.1%	5,264	2.2%	5,559	2.3%	35.8%	5.6%
Hispanic Ethnicity	7,545	3.2%	10,819	4.6%	11,449	4.9%	14,324	5.9%	43.4%	25.1%
Not Hispanic or Latino	227,924	96.8%	224,059	95.4%	224,430	95.1%	228,435	94.1%	-1.7%	1.8%

### Households by Income

### Households by Income Group 2011A

In 2011A the predominant household income category in this study area is **\$50K - \$75K**, and the income group that is least represented in this geography is **\$150K +**.



#### HH Income Categories\*

	1990 Census		2000 Census		2011A Estimate		2016 Projection		Percent Change	
		%		%		%		%	1990 to 2000	2011 to 2016
\$0 - \$15,000	24,795	26.8%	17,118	18.9%	12,886	13.8%	11,551	12.3%	-31.0%	-10.4%
\$15,000 - \$24,999	18,442	19.9%	13,978	15.4%	12,803	13.7%	12,379	13.2%	-24.2%	-3.3%
\$25,000 - \$34,999	16,046	17.3%	13,031	14.4%	10,134	10.9%	9,140	9.7%	-18.8%	-9.8%
\$35,000 - \$49,999	16,574	17.9%	15,600	17.2%	13,667	14.7%	12,772	13.6%	-5.9%	-6.5%
\$50,000 - \$74,999	11,658	12.6%	17,276	19.1%	18,225	19.5%	18,281	19.5%	48.2%	0.3%
\$75,000 - \$99,999	3,116	3.4%	7,292	8.1%	11,454	12.3%	13,040	13.9%	134.0%	13.8%
\$100,000 - \$149,999	1,224	1.3%	4,290	4.7%	10,100	10.8%	12,152	12.9%	250.5%	20.3%
\$150,000 +	721	0.8%	1,911	2.1%	3,963	4.3%	4,633	4.9%	165.0%	16.9%
Average Hhld Income	\$32,469		\$46,363		\$60,803		\$66,834		42.8%	9.9%
Median Hhld Income	\$26,727		\$35,963		\$46,989		\$51,191		34.6%	8.9%
Per Capita Income	\$12,227		\$17,819		\$26,039		\$28,137		45.7%	8.1%

\*This Census 2010 data has not yet been released

Current year data is for the year **2011**, 5 year projected data is for the year **2016**. More About Our Data.  
Demographic data © 2011 by Experian/Applied Geographic Solutions.

Business List data © 2011 by D&B®. All rights reserved. All D&B information is powered by DUNSRight™, D&B's Quality Process.

Alteryx, DemographicsNow.com and the Alteryx and DemographicsNow.com logos are trademarks of Alteryx, Inc.  
All rights reserved.

Privacy Statement | License Agreement