



Date: 04/16/12

Current Geography Selection: (1 Selected) Counties: Oswego County

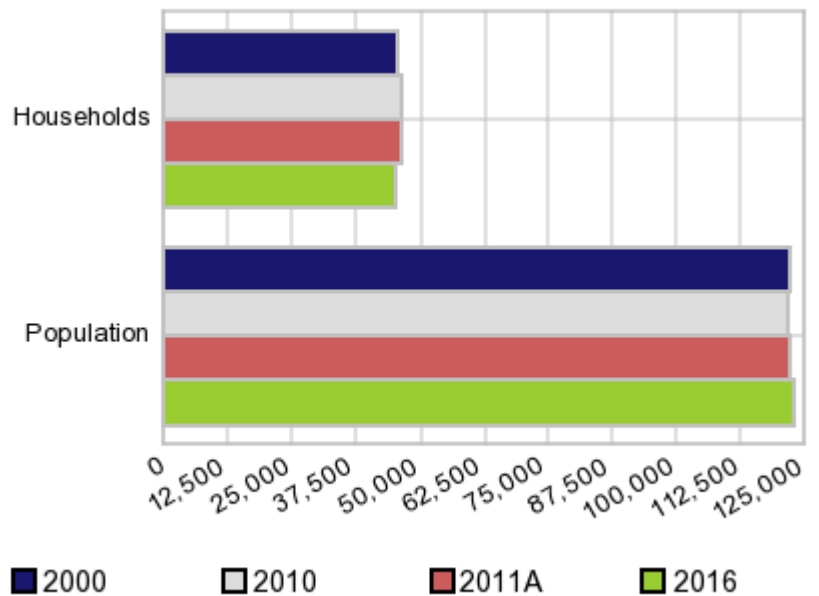
Executive Summary Report with Charts

Population Demographics:

The number of households in the study area in 2000 was **45,522** and changed to **46,400** in 2010, representing a change of **1.9%**. The household count in 2011A was **46,185** and the household projection for 2016 is **45,324**, a change of **-1.9%**.

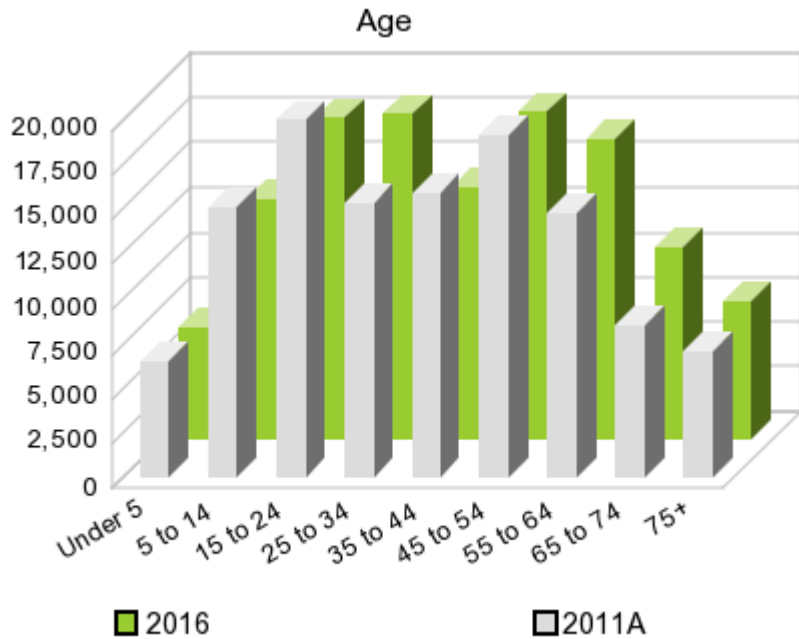
The population in the study area in 2000 was **122,377** and in 2010 it was **122,109**, roughly a **-0.2%** change. The population in 2011A was **122,345** and the projection for 2016 is **123,225** representing a change of **0.7%**.

Population and Household Change



	2000 Census	2010 Census	2011A Estimate	2016 Projection	Percent Change	
					2000 to 2010	2011 to 2016
Total Population	122,377	122,109	122,345	123,225	-0.2%	0.7%
Total Households	45,522	46,400	46,185	45,324	9.3%	-1.9%

Population by Age



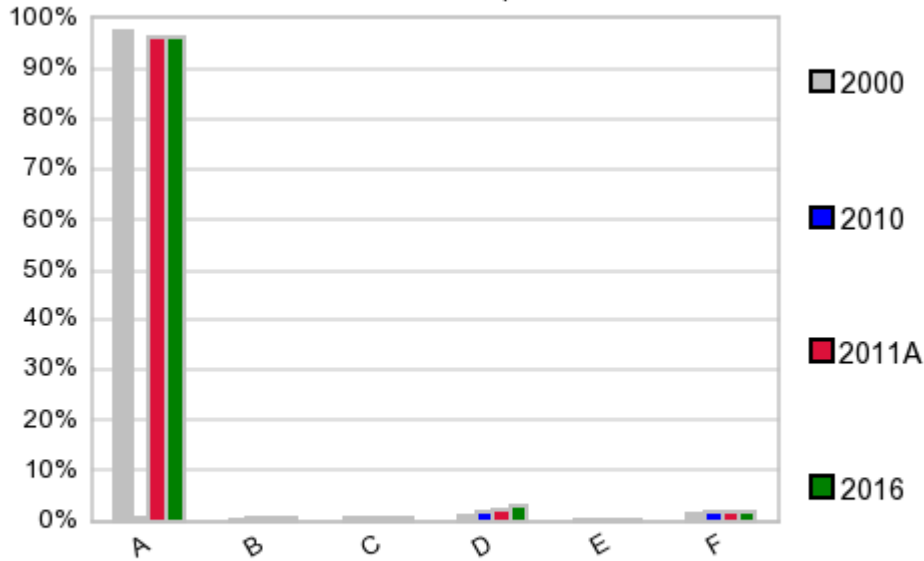
In 1990, the median age of the total population in the study area was **31**, and in 2000, it was **35**. The median age in 2011A is **38** and it is predicted to change in five years to **39** years. In 2011A, females represented **50.5%** of the population with a median age of **39** and males represented **49.5%** of the population with a median age of **37** years. In 2011A, the most prominent age group in this geography is **Age 45 to 54** years. The age group least represented in this geography is **0 to 4** years.

Age Groups*

Age Groups*	1990 Census		2000 Census		2011A Estimate		2016 Projection		Percent Change	
		%		%		%		%	1990 to 2000	2011 to 2016
0 to 4	9,481	7.8%	7,585	6.2%	6,535	5.3%	6,236	5.1%	-20.0%	-4.6%
5 to 14	19,170	15.7%	19,356	15.8%	15,089	12.3%	13,427	10.9%	1.0%	-11.0%
15 to 19	10,256	8.4%	10,062	8.2%	10,019	8.2%	8,071	6.6%	-1.9%	-19.4%
20 to 24	11,065	9.1%	9,105	7.4%	9,949	8.1%	9,913	8.0%	-17.7%	-0.4%
25 to 34	20,175	16.6%	15,068	12.3%	15,317	12.5%	18,143	14.7%	-25.3%	18.5%
35 to 44	17,481	14.4%	20,314	16.6%	15,863	13.0%	14,042	11.4%	16.2%	-11.5%
45 to 54	11,692	9.6%	16,546	13.5%	19,180	15.7%	18,227	14.8%	41.5%	-5.0%
55 to 64	9,334	7.7%	10,466	8.6%	14,780	12.1%	16,808	13.6%	12.1%	13.7%
65 to 74	7,717	6.3%	7,372	6.0%	8,529	7.0%	10,660	8.7%	-4.5%	25.0%
75 +	5,397	4.4%	6,503	5.3%	7,062	5.8%	7,664	6.2%	20.5%	8.5%

Population by Race/Ethnicity

Race and Ethnicity Percent Composition



In 2011A, the predominant race/ethnicity category in this study area is **White**. The race & ethnicity category least represented in this geography is **American Indian, Alaska Native**.

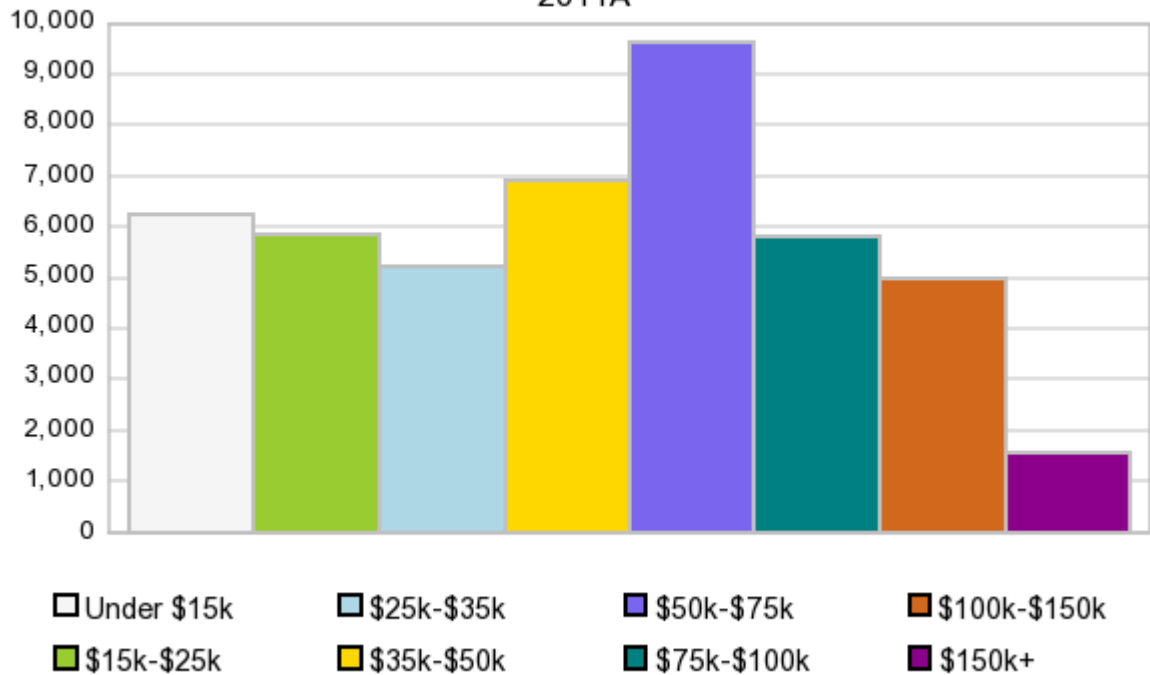
A: White
 B: Asian Pac Islr
 C: Black
 D: Hispanic
 E: Amer Indian or Alaska Native
 F: Other or Multi Race

Race & Ethnicity	2000		2010		2011A		2016		Percent Change	
	Census	%	Census	%	Estimate	%	Projection	%	2000 to 2010	2011 to 2016
White	118,918	97.2%	117,632	96.3%	117,791	96.3%	118,396	96.1%	-1.1%	0.5%
Black	717	0.6%	972	0.8%	998	0.8%	1,108	0.9%	35.6%	11.0%
American Indian or Alaska Native	498	0.4%	520	0.4%	523	0.4%	529	0.4%	4.4%	1.1%
Asian/Hawaiian/PI	525	0.4%	739	0.6%	752	0.6%	815	0.7%	40.8%	8.4%
Some Other Race	582	0.5%	650	0.5%	731	0.6%	761	0.6%	11.7%	4.1%
Two or More Races	1,137	0.9%	1,596	1.3%	1,542	1.3%	1,612	1.3%	40.4%	4.5%
Hispanic Ethnicity	1,592	1.3%	2,552	2.1%	2,829	2.3%	3,932	3.2%	60.3%	39.0%
Not Hispanic or Latino	120,785	98.7%	119,557	97.9%	119,513	97.7%	119,292	96.8%	-1.0%	-0.2%

Households by Income

Households by Income Group 2011A

In 2011A the predominant household income category in this study area is **\$50K - \$75K**, and the income group that is least represented in this geography is **\$150K +**.



HH Income Categories*

HH Income Category	1990 Census		2000 Census		2011A Estimate		2016 Projection		Percent Change	
	Count	%	Count	%	Count	%	Count	%	1990 to 2000	2011 to 2016
\$0 - \$15,000	10,492	24.7%	8,472	18.6%	6,247	13.5%	5,316	11.7%	-19.3%	-14.9%
\$15,000 - \$24,999	7,691	18.1%	6,574	14.4%	5,825	12.6%	5,382	11.9%	-14.5%	-7.6%
\$25,000 - \$34,999	7,359	17.3%	6,674	14.7%	5,220	11.3%	4,517	10.0%	-9.3%	-13.5%
\$35,000 - \$49,999	8,098	19.1%	7,938	17.4%	6,907	15.0%	6,320	13.9%	-2.0%	-8.5%
\$50,000 - \$74,999	6,466	15.2%	9,056	19.9%	9,602	20.8%	9,529	21.0%	40.1%	-0.8%
\$75,000 - \$99,999	1,609	3.8%	4,002	8.8%	5,793	12.5%	6,341	14.0%	148.7%	9.5%
\$100,000 - \$149,999	546	1.3%	2,189	4.8%	4,997	10.8%	6,005	13.3%	300.9%	20.2%
\$150,000 +	166	0.4%	617	1.4%	1,582	3.4%	1,912	4.2%	271.7%	20.9%
Average Hhld Income	\$33,461		\$44,662		\$57,380		\$63,952		33.5%	11.5%
Median Hhld Income	\$29,155		\$36,738		\$47,320		\$53,042		26.0%	12.1%
Per Capita Income	\$11,778		\$16,614		\$22,977		\$25,042		41.1%	9.0%

*This Census 2010 data has not yet been released

Current year data is for the year **2011**, 5 year projected data is for the year **2016**. More About Our Data.
Demographic data ' 2011 by Experian/Applied Geographic Solutions.

Business List data ' 2011 by D&B^{fi}. All rights reserved. All D&B information is powered by DUNSRightTM, D&B's Quality Process.

' 2011. DDR is brought to you by Alteryx, Inc.

Alteryx, DemographicsNow.com and the Alteryx and DemographicsNow.com logos are trademarks of Alteryx, Inc. All rights reserved.

Privacy Statement | License Agreement